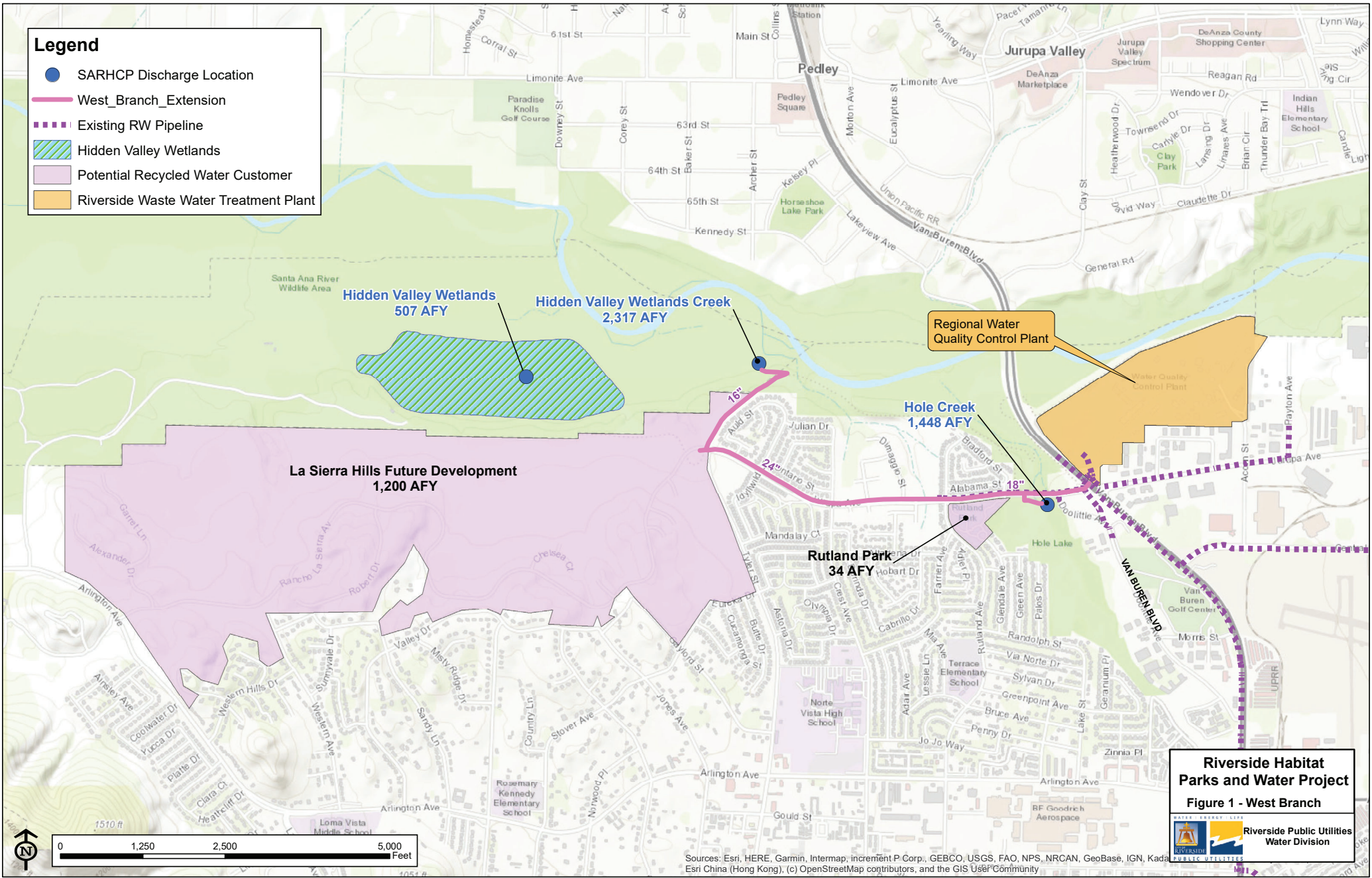


Legend

- SARHCP Discharge Location
- West_Branch_Extension
- Existing RW Pipeline
- Hidden Valley Wetlands
- Potential Recycled Water Customer
- Riverside Waste Water Treatment Plant



Sources: Esri, HERE, Garmin, Intermap, increment P Corp., GEBCO, USGS, FAO, NPS, NRCAN, GeoBase, IGN, Kadat
Esri China (Hong Kong), (c) OpenStreetMap contributors, and the GIS User Community