



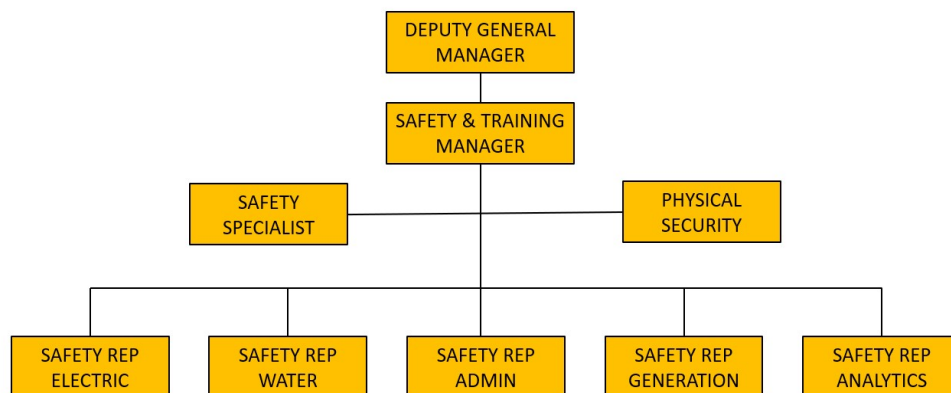
GENERAL MANAGER'S REPORT RPU SAFETY PROGRAM UPDATE

Administration - Safety

Board of Public Utilities
December 12, 2022

RiversideCA.gov

RPU SAFETY TEAM



RiversidePublicUtilities.com



2

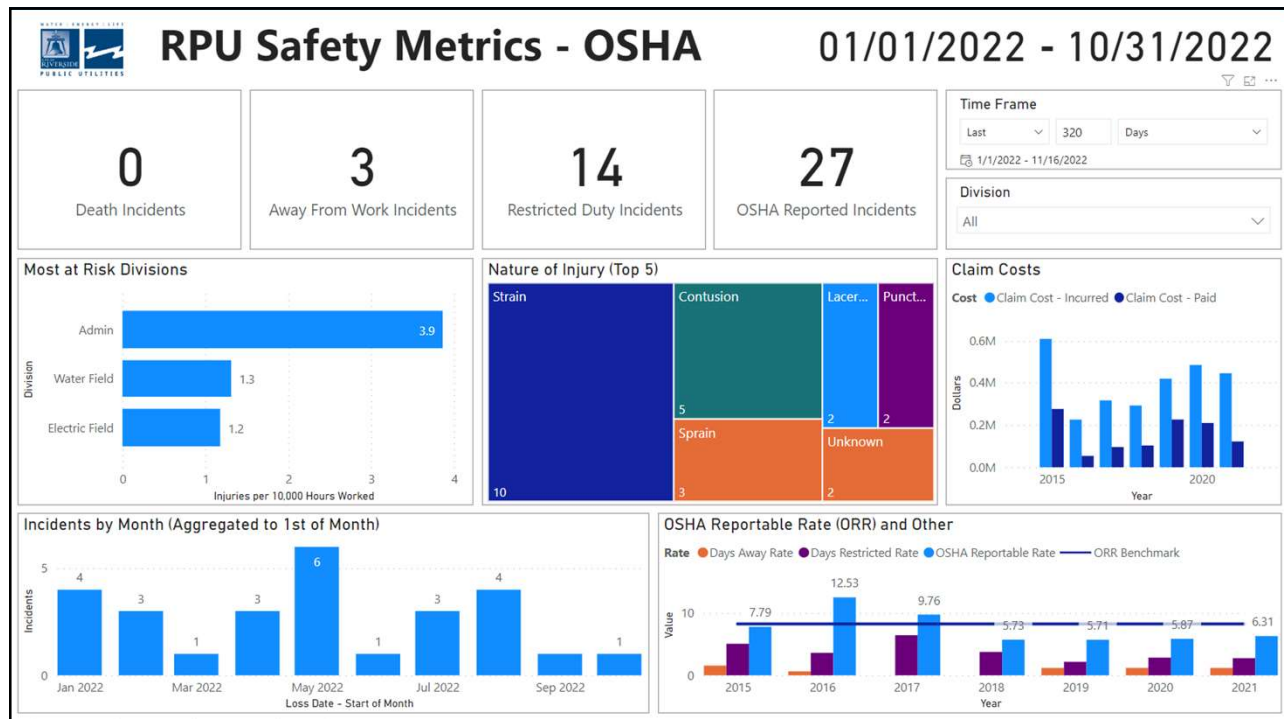
RPU SAFETY OBJECTIVES

1. Establish a safe and healthful work environment for each RPU Team Member.
2. Provide a structured management approach to control safety risk in the operations of the utility.
3. Compliance with the California Code of Regulations Title 8, Section 3203, the Safety Program requirements of SBI 98, and responsibilities under ABI 127 Labor Code Section 6401.7 (a)

RiversidePublicUtilities.com



3



SAFETY TRAINING 3RD QUARTER

1. Blood Borne Pathogens
2. Slips Trips & Falls*
3. Fire Extinguisher
4. Active Shooter
5. Defensive Driving*
6. Gas Monitoring
7. Compressed Gas Cylinder Handling
8. Confined Space Awareness



5

RiversidePublicUtilities.com

PARTICIPATION PERCENTAGE OF TRAINING

1. Blood Borne Pathogens- 8%
2. Slips Trips and Falls- 23%
3. Fire Extinguisher- 4%
4. Active Shooter- 6%
5. Defensive Driving- 4%
6. Gas Monitoring- 10%
7. Compressed Gas Cylinder Handling- 10%
8. Confined Space Awareness- 15%



6

RiversidePublicUtilities.com

SAFETY CHALLENGES

1. Transitioning back to in person meetings
2. Span of control
3. Ergonomic assessments for staff returning to work

RiversidePublicUtilities.com



7

SAFETY OPPORTUNITIES

1. Leveraging technology to increase training
2. Acquire safety leads to assist in Safety Pulse

RiversidePublicUtilities.com



8

STRATEGIC PLAN ALIGNMENT



Strategic Priority 5 - High Performing Government

Goal 5.5 – Foster a culture of safety, well-being, resilience, sustainability, diversity, and inclusion across the City organization

CROSS CUTTING THREADS



Community Trust



Fiscal Responsibility



Sustainability &
Resiliency



Equity



Innovation

RiversidePublicUtilities.com



9

RECOMMENDATION

That the Board of Public Utilities receive and file a safety program update.

RiversidePublicUtilities.com



10