

Riverside Gateway Parks Master Plans

Parks, Recreation and Community Services
Department

Safety, Wellness, and Youth Committee

February 15, 2023

RiversideCA.gov

1

Project Background

Project Goals:

Increasing recreational opportunities, educational use, public access, water quality protection, enhancement of wildlife habitat, serving as a gateway to the river, creating a recreation destination, and economic opportunity.

This project was made possible with funding from the Coastal Conservancy.



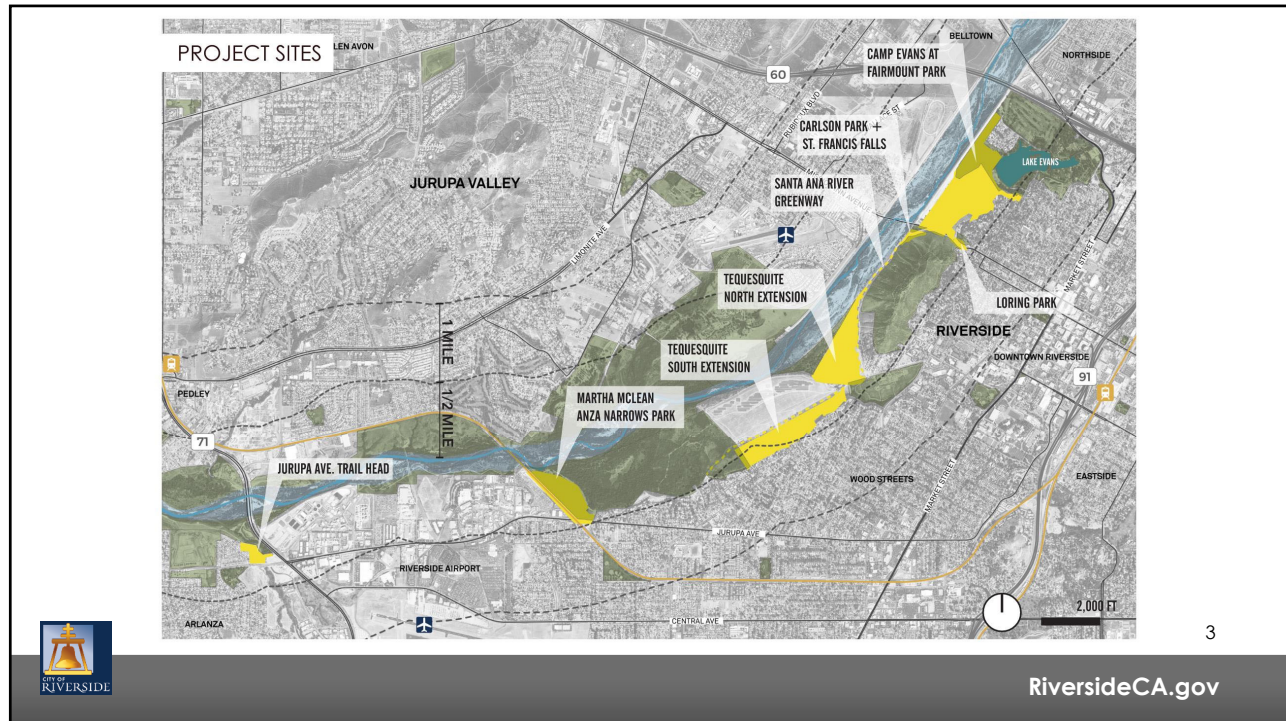
The Coastal Conservancy is a California state agency, established in 1976, to protect and improve natural lands and waterways, to help people get to and enjoy the outdoors, and to sustain local economies along California's coast. It acts with others to protect and restore, and increase public access to, California's coast, ocean, coastal watersheds, and the San Francisco Bay Area. Its vision is of a beautiful, restored, and accessible coast for current and future generations of Californians.



2

RiversideCA.gov

2



3

Project Process

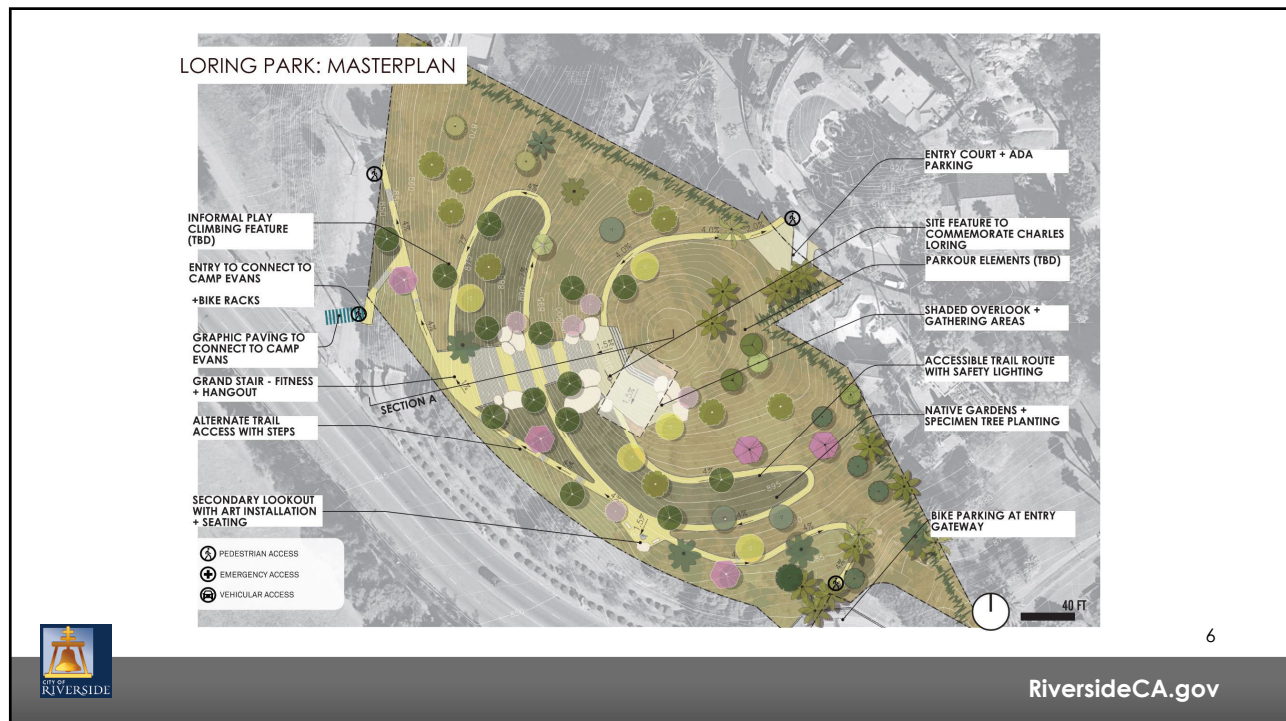
- ✓ Site Inventory and Analysis
- ✓ Identify Opportunities and Constraints
- ✓ Community Outreach
- ✓ Conceptual Master Plans
- ☐ CEQA and Natural Resource Agency Coordination (50% complete)
- ☐ Adoption of Final Master Plans and CEQA certification (January 2024)



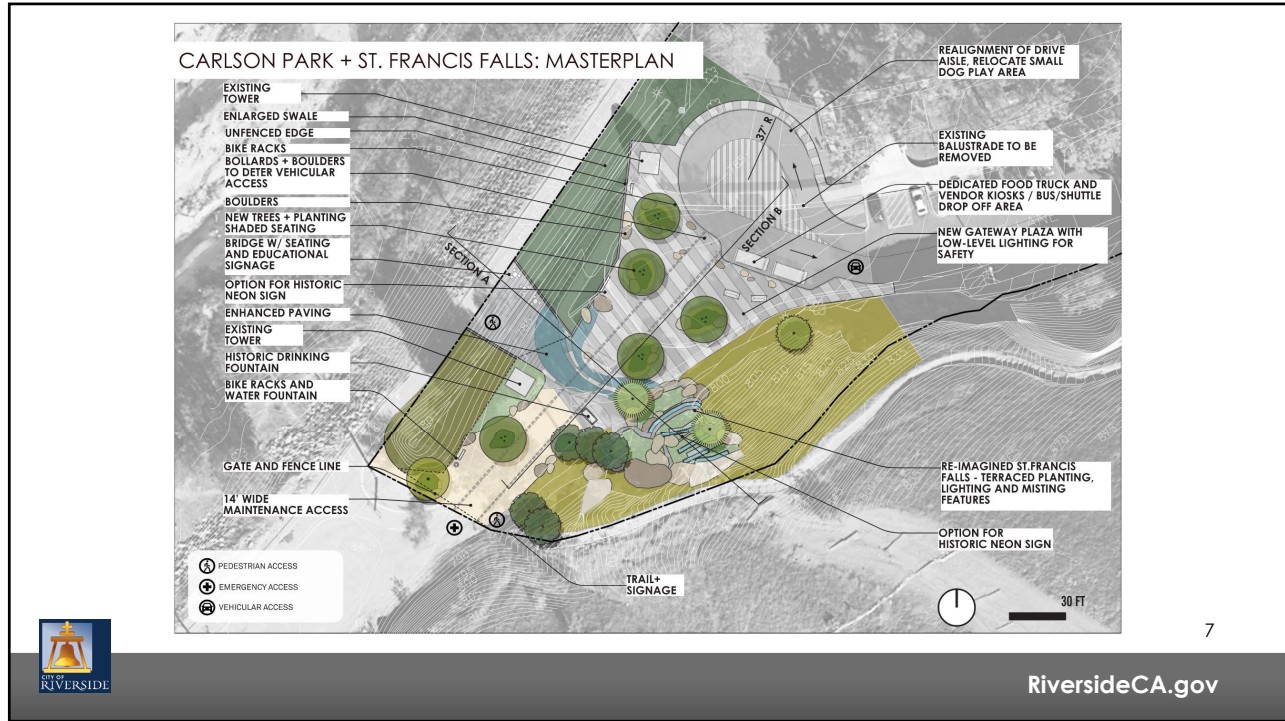
4



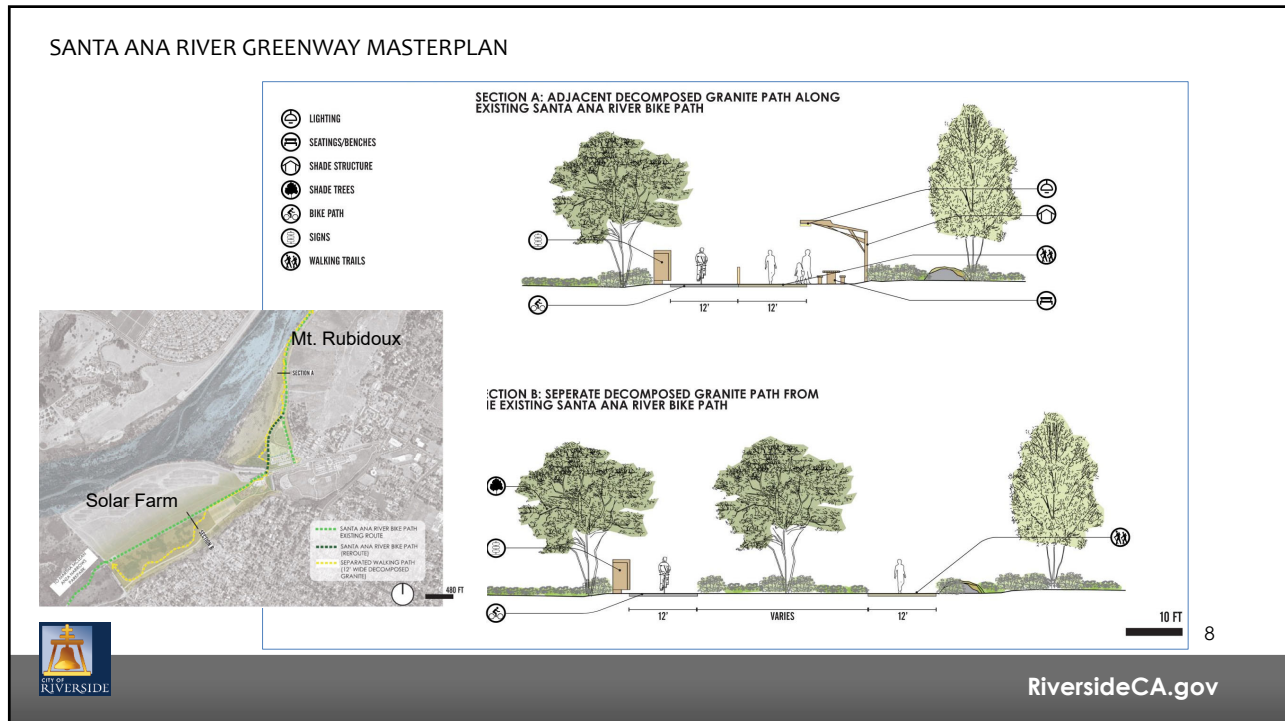
5



6



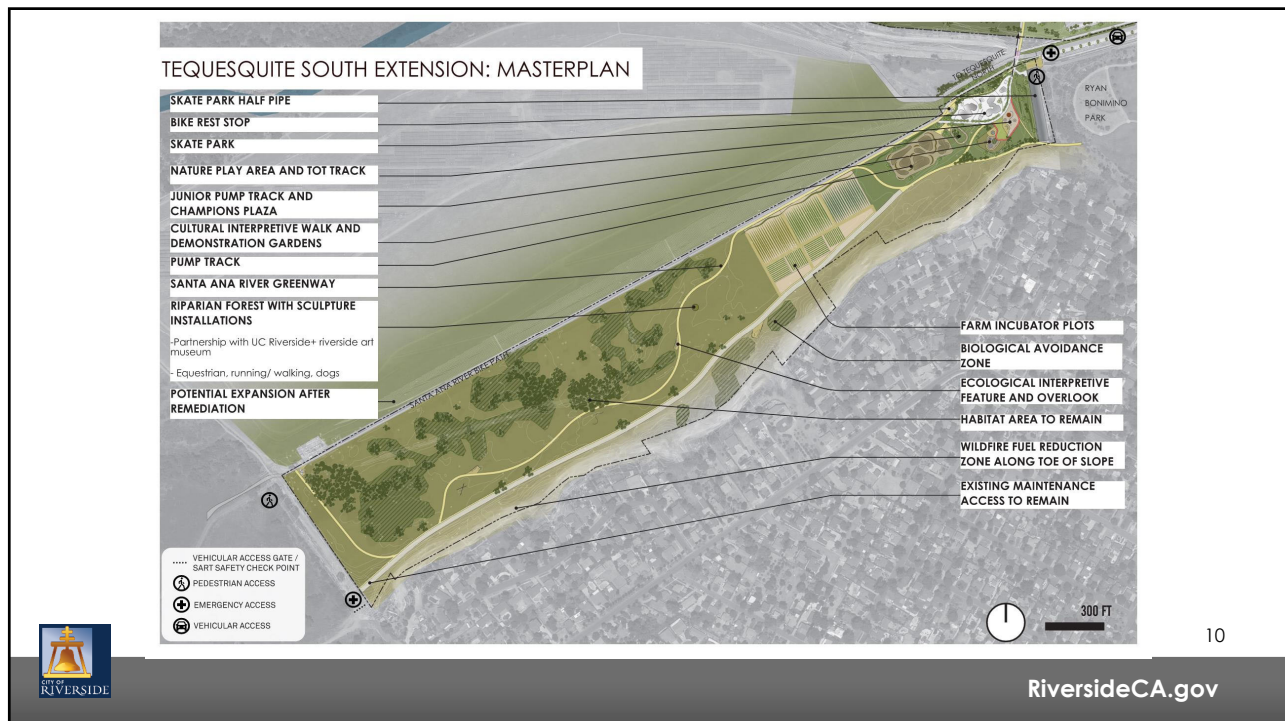
7



8



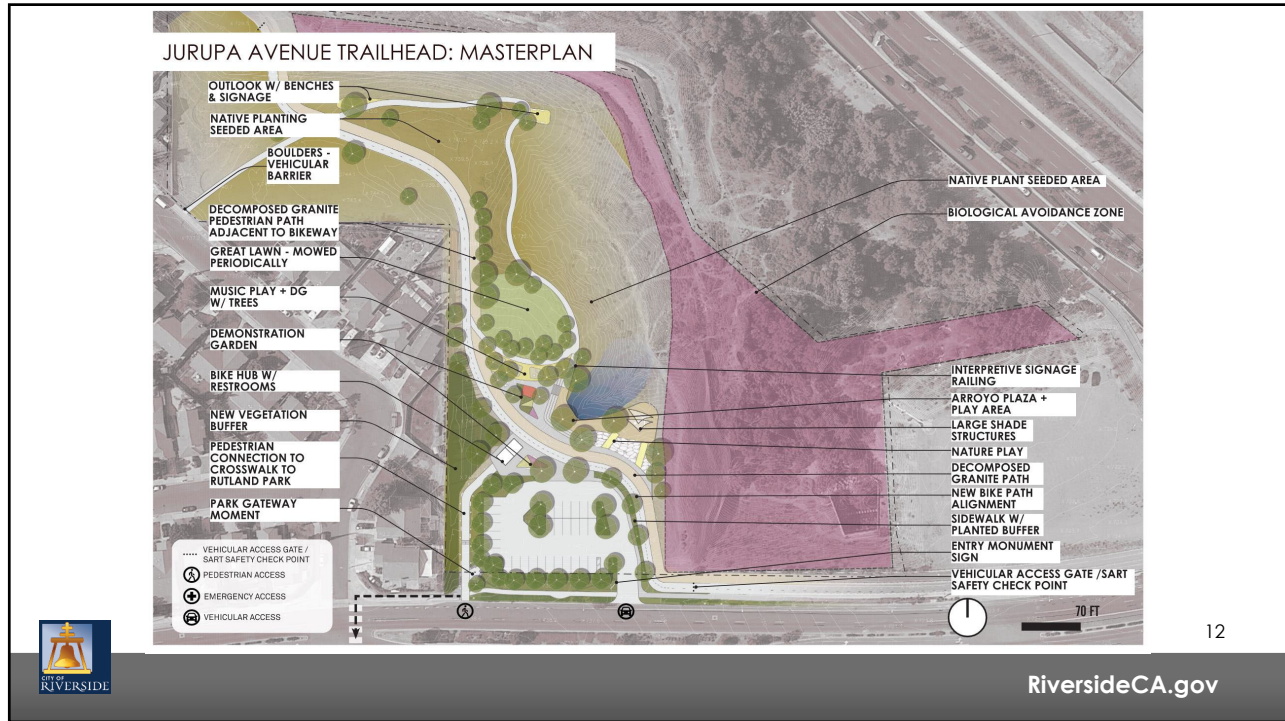
9



10



11



12

Habitat & Open Space

Site	Proposed New Developed Acres	New Planting Area Acres	Acres to Remain As-is	Acres Total site
Camp Evans	21	33	55	110
Loring Park	0.4	2	0	2.4
Tequesquite North	12	8	43	64
Tequesquite South	10	14	35	60
Martha McLean	4	3	33	39
Jurupa Ave Trailhead	2	3	3	8
	50	64	169	282

- 79% of overall acreage left as-is or native/low water planting
- 21% of overall acreage developed for active recreation



13

RiversideCA.gov

13

Rough Construction Cost Estimate and Annual Maintenance Cost Projection

	Bid Documents, Construction, Admin	Annual Maintenance
Camp Evans	\$74,000,000	\$275,000
Loring	\$5,100,000	\$12,000
St. Francis/Carlson	\$2,600,000	\$4,500
Tequesquite North	\$51,300,000	\$211,000
Tequesquite South	\$87,300,000	\$212,000
Greenway	\$9,900,000	\$83,000
Martha McLean	\$20,400,000	\$115,000
Jurupa Trailhead	\$7,900,000	\$32,000
TOTAL	\$258,500,000	\$944,500



14

RiversideCA.gov

14

PROJECT INFORMATION AND CONTACTS

Website: <https://riversidegatewayparks.com/>

Call: (951) 228-0022

Email: info@riversidegatewayparks.com



15

RiversideCA.gov

15

STRATEGIC PLAN ALIGNMENT

Strategic Priority 1 – Arts, Culture and Recreation:

- Goal 1.3: improve parks, recreational amenities, open space, and trail development, and fulfill critical lifecycle and facility maintenance needs
- Goal 1.4: to prioritize safety at parks, trails, arts, cultural and recreational facilities

Strategic Priority 2 – Community Wellbeing:

- Goal 2.3: strengthen neighborhood identities and improve community health and the physical environment through amenities and programs that foster an increased sense of community and enhanced feelings of pride and belonging citywide, and

Strategic Priority 5 – High Performing Government:

- Goal 5.3: enhance communication and collaboration with community members to improve transparency, build public trust, and encourage shared decision-making.

Cross-Cutting Threads



Community Trust



Fiscal Responsibility

Sustainability &
Resiliency

Equity



Innovation



16

RiversideCA.gov

16

RECOMMENDATIONS

That the Safety, Wellness, and Youth Committee provide feedback and receive report for file.



17

RiversideCA.gov