

# TRACT NO. 37732

IN THE CITY OF RIVERSIDE, COUNTY OF RIVERSIDE, STATE OF CALIFORNIA  
BEING A SUBDIVISION OF LOTS 18, 32 AND THE EAST ONE-HALF OF LOT 31 OF  
WOODREST ACRES, IN THE CITY OF RIVERSIDE, COUNTY OF CALIFORNIA, AS PER MAP  
RECORDED IN BOOK 11, PAGE 82 OF MAPS, LOCATED IN SECTION 29, T.3S., R.4W., S.B.M.

KWC ENGINEERS AUGUST 2021

CORONA, CA

## RECORDERS STATEMENT

FILED THIS \_\_\_\_\_ DAY OF \_\_\_\_\_, 20\_\_\_\_  
AT \_\_\_\_\_ M. IN BOOK \_\_\_\_\_ AT THE  
REQUEST OF THE CITY CLERK OF THE CITY OF  
RIVERSIDE.  
NO. \_\_\_\_\_

FEE: \_\_\_\_\_  
PETER ALDANA  
ASSESSOR-COUNTY CLERK-RECORDER  
BY: \_\_\_\_\_, DEPUTY  
SUBDIVISION GUARANTEE:  
FIRST AMERICAN TITLE COMPANY

## OWNERS STATEMENT

WE HEREBY STATE WE ARE THE OWNERS OF OR HAVE SOME RIGHT, TITLE OR INTEREST IN THE LAND INCLUDED WITHIN THE SUBDIVISION AS SHOWN ON THE ANNEXED MAP. WE ARE THE ONLY PERSONS WHOSE CONSENT IS NECESSARY TO PASS CLEAR TITLE TO SAID LAND AND WE CONSENT TO THE PREPARATION AND RECORDATION OF THIS SUBDIVISION MAP AS SHOWN WITHIN THE DISTINCTIVE BORDER LINE.

WE HEREBY DEDICATE TO PUBLIC USE FOR PUBLIC STREET AND PUBLIC UTILITY PURPOSES, LOTS "A" THROUGH "C", INCLUSIVE.

WE HEREBY DEDICATE TO PUBLIC USE FOR PUBLIC UTILITY PURPOSES AND OTHER PUBLIC SERVICES, LOTS "D" THROUGH "I", INCLUSIVE.

WE HEREBY DEDICATE TO THE CITY OF RIVERSIDE AS AN EASEMENT FOR THE CONSTRUCTION AND MAINTENANCE OF STORM DRAIN FACILITIES, THE EASEMENTS DESIGNATED AS "PUBLIC STORM DRAIN EASEMENT".

WE HEREBY DEDICATE TO THE CITY OF RIVERSIDE AS EASEMENTS FOR EMERGENCY ACCESS, TOGETHER WITH THE RIGHT OF INGRESS AND EGRESS TO PERFORM SERVICES RELATED TO TRASH REMOVAL, PUBLIC UTILITIES, INCLUDING BUT NOT LIMITED TO ELECTRICAL, WATER, CABLE TELEVISION AND COMMUNICATION SYSTEMS, THE EASEMENTS DESIGNATED AS "SANITATION SERVICE EASEMENT".

WE HEREBY DEDICATE TO THE CITY OF RIVERSIDE AS AN EASEMENT FOR CONSTRUCTION AND MAINTENANCE OF ELECTRIC ENERGY DISTRIBUTION AND TELECOMMUNICATION FACILITIES, THE EASEMENTS DESIGNATED AS 8 FOOT PUBLIC UTILITY EASEMENT (P.U.E.).

WE HEREBY RESERVE TO OURSELVES, OUR SUCCESSORS, ASSIGNS AND LOT OWNERS, LOTS "D" THROUGH "I", INCLUSIVE, INDICATED AS "PRIVATE STREET". SAID PRIVATE STREET IS FOR THE SOLE BENEFIT OF OURSELVES, OUR SUCCESSORS, ASSIGNS, LOT OWNERS, AND INVITEES, WITHIN THIS TRACT.

WE HEREBY RESERVE TO OURSELVES, OUR SUCCESSORS, ASSIGNS AND LOT OWNERS, LOTS "J" THROUGH "L", INCLUSIVE INDICATED AS "COMMON AREA", SAID COMMON AREA IS FOR THE SOLE BENEFIT OF OURSELVES, OUR SUCCESSORS, ASSIGNS, LOT OWNERS AND INVITEES, WITHIN THIS TRACT MAP.

WE HEREBY RESERVE TO OURSELVES, OUR SUCCESSORS, ASSIGNS AND LOT OWNERS, THE EASEMENTS DESIGNATED AS "PRIVATE STORM DRAIN EASEMENT" AS SHOWN HEREON, SAID PRIVATE STORM DRAIN EASEMENT IS FOR THE SOLE BENEFIT OF OURSELVES, OUR SUCCESSORS, ASSIGNS, AND LOT OWNERS, WITHIN THIS TRACT MAP.

KB HOME COASTAL, INC., A CALIFORNIA CORPORATION

BY: \_\_\_\_\_  
VICE PRESIDENT, FORWARD PLANNING  
SCOTT HANSEN

## NOTARY ACKNOWLEDGEMENT

A NOTARY PUBLIC OR OTHER OFFICER COMPLETING THIS CERTIFICATE VERIFIES ONLY THE IDENTITY OF THE INDIVIDUAL WHO SIGNED THE DOCUMENT TO WHICH THIS CERTIFICATE IS ATTACHED, AND NOT THE TRUTHFULNESS, ACCURACY, OR VALIDITY OF THAT DOCUMENT.

STATE OF \_\_\_\_\_  
COUNTY OF \_\_\_\_\_  
ON \_\_\_\_\_, BEFORE ME, \_\_\_\_\_, A NOTARY PUBLIC,

PERSONALLY APPEARED \_\_\_\_\_ WHO PROVED TO ME ON THE BASIS OF SATISFACTORY EVIDENCE TO BE THE PERSON(S) WHOSE NAME(S) IS/ARE SUBSCRIBED TO THE WITHIN INSTRUMENT AND ACKNOWLEDGED TO ME THAT HE/SHE/THEY EXECUTED THE SAME IN HIS/HER/THEIR AUTHORIZED CAPACITY(IES), AND THAT BY HIS/HER/THEIR SIGNATURE(S) ON THE INSTRUMENT THE PERSON(S), OR THE ENTITY UPON BEHALF OF WHICH THE PERSON(S) ACTED, EXECUTED THE INSTRUMENT.

I CERTIFY UNDER PENALTY OF PERJURY UNDER THE LAWS OF THE STATE OF CALIFORNIA THAT THE FOREGOING PARAGRAPH IS TRUE AND CORRECT.

MY PRINCIPAL PLACE OF BUSINESS IS IN \_\_\_\_\_ COUNTY,  
WITNESS MY HAND, \_\_\_\_\_  
MY COMMISSION EXPIRES: \_\_\_\_\_  
PRINT NAME: \_\_\_\_\_ MY COMMISSION NUMBER: \_\_\_\_\_

## WATER FACILITIES STATEMENT

I HEREBY STATE THAT THE SUBDIVIDER NAMED ON THIS MAP HAS POSTED SECURITIES ACCEPTABLE TO WESTERN MUNICIPAL WATER DISTRICT OF RIVERSIDE COUNTY (DISTRICT), ADEQUATE TO FUND CONSTRUCTION OF REQUIRED WATER FACILITIES, ONCE FIRE HYDRANTS, WATER PIPELINES AND APPURTENANCES, ANY REQUIRED OFFSITE FACILITIES AND SERVICE LATERALS HAVE BEEN INSTALLED AND ACCEPTED BY THE DISTRICT AND REQUIRED FEES PAID. THE DISTRICT WILL SUPPLY WATER TO EACH LOT CREATED BY THIS SUBDIVISION, THE EASEMENTS AND RIGHT-OF-WAYS SHOWN ARE SUFFICIENT FOR ALL REQUIREMENTS OF WATER DISTRIBUTION.

DEREK KAWAI, RCE C64263  
DIRECTOR OF ENGINEERING  
DATED \_\_\_\_\_

## SEWER FACILITIES STATEMENT

I HEREBY STATE THAT THE SUBDIVIDER NAMED ON THIS MAP HAS POSTED SECURITIES ACCEPTABLE TO WESTERN MUNICIPAL WATER DISTRICT OF RIVERSIDE COUNTY (DISTRICT), ADEQUATE TO FUND CONSTRUCTION OF REQUIRED SEWER FACILITIES, ONCE SEWER PIPELINES AND APPURTENANCES, ANY REQUIRED OFFSITE FACILITIES, AND SERVICE LATERALS HAVE BEEN INSTALLED AND ACCEPTED BY THE DISTRICT AND REQUIRED FEES PAID. THE DISTRICT WILL SUPPLY SEWER TO EACH LOT CREATED BY THIS SUBDIVISION, THE EASEMENTS AND RIGHT-OF-WAYS SHOWN ARE SUFFICIENT FOR ALL REQUIREMENTS OF SEWER DISTRIBUTION.

DEREK KAWAI, RCE C64263  
DIRECTOR OF ENGINEERING  
DATED \_\_\_\_\_

## PUBLIC UTILITIES CERTIFICATE

I HEREBY CERTIFY, THE SUBDIVIDER NAMED ON THIS MAP HAS DEPOSITED WITH THE CITY OF RIVERSIDE PUBLIC UTILITIES DEPARTMENT SUFFICIENT FUNDS OR MADE THE REQUIRED ARRANGEMENTS AND PROVISIONS FOR THE INSTALLATION OF ELECTRIC FACILITIES NECESSARY TO PROVIDE SERVICE TO ALL LOTS AS SHOWN ON THIS MAP. AND ALL PUBLIC UTILITY EASEMENTS SHOWN ARE SUFFICIENT FOR ALL REQUIREMENTS OF THE ELECTRIC DIVISION OF THE PUBLIC UTILITIES DEPARTMENT OF THE CITY OF RIVERSIDE. ARRANGEMENTS FOR WATER SERVICE MUST BE MADE WITH THE WESTERN MUNICIPAL WATER DISTRICT.

TODD M. CORBIN  
PUBLIC UTILITIES GENERAL MANAGER  
DATED \_\_\_\_\_

## SOILS REPORT

A PRELIMINARY SOILS REPORT WAS PREPARED FOR THIS SUBDIVISION BY GEOCON WEST, INC. ON MAY 28, 2019 AS REQUIRED BY THE HEALTH AND SAFETY CODE OF THE STATE OF CALIFORNIA, SECTION 17959.

## SIGNATURE OMISSIONS

PURSUANT TO SECTION 6646 OF THE SUBDIVISION MAP ACT OF THE STATE OF CALIFORNIA, THE SIGNATURES OF THE FOLLOWING EASEMENT HOLDERS HAVE BEEN OMITTED SINCE THEIR INTERESTS CANNOT RIPEN INTO A FEE:  
EASEMENT FOR WATER PIPELINES PURPOSES, IN FAVOR OF DONALD C. MAMILLAN AND MARIE W. MAMILLAN, RECORDED JULY 31, 1989 AS INSTRUMENT NO. 79060, OF OFFICIAL RECORDS, RIVERSIDE COUNTY.



THOMAS M. CASELDINE  
LICENSED LAND SURVEYOR U.S. 9029  
DATED \_\_\_\_\_

## CITY ENGINEERS STATEMENT

I HEREBY STATE, I HAVE EXAMINED THIS MAP AND THE SUBDIVISION AS SHOWN HEREON IS SUBSTANTIALLY THE SAME AS IT APPEARS ON THE TENTATIVE MAP OF TRACT NO. 37732 APPROVED BY THE CITY OF RIVERSIDE PLANNING COMMISSION ON JUNE 10, 2021 AND ANY APPROVED ALTERATIONS THEREOF. ALL PROVISIONS OF THE SUBDIVISION MAP ACT (DIVISION 2 OF TITLE 7 OF THE CALIFORNIA GOVERNMENT CODE) AND TITLE 18 OF THE RIVERSIDE MUNICIPAL CODE APPLICABLE AT THE TIME OF THE APPROVAL OF THE TENTATIVE MAP HAVE BEEN COMPLIED WITH. THE EASEMENTS FOR SEWER AND DRAINAGE FACILITIES AS SHOWN ON THIS MAP HAVE BEEN APPROVED. THE PLANS FOR DRAINS, DRAINAGE WORKS, AND SEWER SUFFICIENT TO MITIGATE FLOOD DAMAGE TO ALL LOTS IN THE SUBDIVISION HAVE BEEN APPROVED. A COMPLETE SET OF PLANS COVERING ALL IMPROVEMENTS HAVE BEEN FILED WITH THE PUBLIC WORKS DEPARTMENT AND THE SAME ARE CHECKED AND APPROVED, AND ALL IMPROVEMENTS HAVE BEEN COMPLETED IN ACCORDANCE WITH THE APPROVED PLANS. OR THE SUBDIVIDER HAS ENTERED INTO AN AGREEMENT WITH THE CITY OF RIVERSIDE COVERING COMPLETION OF ALL IMPROVEMENTS AND SPECIFYING THE TIME FOR COMPLETING THE SAME.



GILBERT M. HERNANDEZ R.C.E. 69170  
CITY ENGINEER  
DATED \_\_\_\_\_

## CITY SURVEYORS STATEMENT

I HEREBY STATE, I HAVE EXAMINED THIS MAP AND I AM SATISFIED THE MAP IS TECHNICALLY CORRECT, AND ALL MONUMENTS HAVE BEEN SET OR A CASH DEPOSIT SUFFICIENT TO COVER THEIR PLACEMENT HAS BEEN DEPOSITED WITH THE CITY OF RIVERSIDE.



CURTIS C. STEPHENS, P.L.S. 7519  
CITY SURVEYOR  
DATED \_\_\_\_\_

## CITY CLERKS CERTIFICATE

RESOLVED, THIS MAP CONSISTING OF 7 SHEETS BE, AND THE SAME IS HEREBY ACCEPTED AS THE FINAL MAP OF TRACT NO. 37732, LOTS "A" THROUGH "C", INCLUSIVE ARE HEREBY ACCEPTED FOR PUBLIC STREET PURPOSES SUBJECT TO THE INSTALLATION OF IMPROVEMENTS TO THE SATISFACTION OF THE PUBLIC WORKS DIRECTOR OF THE CITY OF RIVERSIDE.

LOTS "A" THROUGH "I", INCLUSIVE ARE HEREBY ACCEPTED FOR PUBLIC UTILITY PURPOSES AND OTHER PUBLIC SERVICES. THE EASEMENTS DESIGNATED AS "SANITATION SERVICES EASEMENT" ARE HEREBY ACCEPTED AS EASEMENTS FOR EMERGENCY ACCESS, TOGETHER WITH THE RIGHT OF INGRESS AND EGRESS TO PERFORM SERVICES RELATED TO TRASH REMOVAL, PUBLIC UTILITIES, INCLUDING BUT NOT LIMITED TO ELECTRICAL, WATER, CABLE TELEVISION, AND COMMUNICATIONS SYSTEMS. WE HEREBY DEDICATE TO THE CITY OF RIVERSIDE, THE EASEMENTS DESIGNATED AS "PUBLIC STORM DRAIN EASEMENT" AS SHOWN HEREON.

THE EASEMENTS DESIGNATED AS A ROOT PUBLIC UTILITY EASEMENT (P.U.E.) ARE HEREBY ACCEPTED AS EASEMENTS FOR THE CONSTRUCTION AND MAINTENANCE OF ELECTRIC ENERGY DISTRIBUTION AND TELECOMMUNICATION FACILITIES.

THE CITY CLERK IS HEREBY AUTHORIZED AND DIRECTED TO ATTEST SAID MAP BY SIGNING HER NAME THERETO AS CITY CLERK OF THE CITY OF RIVERSIDE, STATE OF CALIFORNIA.

I HEREBY CERTIFY THAT THE FOREGOING RESOLUTION WAS ACCEPTED BY THE MAYOR AND COUNCIL OF THE CITY OF RIVERSIDE THIS \_\_\_\_\_ DAY OF \_\_\_\_\_, 2022.

DONESIA GAUSE, CITY CLERK  
OF THE CITY OF RIVERSIDE, CALIFORNIA

## CITY TREASURERS CERTIFICATE

I HEREBY CERTIFY, ACCORDING TO THE RECORDS OF THIS OFFICE, AS OF THIS DATE, THE REAL PROPERTY SHOWN ON THIS MAP IS NOT SUBJECT TO ANY SPECIAL ASSESSMENTS, BONDS, AND/OR LIENS WHICH HAVE NOT BEEN PAID IN FULL, EXCEPT FOR THOSE NOTED BELOW

THIS CERTIFICATE DOES NOT INCLUDE ANY SPECIAL ASSESSMENTS. THE BONDS OF WHICH HAVE NOT BECOME A LIEN UPON SAID PROPERTY, OR ANY SPECIAL ASSESSMENTS, BONDS, AND/OR LIENS RELATED TO SPECIAL DISTRICTS LOCATED WITHIN THE CITY OF RIVERSIDE THAT ARE NOT ADMINISTERED BY THE CITY.

EDWARD ENRIQUEZ  
CHIEF FINANCIAL OFFICER / CITY TREASURER  
DATED \_\_\_\_\_

## TAX BOND CERTIFICATE

I HEREBY CERTIFY THAT A BOND IN THE SUM OF \$ \_\_\_\_\_ HAS BEEN EXECUTED AND FILED WITH THE BOARD OF SUPERVISORS OF THE COUNTY OF RIVERSIDE, CALIFORNIA, CONDITIONED UPON PAYMENT OF ALL TAXES, STATE, COUNTY, MUNICIPAL, OR LOCAL, AND ALL SPECIAL ASSESSMENTS COLLECTED AS TAXES, WHICH AT THE TIME OF FILING OF THIS MAP WITH THE COUNTY RECORDER ARE A LIEN AGAINST SAID PROPERTY BUT NOT YET PAYABLE, AND SAID BOND HAS BEEN DULY APPROVED BY SAID BOARD OF SUPERVISORS.

CASH OR SURETY TAX BOND  
MATTHEW JENNINGS  
COUNTY TAX COLLECTOR

BY: \_\_\_\_\_, DEPUTY  
DATED \_\_\_\_\_

## TAX COLLECTORS CERTIFICATE

I HEREBY CERTIFY THAT ACCORDING TO THE RECORDS OF THIS OFFICE, AS OF THIS DATE, THERE ARE NO LIENS AGAINST THE PROPERTY SHOWN ON THE WITHIN MAP FOR UNPAID STATE, COUNTY, MUNICIPAL, OR LOCAL TAXES OR SPECIAL ASSESSMENTS COLLECTED AS TAXES, EXCEPT TAXES OR SPECIAL ASSESSMENTS COLLECTED AS TAXES NOW A LIEN BUT NOT YET PAYABLE, WHICH ARE ESTIMATED TO BE \$ \_\_\_\_\_.

MATTHEW JENNINGS  
COUNTY TAX COLLECTOR

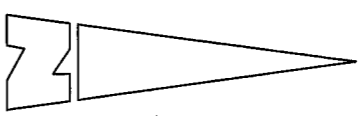
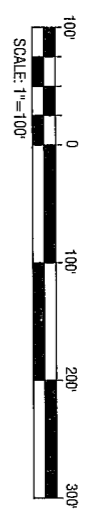
BY: \_\_\_\_\_, DEPUTY  
DATED \_\_\_\_\_



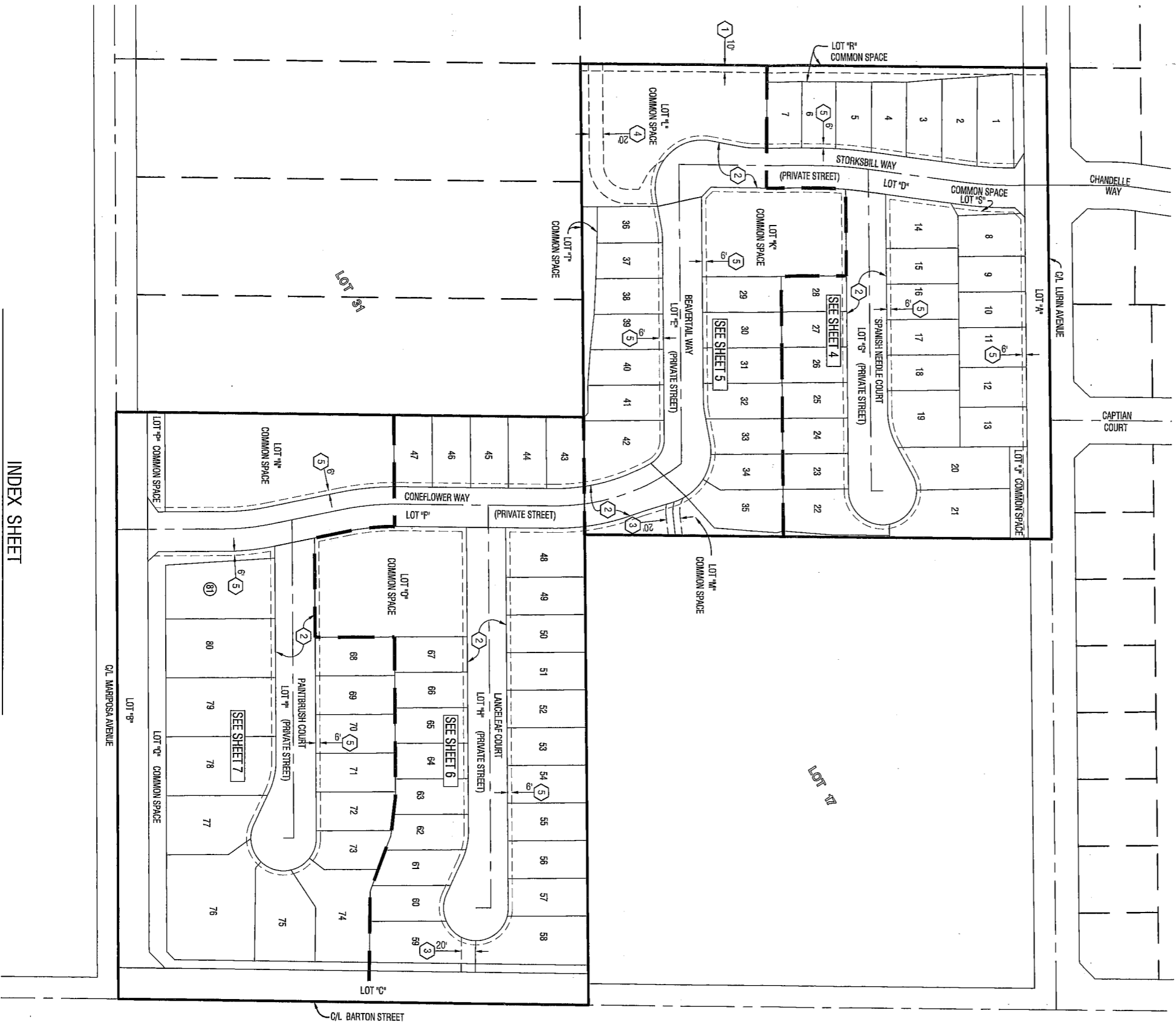
# TRACT NO. 37732

IN THE CITY OF RIVERSIDE, COUNTY OF RIVERSIDE, STATE OF CALIFORNIA  
BEING A SUBDIVISION OF LOTS 18, 32 AND THE EAST ONE-HALF OF THE EAST ONE-HALF OF LOT 31 OF WOODCREST ACRES, IN THE CITY OF RIVERSIDE, COUNTY OF RIVERSIDE, STATE OF CALIFORNIA, AS PER MAP RECORDED IN BOOK 11, PAGE 82 OF MAPS, LOCATED IN SECTION 29, T.3S., R.4W., S.B.M.

KWC ENGINEERS AUGUST 2021  
CORONA, CA



- EASEMENT NOTES:
- 1 INDICATES EASEMENT FOR WATER PIPELINES PURPOSES, IN FAVOR OF DONALD C. McWILLIAM AND MARE W. McWILLIAM, RECORDED JULY 31, 1989 AS INSTRUMENT NO. 78090, OF OFFICIAL RECORDS.
  - 2 INDICATES SANITATION SERVICES EASEMENT.
  - 3 INDICATES A "PRIVATE STORM DRAIN EASEMENT" AS RESERVED HEREON.
  - 4 INDICATES A "PUBLIC STORM DRAIN EASEMENT" AS RESERVED HEREON.
  - 5 INDICATES A 6 FOOT PUBLIC UTILITY EASEMENT (P.U.E.) AS RESERVED HEREON.
  - 6 INDICATES SANITATION SERVICES EASEMENT.

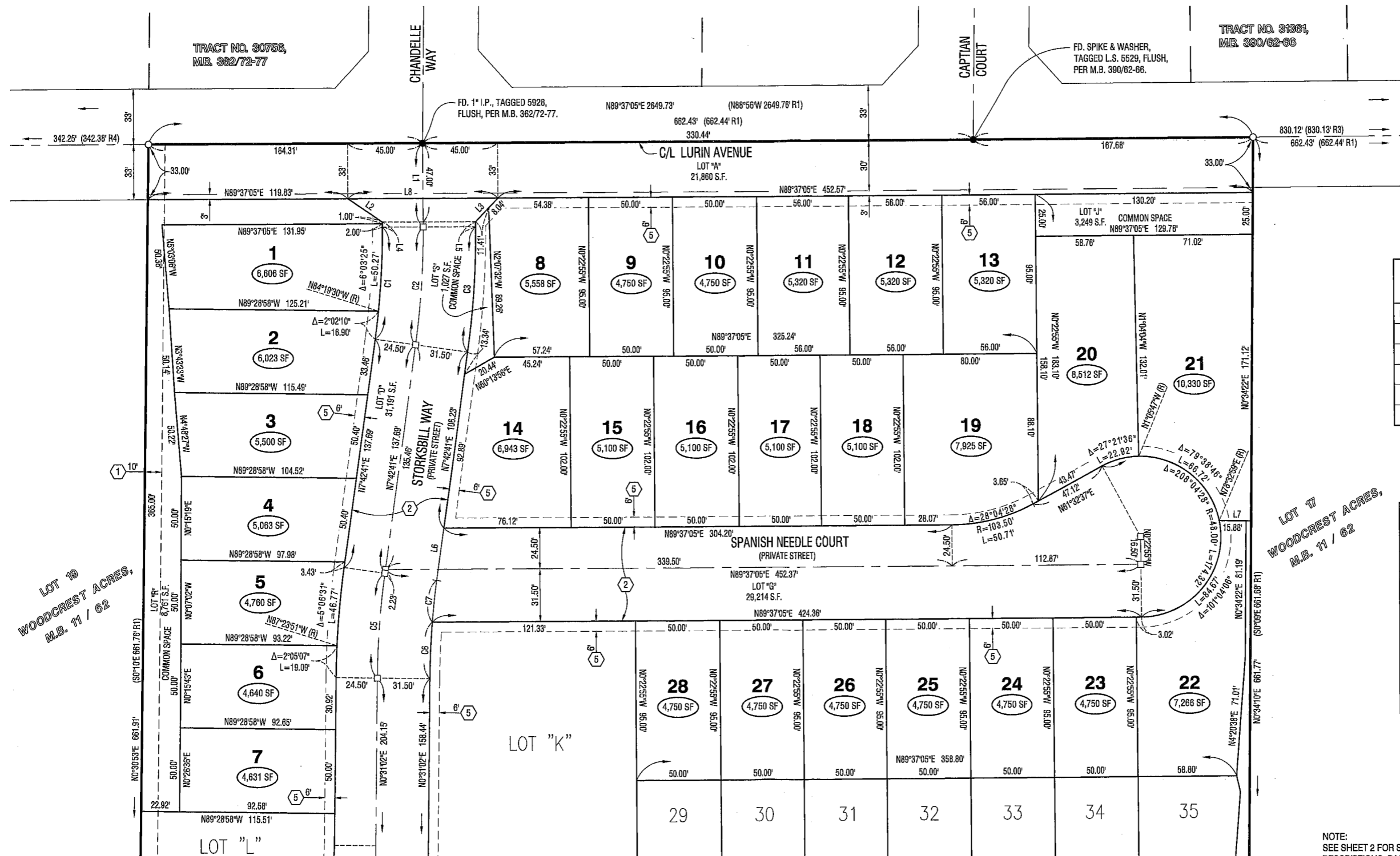
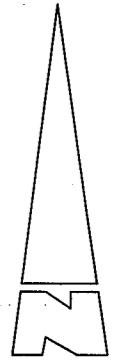
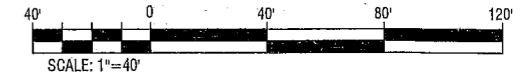


INDEX SHEET

# TRACT NO. 37732

BEING A SUBDIVISION OF LOTS 18, 32 AND THE EAST ONE-HALF OF THE EAST ONE-HALF OF LOT 31 OF WOODCREST ACRES, IN THE CITY OF RIVERSIDE, COUNTY OF RIVERSIDE, STATE OF CALIFORNIA, AS PER MAP RECORDED IN BOOK 11, PAGE 62 OF MAPS. LOCATED IN SECTION 29, T.3S., R.4W., S.B.M.

KWC ENGINEERS AUGUST 2021  
CORONA, CA



CURVE DATA			
NO.	DELTA	RADIUS	LENGTH
C1	8°05'35"	475.50'	67.17'
C3	8°05'35"	531.50'	75.08'
C5	7°11'38"	500.00'	62.78'
C6	4°08'02"	468.50'	33.80'
C7	3°03'37"	468.50'	25.02'

LINE DATA		
NO.	BEARING	DISTANCE
L1	N 0°22'55" W	50.00'
L2	N 56°03'06" W	24.82'
L3	N 43°34'35" E	19.45'
L4	N 0°22'55" W	3.00'
L5	N 0°22'55" W	3.00'
L6	N 7°42'41" E	31.46'
L7	N 89°25'38" W	18.88'
L8	N 89°37'05" E	90.00'

LOT 17  
WOODCREST ACRES,  
M.B. 11 / 62

LOT 19  
WOODCREST ACRES,  
M.B. 11 / 62

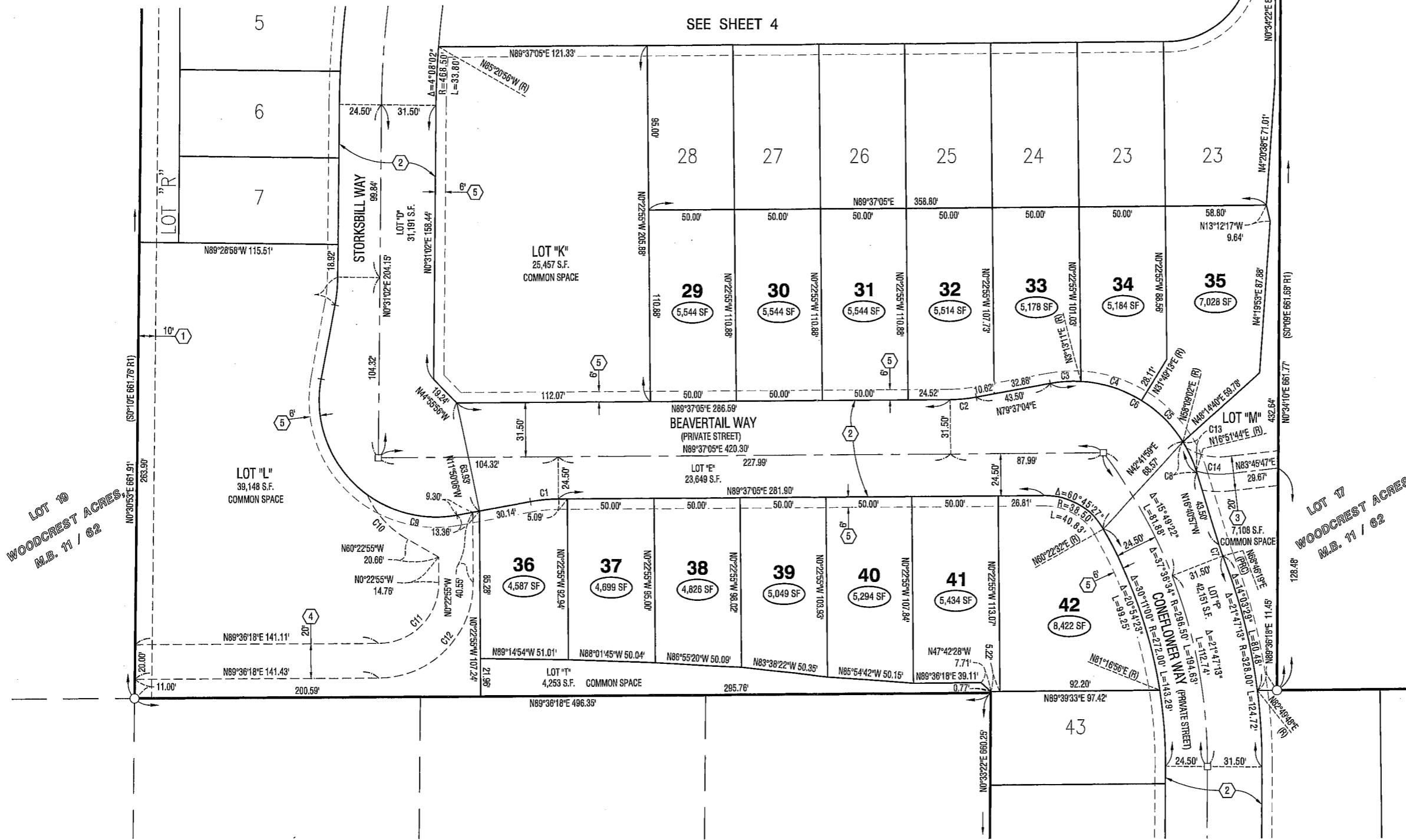
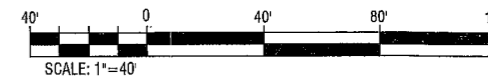
NOTE:  
SEE SHEET 2 FOR SURVEYOR'S NOTES, MONUMENT DESCRIPTIONS, BASIS OF BEARINGS, EASEMENT NOTES, SEE SHEET 2 FOR BOUNDARY CONTROL MAP, SEE SHEET 3 FOR INDEX MAP.

SEE SHEET 5

# TRACT NO. 37732

BEING A SUBDIVISION OF LOTS 18, 32 AND THE EAST ONE-HALF OF THE EAST ONE-HALF OF LOT 31 OF WOODCREST ACRES, IN THE CITY OF RIVERSIDE, COUNTY OF RIVERSIDE, STATE OF CALIFORNIA, AS PER MAP RECORDED IN BOOK 11, PAGE 62 OF MAPS. LOCATED IN SECTION 29, T.3S., R.4W., S.B.M.

KWC ENGINEERS AUGUST 2021  
CORONA, CA



CURVE DATA			
NO.	DELTA	RADIUS	LENGTH
C1	10°00'01"	93.50'	16.32'
C2	10°00'01"	86.50'	15.10'
C3	13°36'07"	74.50'	17.69'
C4	28°36'02"	74.50'	37.19'
C5	26°19'49"	74.50'	34.24'
C6	83°41'59"	74.50'	108.83'
C7	4°32'44"	86.50'	6.86'
C8	15°10'01"	74.50'	19.72'
C9	46°25'52"	67.50'	54.70'
C10	36°51'19"	55.00'	35.38'
C11	89°59'13"	35.00'	54.97'
C12	89°59'13"	55.00'	86.38'
C13	14°21'12"	74.50'	18.66'
C14	23°05'58"	45.00'	18.14'

LOT 10  
WOODCREST ACRES,  
M.B. 11 / 62

LOT 17  
WOODCREST ACRES,  
M.B. 11 / 62

SEE SHEET 6

NOTE:  
SEE SHEET 2 FOR SURVEYOR'S NOTES, MONUMENT DESCRIPTIONS, BASIS OF BEARINGS, EASEMENT NOTES,  
SEE SHEET 2 FOR BOUNDARY CONTROL MAP,  
SEE SHEET 3 FOR INDEX MAP.

# TRACT NO. 37732

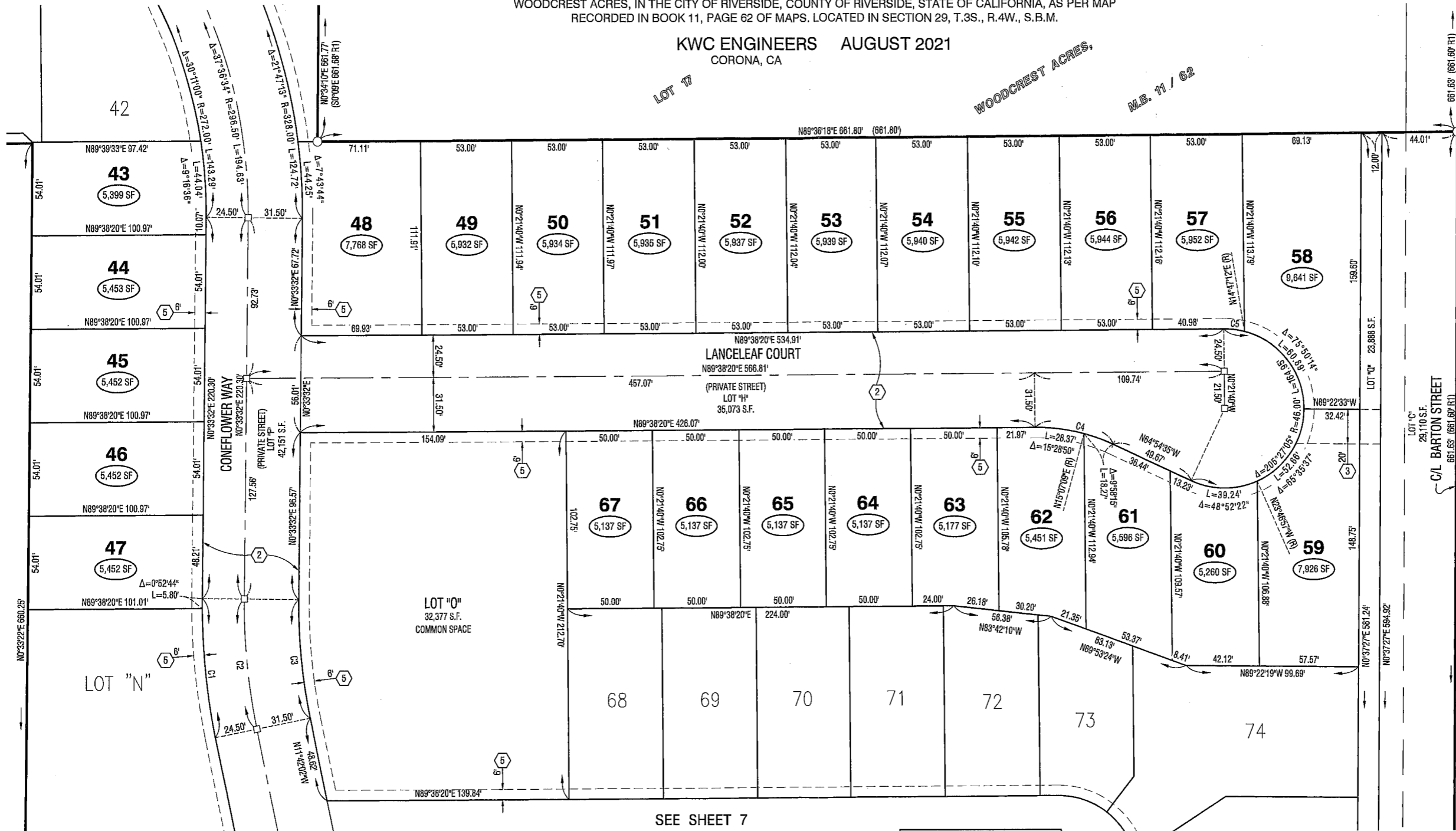
BEING A SUBDIVISION OF LOTS 18, 32 AND THE EAST ONE-HALF OF THE EAST ONE-HALF OF LOT 31 OF WOODCREST ACRES, IN THE CITY OF RIVERSIDE, COUNTY OF RIVERSIDE, STATE OF CALIFORNIA, AS PER MAP RECORDED IN BOOK 11, PAGE 62 OF MAPS. LOCATED IN SECTION 29, T.3S., R.4W., S.B.M.

KWC ENGINEERS AUGUST 2021  
CORONA, CA

WOODCREST ACRES,  
M.B. 11 / 62

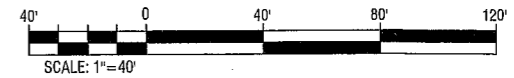
SEE SHEET 5

LOT 17

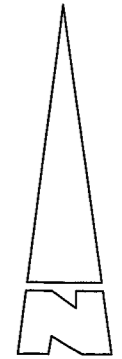


SEE SHEET 7

CURVE DATA			
NO.	DELTA	RADIUS	LENGTH
C1	12°15'33"	378.00'	80.88'
C2	12°15'33"	353.50'	75.64'
C3	12°15'33"	322.00'	68.90'
C4	25°27'05"	105.00'	46.64'
C5	15°08'52"	46.00'	12.16'



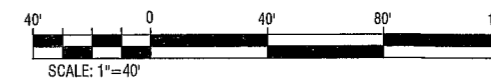
NOTE:  
SEE SHEET 2 FOR SURVEYOR'S NOTES, MONUMENT DESCRIPTIONS, BASIS OF BEARINGS, EASEMENT NOTES, SEE SHEET 2 FOR BOUNDARY CONTROL MAP, SEE SHEET 3 FOR INDEX MAP.



# TRACT NO. 37732

BEING A SUBDIVISION OF LOTS 18, 32 AND THE EAST ONE-HALF OF THE EAST ONE-HALF OF LOT 31 OF WOODCREST ACRES, IN THE CITY OF RIVERSIDE, COUNTY OF RIVERSIDE, STATE OF CALIFORNIA, AS PER MAP RECORDED IN BOOK 11, PAGE 62 OF MAPS. LOCATED IN SECTION 29, T.3S., R.4W., S.B.M.

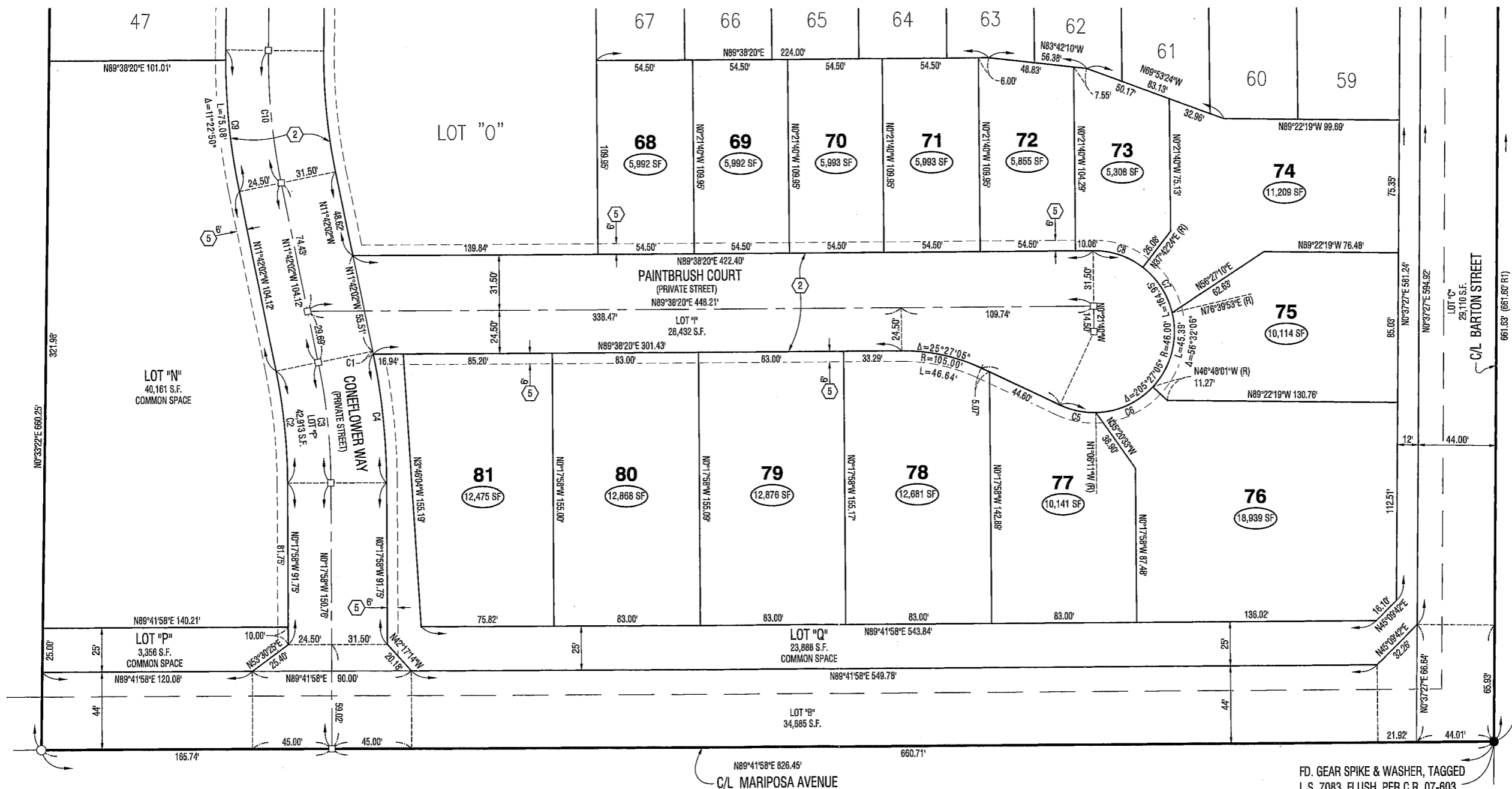
KWC ENGINEERS AUGUST 2021  
CORONA, CA



CURVE DATA			
NO.	DELTA	RADIUS	LENGTH
C1	0°14'38"	378.00'	1.61'
C2	11°24'04"	322.00'	64.07'
C3	11°24'04"	346.50'	68.95'
C4	11°09'26"	378.00'	73.61'
C5	26°11'37"	46.00'	21.03'

CURVE DATA			
C6	45°41'50"	46.00'	36.69'
C8	38°04'04"	46.00'	30.56'
C9	12°15'33"	378.00'	80.88'
C10	12°15'33"	353.50'	75.64'

SEE SHEET 6



FD. GEAR SPIKE & WASHER, TAGGED  
L.S. 7083, FLUSH, PER C.R. 07-603

NOTE:  
SEE SHEET 2 FOR SURVEYOR'S NOTES, MONUMENT DESCRIPTIONS, BASIS OF BEARINGS, EASEMENT NOTES,  
SEE SHEET 2 FOR BOUNDARY CONTROL MAP,  
SEE SHEET 3 FOR INDEX MAP.