

Museum Department

Design of the New Main Museum

**Museum of Riverside Board Meeting
Wednesday, September 27, 2023**

GENERAL GOALS

- Preservation
 - 1912 Post Office Building
 - Central downtown location
- Purpose-Built New Construction
 - Visitors first!
 - Flexible new galleries
 - Enlarged and improved Nature Lab
 - Roof terrace
 - Dedicated classroom
 - Support spaces, loading dock
 - Updated ADA access



FEATURES

- Streetscape
 - Adds and improves green space
 - Addition does not overwhelm historic structure
- Purposeful choices
 - Equitable access
 - Plantings chosen for educational potential
 - Mission Inn Avenue setback remains available for programming
 - Integrity of historic building features maintained



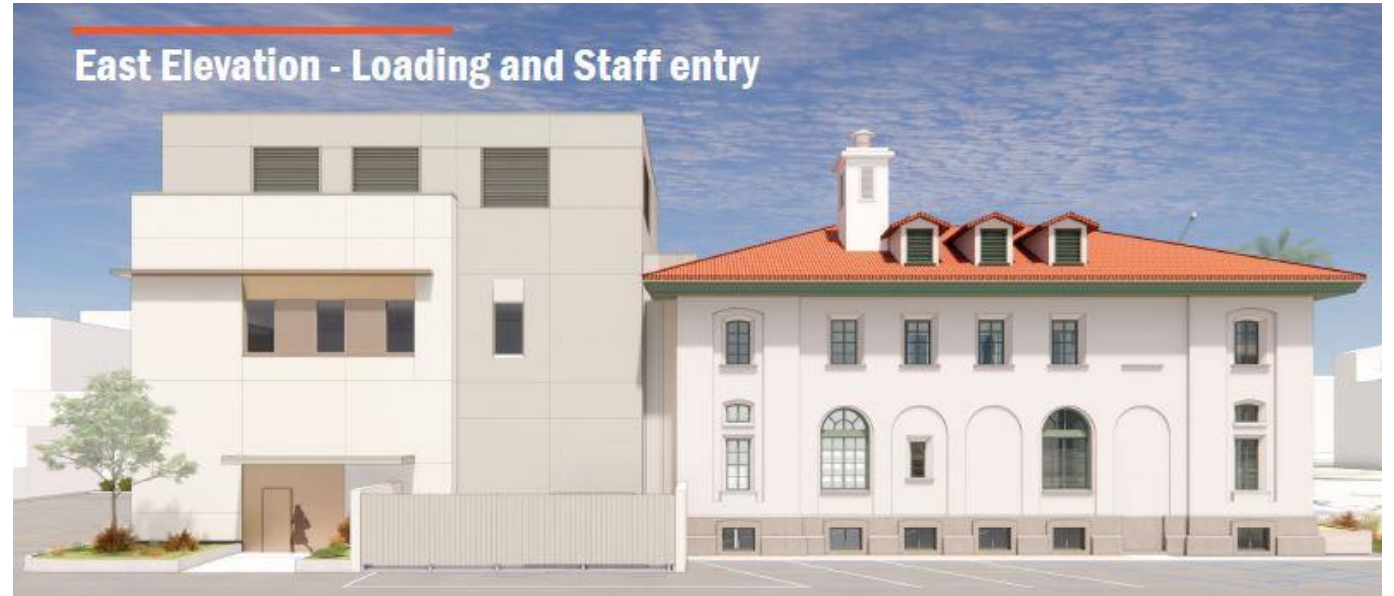
FEATURES

- Significant effort expended to ensure that expansion does not overwhelm historic building at the Mission Inn Avenue elevation.



FEATURES

- Design maintains attractive proportions between old and new
- Cosmetic improvements will be made to historic structure without “restoring” elements removed during previous interventions



FEATURES

- Windows serve as “lenses” directed toward important local sites
- Rectangular structure is visually enhanced by window array yet retains ability to be enlivened by for exterior projections



FEATURES

- Site footprint essentially identical to the present
- Photovoltaic array forms roof terrace shade structure
- Landscaping enhances all elevations



FEATURES

- New Orange Street entrance provides clear sightlines to admission desk, access to other floors
- Glass wall featuring collections provides immediate visual impact



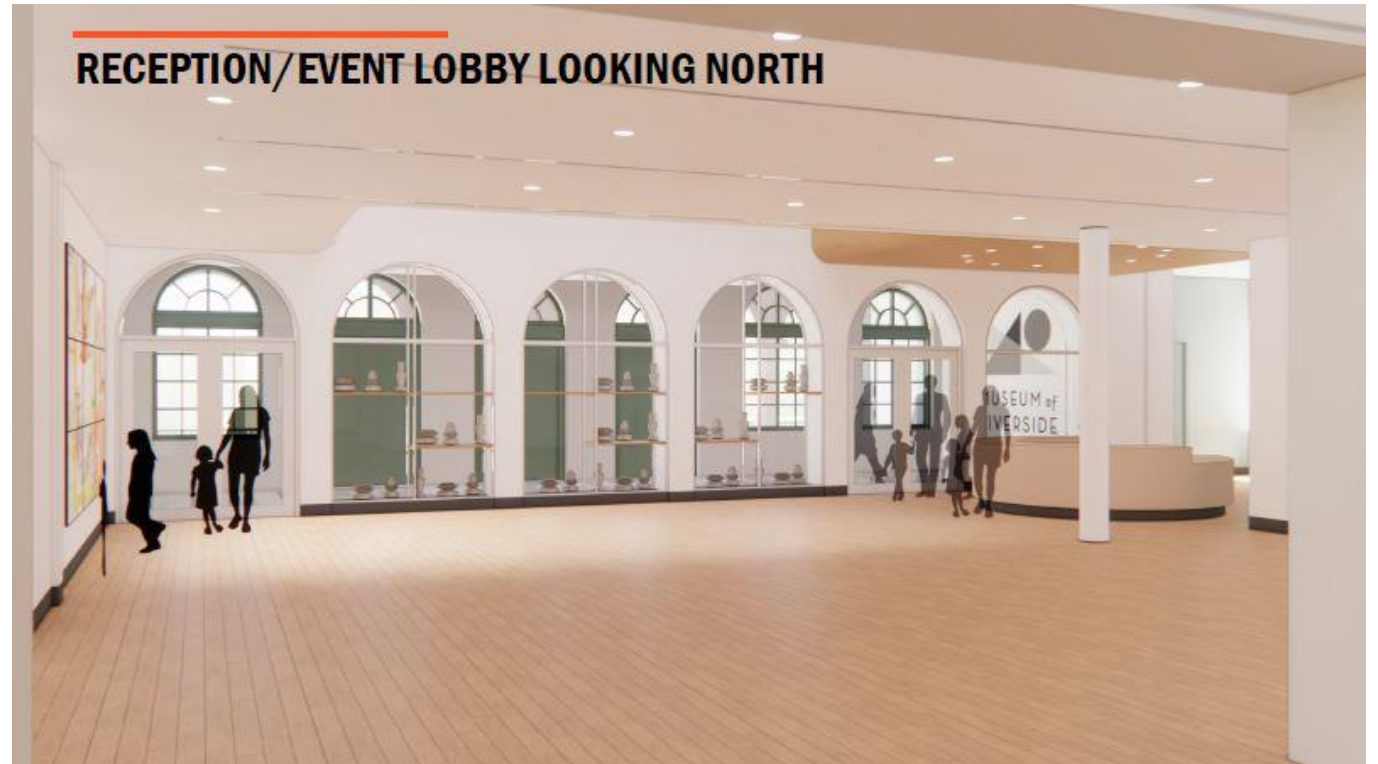
FEATURES

- Spacious integration of old and new structures
- New Nature Lab prominently located on first floor
- Historic south façade symbolically indicated



FEATURES

- Use of historic arches for exhibition
- Doors within arches help maintain gallery environments
- Open space within historic structure available for exhibitions and events



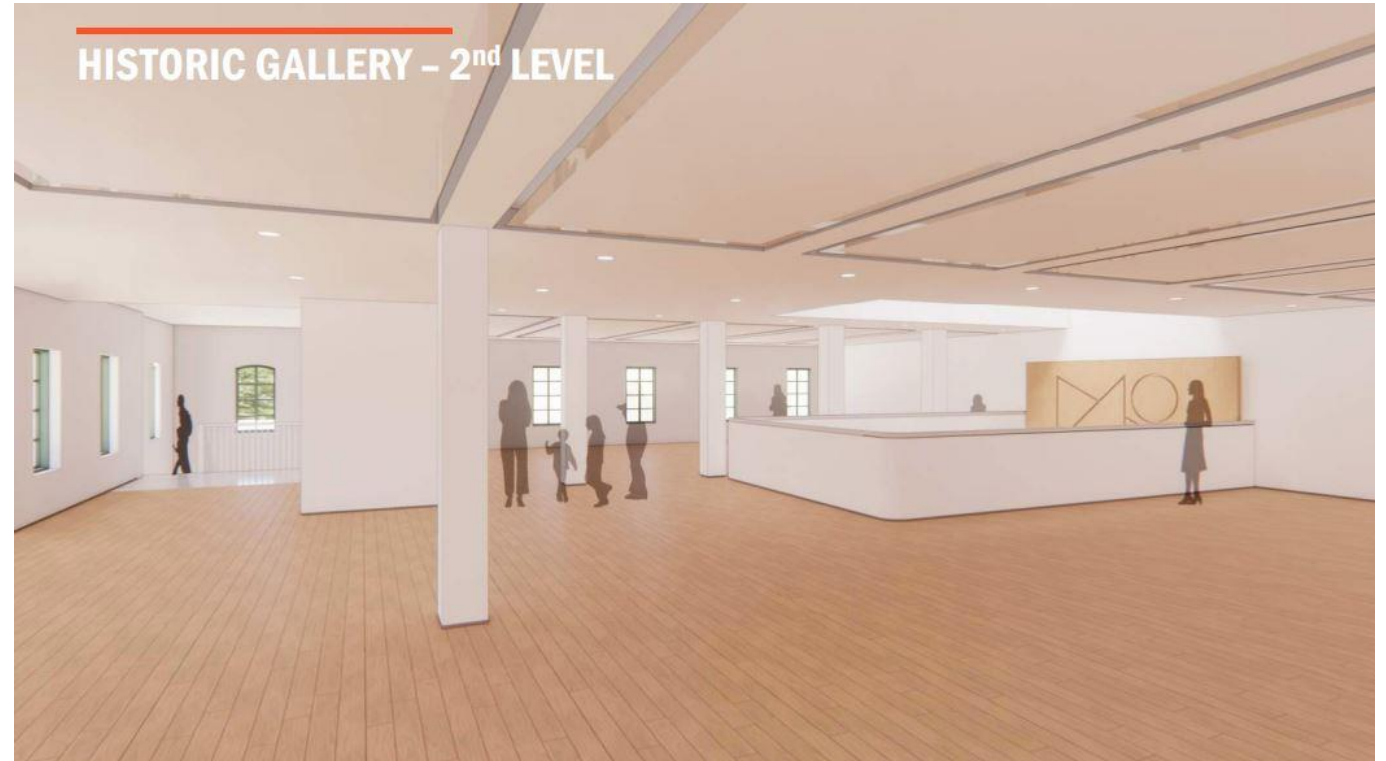
FEATURES

- Old and new structures linked by a bridge, an elevator, and a staircase
- Fixtures and finishes to be neutral in order to foreground exhibition content



FEATURES

- Historic structure will have a less closely controlled environment, requiring staff to select exhibitions with care
- Impactful vertical opening from first floor up to historic skylight



FEATURES

- Roof terrace will be open when museum is open
- Plantings chosen for their teaching value
- A gathering space for programs and events sufficient for 80 to 100 people



FEATURES

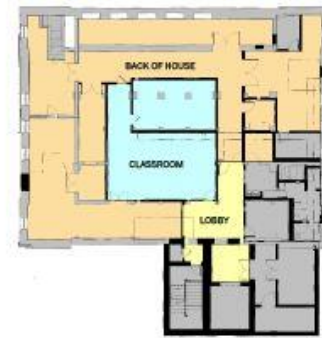
- Safe and enclosed outdoor Nature Lab extension
- Large enough for a class of children
- Plantings chosen for educational versatility



FEATURES

- Floor plans that maximize use for public purposes
- Dedicated classroom in basement (light blue)
- Offices contiguous
- Small conference room

PROPOSED DESIGN



BASEMENT



LEVEL 1

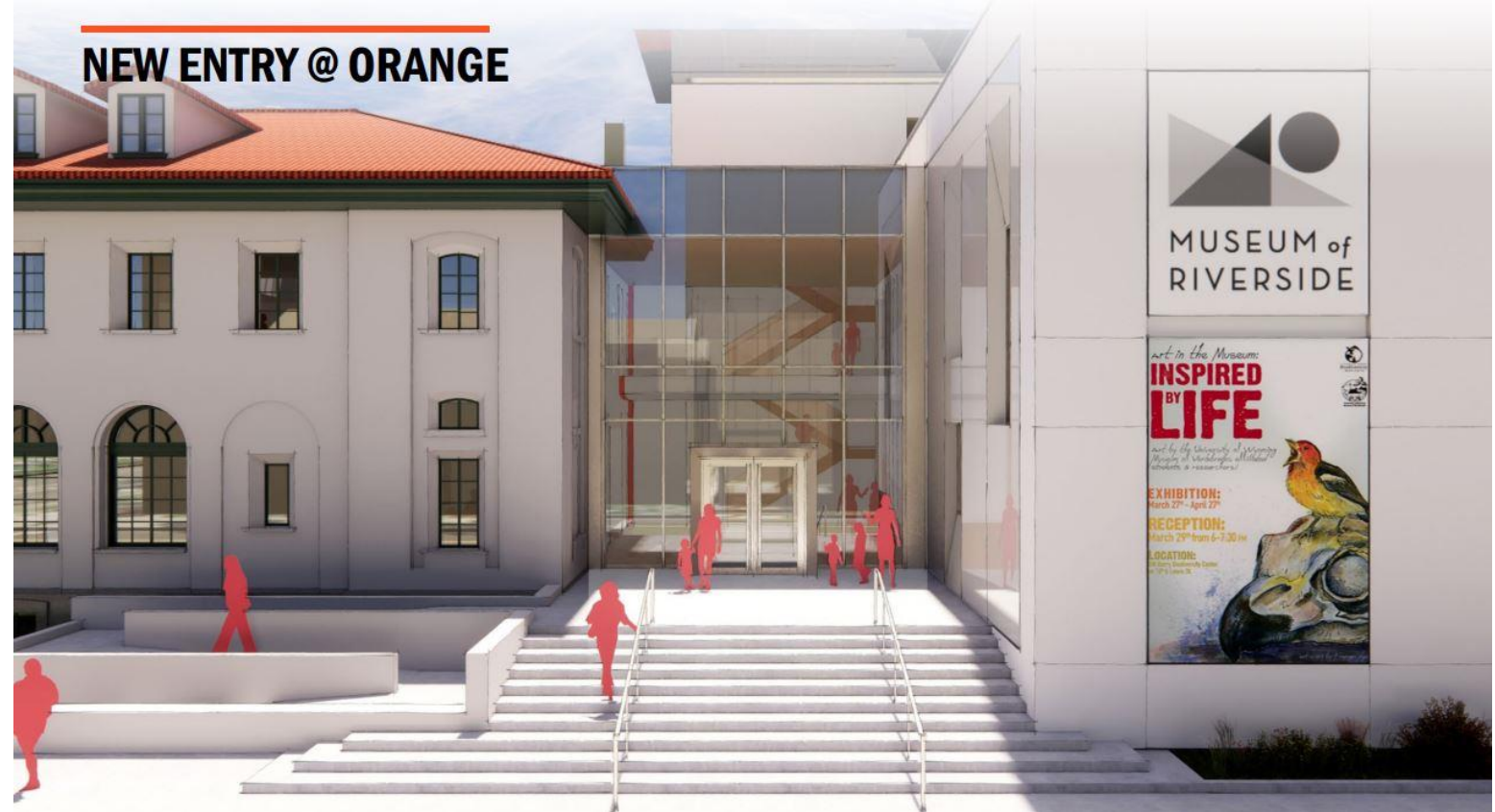


LEVEL 2



THANK YOU

- Questions?
- Robyn G. Peterson
rpeterson@riversideca.gov
951-826-5792



Recommendation

That the Museum of Riverside Board recommend City Council approve the design approach for the renovation and expansion of the Museum of Riverside's downtown site.