



SPC JESUS S DURAN EASTSIDE LIBRARY

Community & Economic Development Department

Cultural Heritage Board

Agenda Item:

November 15

BACKGROUND/HISTORY



DESIGN CONCEPT



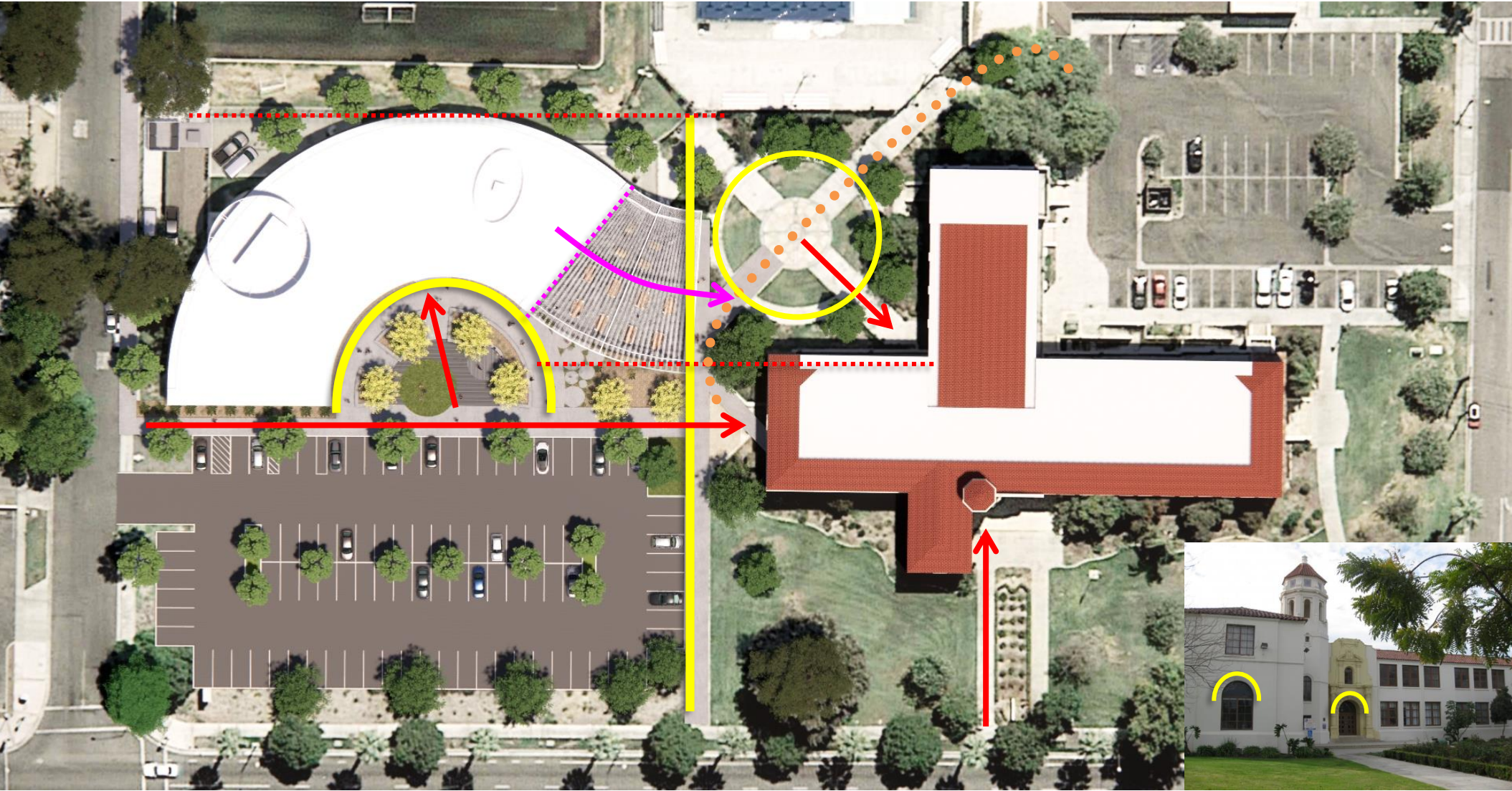
SPC JESUS S DURAN EASTSIDE LIBRARY

CESAR E. CHAVEZ COMMUNITY CENTER



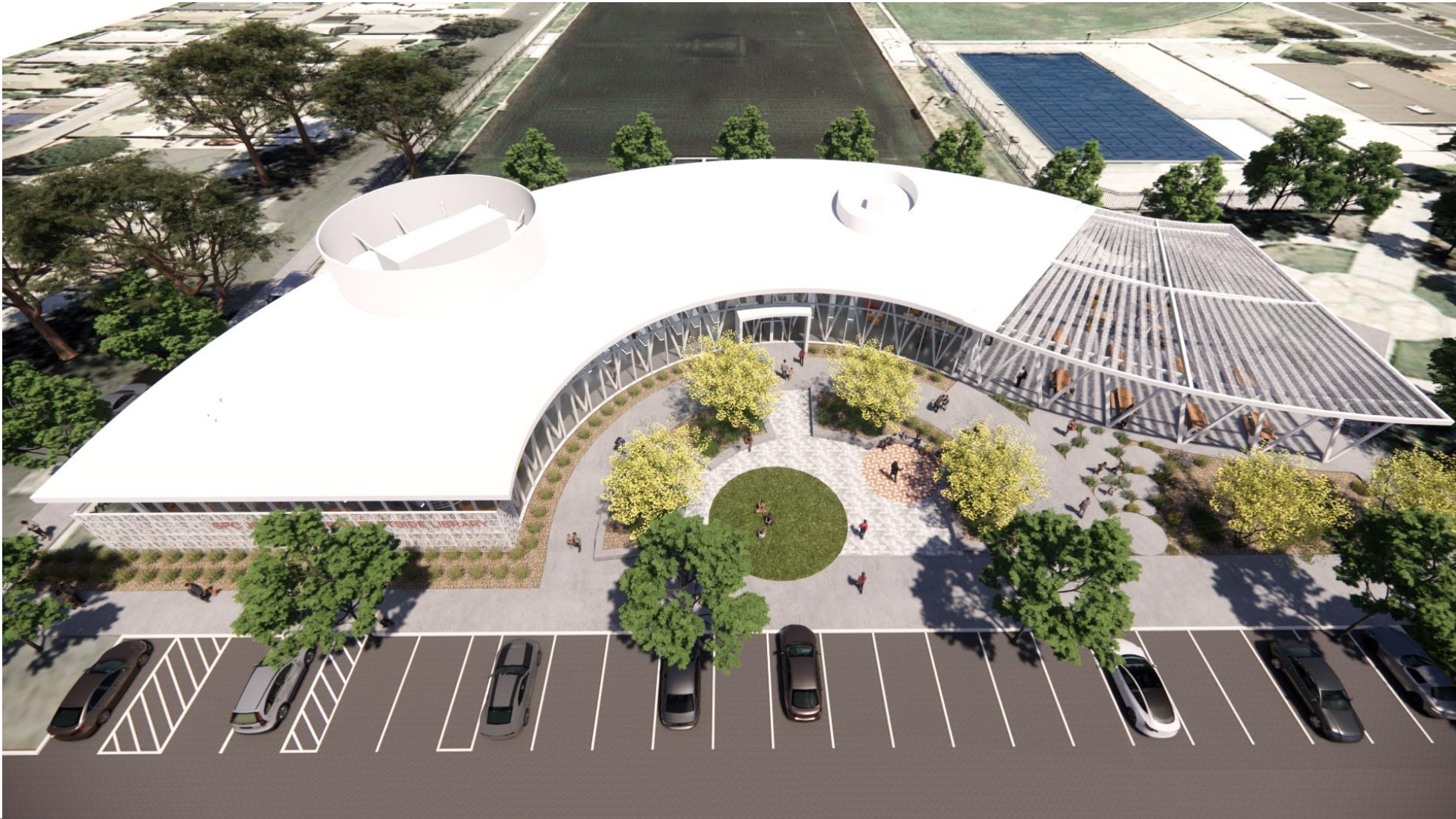
VIEW OF SITE LOOKING SOUTH – Placement and relationship between buildings – Pavilion Character – Lightness and Mass - Contrast – Modern and Historic

DESIGN CONCEPT



SITE PLAN – Crescent arc shape inspiration / Setback clearances maintained / Adjacency potential between exterior canopy and existing outdoor plaza

DESIGN CONCEPT



VIEW OF BUILDING LOOKING SOUTH – Relationship to Parking Lot / Accessibility /
Outdoor Entry Plaza / Shaded Outdoor Programming Area

DESIGN CONCEPT



NORTH ELEVATIONS – Non-competing and supportive relationship to Cesar Chavez. Mid level height.

RiversideCA.gov

DESIGN CONCEPT



NORTH FAÇADE OF LIBRARY – Friendly and welcoming community resource. Patterning and texture imbedded into the design.

RiversideCA.gov

DESIGN CONCEPT



LIBRARY ENTRY PLAZA – Close view of the accessible welcome plaza. Transitional space, passively supervised, providing gathering and programming space.

RiversideCA.gov

DESIGN CONCEPT



INTERIOR CHARACTER – Neutral and calm base palette with pops of color, pattern and texture celebrating the vibrancy of the community.

DESIGN CONCEPT



SCHEMATIC FLOOR PLAN – Illustrating the open flow and visual connectiveness of the interior environment and CEPTED safety planning principles.

STRATEGIC PLAN ALIGNMENT



Strategic Priority No. 1 – Arts, Culture and Recreation

Goal 1.1 – Strengthen Riverside's portfolio of arts, culture, recreation, senior and lifelong learning programs and amenities through expended community partnerships, shared use opportunities and fund development.

RECOMMENDATION

Staff recommends that the Cultural Heritage Board:

1. To receive and file a presentation and provide input on the conceptual designs for the new SPC Jesus S. Duran Eastside Library.