



RIVERSIDE PUBLIC UTILITIES

Board Memorandum

BOARD OF PUBLIC UTILITIES

DATE: JULY 10, 2015

**GENERAL MANAGERS REPORT
ITEM NO: 19**

SUBJECT: MONTHLY POWER SUPPLY REPORT – May 2015

Power Usage:

Wholesale Load (Vista): – 172,322 MWH (Chart 1)

Peak Demand: – 391 MW of which 266 MW came from RVSD available resources (Chart 2)

RVSD Energy Mix (Chart 1):

<u>Resource</u>	<u>MWH</u>
a) Nuclear	8,736
b) Coal	49,643
c) Large Hydroelectric	2,849
d) Natural Gas	867
e) Renewables	45,478
f) Other (BPA)	28,795
g) Inter SC Trades	10,000
h) Green Inter SC Trades	-
i) CAISO Purchases	25,953
Total:	172,322

Total Green Power Supply – **45,478 MWH** which yields 26.39% of the Total Wholesale Load Requirement

Resource Availability:

Nuclear: Palo Verde units 1, 2 and 3 operated at 90.32% capacity factor for the month.

Coal: IPP units 1 and 2 operated at 48.70% capacity factor for the month.

Large Hydro: Hoover, RVSD's capacity entitlement was 20 MW, with energy entitlement of 2,849 MWH.

Natural Gas: Clearwater's availability was 91.26% for the month.
RERC's (Units 1, 2, 3 and 4) availability was 99.61% for the month.
Springs's (Units 1, 2, 3 and 4) availability was 89.82% for the month.

Renewable: Salton Sea units operated at 99.10% capacity factor for the month.
Wintec operated at 37.88% capacity factor.
WKN operated at 16.67% capacity factor.
Camelot Solar operated at 48.18% capacity factor.
Transwind operated at 22.24% capacity factor.

The attached graphical comparisons represents RPU's December:

Chart 1: Total Energy Requirements/Resource Mix

Chart 2: Peak Hour Total Capacity

Chart 3: Retail Customer Load

Chart 4: Daily Peak Load and Temperature Comparisons

Chart 5: Monthly Peak Load and Temperature

Chart 1
Total Energy Requirements/Resource Mix - May

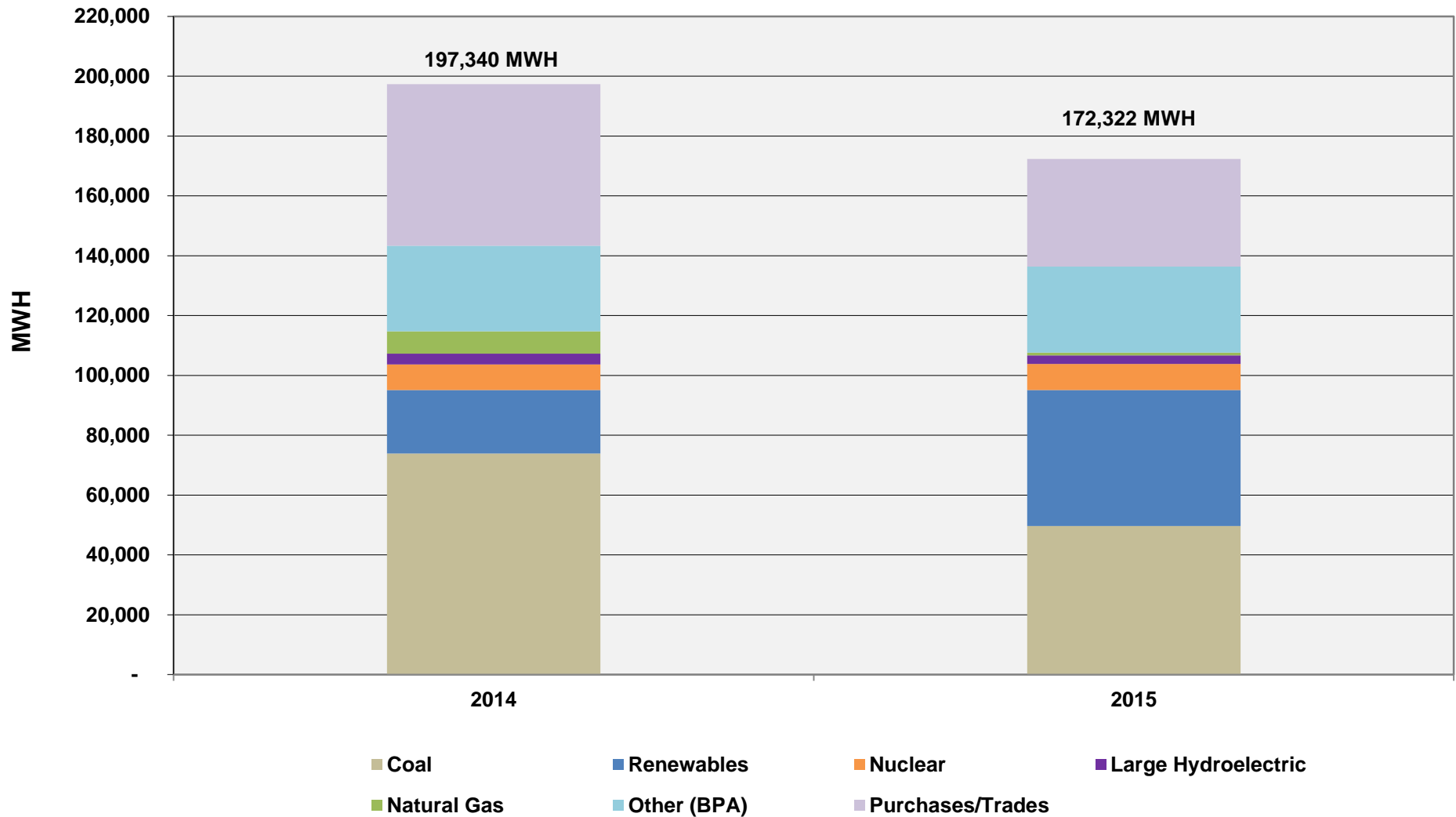


Chart 2
Peak Hour Total Capacity - May

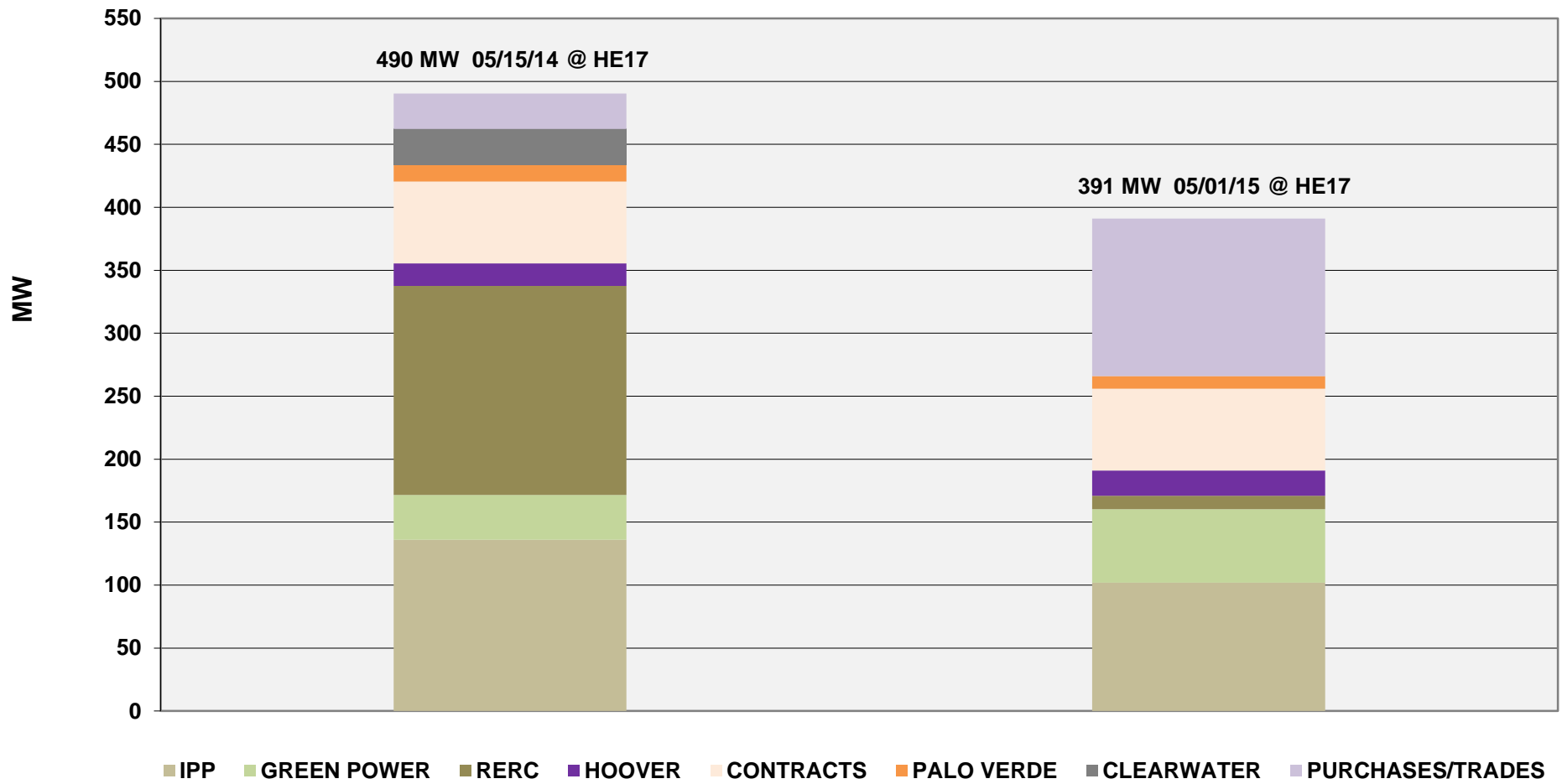


Chart 3
Retail Customer Load - May

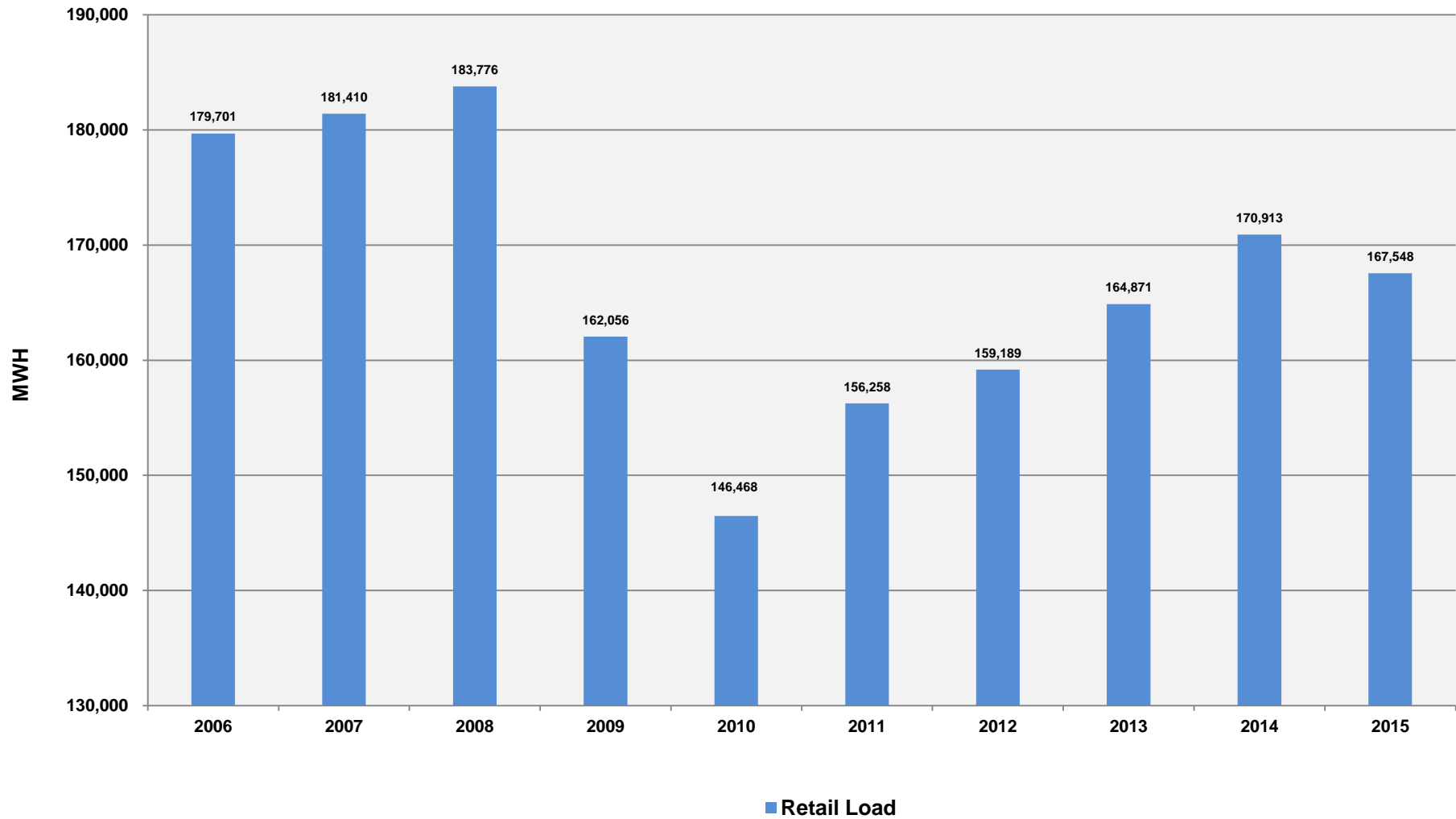


Chart 4
Daily Peak Load and Temperature Comparisons
May

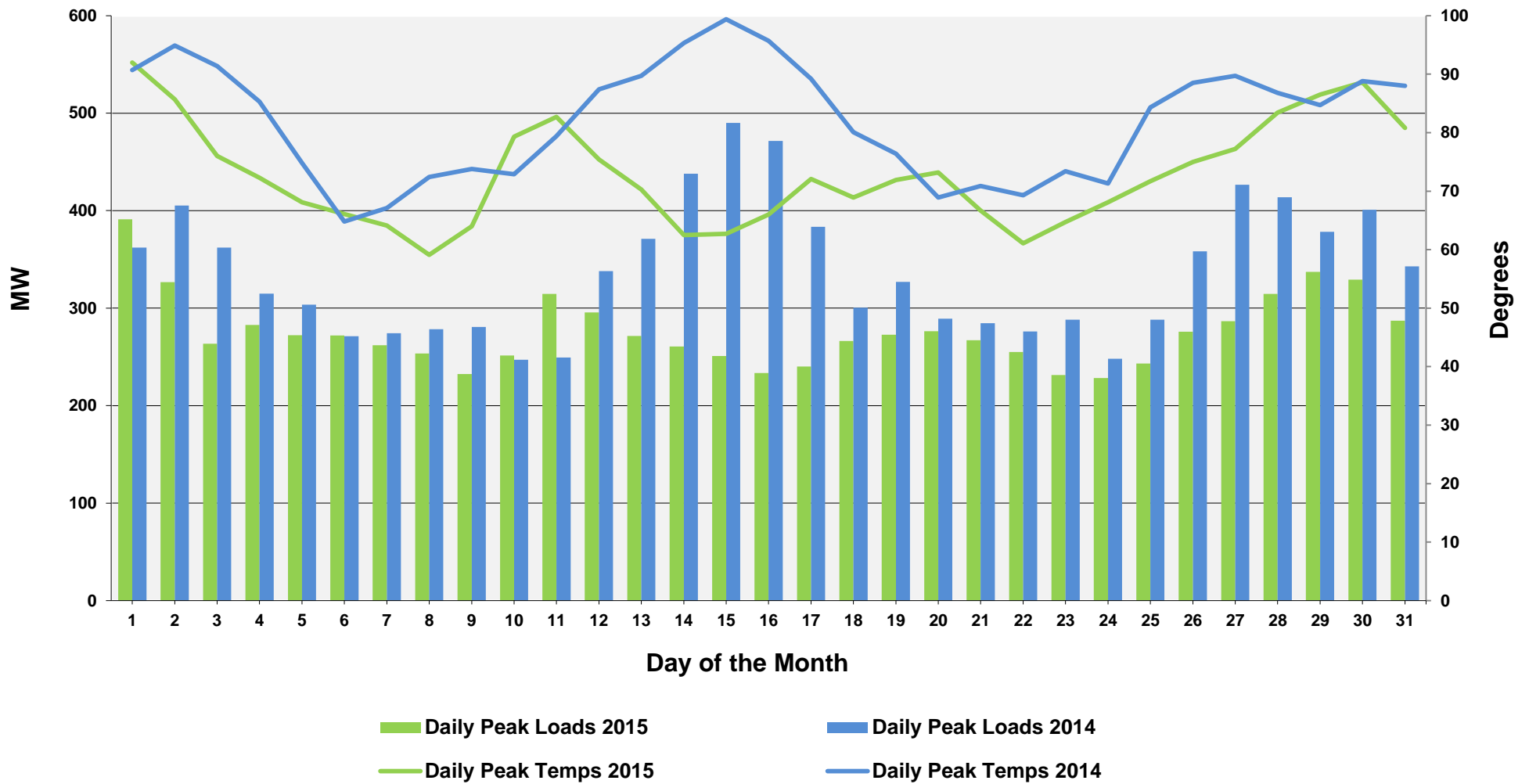


Chart 5
Monthly Peak Load & Temperature

