



# Riverside Restorative Growthprint – Climate Action Plan/Economic Prosperity Action Plan

---

Community & Economic Development Department

**Utility Services/Land Use/Energy  
Development Committee  
August 6, 2015**

# BACKGROUND

- City received a SCAG Sustainability grant to develop the Riverside Restorative Growthprint (RRG)
  - Economic Prosperity Action Plan (EPAP)
  - Climate Action Plan (CAP)
- Builds upon existing plans and programs
  - Seizing our Destiny Report
  - Green Action Plan
  - WRCOG Subregional CAP



# PROJECT OBJECTIVES

- Develop measures to reduce GHG emissions (to 49% below baseline by 2035)
- Inspire **entrepreneurial opportunities** and job creation
- Facilitate **Smart Growth** development and stimulate sustainable infrastructure investment
- Develop a tracking tool to monitor progress
- Inform, engage and collaborate with stakeholders



# ECONOMIC PROSPERITY ACTION PLAN (RRG-EPAP)

- Identifies GHG reduction measures that have potential to spur economic development and inspire entrepreneurship
- Identifies recommendations to facilitate Smart Growth development and stimulate sustainable infrastructure investment

## **Plan Development**

RRG-CAP Analysis

Outreach & Engagement

Competitive Landscape Research



## **EPAP Recommendations**

Smart Growth Strategies

Implementation Plan

Promotional Strategy



# RRG-CAP ANALYSIS: ENTREPRENEURSHIP OPPORTUNITY AREAS

## What is an EOA?

A strategy or measure that aims to inspire entrepreneurship and spur economic development and prosperity.

Ten GHG reduction measures identified as the most viable and economically beneficial:

1. Energy and Water Upgrades for Home or Business
2. Green Building Standards
3. Clean Vehicles and Charging/Fueling Stations
4. RPU Clean Technology Funding
5. Waste Reduction
6. Expand Bicycle Infrastructure
7. Eco Business Zone
8. Cleantech Incubator
9. Buy and Produce Local Initiative
10. Wild Card / Global Markets



# RRG-EPAP DEVELOPMENT: OUTREACH & ENGAGEMENT

## Influencer Workshops – November 2014

Forty Riverside Community members discussed GHG reduction efforts and opportunities to inspire economic development

- Presentation from Los Angeles Cleantech Incubator representative
- Presented “Top 10 EOAs”
- Facilitated “brainstorming” activity and discussion to share perspectives and ideas on Riverside’s competitive advantages and available resources



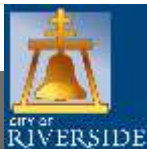
# RRG-EPAP DEVELOPMENT: OUTREACH & ENGAGEMENT

## Crowdsourcing & Research Campaign

January & February 2015

- Engaged local residents and a global audience for idea sharing
- Solicited feedback and input from a wide knowledge base
- Obtained a perspective beyond the Riverside community
- Learned from the successes and experiences of similar programs around the world

## Crowdsourcing Platforms:



# COMPETITIVE LANDSCAPE RESEARCH

## Riverside Business Leader Interviews

- Individual interviews with business leaders to gather insight on the “Top 10 EOAs,” ideas for incentive programs and funding recommendations

## Research & Analysis of Competitive Landscape

- Survey interviews with economic development representatives from other cities and regions to gather insight from their experiences
  - Los Angeles, California - LACI
  - San Jose, California – PROSPECT Silicon Valley
  - Portland, Oregon – Economic Development Office
  - New York City, New York – Economic Development Office
- Review of the 2014 U.S. Clean Tech Leadership Index, and analyze factors leading to success of cities in leadership positions across:
  - Advanced Transportation
  - Green Building
  - Clean-tech Investment
  - Clean Electricity



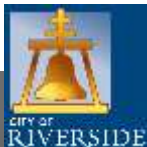


# 2014 METRO INDEX OVERVIEW

## METRO INDEX



| RANK | +/- | METRO AREA         | LEADERSHIP SCORE |
|------|-----|--------------------|------------------|
| 1    | 0   | San Francisco, CA  | 94.4             |
| 2    | 0   | San Jose, CA       | 79.7             |
| 3    | 4   | San Diego, CA      | 66.3             |
| 4    | -1  | Portland, OR       | 62.9             |
| 5    | 1   | Sacramento, CA     | 61.0             |
| 6    | 4   | Boston, MA         | 56.2             |
| 7    | -3  | Los Angeles, CA    | 56.0             |
| 8    | -3  | Washington, DC     | 53.6             |
| 9    | 2   | Austin, TX         | 51.3             |
| 10   | -2  | Denver, CO         | 49.7             |
| 11   | 2   | Seattle, WA        | 48.2             |
| 12   | 0   | Chicago, IL        | 41.1             |
| 13   | 2   | Dallas, TX         | 37.6             |
| 14   | 2   | Houston, TX        | 37.0             |
| 15   | -1  | Minneapolis, MN    | 35.6             |
| 16   | 8   | Atlanta, GA        | 35.0             |
| 17   | -4  | Salt Lake City, UT | 33.7             |
| 18   | 4   | Oklahoma City, OK  | 33.3             |
| 19   | 7   | Detroit, MI        | 32.1             |
| 20   | 3   | Hartford, CT       | 31.2             |
| 21   | -2  | Philadelphia, PA   | 31.1             |
| 22   | 4   | Riverside, CA      | 30.6             |
| 23   | -2  | New York, NY       | 29.5             |
| 24   | -1  | Raleigh, NC        | 28.5             |
| 25   | 0   | Milwaukee, WI      | 28.4             |
| 26   | -6  | Phoenix, AZ        | 28.0             |
| 27   | 1   | Nashville, TN      | 26.9             |
| 28   | 11  | Pittsburgh, PA     | 26.6             |
| 29   | 0   | Charlotte, NC      | 25.8             |
| 30   | 2   | Indianapolis, IN   | 23.6             |
| 31   | -4  | Kansas City, MO    | 22.1             |
| 32   | 3   | Columbus, OH       | 20.5             |
| 33   | 1   | Providence, RI     | 20.1             |
| 34   | -4  | Las Vegas, NV      | 19.5             |
| 35   | 4   | Buffalo, NY        | 18.8             |
| 36   | -3  | Baltimore, MD      | 18.5             |
| 37   | 5   | San Antonio, TX    | 17.0             |
| 38   | 3   | Virginia Beach, VA | 16.4             |
| 39   | -2  | Orlando, FL        | 16.3             |
| 40   | 4   | Cleveland, OH      | 15.8             |
| 41   | 2   | Louisville, KY     | 15.7             |
| 42   | -2  | Cincinnati, OH     | 15.6             |
| 43   | -5  | Richmond, VA       | 15.1             |
| 44   | 0   | St. Louis, MO      | 15.1             |
| 45   | 0   | Tampa, FL          | 14.0             |
| 46   | 0   | Miami, FL          | 11.7             |
| 47   | 1   | Memphis, TN        | 10.4             |
| 48   | -1  | Jacksonville, FL   | 9.2              |
| 49   | 0   | New Orleans, LA    | 8.4              |
| 50   | 0   | Birmingham, AL     | 4.1              |



# 2015 METRO INDEX OVERVIEW

## METRO INDEX



#16

| RANK | +/- | METRO AREA         | LEADERSHIP SCORE |
|------|-----|--------------------|------------------|
| 1    | 0   | San Francisco, CA  | 86.5             |
| 2    | 0   | San Jose, CA       | 80.6             |
| 3    | 1   | Portland, OR       | 59.7             |
| 4    | -1  | San Diego, CA      | 55.5             |
| 5    | 3   | Washington, DC     | 55.2             |
| 6    | 1   | Los Angeles, CA    | 53.8             |
| 7    | 4   | Seattle, WA        | 52.2             |
| 8    | -2  | Boston, MA         | 49.2             |
| 9    | 0   | Austin, TX         | 46.4             |
| 10   | 2   | Chicago, IL        | 45.8             |
| 11   | -1  | Denver, CO         | 43.5             |
| 12   | -7  | Sacramento, CA     | 42.7             |
| 13   | 2   | Minneapolis, MN    | 37.8             |
| 14   | 9   | New York, NY       | 36.4             |
| 15   | 1   | Atlanta, GA        | 36.4             |
| 16   | 6   | Riverside, CA      | 34.8             |
| 17   | 4   | Philadelphia, PA   | 32.5             |
| 18   | -1  | Salt Lake City, UT | 28.9             |
| 19   | -6  | Dallas, TX         | 28.9             |
| 20   | -1  | Detroit, MI        | 28.4             |
| 21   | 11  | Columbus, OH       | 27.5             |
| 22   | -8  | Houston, TX        | 27.3             |
| 23   | 3   | Phoenix, AZ        | 27.0             |
| 24   | -6  | Oklahoma City, OK  | 25.2             |
| 25   | 3   | Pittsburgh, PA     | 24.4             |
| 26   | 10  | Baltimore, MD      | 24.2             |
| 27   | 2   | Charlotte, NC      | 23.7             |
| 28   | -1  | Nashville, TN      | 22.7             |
| 29   | 2   | Kansas City, MO    | 21.7             |
| 30   | -6  | Raleigh, NC        | 21.7             |
| 31   | 3   | Las Vegas, NV      | 21.6             |
| 32   | -12 | Hartford, CT       | 20.6             |
| 33   | -8  | Milwaukee, WI      | 20.6             |
| 34   | -4  | Indianapolis, IN   | 20.5             |
| 35   | 5   | Cleveland, OH      | 19.6             |
| 36   | -3  | Providence, RI     | 19.4             |
| 37   | 1   | Virginia Beach, VA | 18.5             |
| 38   | -3  | Buffalo, NY        | 18.4             |
| 39   | 5   | St. Louis, MO      | 17.4             |
| 40   | -3  | San Antonio, TX    | 17.2             |
| 41   | 1   | Cincinnati, OH     | 15.6             |
| 42   | 1   | Richmond, VA       | 14.5             |
| 43   | -2  | Louisville, KY     | 13.3             |
| 44   | 2   | Miami, FL          | 12.3             |
| 45   | -6  | Orlando, FL        | 11.9             |
| 46   | -1  | Tampa, FL          | 10.0             |
| 47   | 1   | Jacksonville, FL   | 7.3              |
| 48   | -1  | Memphis, TN        | 6.2              |
| 49   | 0   | New Orleans, LA    | 5.0              |
| 50   | 0   | Birmingham, AL     | 2.5              |

CLEAN EDGE

© 2015 Clean Edge, Inc. [www.cleandata.com](http://www.cleandata.com). This report, and the models and analysis contained herein, are the property of Clean Edge and may not be reproduced, published, or summarized for distribution or incorporation into a report or other document without prior approval.

28

## #4 – Advanced Transportation



# RIVERSIDE'S 2015 SCORECARD

## AT-A-GLANCE

Riverside placed in the top 50 Metro areas for the four major categories used by the Clean Tech Leadership Metro Index:

|   | <b><u>2015</u></b> | <b><u>2014</u></b> |
|---|--------------------|--------------------|
| Green Buildings                               | #37                | #41                |
| Advanced Transportation                       | #4                 | #10                |
| Clean Electricity & Carbon Management         | #14                | #13                |
| Clean Tech Investment, Innovation & Workforce | #44                | #45                |



# RRG-EPAP RECOMMENDATIONS

Implementation Plan focuses on **five overarching strategies** aimed at effectively and efficiently facilitating Smart Growth development by stimulating more sustainable infrastructure investment:



**Placemaking**



**RRG Policy Lens**



**Smart Growth Infrastructure**



**Community Connections**



**Future Leaders**

# RRG-EPAP NEXT STEPS

4-step implementation process:

- 1) Ownership
- 2) Resources
- 3) Plan Timeline
- 4) Engagement

A Promotional Strategy to help to raise awareness both internally and externally in development to include:

- 2016 Speaking Schedule – submit abstracts to showcase Riverside at key conferences
- Presentation Materials
- Social Media Strategy
- Annual Clean-tech Symposium



# CLIMATE ACTION PLAN (RRG-CAP)

- Roadmap for the City of Riverside to achieve deep GHG emissions through the year 2035
- Establishes policies and priorities enabling the City to implement strategies that fulfill the requirements of State initiatives, AB 32 and SB 375
- Aligns with the City's planning priorities and its vision of a future economy based on “clean, green businesses and business practices”



# CLIMATE ACTION PLANNING PROCESS

1

- Inventory and forecast emissions

2

- Establish reduction targets

3

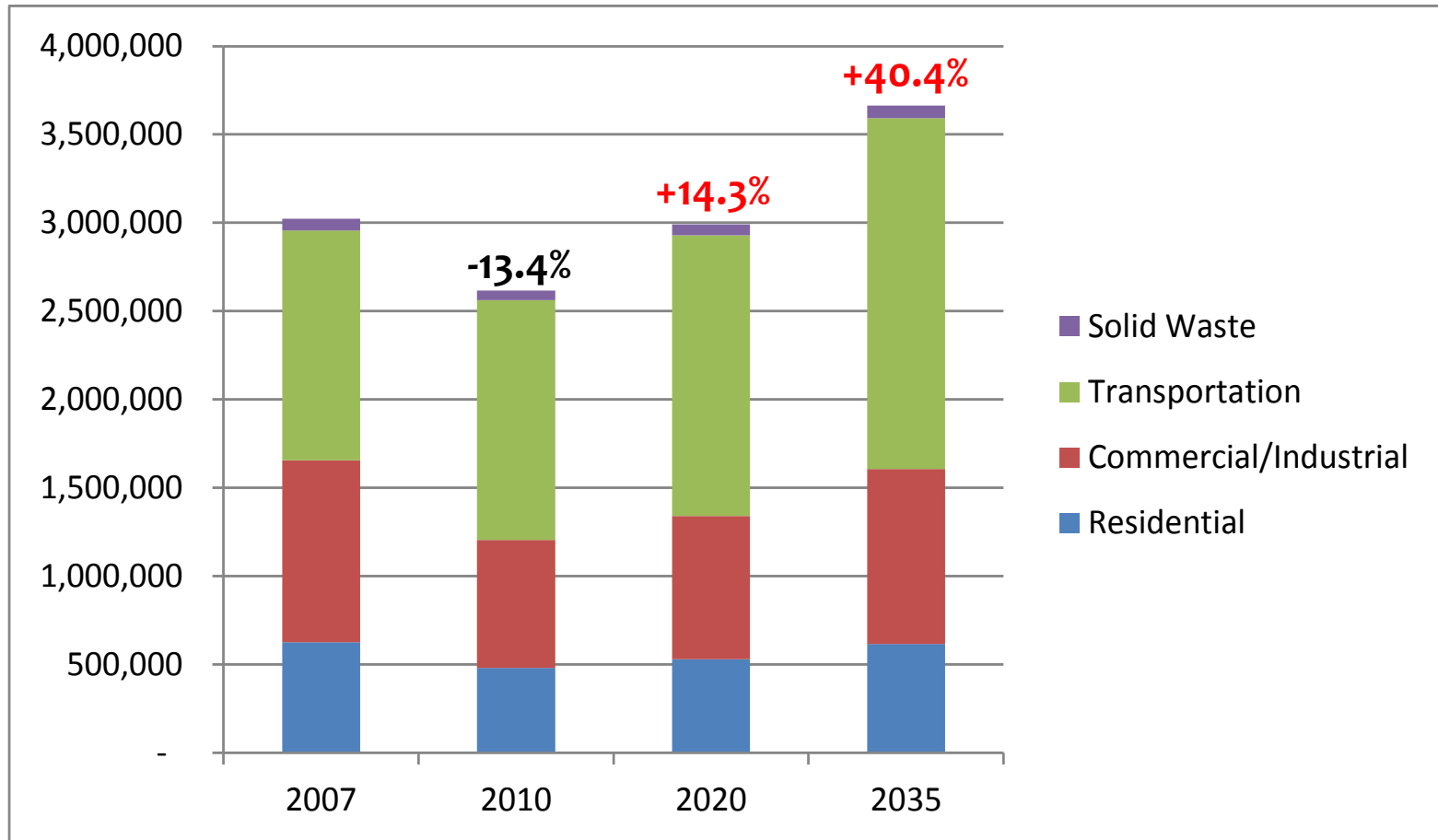
- Develop Climate Action Plan

4

- Implement plan and monitor results



# COMMUNITY EMISSIONS INVENTORY AND FORECASTS BY SECTOR



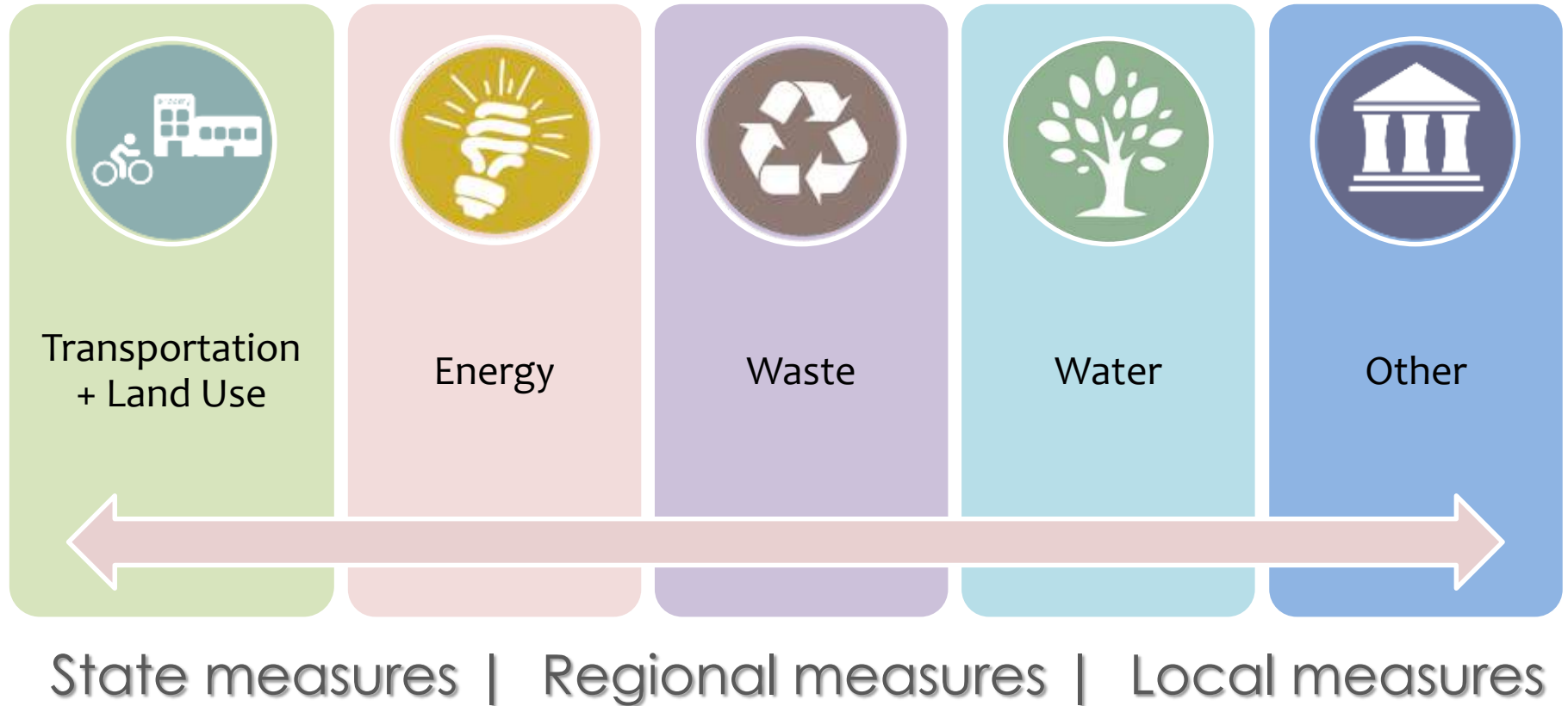


# EMISSIONS TARGETS

- Align with AB 32 (2020) and SB 375 (2035)
- Align with WRCOG Subregional CAP targets
- Aligns with Executive Orders S-3-05 and B-30-15
- Recommended reduction **targets**:
  - 15% below 2010 emissions by 2020
    - 26.4% below 2007 baseline by 2020
  - 49% below 2007 baseline by 2035



# DEVELOPING EMISSIONS REDUCTION MEASURES



# REDUCTION MEASURES CRITERIA AND ANALYSIS

- GHG Reduction Potential (MT CO<sub>2</sub>e/year)
- Synergy with RRG-EPAP (high, medium, low)
- Relative Cost Effectiveness (high, medium, low)
- Ease of Implementation (high, medium, low)



# LOCAL ECONOMY AND OTHER COMMUNITY BENEFITS



**Local Economic  
Opportunities**



**Energy**



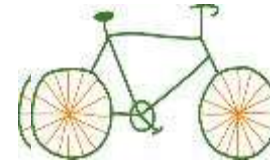
**Public  
Health**



**Local  
Jobs**



**Resources**

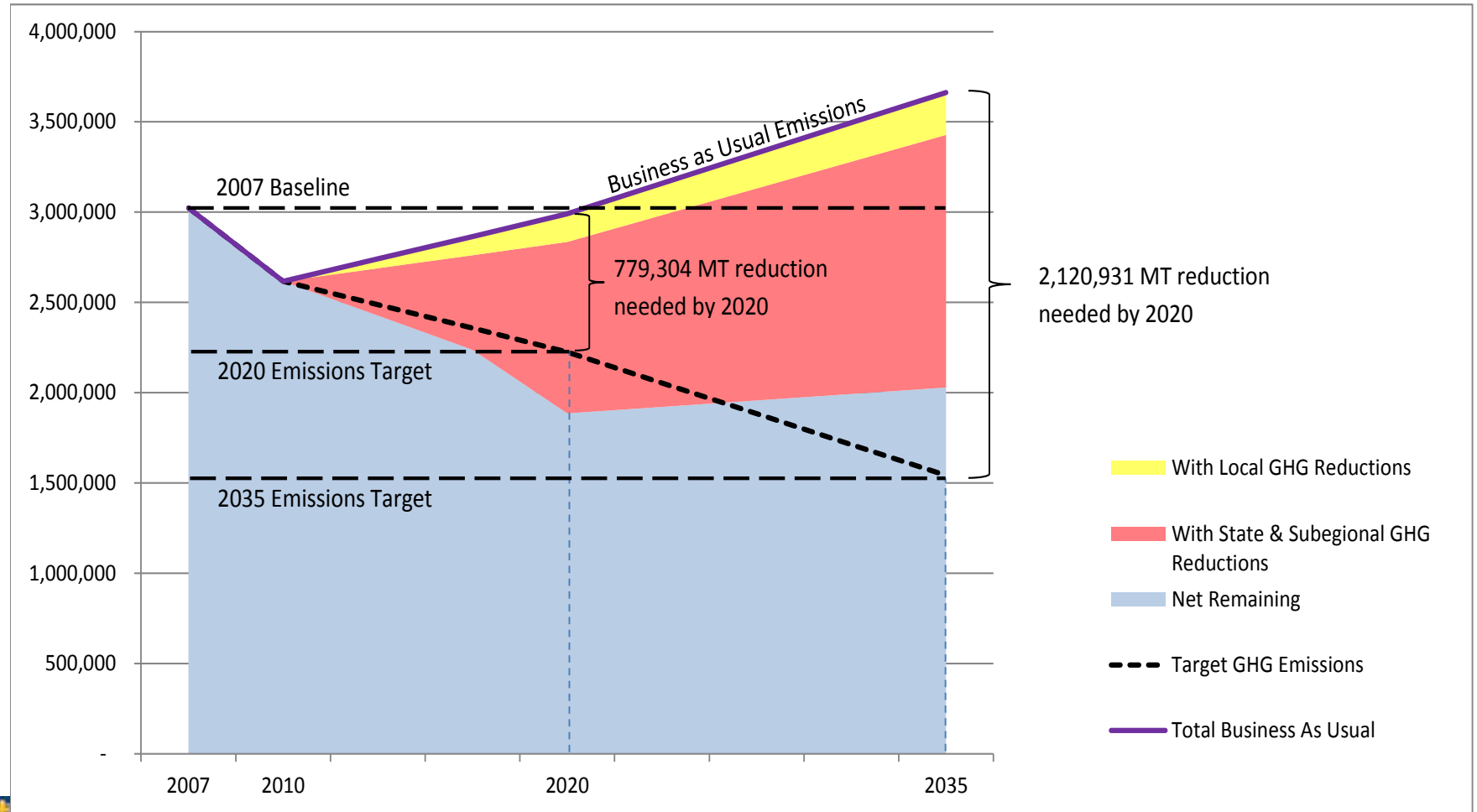


**Mobility**

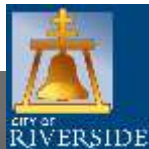
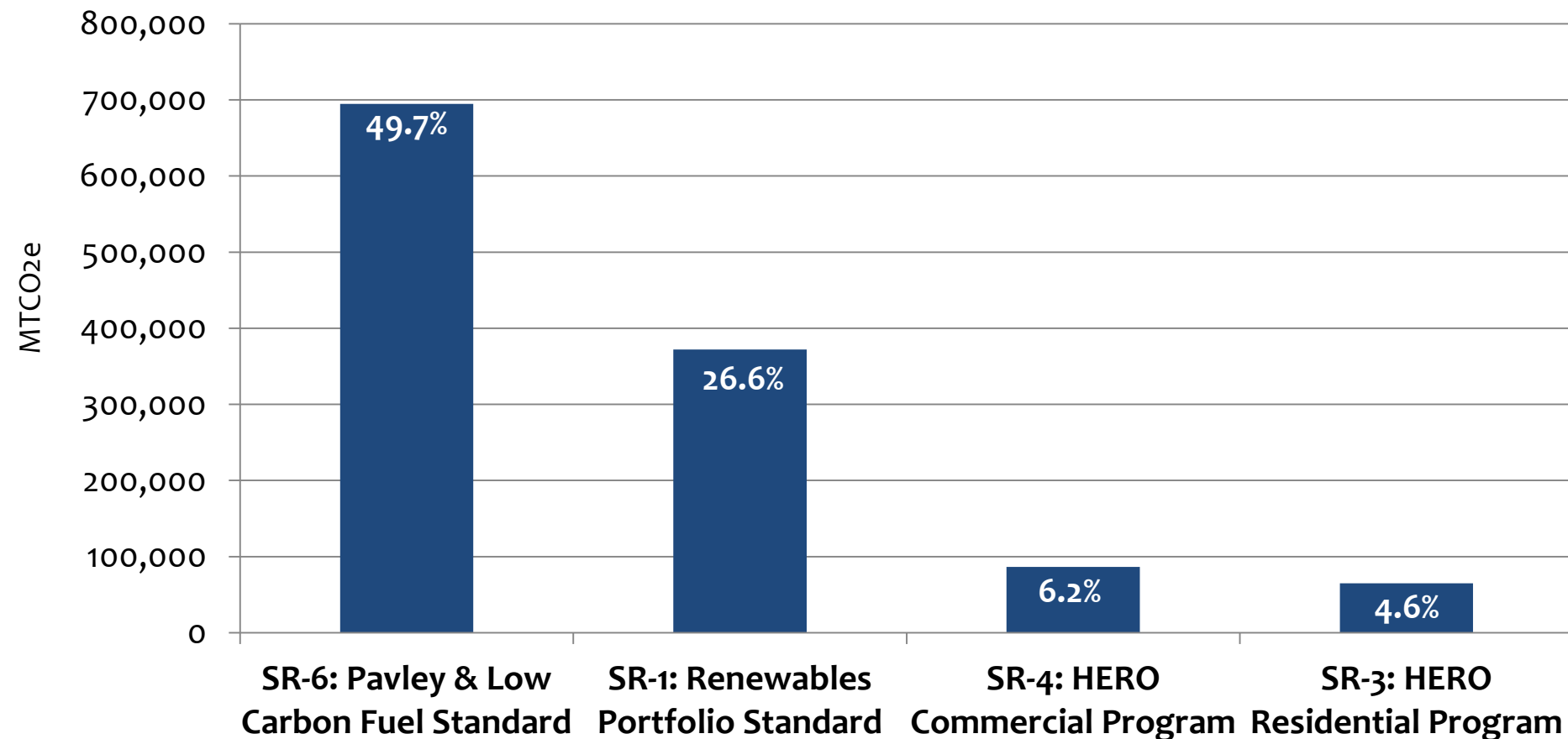


**Placemaking**

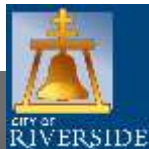
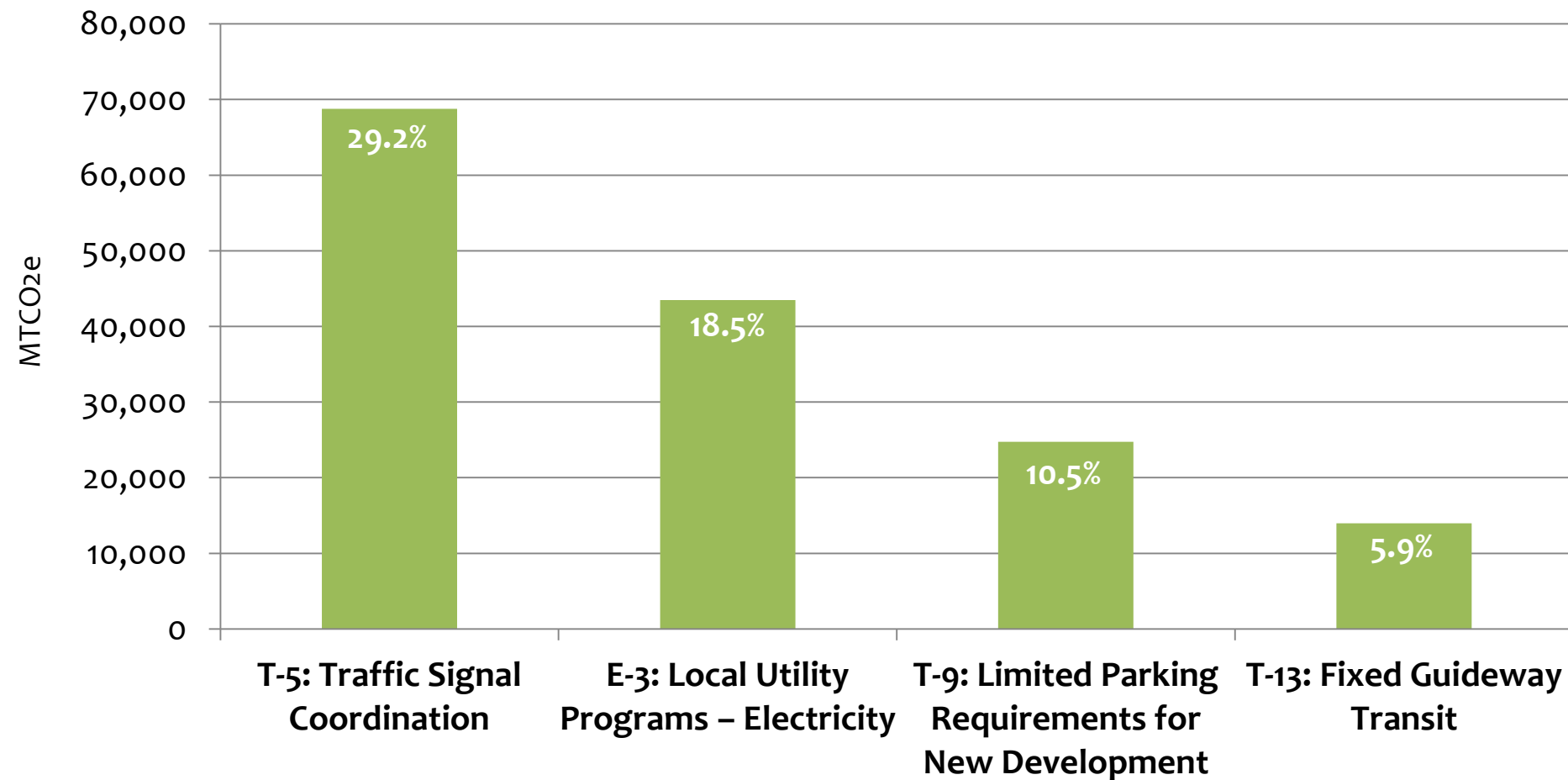
# REDUCTIONS ACHIEVED THROUGH STATE, REGIONAL, AND LOCAL MEASURES



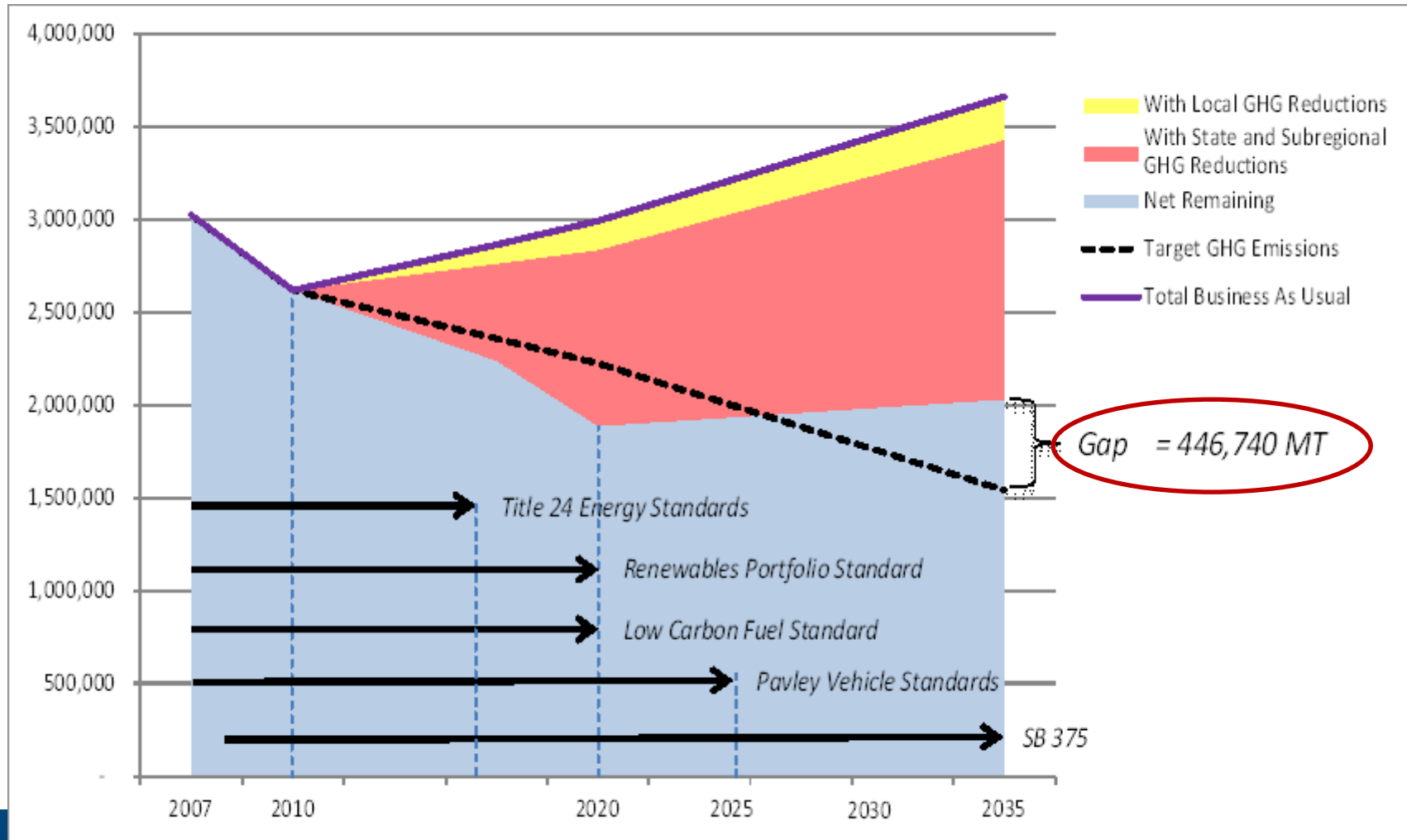
# GHG REDUCTION POTENTIAL TOP 4 STATE/REGIONAL MEASURES



# GHG REDUCTION POTENTIAL TOP 4 LOCAL MEASURES



# IMPACT OF REDUCTION MEASURES ON GHG TARGETS





# STRATEGIES TO CLOSE THE GAP TO REACH 2035 TARGET

Governor's EO B-30-15 and recent policy & technology developments suggest that the greatest potential for additional GHG reductions in Riverside can be achieved through strategies to:

- Reduce vehicle miles traveled (VMT)
- Low-carbon fuels and vehicles
- Low-carbon electricity
- Energy efficiency



# STRATEGIES TO CLOSE THE GAP TO REACH 2035 TARGET

- Two Scenarios outlined to close the GAP to reach the 2035 Target



- State Actions between now and 2020 will better inform an appropriate Local Scenario approach out to 2035.



- By 2020, Local Actions (Scenario 1 or 2) plus State Actions to reach the 2035 target to be included in RRG 2.0 and General Plan update



# SCENARIO 1: EMPHASIS ON TECHNOLOGY AND MARKET TRANSFORMATION

- **Key State Actions**

- Advanced vehicle efficiency standards that go beyond Pavley II
- Stricter requirements for low carbon fuels
- Policies that promote electrification of transportation / building sectors
- Policies that drive technological advancement in energy storage
- More stringent renewables portfolio standard: mandate for electric utilities to achieve 50% to 60% renewables by 2035
- More stringent Title 24 energy efficiency standards for new buildings
- Programs and incentives to improve energy efficiency in existing buildings



# SCENARIO 1: EMPHASIS ON TECHNOLOGY AND MARKET TRANSFORMATION

- **Key Local Actions**

- RPU to achieve 50% to 60% renewables in electricity mix by 2035
- City to secure and dedicate resources for local energy efficiency programs
- City to support low carbon vehicle/fuel infrastructure
- City to incentive or require lower VMT associated with land use development through TOD, parking restrictions, and TDM programs
- City to enforce the state's increasingly stringent building standards
- Enhance water conservation



# SCENARIO 2: EMPHASIS ON LOCAL LAND USE CHANGES

- **Key State Actions:**

- Regional land use and transportation policy and funding streams that further incentivizes transit system development and VMT reduction through transit-oriented development and other land use strategies
- More stringent renewables portfolio standard: mandate for electric utilities to achieve 50% to 60% renewables by 2035
- More stringent Title 24 energy efficiency standards for new buildings
- Programs and incentives to improve energy efficiency in existing buildings



# SCENARIO 2: EMPHASIS ON LOCAL LAND USE CHANGES

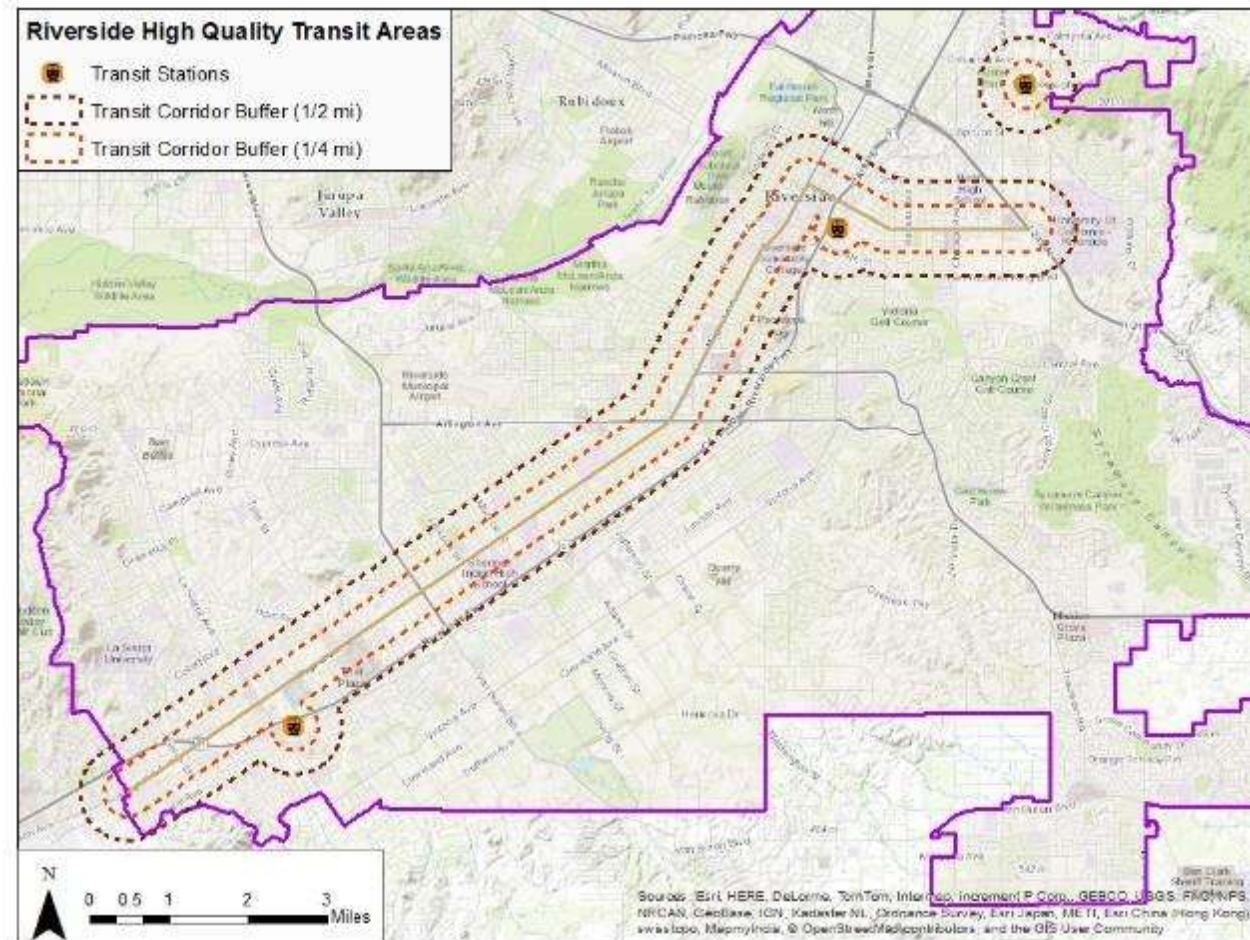
- **Key Local Actions:**

- Same as Scenario 1, plus aggressive local land use policies and zoning changes that significantly reduce VMT
- Specifically, growth directed toward identified HQTAs including the Magnolia/University Avenue corridor and Metrolink stations
- Land use mix and development density within HQTAs need to increase significantly (minimum 20 du/ac) to achieve a 30% increase in household-employment densities

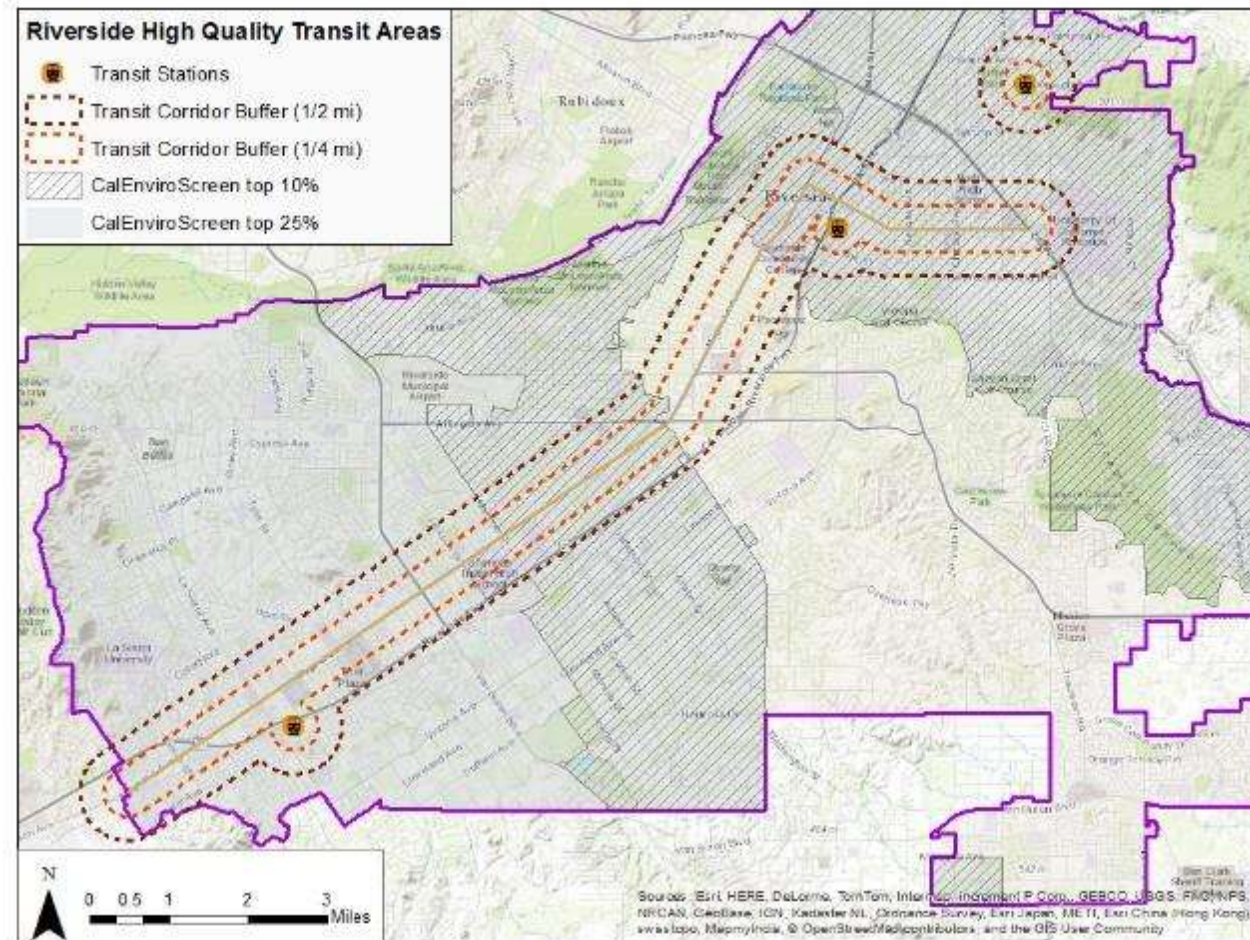




# SCENARIO 2: LOCAL LAND USE CHANGES – RIVERSIDE HQTAs



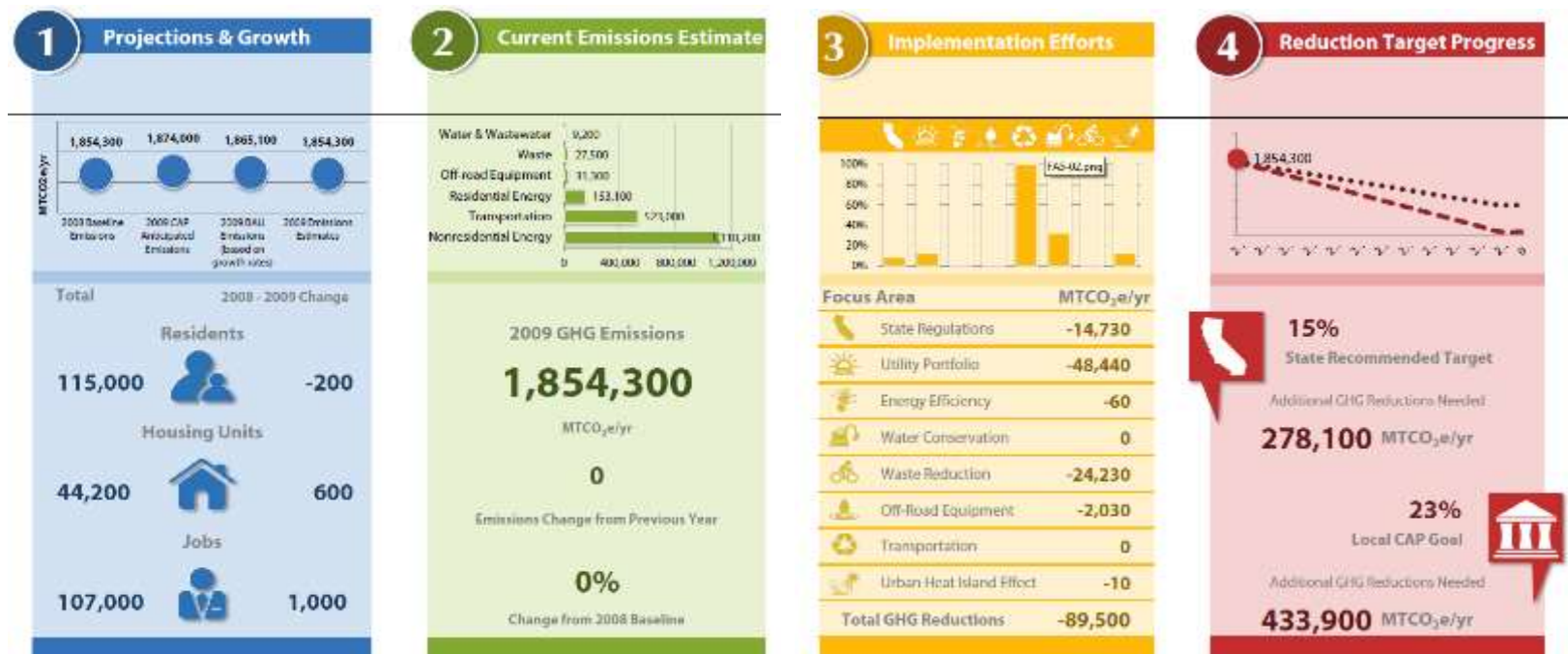
# SCENARIO 2: RIVERSIDE HQTAs & CAL ENVIROSCREEN FUNDING OVERLAY





# IMPLEMENTATION AND MONITORING

- Implementation, administration & funding
- Ongoing monitoring of activity data and measure progress



# RRG FINAL STEPS

## June-August 2015

Public Meetings on  
Draft RRG  
EPAP Promotional  
Strategy

## Fall 2015

Adoption Hearings  
Develop Tracking &  
Monitoring Tool



# RECOMMENDATIONS

**That the Utility Services/ Land Use/ Energy Development Committee:**

- 1. REVIEW AND RECOMMEND CITY COUNCIL APPROVAL** of the Riverside Restorative Growthprint – Economic Prosperity Action Plan and Climate Action Plan and (RRG-EPAP/CAP)



# Backup Slides



# Incentives and Benefits of a Climate Action Plan

- CEQA streamlining
- Priority funding
- Local control
- Co-benefits
  - Economic
  - Health
  - Environmental
- Marketing/business attraction



# Benefits of an Economic Prosperity Action Plan

## EXISTING BUSINESS INITIATIVES

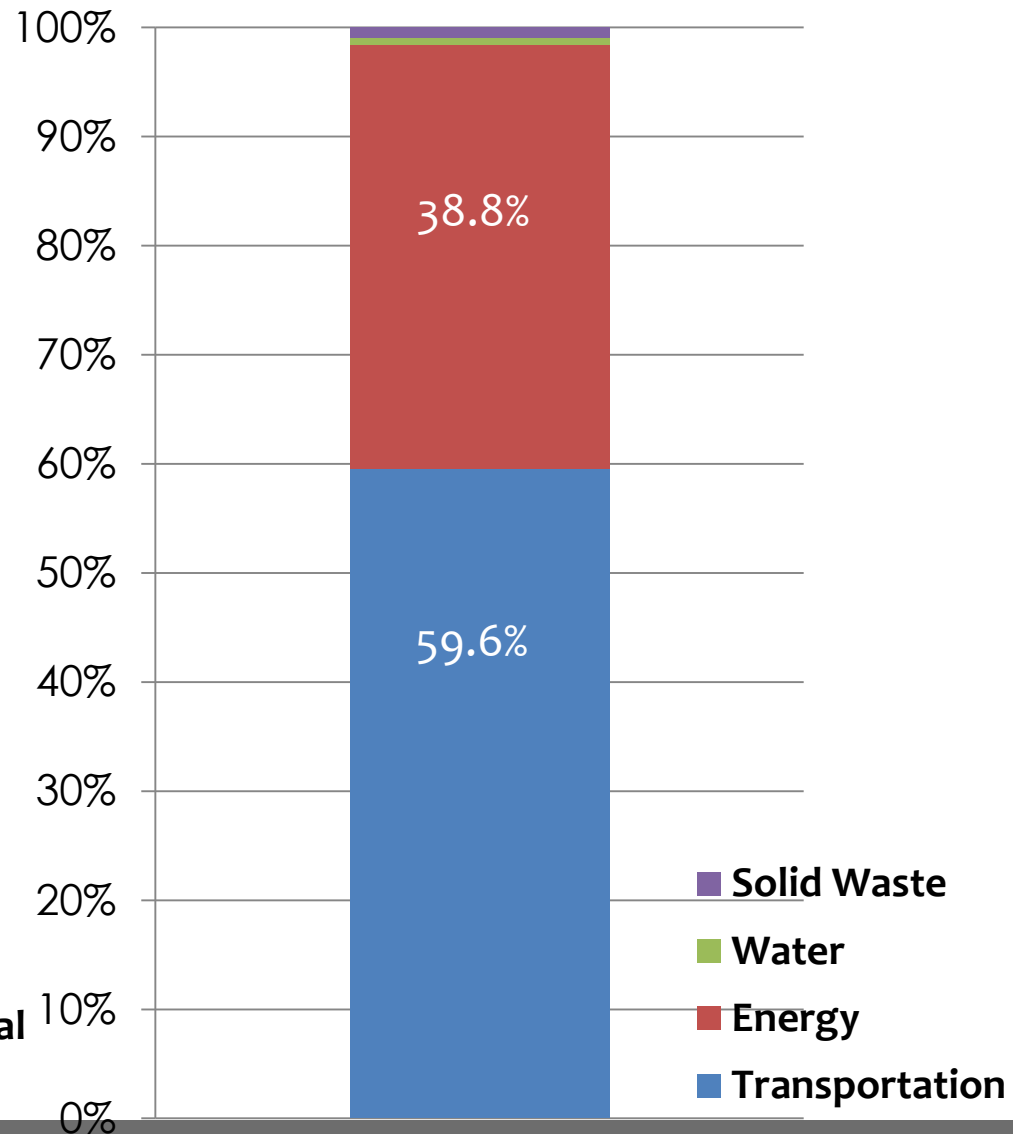
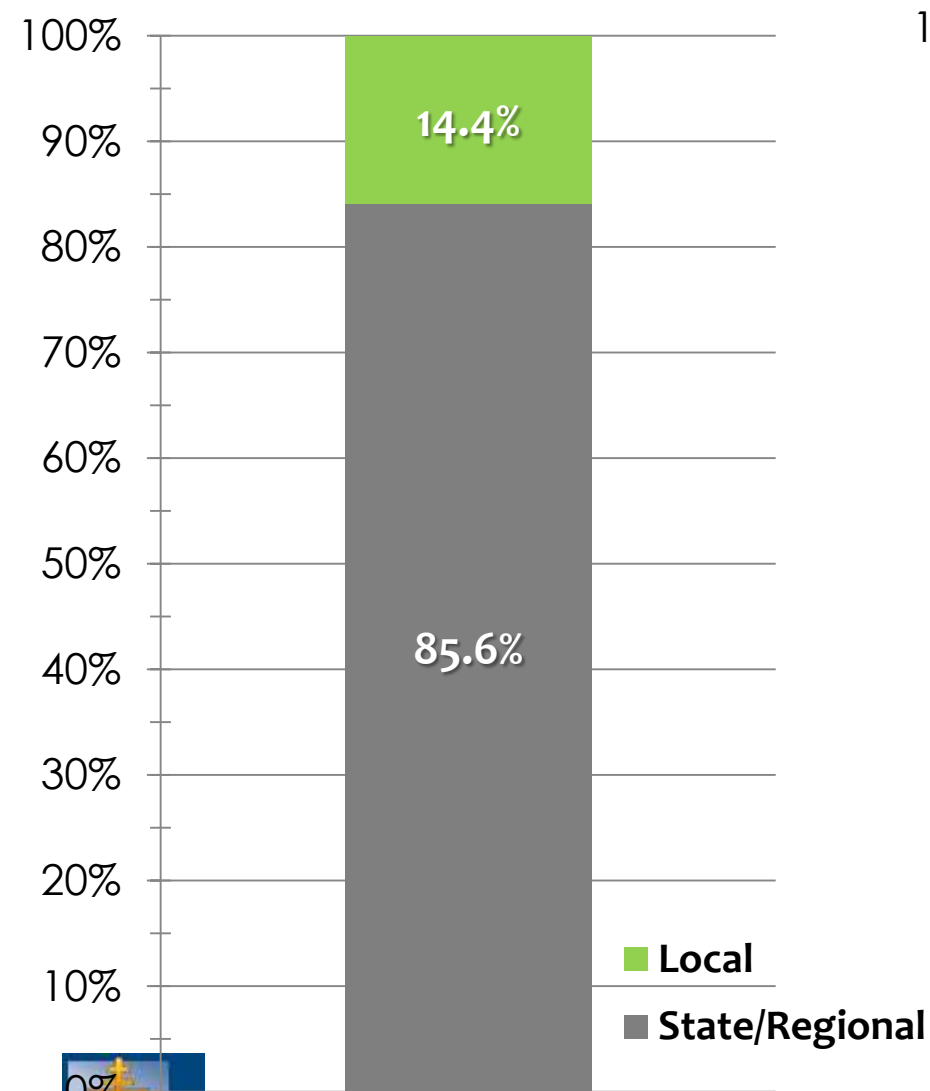
- Develop Green Business Program
- Highlight successes and showcase leadership (award presentations, etc.)
- Build supportive business networks and cultivate affiliations and connections between stakeholders
- Grow existing businesses and services offered leading to job growth

## NEW BUSINESS DEVELOPMENT

- Develop incentives to attract new businesses and create demand for relocation to Riverside
- Incubate and foster the growth of clean tech and sustainable businesses
- Create partnership opportunities between the business community and university programs



# 2035 Emissions Reductions



# Reduction Measures

## Transportation and Land Use

- State and Regional Measures
  - Pavley & Low Carbon Fuel Standard
  - Metrolink Expansion
  - Express Lanes
  - Congestion Pricing
  - Telecommuting
  - Goods Movement
  - Electric Vehicle Plan & Infrastructure





# Reduction Measures

## Transportation and Land Use

- Local Measures

- Bicycle Infrastructure
- Bicycle Parking
- End of Trip Facilities
- Transportation Demand Management
- Traffic Signal
- Density
- Mixed Use Development

- Pedestrian Only Areas
- Fixed Guideway Transit
- Neighborhood Electric Vehicle Programs
- Subsidized Transit
- Bike Share Program
- Car Share Program
- Urban



sid

# Reduction Measures

## Energy Efficiency and Renewables

- State and Regional Measures
  - Renewables Portfolio Standard
  - California Building Energy Efficiency Standards (Title 24)
  - HERO Residential Program
  - HERO Commercial Program
- Local Measures
  - Traffic and Street Lights
  - Shade Trees
  - Local Utility Programs - Electricity
  - Renewable Energy Production on Public Property
  - UC Riverside Carbon Neutral Program



# Reduction Measures

## Water, Waste and Green Infrastructure

- State and Regional Measures
  - Construction and Demolition Waste Diversion
- Local Measures
  - Water Conservation and Efficiency
  - Yard Waste Collection
  - Food Scrap and Paper Diversion

