

RIVERSIDE PUBLIC UTILITIES

Board Memorandum

BOARD OF PUBLIC UTILITIES

DATE: SEPTEMBER 4, 2015

**GENERAL MANAGERS REPORT
ITEM NO:** 19

SUBJECT: **MONTHLY POWER SUPPLY REPORT – July 2015**

Power Usage:

Wholesale Load (Vista): – 226,186 MWH (Chart 1)

Peak Demand: – 514 MW of which 439 MW came from RVSD available resources (Chart 2)

RVSD Energy Mix (Chart 1):

<u>Resource</u>	<u>MWH</u>
a) Nuclear	9,168
b) Coal	61,029
c) Large Hydroelectric	2,303
d) Natural Gas	10,829
e) Renewables	47,506
f) Other (BPA)	8,280
g) Inter SC Trades	39,400
h) Green Inter SC Trades	-
i) CAISO Purchases	47,671
Total:	226,186

Total Green Power Supply – **47,506 MWH** which yields 21.00% of the Total Wholesale Load Requirement

Resource Availability:

Nuclear: Palo Verde units 1, 2 and 3 operated at 94.79% capacity factor for the month.

Coal: IPP units 1 and 2 operated at 59.87% capacity factor for the month.

Large Hydro: Hoover, RVSD's capacity entitlement was 19 MW, with energy entitlement of 2,303 MWH.

Natural Gas: Clearwater's availability was 100% for the month.
RERC's (Units 1, 2, 3 and 4) availability was 98.99% for the month.
Springs's (Units 1, 2, 3 and 4) availability was 99.83% for the month.

Renewable: Salton Sea units operated at 98.8% capacity factor for the month.
Wintec operated at 55.21% capacity factor.
WKN operated at 54.27% capacity factor.
Camelot Solar operated at 42.30% capacity factor.
Transwind operated at 24.89% capacity factor.

The attached graphical comparisons represents RPU's July:

Chart 1: Total Energy Requirements/Resource Mix

Chart 2: Peak Hour Total Capacity

Chart 3: Retail Customer Load

Chart 4: Daily Peak Load and Temperature Comparisons

Chart 5: Monthly Peak Load and Temperature

Chart 1
Total Energy Requirements/Resource Mix - July

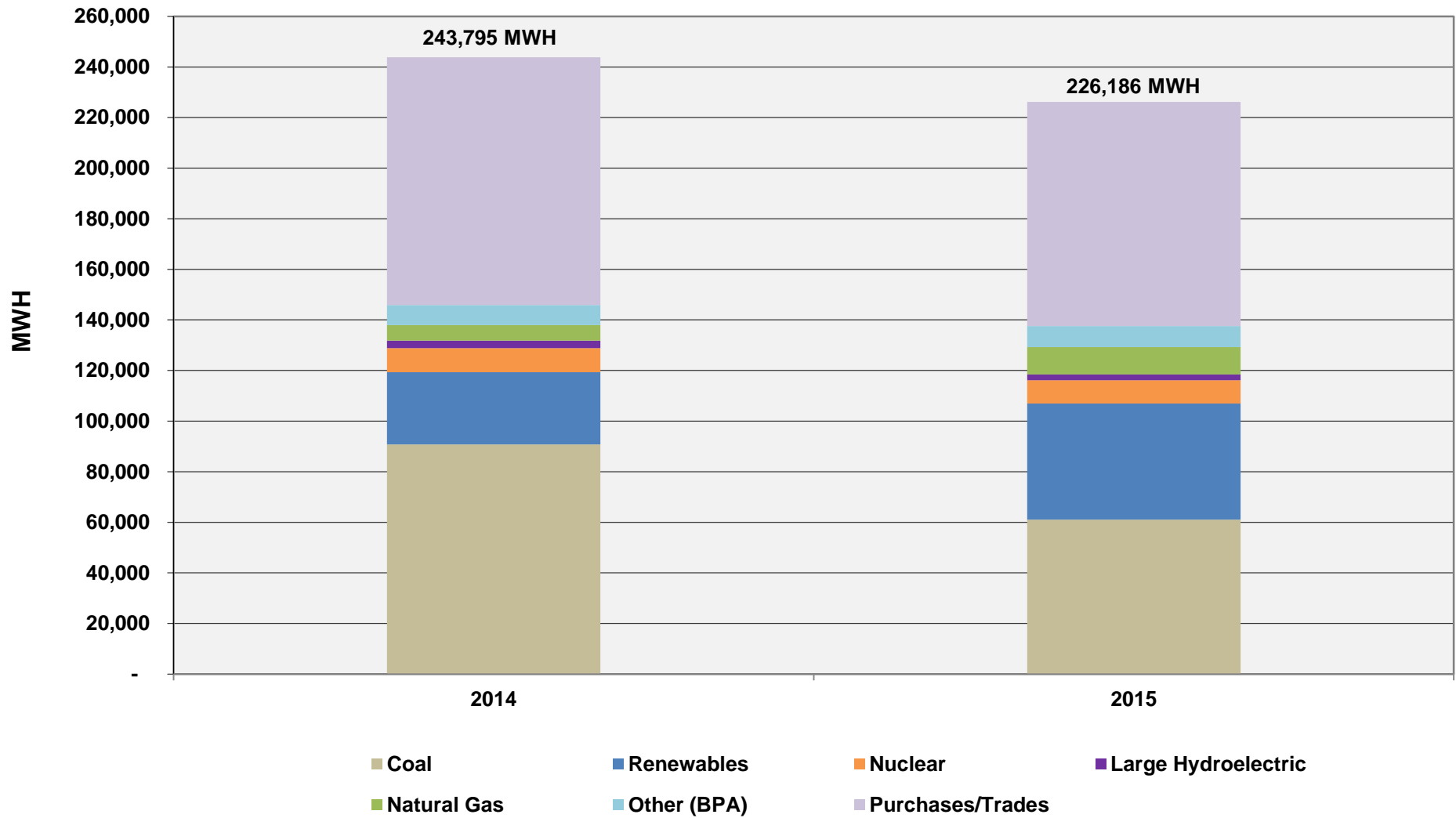


Chart 2
Peak Hour Total Capacity - July

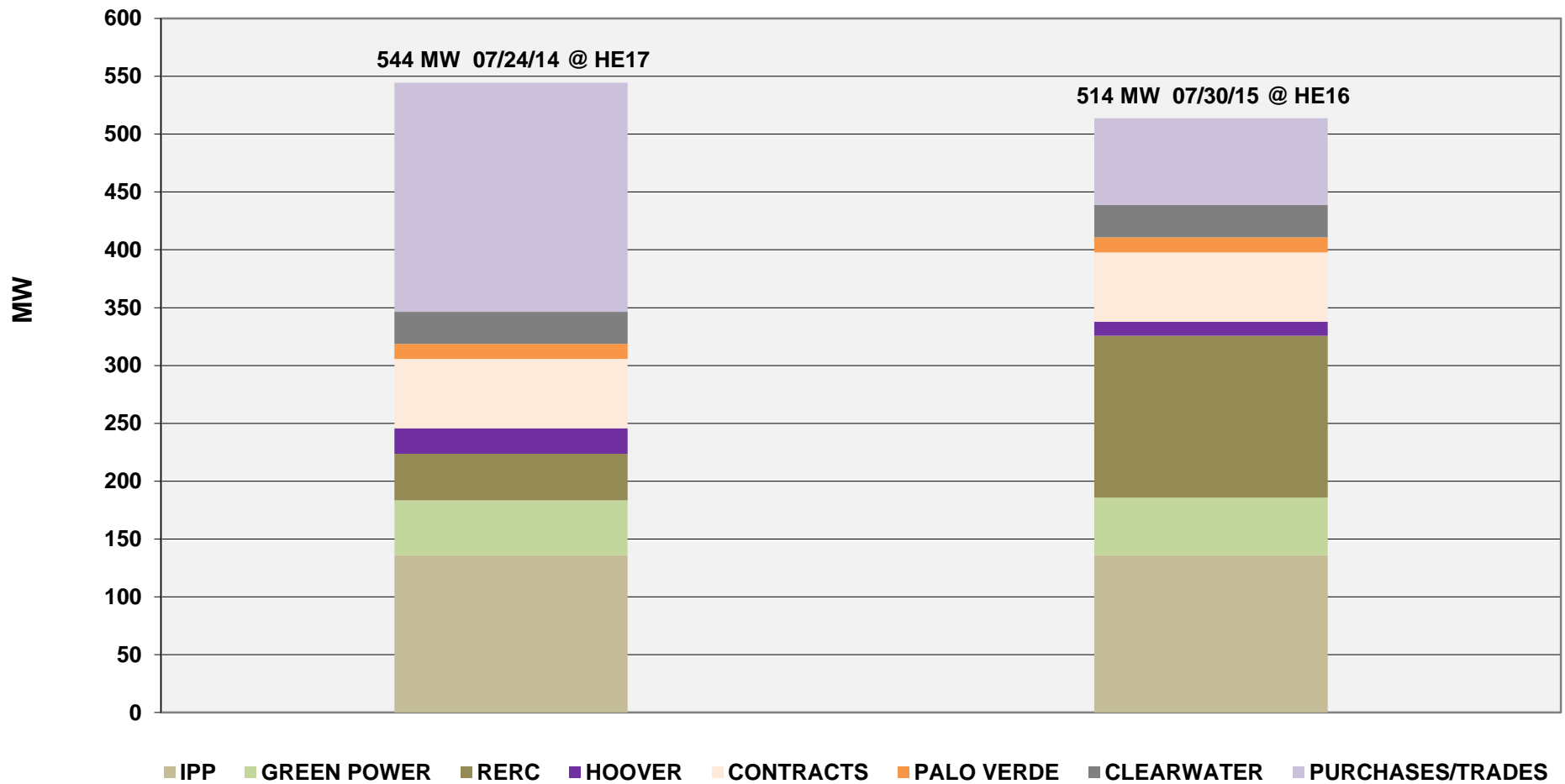


Chart 3
Retail Customer Load - July

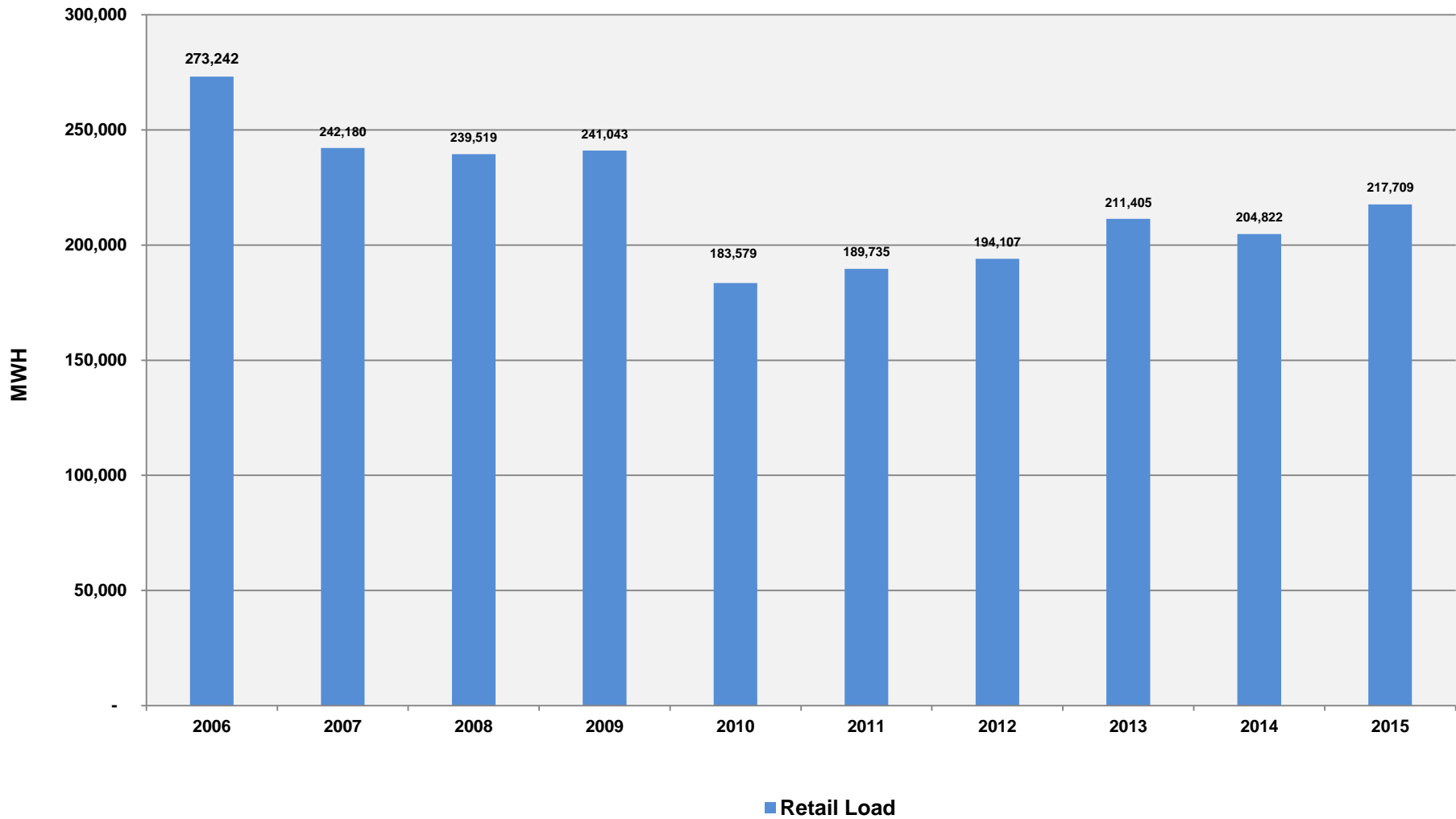


Chart 4
Daily Peak Load and Temperature Comparisons
July

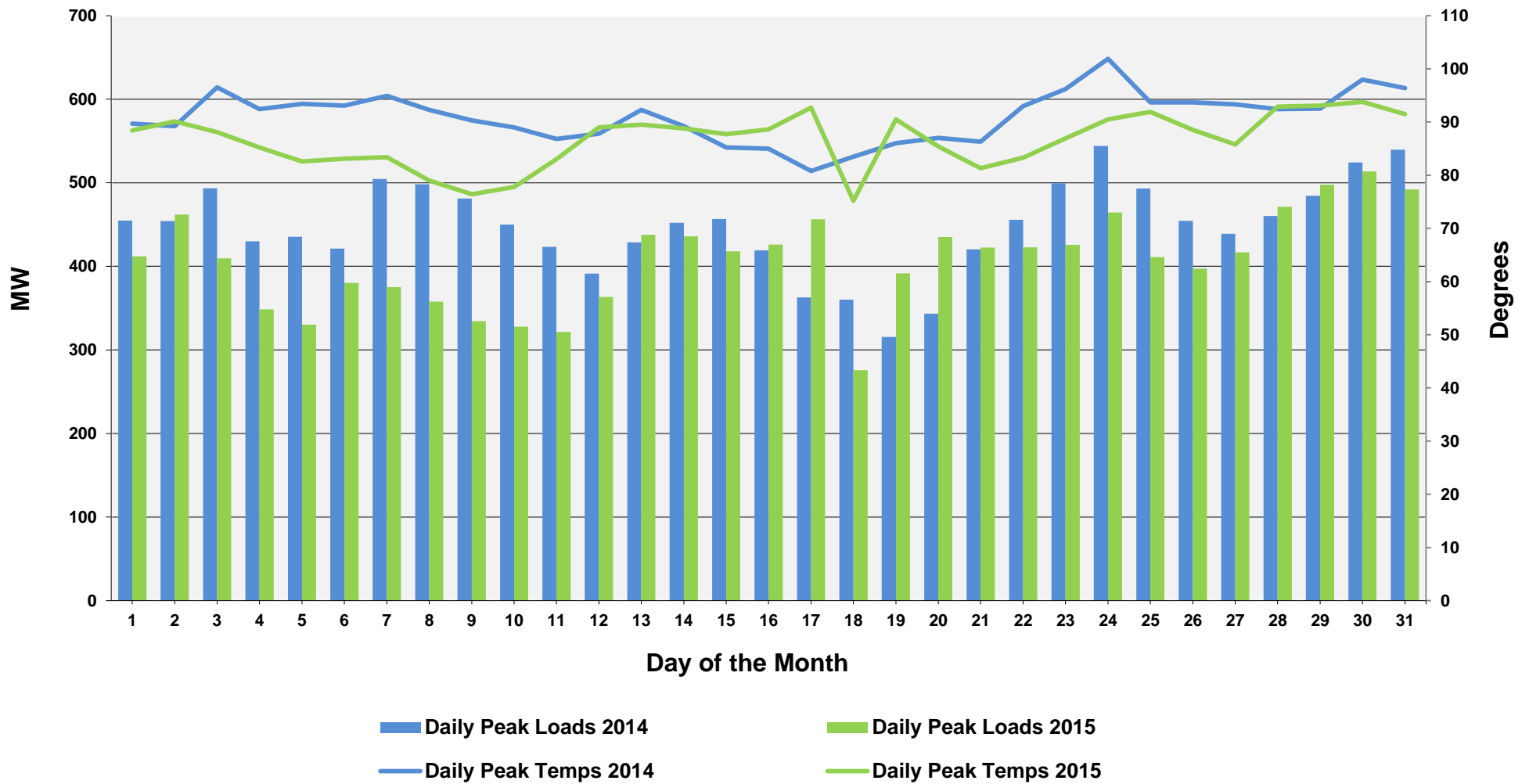


Chart 5
Monthly Peak Load & Temperature

