

RIVERSIDE PUBLIC UTILITIES

Board Memorandum

BOARD OF PUBLIC UTILITIES

DATE: NOVEMBER 6, 2015

**GENERAL MANAGERS REPORT
ITEM NO:** 19

SUBJECT: **MONTHLY POWER SUPPLY REPORT – September 2015**

Power Usage:

Wholesale Load (Vista): – 237,228 MWH (Chart 1)

Peak Demand: – 585 MW of which 411 MW came from RVSD available resources (Chart 2)

RVSD Energy Mix (Chart 1):

<u>Resource</u>	<u>MWH</u>
a) Nuclear	8,984
b) Coal	57,100
c) Large Hydroelectric	2,236
d) Natural Gas	9,011
e) Renewables	47,231
f) Other (BPA)	-
g) Inter SC Trades	27,555
h) Green Inter SC Trades	-
i) CAISO Purchases	85,110
Total:	237,228

Total Green Power Supply – **47,231 MWH** which yields 19.91% of the Total Wholesale Load Requirement

Resource Availability:

Nuclear: Palo Verde units 1, 2 and 3 operated at 95.98% capacity factor for the month.

Coal: IPP units 1 and 2 operated at 57.89% capacity factor for the month.

Large Hydro: Hoover, RVSD's capacity entitlement was 20 MW, with energy entitlement of 2,236 MWH.

Natural Gas: Clearwater's availability was 99.17% for the month.
RERC's (Units 1, 2, 3 and 4) availability was 98.85% for the month.
Springs's (Units 1, 2, 3 and 4) availability was 100.00% for the month.

Renewable: Salton Sea units operated at 96.65% capacity factor for the month.
Wintec operated at 35.17% capacity factor.
WKN operated at 35.01% capacity factor.
Tequesquite Solar operated at 63.52% capacity factor.
AP North Lake Solar operated at 30.75% capacity factor.
Camelot Solar operated at 36.98% capacity factor.
Transwind operated at 16.41% capacity factor.

The attached graphical comparisons represents RPU's September:

- Chart 1: Total Energy Requirements/Resource Mix
- Chart 2: Peak Hour Total Capacity
- Chart 3: Retail Customer Load
- Chart 4: Daily Peak Load and Temperature Comparisons
- Chart 5: Monthly Peak Load and Temperature

Chart 1
Total Energy Requirements/Resource Mix - September

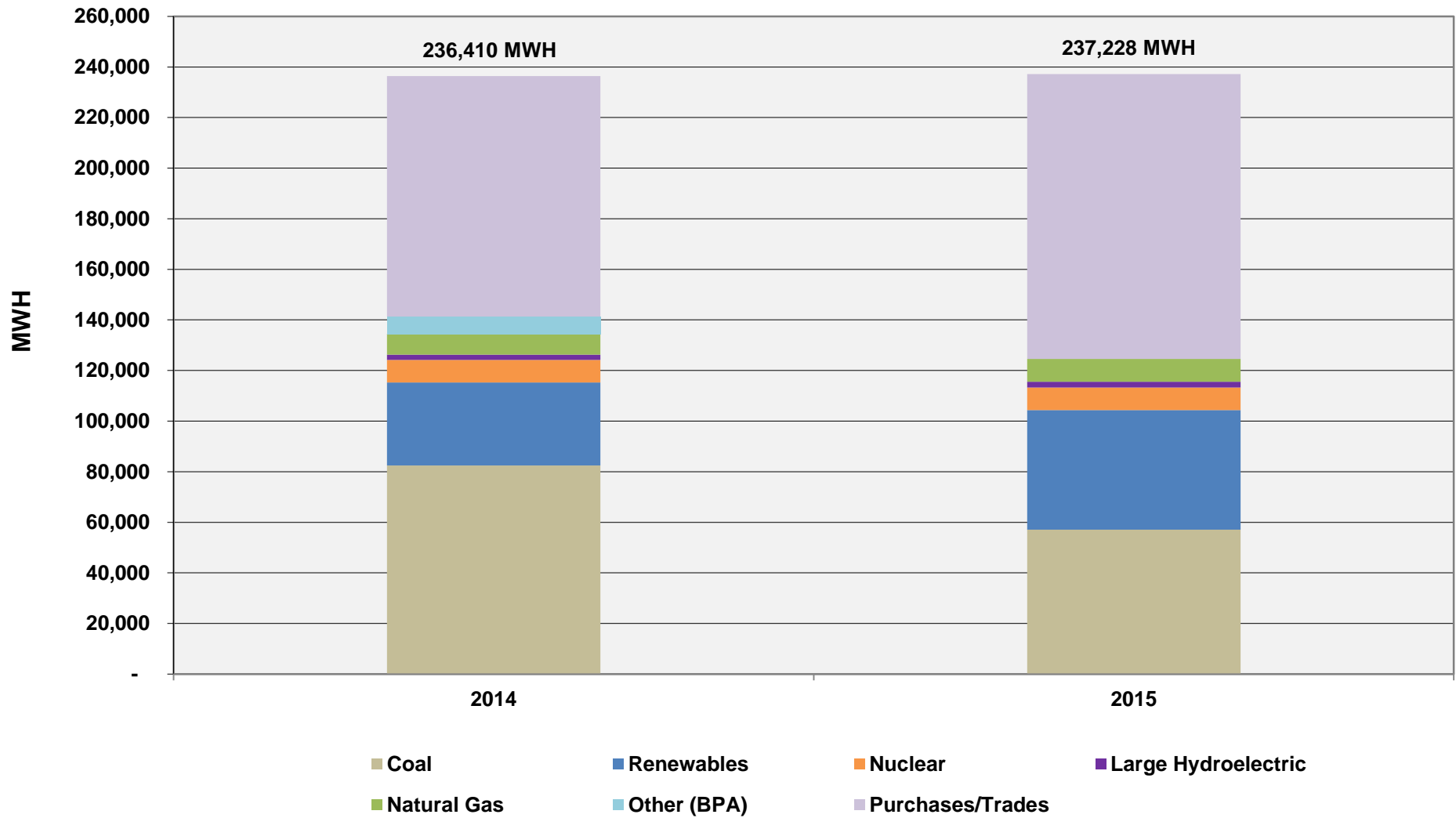


Chart 2
Peak Hour Total Capacity - September

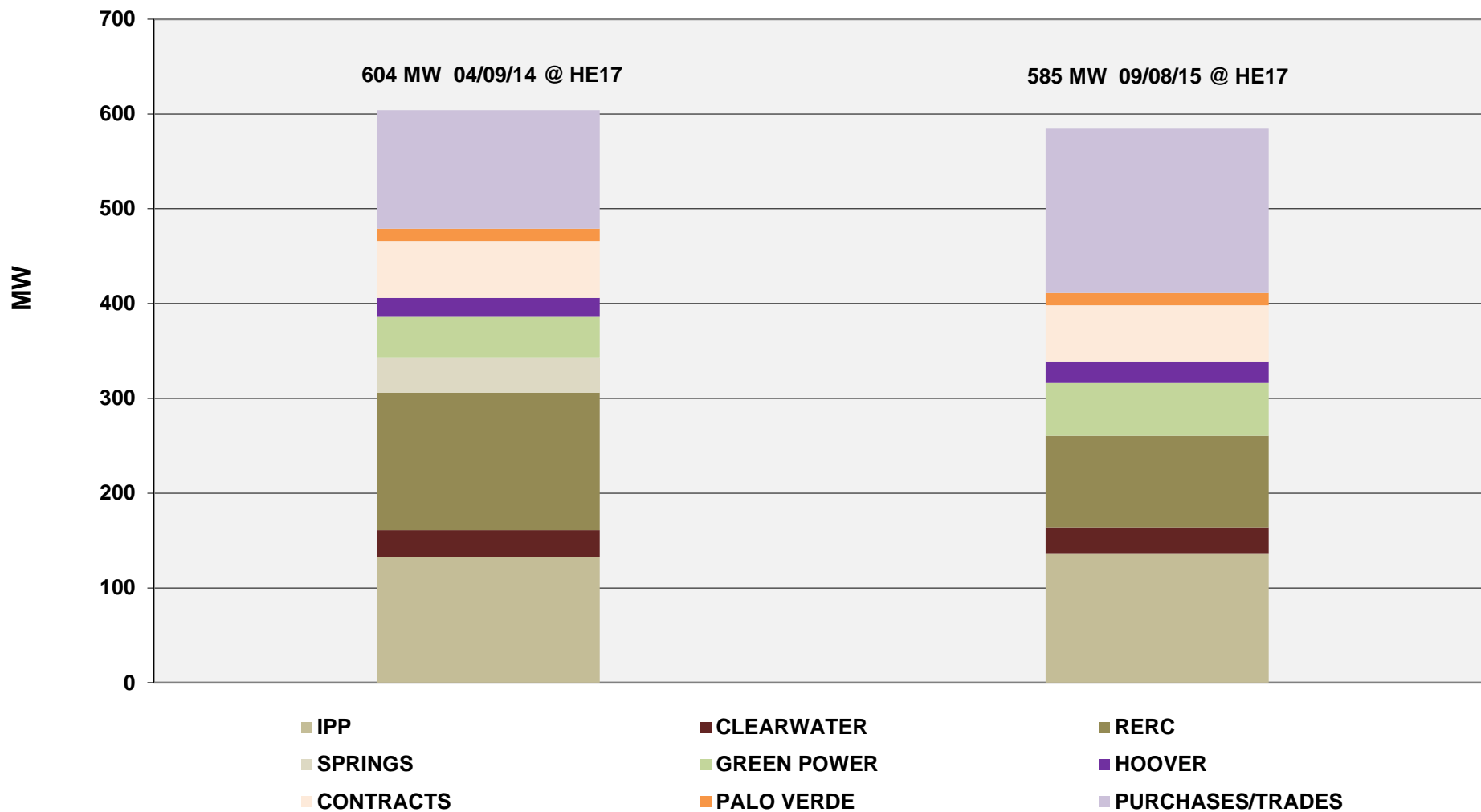


Chart 3
Retail Customer Load - September

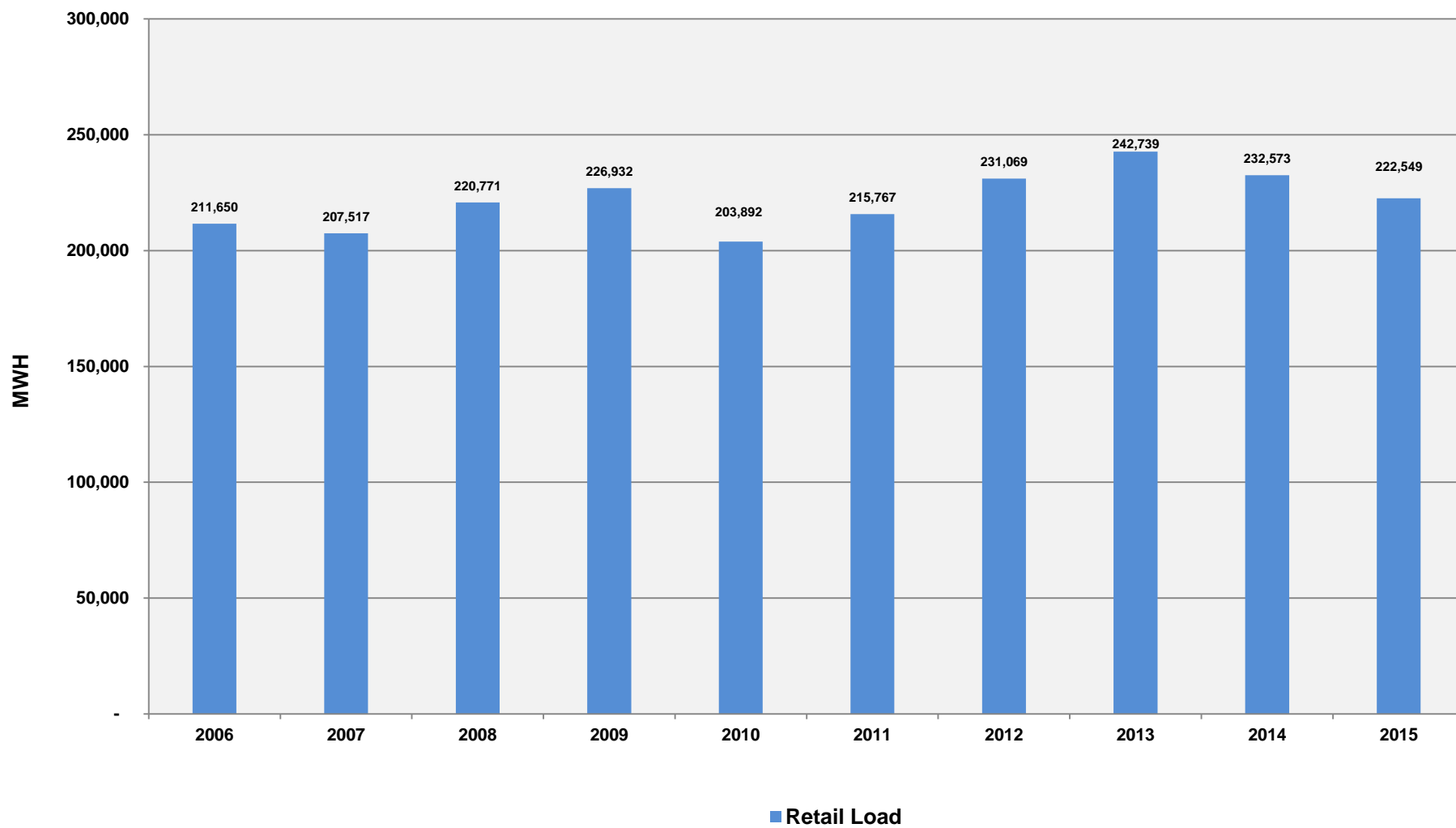


Chart 4
Daily Peak Load and Temperature Comparisons
September

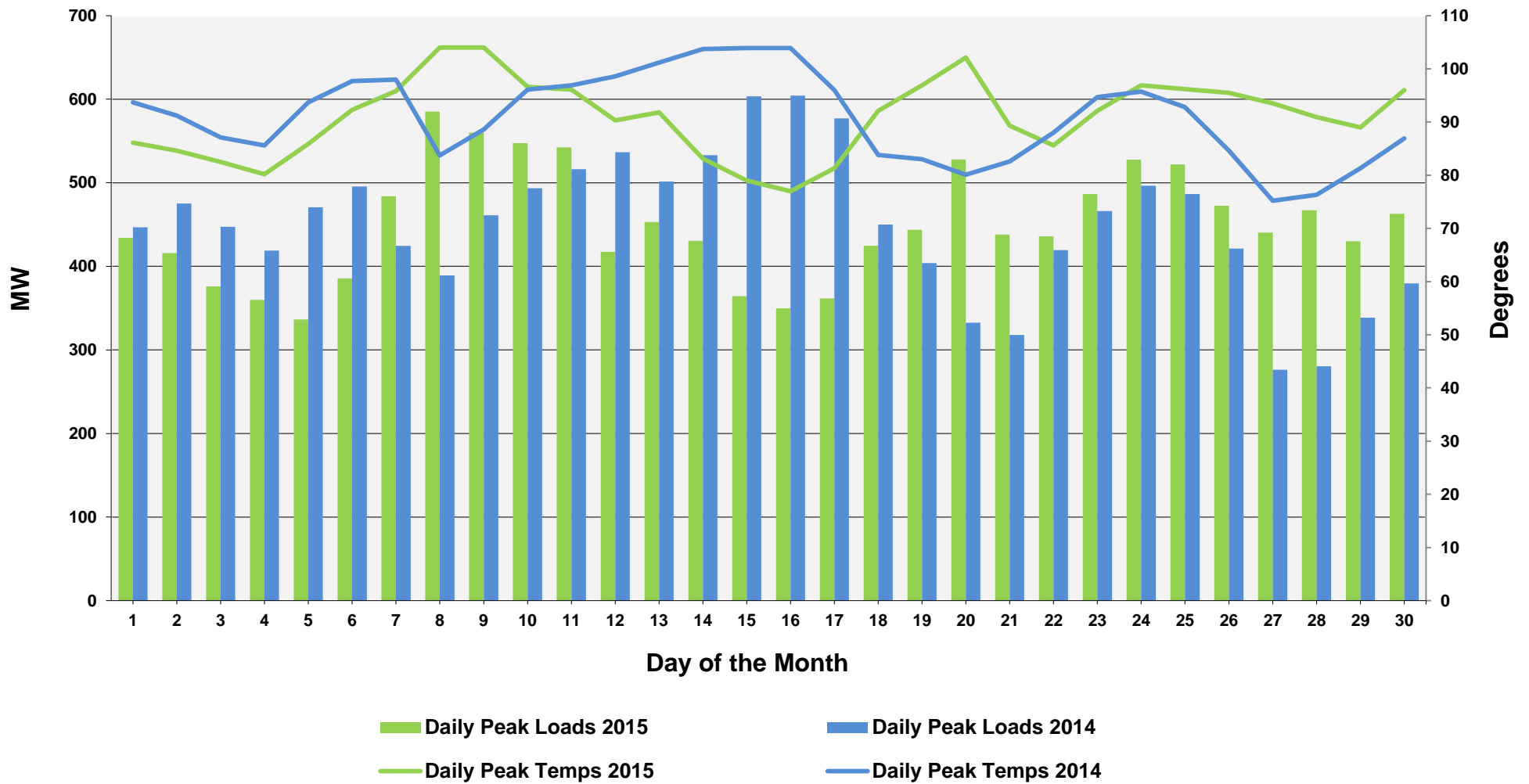


Chart 5
Monthly Peak Load & Temperature

