



RIVERSIDE PUBLIC UTILITIES

Board Memorandum

BOARD OF PUBLIC UTILITIES

DATE: DECEMBER 4, 2015

**GENERAL MANAGERS REPORT
ITEM NO: 12**

SUBJECT: MONTHLY POWER SUPPLY REPORT – October 2015

Power Usage:

Wholesale Load (Vista): – 208,666 MWH (Chart 1)

Peak Demand: – 499 MW of which 279 MW came from RVSD available resources (Chart 2)

RVSD Energy Mix (Chart 1):

<u>Resource</u>	<u>MWH</u>
a) Nuclear	7,278
b) Coal	53,947
c) Large Hydroelectric	2,022
d) Natural Gas	6,476
e) Renewables	44,258
f) Other (BPA)	-
g) Inter SC Trades	11,497
h) Green Inter SC Trades	-
i) CAISO Purchases	83,118
Total:	208,666

Total Green Power Supply – **44,258 MWH** which yields 21.21% of the Total Wholesale Load Requirement

Resource Availability:

Nuclear: Palo Verde units 1, 2 and 3 operated at 75.25% capacity factor for the month.

Coal: IPP units 1 and 2 operated at 52.93% capacity factor for the month.

Large Hydro: Hoover, RVSD's capacity entitlement was 20 MW, with energy entitlement of 2,022 MWH.

Natural Gas: Clearwater's availability was 100.00% for the month.
RERC's (Units 1, 2, 3 and 4) availability was 100.00% for the month.
Springs's (Units 1, 2, 3 and 4) availability was 100.00% for the month.

Renewable: Salton Sea units operated at 96.23% capacity factor for the month.
Wintec operated at 22.57% capacity factor.
WKN operated at 23.80% capacity factor.
Tequesquite Solar operated at 21.19% capacity factor.
AP North Lake Solar operated at 24.73% capacity factor.
Camelot Solar operated at 28.27% capacity factor.
Transwind operated at 9.77% capacity factor.

The attached graphical comparisons represents RPU's October:

Chart 1: Total Energy Requirements/Resource Mix

Chart 2: Peak Hour Total Capacity

Chart 3: Retail Customer Load

Chart 4: Daily Peak Load and Temperature Comparisons

Chart 5: Monthly Peak Load and Temperature

Chart 1
Total Energy Requirements/Resource Mix - October

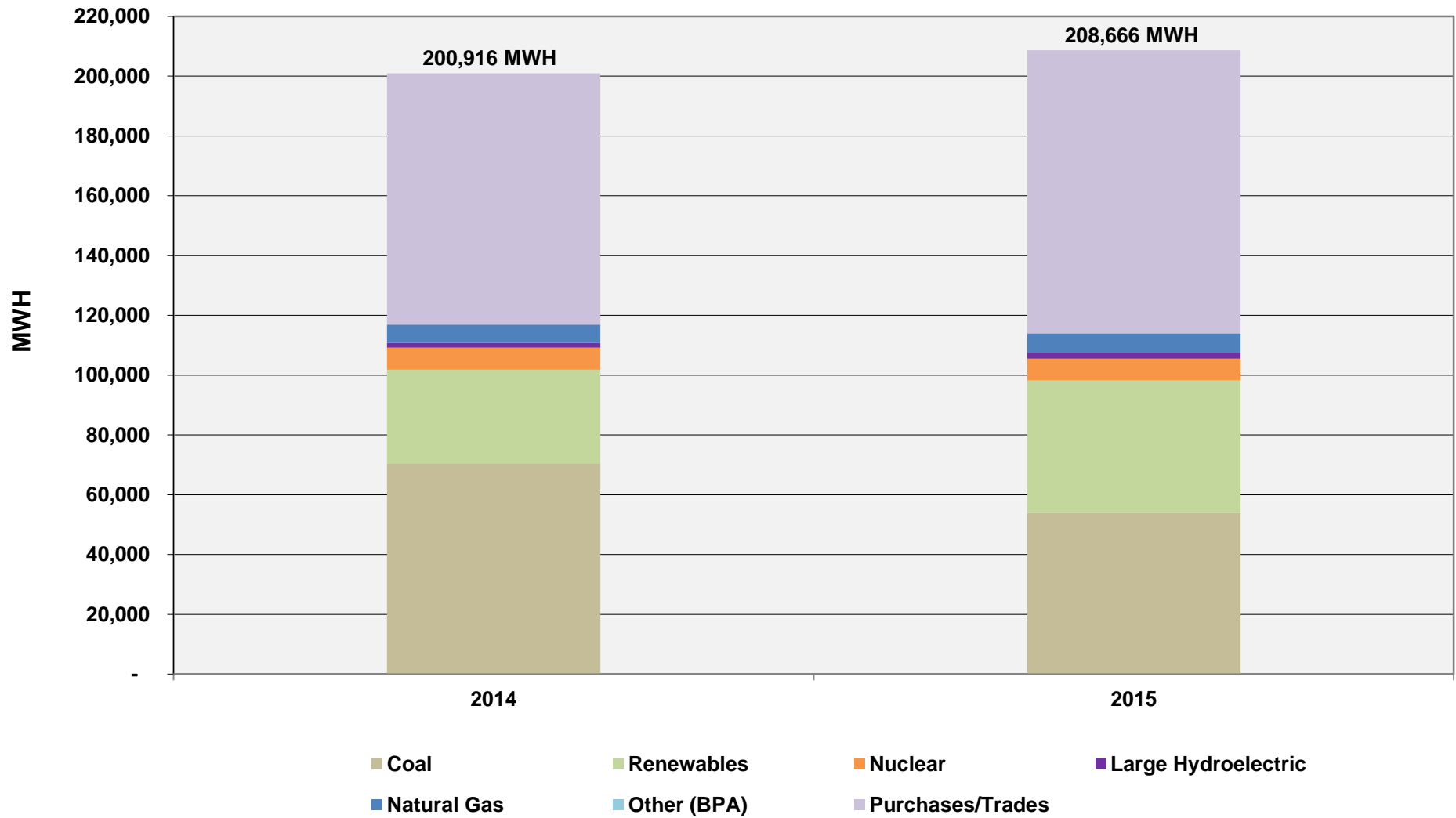


Chart 2
Peak Hour Total Capacity - October

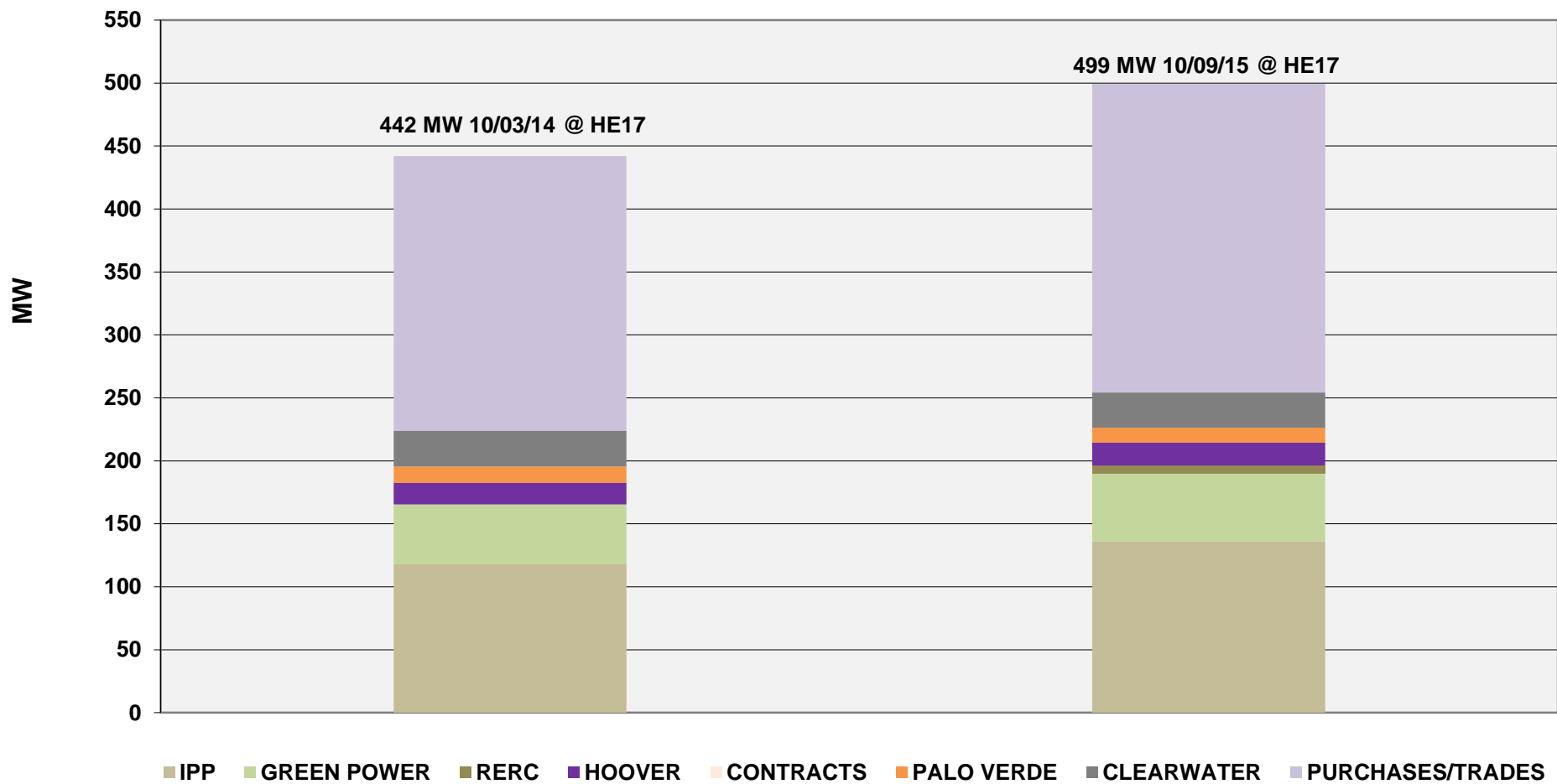


Chart 3
Retail Customer Load - October

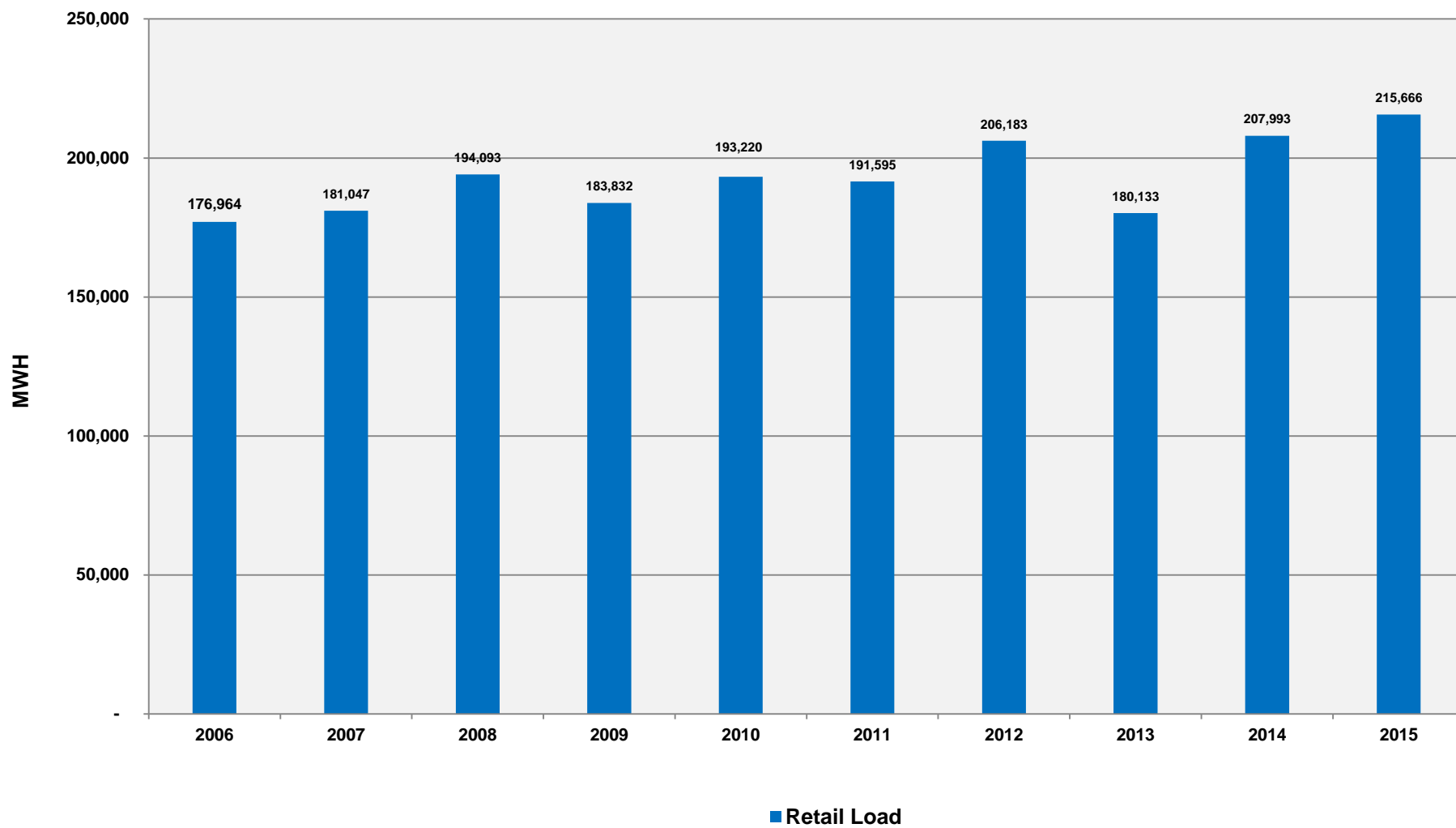


Chart 4

Daily Peak Load and Temperature Comparisons

October

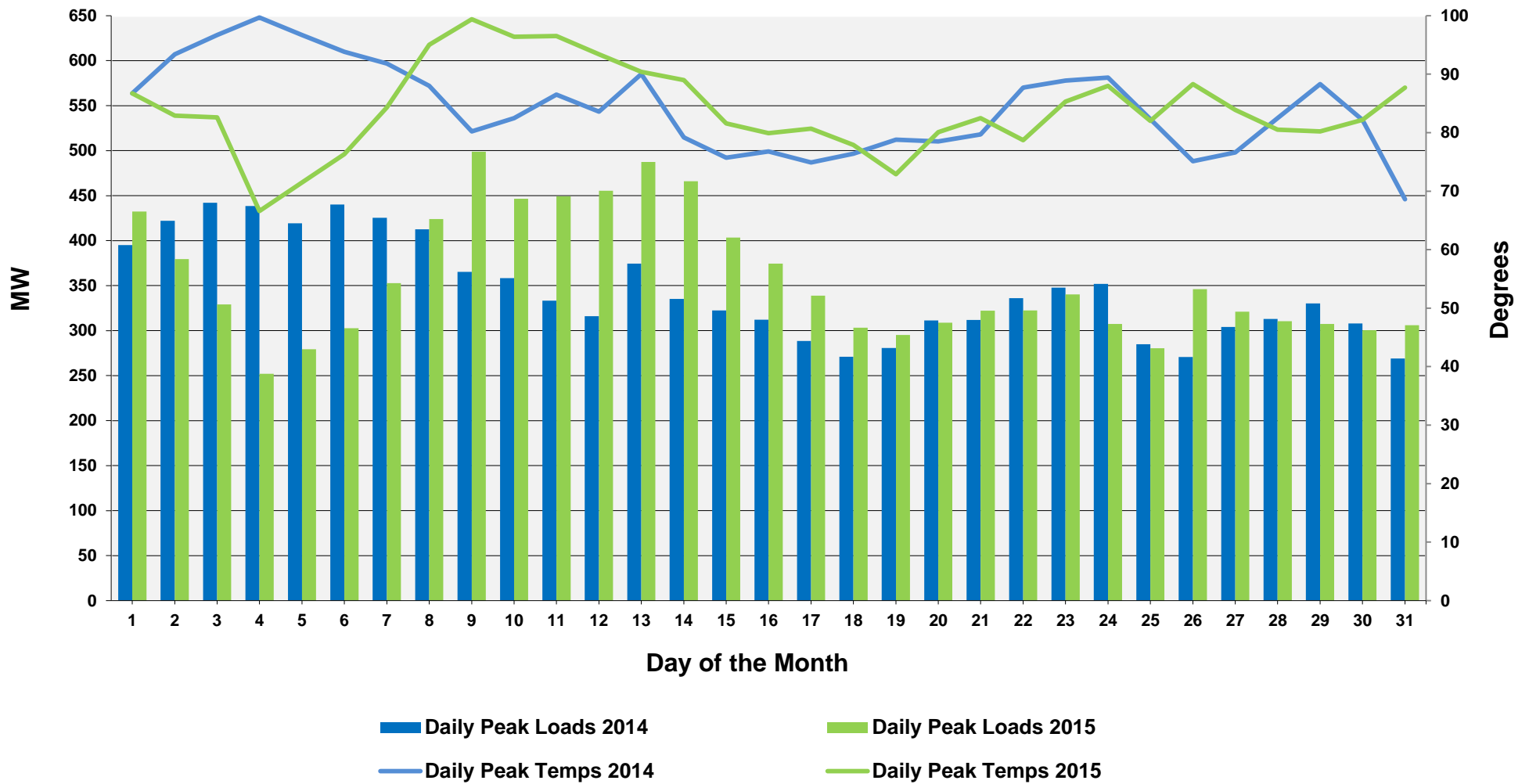


Chart 5
Monthly Peak Load & Temperature

