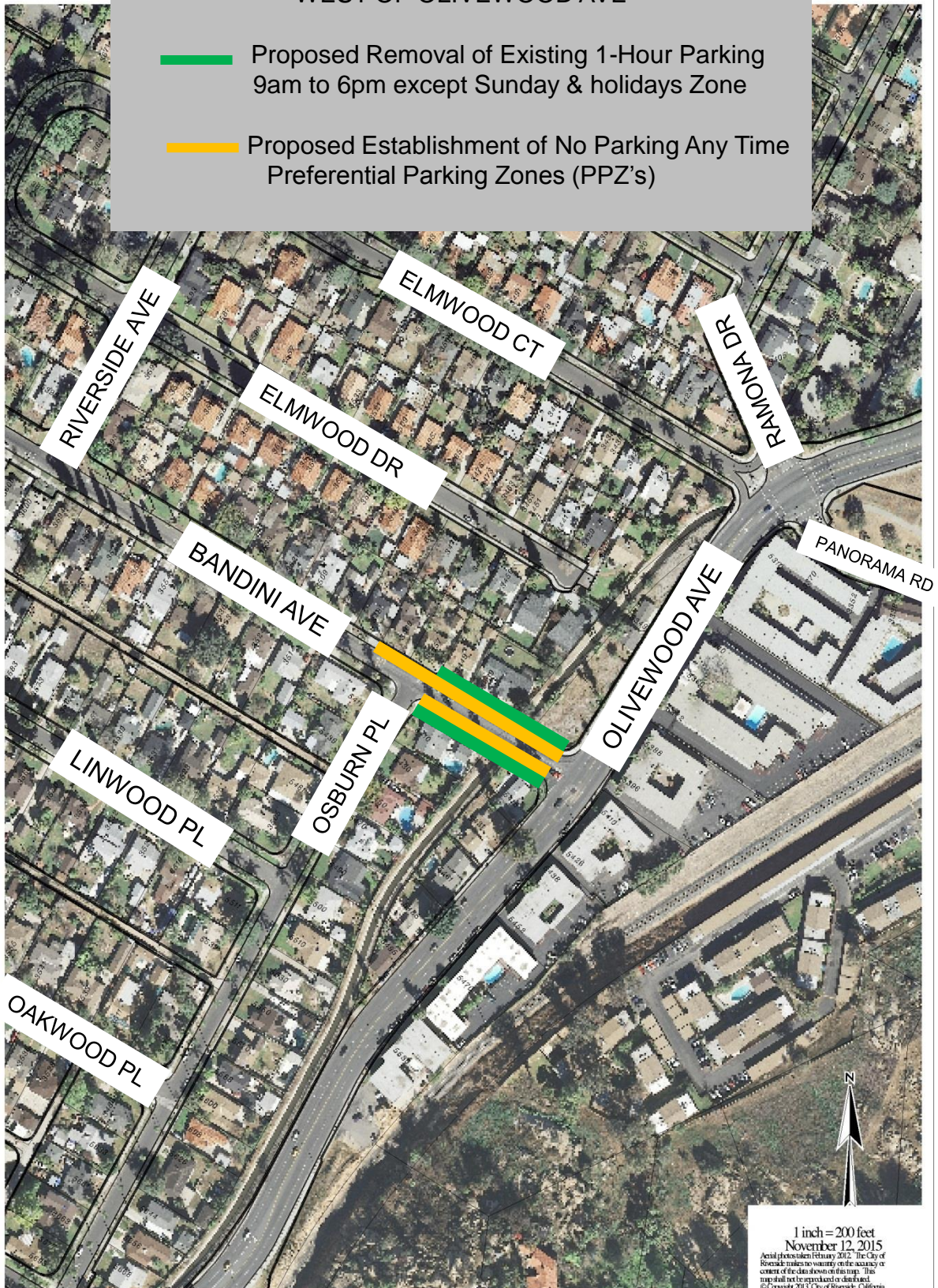


BANDINI AVENUE
WEST OF OLIVEWOOD AVE

- Proposed Removal of Existing 1-Hour Parking
9am to 6pm except Sunday & holidays Zone
- Proposed Establishment of No Parking Any Time
Preferential Parking Zones (PPZ's)



1 inch = 200 feet
November 12, 2015
Aerial photos taken February 2012. The City of
Riverside makes no warranty on the accuracy or
content of the data shown on this map. This
map shall not be reproduced or distributed.
© Copyright 2013, City of Riverside, California
Printed by: DRULLER