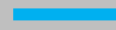


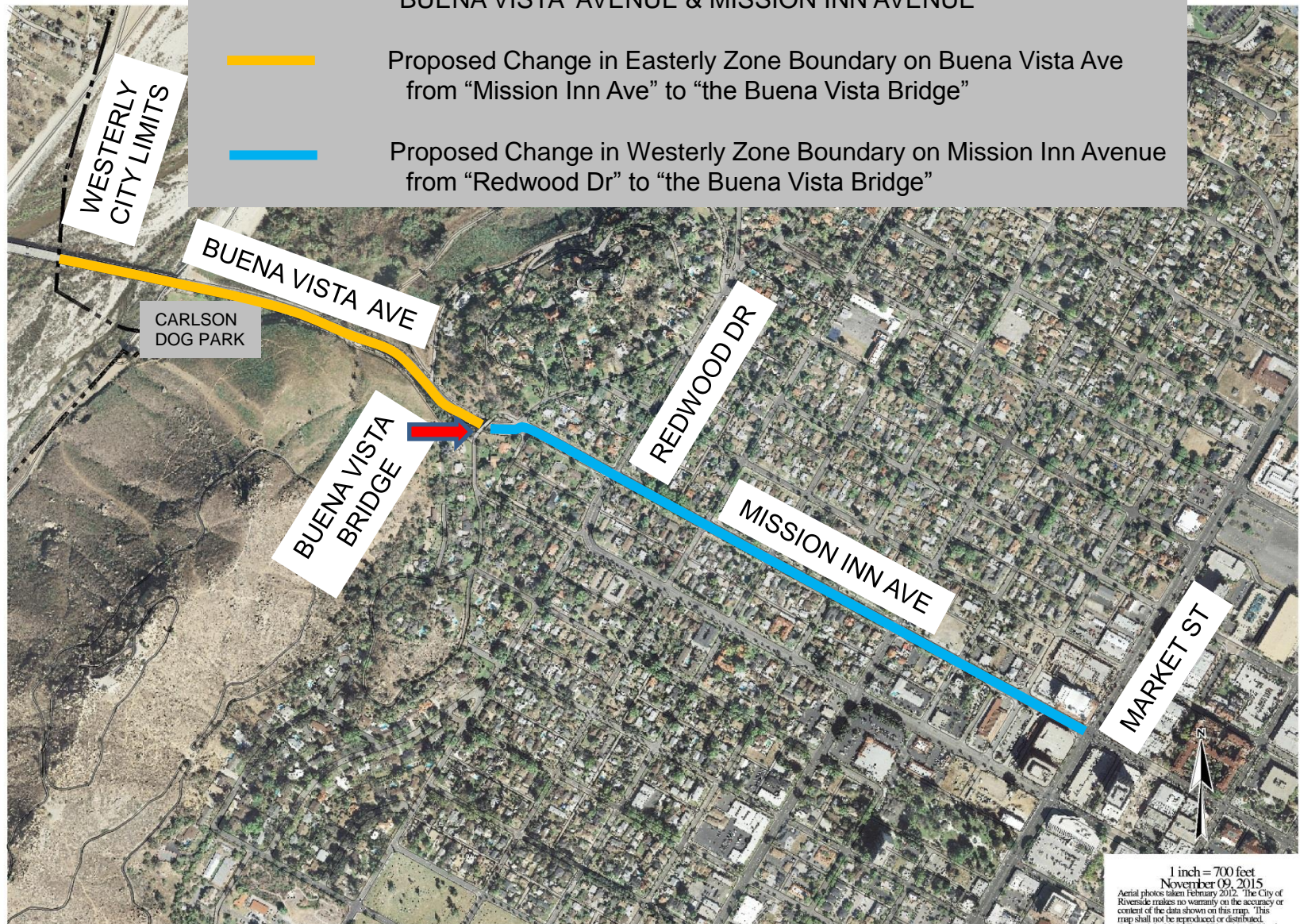
SPEED LIMIT ZONE ESTABLISHMENT & REVISIONS BUENA VISTA AVENUE & MISSION INN AVENUE



Proposed Change in Easterly Zone Boundary on Buena Vista Ave
from "Mission Inn Ave" to "the Buena Vista Bridge"



Proposed Change in Westerly Zone Boundary on Mission Inn Avenue
from "Redwood Dr" to "the Buena Vista Bridge"



1 inch = 700 feet
November 09, 2015
Aerial photos taken February 2012. The City of
Riverside makes no warranty on the accuracy or
content of the data shown on this map. This
map shall not be reproduced or distributed.
© Copyright 2013, City of Riverside, California
Printed by: DFWILLER