



Homewood Court – Establishment of Preferential Parking Zone (PPZ)

Public Works Department

Transportation
Committee Meeting
December 10, 2015

RiversideCa.gov

BACKGROUND

- On July 15, 2015, 80% of residents on Homewood Court petitioned the City to establish a Preferential Parking Zone (PPZ)
- Residents indicate overflow parking from nearby Riverside City College (RCC):
 - Limits on-street parking for residents
 - Impacts residential driveway access
 - Makes it difficult to traverse the narrow street



RiversideCa.gov 2

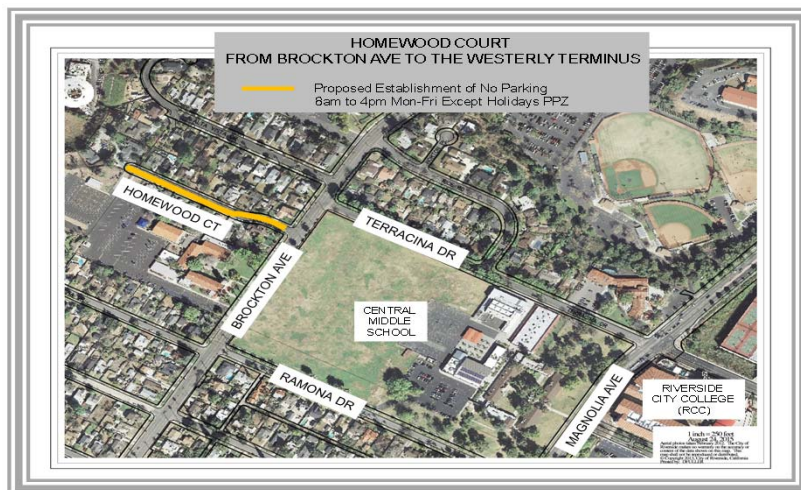
PROPOSED RESTRICTION

- Proposed PPZ restriction:
 - No Parking between the hours of 8:00 a.m. to 4:00 p.m. Monday through Friday except holidays, with Preferential Permit Parking for residents
 - Addresses overflow parking concerns during peak school hours
 - Assists in facilitating driveway access and travel on the 30 foot wide roadway



RiversideCa.gov 3

AERIAL LOCATION MAP



RiversideCa.gov 4

BOARD RECOMMENDATION

- On October 7, 2015, the Transportation Board reviewed the Homewood Court PPZ proposal
- The Board unanimously recommended establishment of the PPZ



RiversideCa.gov 5

PUBLIC WORKS RECOMMENDATION

That the Committee recommend the City Council approve the establishment of a "No Parking 8:00 a.m. to 4:00 p.m. Monday through Friday except holidays" PPZ on both sides of Homewood Court from Brockton Avenue to the westerly terminus



RiversideCa.gov 6