



## Abernathy Drive – Establishment of Preferential Parking Zone (PPZ)

Public Works Department

Transportation  
Committee Meeting  
December 10, 2015

RiversideCa.gov

## BACKGROUND

- On September 10, 2015, 86% of residents on Abernathy Dr. from Fair Isle Dr. (North) to (South) petitioned the City to establish a Preferential Parking Zone (PPZ)
- Residents indicate evening overflow parking from nearby Sycamore Highlands Park:
  - Limits on-street parking for residents
  - Creates late night noise concerns



RiversideCa.gov 2

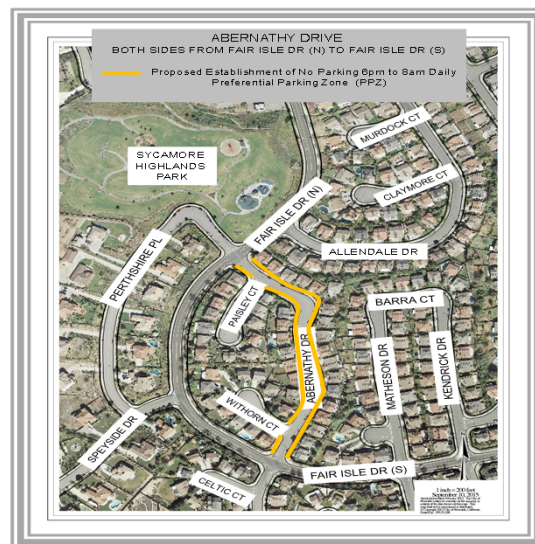
## PROPOSED RESTRICTION

- Proposed PPZ restriction:
  - No Parking from 6:00 p.m. to 8:00 a.m. Daily, with Preferential Permit Parking for residents
  - Addresses evening and overnight overflow parking concerns
  - Also discourages use of Sycamore Highlands Park beyond designated park hours
  - Similar PPZ is in place on nearby Paisley Court



RiversideCa.gov 3

## AERIAL LOCATION MAP



RiversideCa.gov 4

## BOARD RECOMMENDATION

- On October 7, 2015, the Transportation Board reviewed the Abernathy Drive PPZ proposal
- The Board unanimously recommended establishment of PPZ



## PUBLIC WORKS RECOMMENDATION

That the Committee recommend the City Council approve the establishment of a No Parking 6:00 p.m. to 8:00 a.m. Daily PPZ on both sides of Abernathy Dr. from Fair Isle Dr. (North) to (South)

