



RIVERSIDE PUBLIC UTILITIES

Board Memorandum

BOARD OF PUBLIC UTILITIES

DATE: FEBRUARY 5, 2015

**GENERAL MANAGERS REPORT
ITEM NO: 13**

SUBJECT: MONTHLY POWER SUPPLY REPORT – December 2015

Power Usage:

Wholesale Load (Vista): – 172,433 MWH (Chart 1)

Peak Demand: – 298 MW of which 248 MW came from RVSD available resources (Chart 2)

RVSD Energy Mix (Chart 1):

<u>Resource</u>	<u>MWH</u>
a) Nuclear	9,582
b) Coal	48,769
c) Large Hydroelectric	2,020
d) Natural Gas	1,594
e) Renewables	39,331
f) Other (BPA)	-
g) Inter SC Trades	(18,100)
h) Green Inter SC Trades	-
i) CAISO Purchases	89,433
Total:	172,433

Total Green Power Supply – **39,331 MWH** which yields 22.81% of the Total Wholesale Load Requirement

Resource Availability:

Nuclear: Palo Verde units 1, 2 and 3 operated at 99.07% capacity factor for the month.

Coal: IPP units 1 and 2 operated at 47.85% capacity factor for the month.

Large Hydro: Hoover, RVSD's capacity entitlement was 20 MW, with energy entitlement of 2,020 MWH.

Natural Gas: Clearwater's availability was 100.00% for the month.
RERC's (Units 1, 2, 3 and 4) availability was 100.00% for the month.
Springs's (Units 1, 2, 3 and 4) availability was 100.00% for the month.

Renewable: Salton Sea units operated at 88.60% capacity factor for the month.
Wintec operated at 21.30% capacity factor.
WKN operated at 19.59% capacity factor.
Tequesquite Solar operated at 15.77% capacity factor.
AP North Lake Solar operated at 17.73% capacity factor.
Camelot Solar operated at 17.74% capacity factor.
Transwind operated at 9.45% capacity factor.

The attached graphical comparisons represents RPU's December:

Chart 1: Total Energy Requirements/Resource Mix

Chart 2: Peak Hour Total Capacity

Chart 3: Retail Customer Load

Chart 4: Daily Peak Load and Temperature Comparisons

Chart 5: Monthly Peak Load and Temperature

Chart 1
Total Energy Requirements/Resource Mix - December

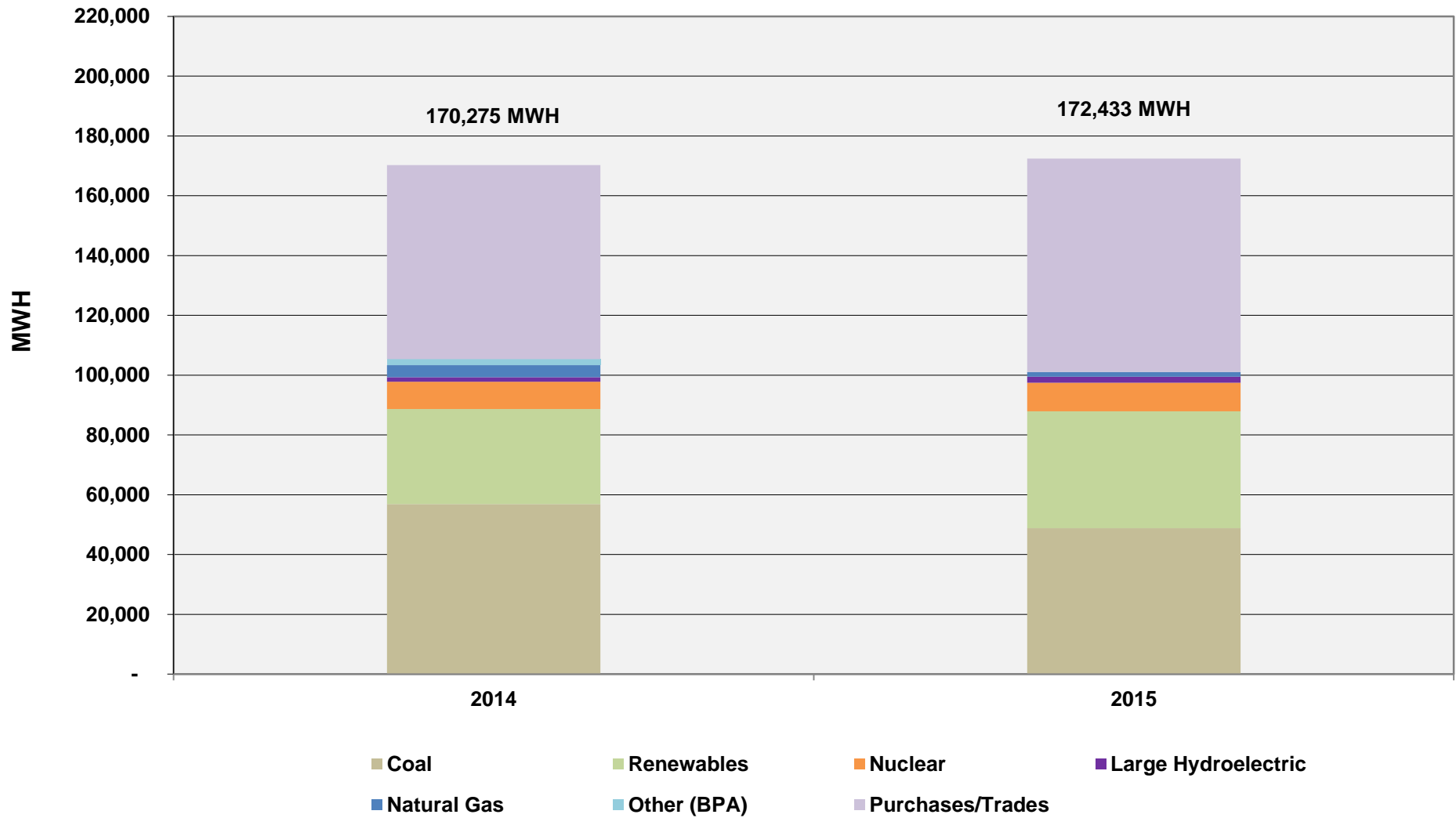


Chart 2
Peak Hour Total Capacity - December

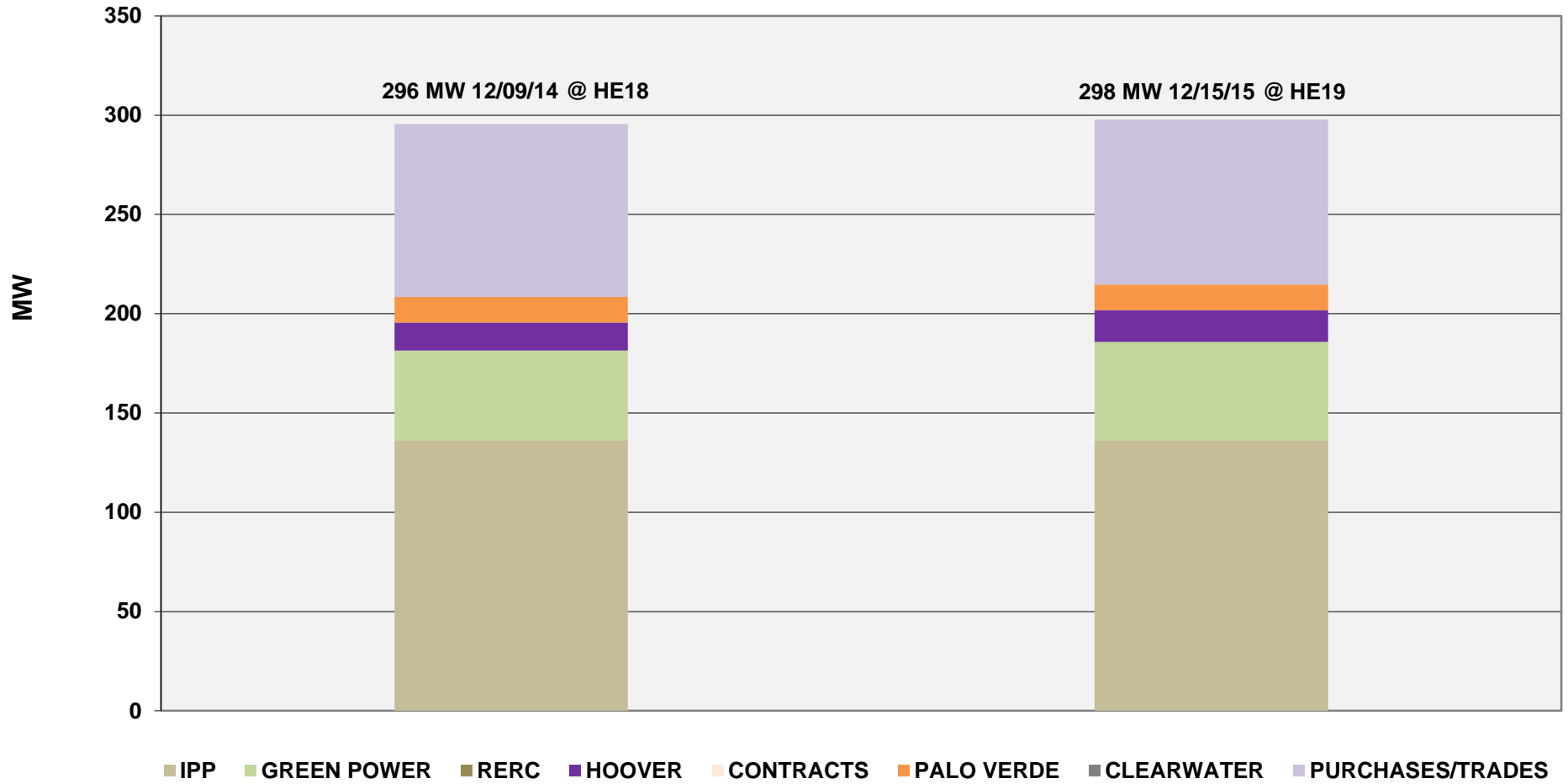


Chart 3
Retail Customer Load - December

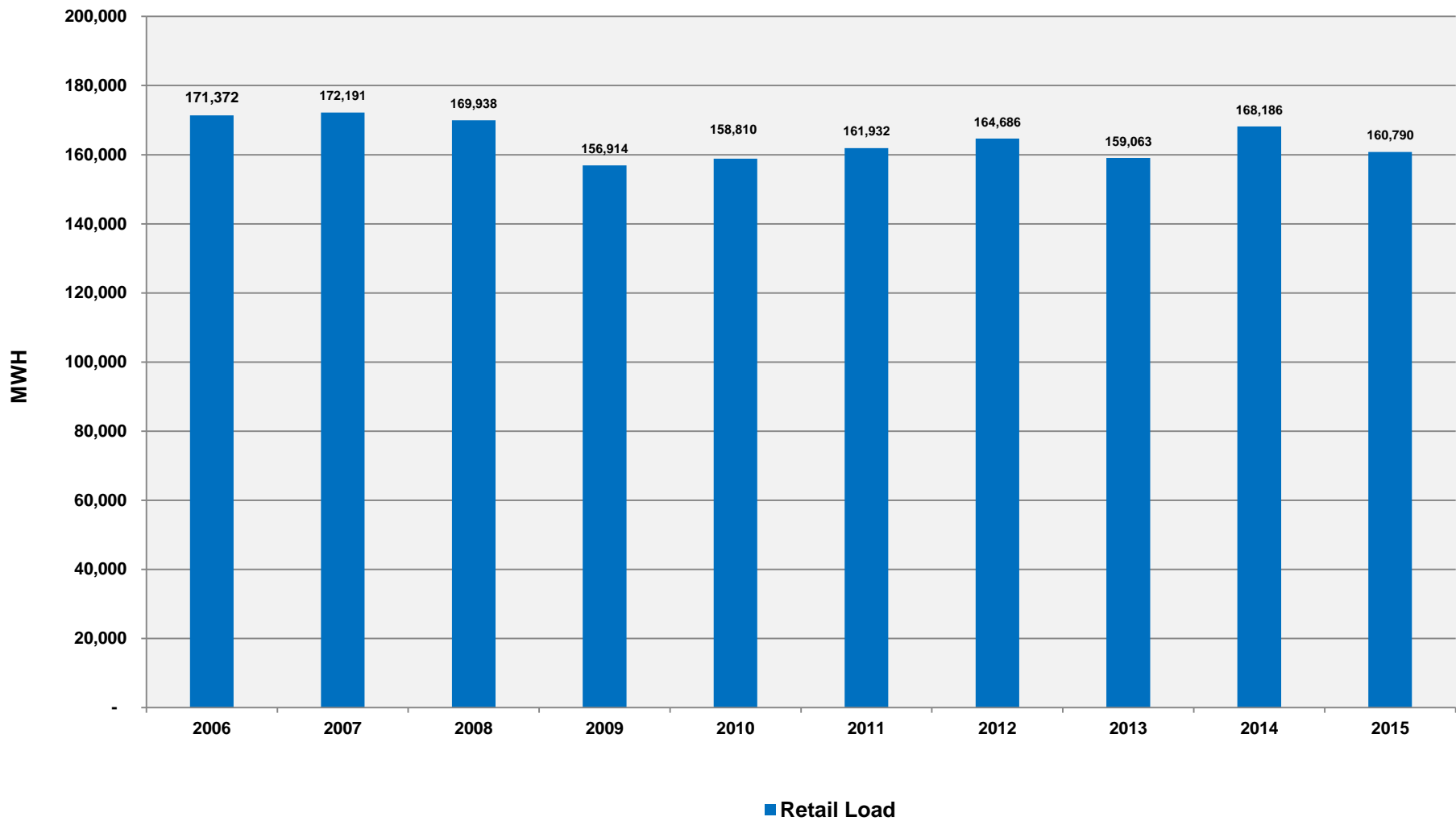


Chart 4
Daily Peak Load and Temperature Comparisons
December

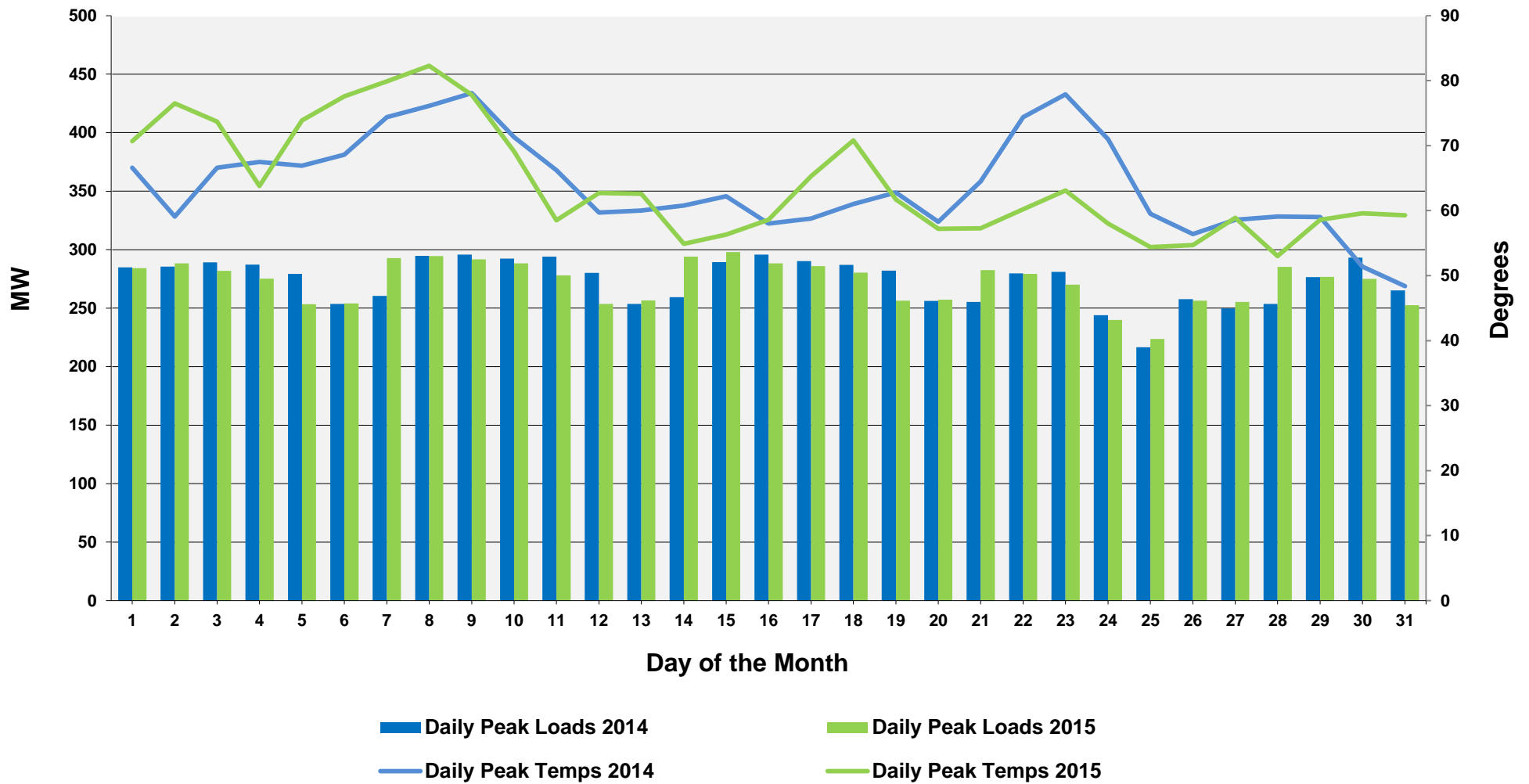


Chart 5
Monthly Peak Load & Temperature

