



Planning Case

P16-0011 (Conditional Use Permit)

Community & Economic
Development Department

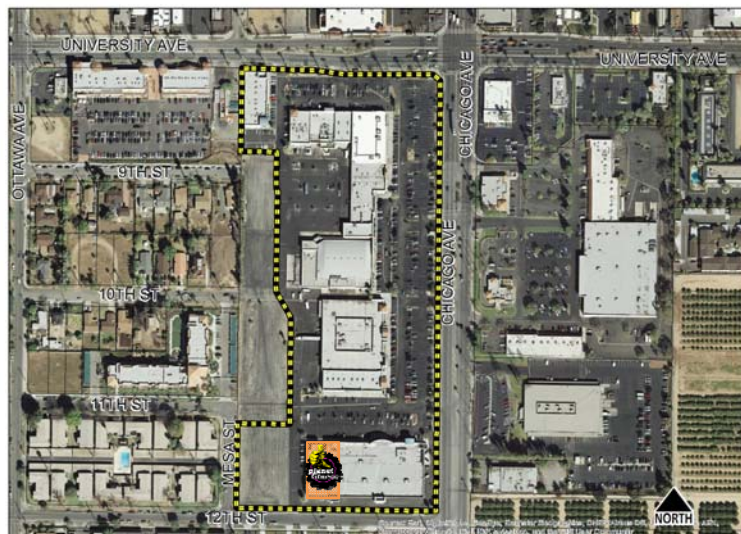
City Planning Commission

Item # 6

May 19, 2016

RiversideCa.gov

2012 AERIAL PHOTO



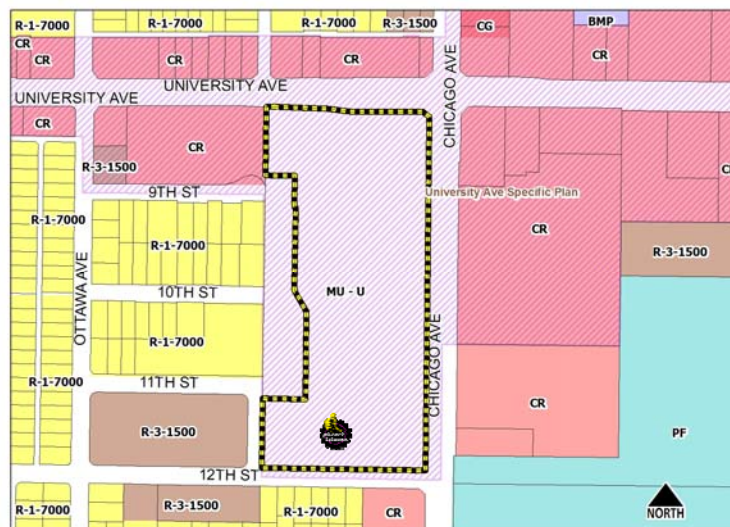
RiversideCa.gov

GENERAL PLAN

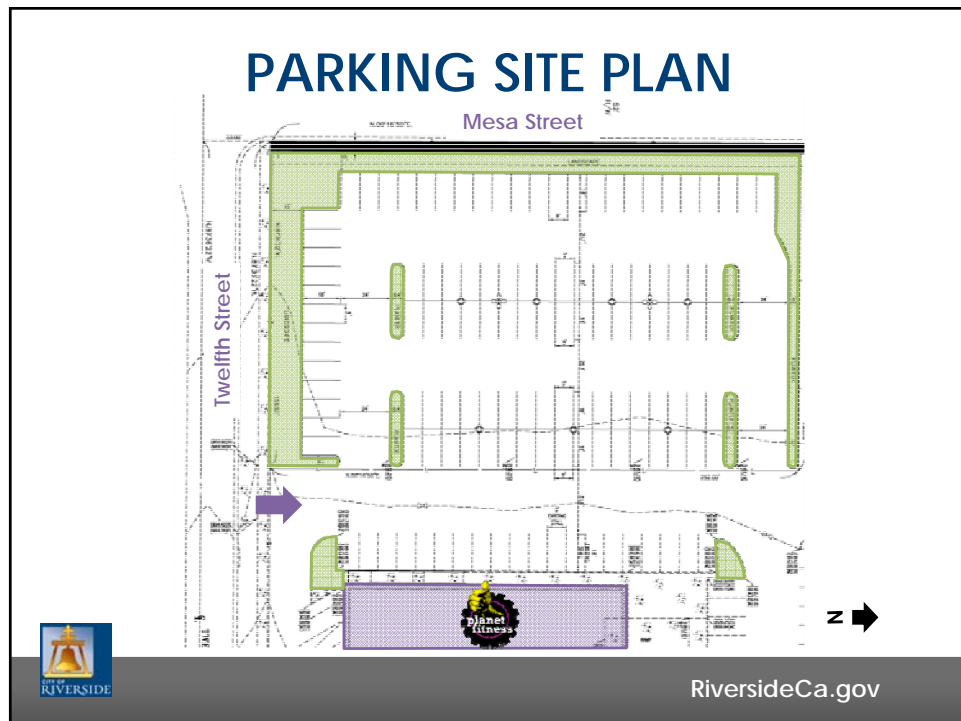
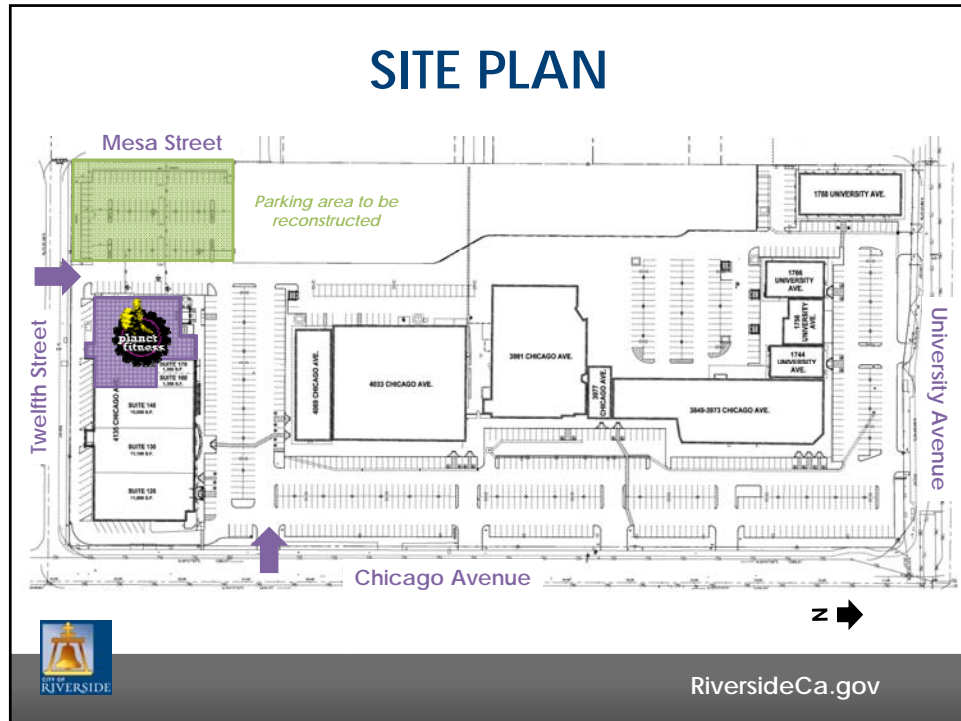


RiversideCa.gov

ZONING



RiversideCa.gov

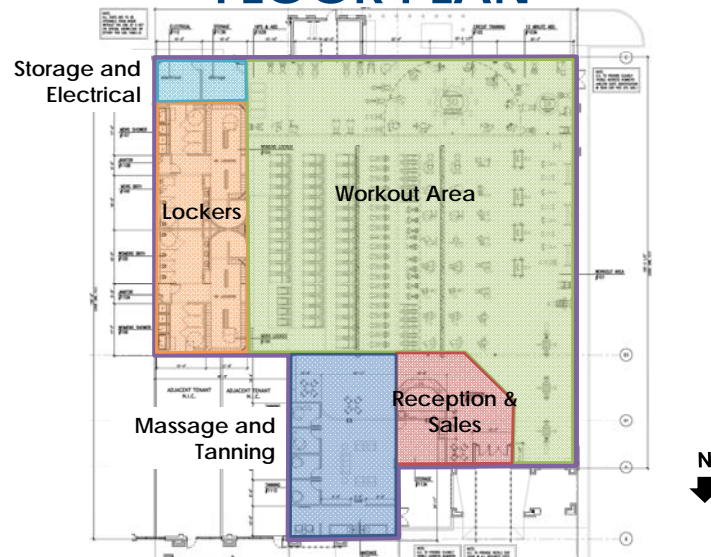


LANDSCAPE PLAN



RiversideCa.gov

FLOOR PLAN



RiversideCa.gov

SITE PHOTOS



Front (North) Elevation; looking east/south



RiversideCa.gov

SITE PHOTOS



Side (West) Elevation; looking north/east



RiversideCa.gov

SITE PHOTOS



Rear (South) Elevation; looking north/east



RiversideCa.gov

SITE PHOTOS



Twelfth Street Frontage and Parking Area; looking east/south



RiversideCa.gov

RECOMMENDATION

That the City Planning Commission Recommend that the City Council:

1. **DETERMINE** that Planning Case P16-0011 (Conditional Use Permit) constitutes an existing facility and is therefore categorically exempt from the provisions of the California Environmental Quality Act per Section 15301 of the CEQA Guidelines; and
2. **APPROVE** Planning Case P16-0011 (Conditional Use Permit), based on the findings in the staff report and subject to the recommended conditions of approval.



RiversideCa.gov

PLANET FITNESS

- 18,000 Square & Fitness Club
- Open 24 hours daily, 7 days per week
- Anticipated 120-180 patrons in a 24-hour period
- 4-6 staff daytime and 2-3 overnight staff members daily
- Additional services include massage and tanning
- Reconfiguration & reconstruction of 104-stall parking lot



RiversideCa.gov