



Summer 2016 Outlook

Board of Public Utilities
May 23, 2016

RiversideCa.gov

Outline

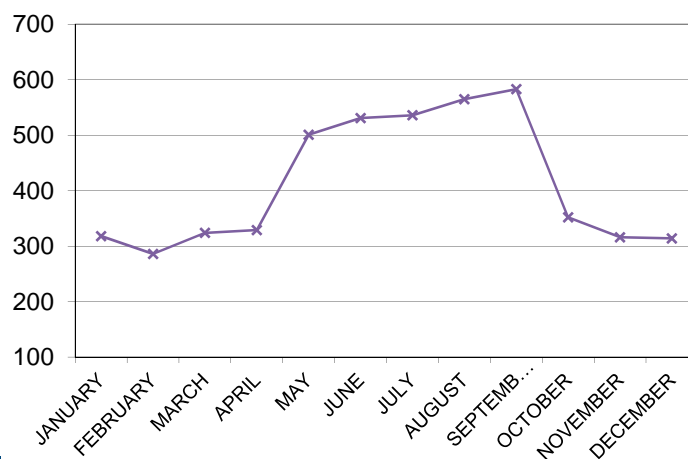
1. Electric projections and preparations
2. Natural gas operations and potential impacts
3. Current activities
4. Water demand and performance



2

RiversideCa.gov

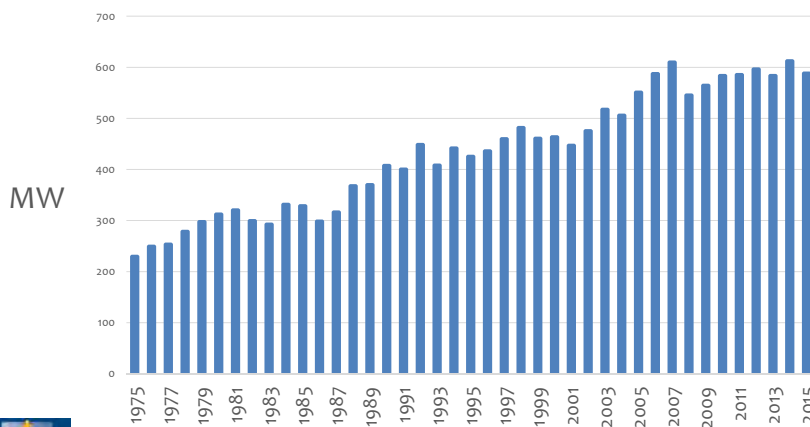
Typical Annual Load Pattern



3

RiversideCa.gov

Electric System Peak 612 MW (2014)



4

RiversideCa.gov

Preparations For Field Crews

1. Actions on days forecast over 100F
 - a. No scheduled interruptions to customers
 - b. Crews working in the evening
2. Stand-by crews on weekends
3. Contract crews available



5

RiversideCa.gov

Preparations For Electric System Readiness



Casa Substation T1



9 Transformers upgraded



Mobile Equipment



6

RiversideCa.gov

Aliso Canyon

- Natural gas storage facility



7

RiversideCa.gov

18 large power plants representing ~9,800 MW of capacity are supported by Aliso Storage



Overarching RPU Objectives

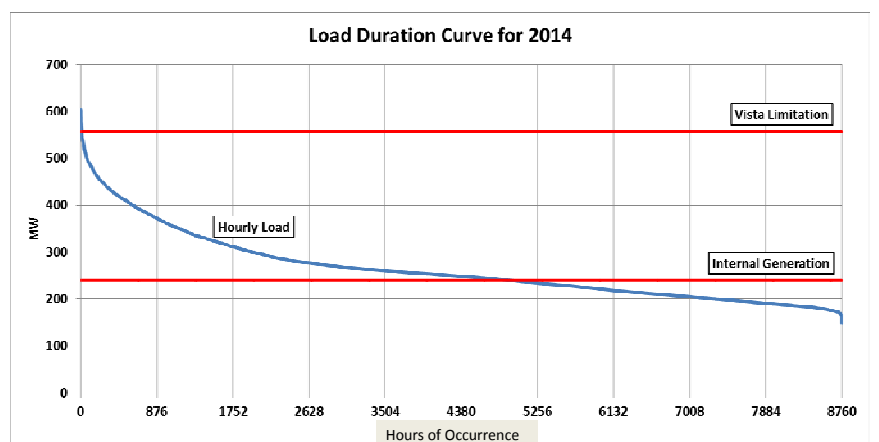
1. Maintain Electric Service Reliability
2. Avoid Overloading Vista Substation and Transmission Lines
3. Compliance with curtailment orders
4. Orderly conservation
5. Avoid involuntary load shedding



9

RiversideCa.gov

RPU's Load Duration Curve



10



RiversideCa.gov

Aliso Canyon Strategies

1. Coordinate widely
2. Communicate widely
3. Conserve power
4. Load Vista safely
5. Legislative advocacy
6. Rolling blackouts – possible
7. Water Operations



11

RiversideCa.gov

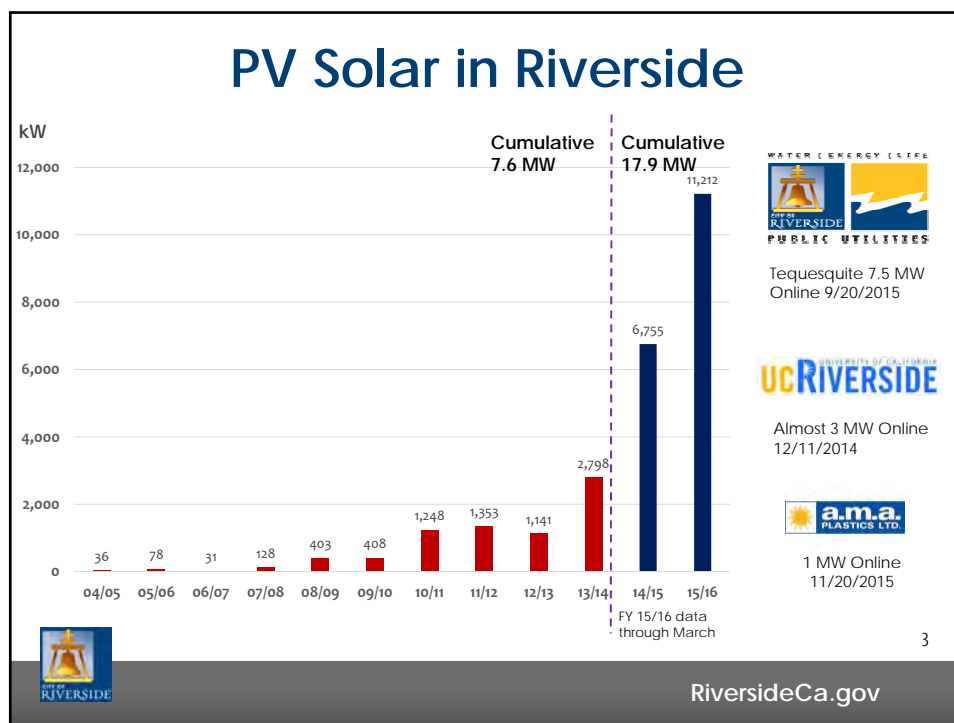
Current Aliso Work Activities

1. Scenario planning
2. Communication protocols
3. New operating procedures
4. Conservation



12

RiversideCa.gov



Customer Communications

1. May Back-of-Bill
2. Key Accounts
3. Good Morning Riverside- July sponsorship
4. RPU.com – Power Partner sign-up
5. Explore Riverside Magazine Summer issue
6. Ads - Billboards, PE, La Opinion, Voice



14

RiversideCa.gov

Power Partners Program

1. Voluntary load shed/shift program targeting RPU's large industrial customers
2. Implemented in 2012 in response to San Onofre Nuclear (SONGS) closure
3. Customers agree curtail load for regional power supply issues



15

RiversideCa.gov

Power Partners Program

4. Modify Program in response to Aliso Canyon
5. Events would include gas curtailments that threaten RPU's internal generation
6. Customers would agree to curtail a maximum number of times during June-October
7. Curtailments anticipated for fixed durations
8. Evaluate incentives for participation



16

RiversideCa.gov

Previous Power Partner Participants

- RUSD
- United Technologies Aerostructures
- Superform
- County of Riverside
- MBM
- Flexsteel Industries
- GAR Labs
- Stater Bros.
- Manheim
- Toro
- Bourns Inc.
- UCR

11 Megawatts of Voluntary Demand Response

GOAL - Increase 2016 Partner Participation



17

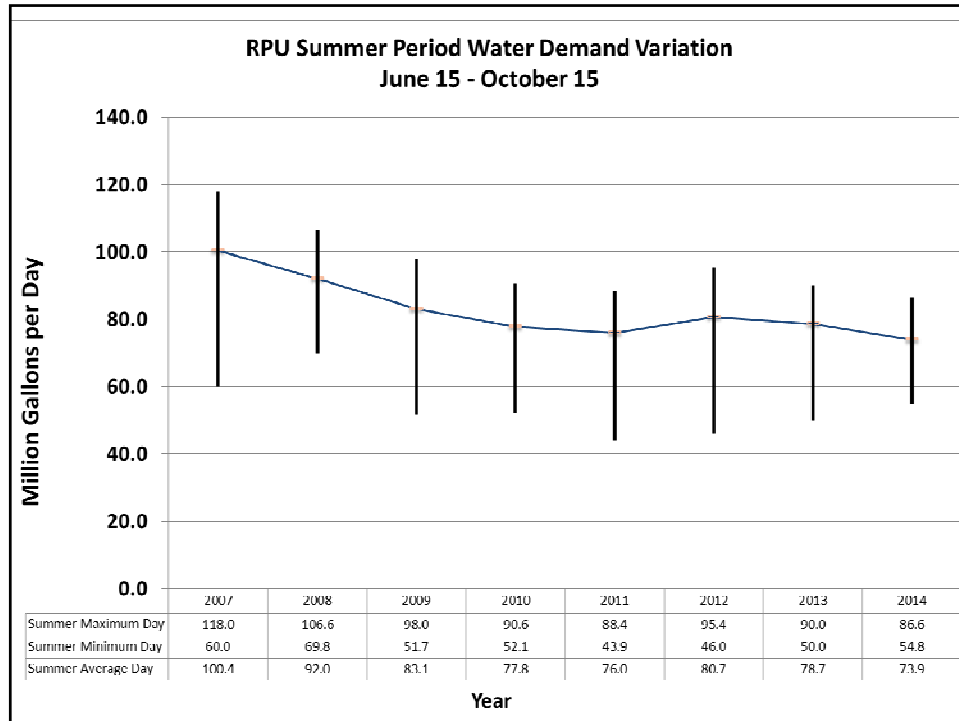
RiversideCa.gov

WATER



18

RiversideCa.gov



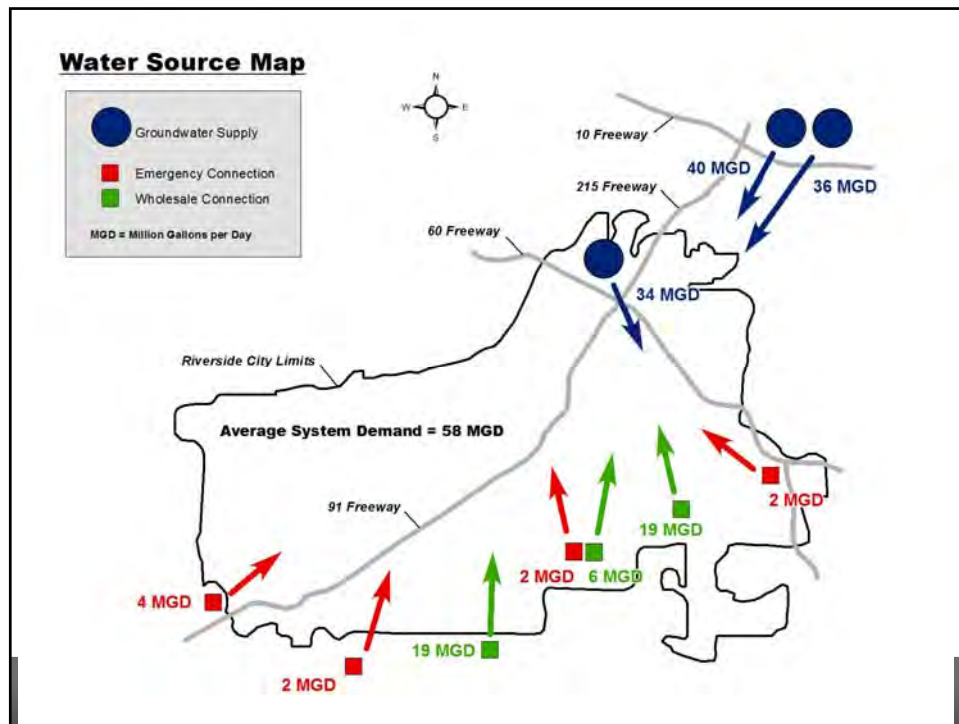
Water Demand

1. Total Water Use declined from 2013, continuing a downward trend
2. Per capita water use declined significantly in August following Board and Council action related to the state-wide drought event
3. Anticipate peak demand – 85 Million Gallons per Day (MGD)
4. Lower demands facilitates warm weather wholesale deliveries to Western Municipal Water District



20

RiversideCa.gov



Water System Performance

1. System capacity is about 110 MGD
2. Able to participate in SCE demand response events
 - a. Eight events in 2015 and ten events in 2014
 - b. Financial incentives from demand response were \$93,142 in 2015
3. Analyzing ability to reduce power demand within RPU service territory



22

RiversideCa.gov

Recommendation

Receive and file this presentation and oral update.



23

RiversideCa.gov