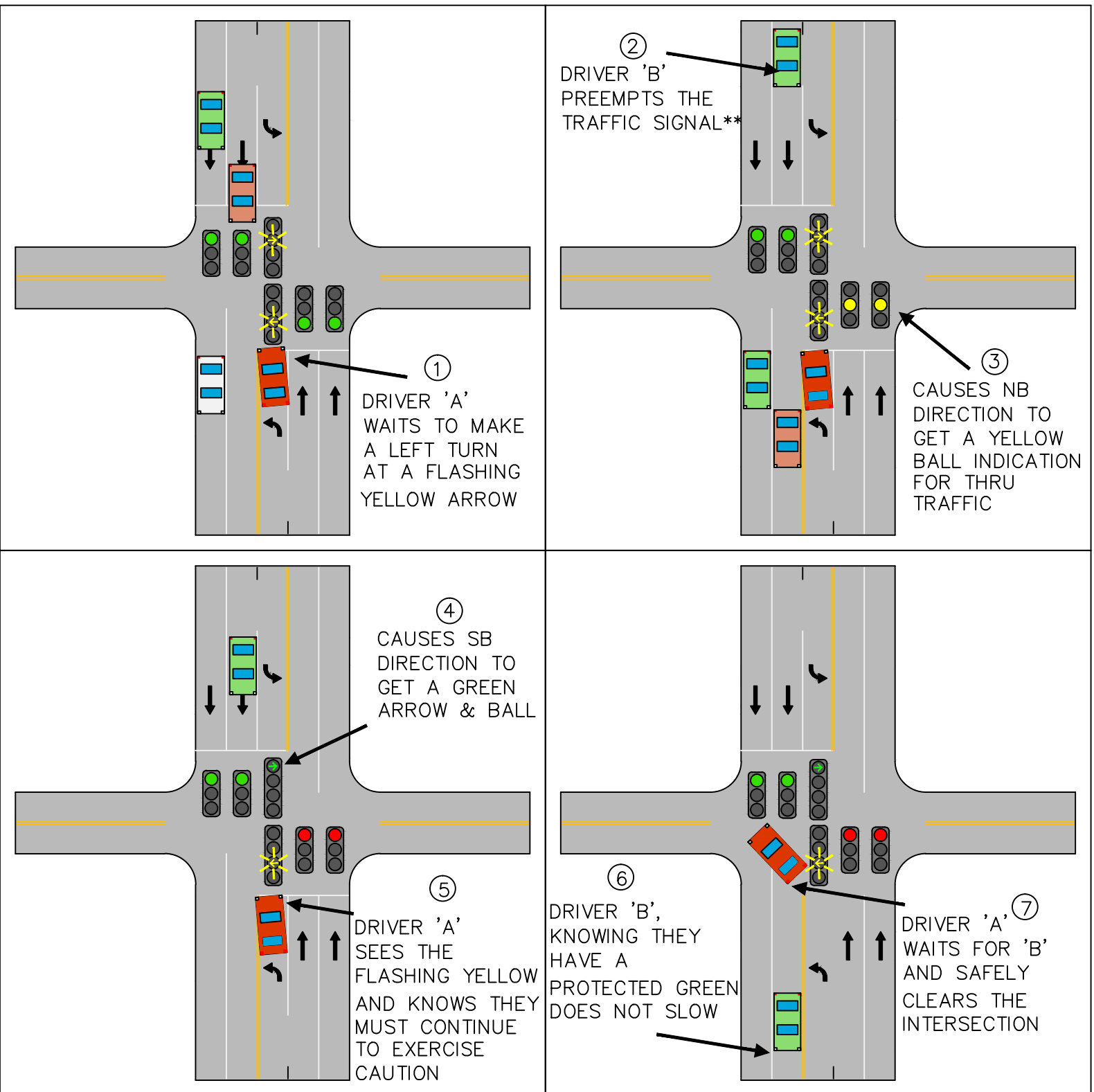


# ILLUSTRATION OF CORRECTING THE "YELLOW TRAP"\* USING 4 SECTION HEAD & FLASHING YELLOW ARROWS



\*WHILE RIVERSIDE CURRENTLY AVOIDS THE OCCURENCE OF THE "YELLOW TRAP" THROUGH PROGRAMMING, THE PROPOSED 4-SECTION CONFIGURATION AVOIDS THE "YELLOW TRAP" ENTIRELY

\*\* PREEMPTION REFERS TO THE USE OF AN EMITTER DEVICE TO FORCE A TRAFFIC SIGNAL TO GO 'GREEN' IN THE DIRECTION OF THE DEVICE. USED LEGALLY BY FIRE/AMBULANCES, BUT THERE ARE MANY ILLEGAL EMITTERS USED BY MOTORISTS