

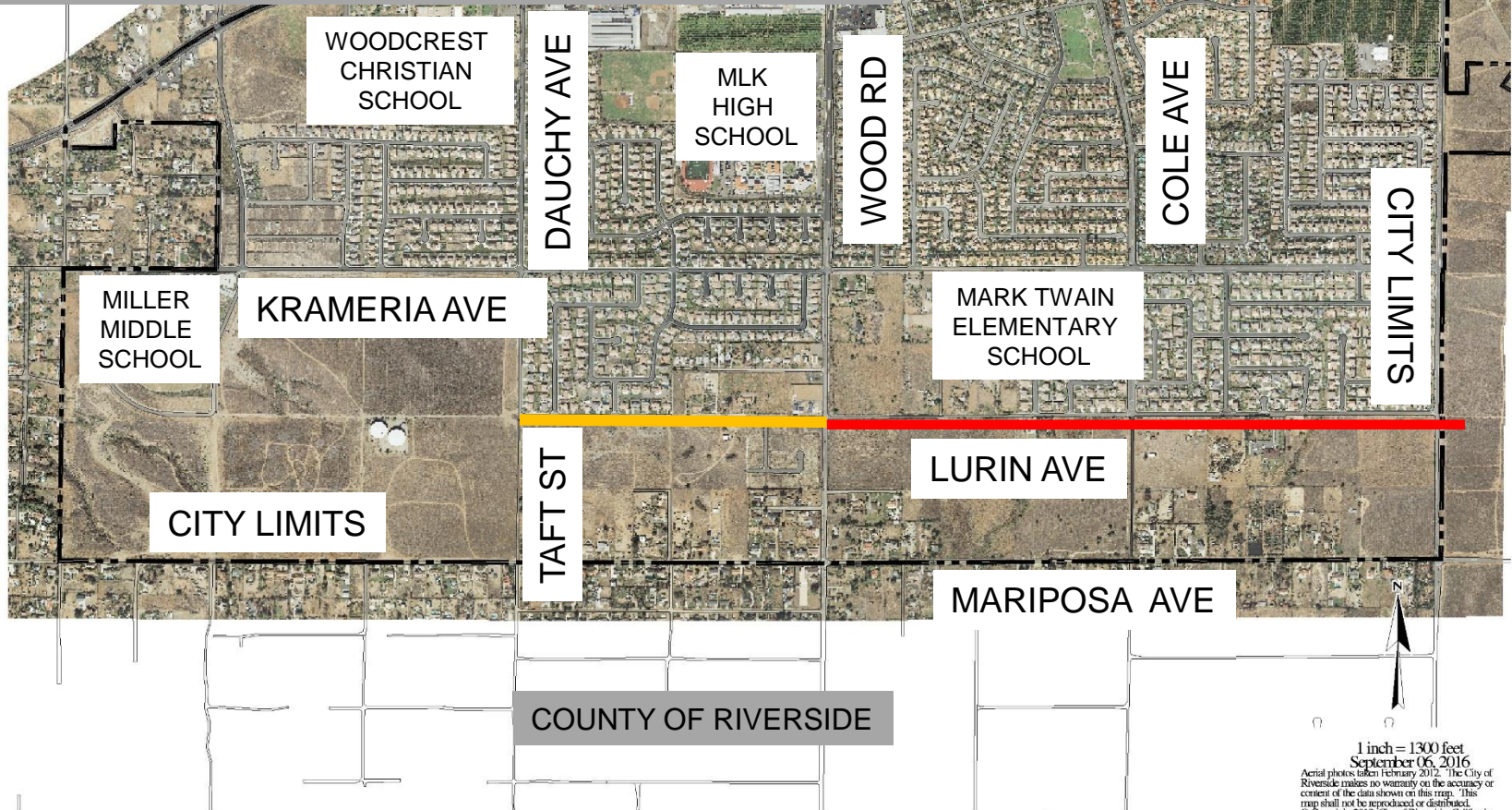


SPEED LIMIT ZONE ESTABLISHMENTS LURIN AVENUE

 Proposed Establishment of 25 MPH Speed Limit Zone on Lurin Ave from Taft St. to Wood Rd.

 Proposed Establishment of 30 MPH Speed Limit Zone on Lurin Ave from Wood Rd. to Barton St.



1 inch = 1300 feet
September 06, 2016
Aerial photos taken February 2012. The City of Riverside makes no warranty on the accuracy or content of the data shown on this map. This map shall not be reproduced or distributed.
© Copyright 2013, City of Riverside, California
Printed by: DFULLER