



Homelessness in Riverside

City Manager's Office

City Council
October 11, 2016

RiversideCa.gov

FRAMEWORK

 **OCTOBER 11 - Afternoon Workshop**

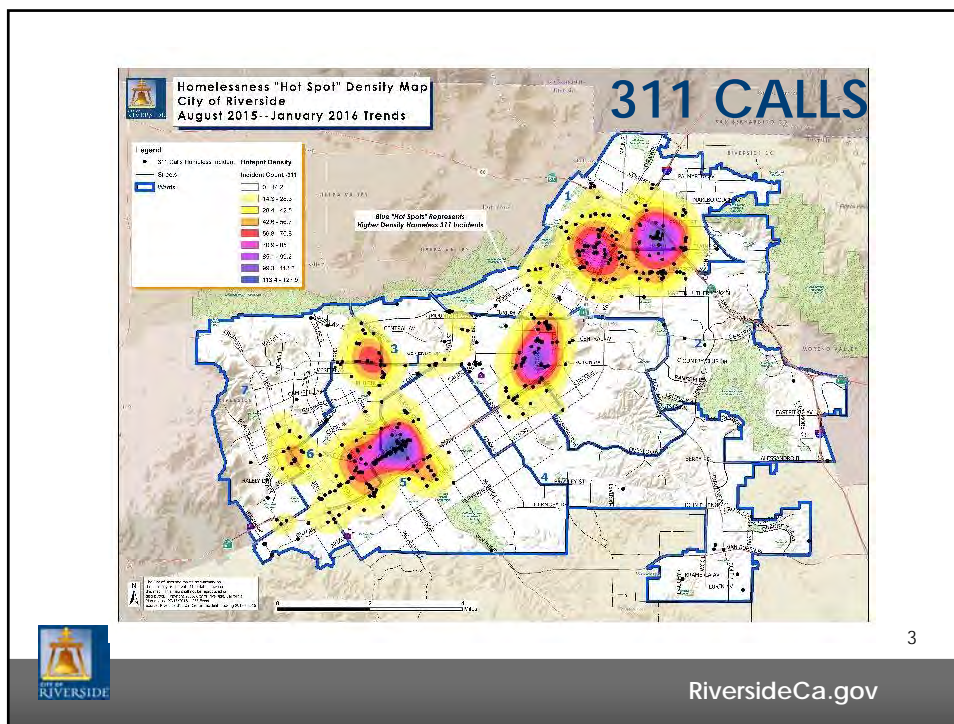



OCTOBER 11
Evening Workshop

2



RiversideCa.gov



BUSINESS IMPACTS



5

RiversideCa.gov

BUSINESS IMPACTS



6

RiversideCa.gov

SANTA ANA



7

RiversideCa.gov

SAN DIEGO



8

RiversideCa.gov

HAWAII



9

RiversideCa.gov

RIVERSIDE - RIVERBOTTOM



10

RiversideCa.gov

RIVERSIDE - RIVERBOTTOM



11

RiversideCa.gov

RIVERSIDE - RIVERBOTTOM



12

RiversideCa.gov

RIVERSIDE - RIVERBOTTOM



13

RiversideCa.gov

SPARE CHANGE



14

RiversideCa.gov

COMMUNITY LIVABILITY CONCERNS

Scheduled speaker:

1. James Hawthorne, Business Owner
2. Janice Penner, Riverside Downtown Partnership
3. Tom Mangione, Business Owner



15

RiversideCa.gov

IMPACT TO PARKS

1. Parks impacted on a regular basis: 22
 - A. 58 staff and contractor incident reports
2. Homeless activities impacting parks
 - A. Camping on playground structures, benches, and doorways
 - B. Trash and debris
 - C. Indecent exposure, public urinating and defecating
 - D. Illegal substances (needles and paraphernalia)
 - E. Fights/altercations
 - F. Harassment of park visitors
 - G. Unsafe feeling by park users
 - H. Vandalism



16

RiversideCa.gov

IMPACT TO PARKS

3. \$20,000 annually for routine maintenance due to previously mentioned issues at 4 of the most heavily impacted parks



17

RiversideCa.gov

PRCSD ACTIONS

1. Restricted access (fencing Fairmount, North, and White Parks)
2. Added security lighting
3. Signage
4. Community Livability Task Force, Hole Lake clean-up project



18

RiversideCa.gov

STRATEGIES – OTHER CITIES

1. Designated Children's Play Areas (Hollywood FL, Miami Beach, FL; New York City)
2. Security cameras, voice capabilities
3. Homeless Outreach Teams, Services
4. Ordinance changes
5. Park rangers
6. Live in park custodians, homeless veterans
7. Removal of park amenities
8. Deploying park sprinklers
9. Clearing brush



19

RiversideCa.gov

IMPACT TO PARKS



20

RiversideCa.gov

IMPACT TO PARKS



21

RiversideCa.gov

IMPACT TO PARKS



22

RiversideCa.gov

IMPACT TO LIBRARIES

1. Current climate
 - A. Conduct violations
 - B. Customer impact
 - C. Staff impact
2. Best practices
 - A. Mental health services
 - B. Security



23

RiversideCa.gov

IMPACT TO LIBRARIES



24

RiversideCa.gov

IMPACT TO LIBRARIES



25



RiversideCa.gov

IMPACT TO LIBRARIES



26



RiversideCa.gov

IMPACT TO LIBRARIES



27



RiversideCa.gov

COMMUNITY LIVABILITY CONCERNS

Scheduled speaker:
Councilmember Chris MacArthur
Public Feedings

28



RiversideCa.gov

Impact to Fire Department



29

RiversideCa.gov

Impact to Fire Department



30

RiversideCa.gov

Impact to Fire Department



31

RiversideCa.gov

COMMUNITY LIVABILITY CONCERNS

Scheduled Speaker

Lt. Bruce Blomdahl, Police Department

- Loitering
- Public intoxication
- Panhandling
- Encampments



32

RiversideCa.gov

COMMUNITY LIVABILITY CONCERNS



33

RiversideCa.gov

COMMUNITY LIVABILITY CONCERNS



34

RiversideCa.gov

COMMUNITY LIVABILITY CONCERNS



35

RiversideCa.gov

COMMUNITY LIVABILITY CONCERNS



36

RiversideCa.gov

COMMUNITY LIVABILITY CONCERNS



37

RiversideCa.gov

COMMUNITY LIVABILITY CONCERNS



38

RiversideCa.gov

COMMUNITY LIVABILITY CONCERNS



39

RiversideCa.gov

COMMUNITY LIVABILITY CONCERNS



40

RiversideCa.gov

COMMUNITY LIVABILITY CONCERNS



41

RiversideCa.gov

DEFINING HOMELESSNESS AND CONTRIBUTING FACTORS

Scheduled Speaker:

Benjamin Henwood, PhD, Assistant
Professor, School of Social Work at USC



42

RiversideCa.gov

COMMUNITY CHALLENGES

Scheduled speaker:

Steve Falk, Executive Director of
Community Mission of Hope, Temecula
Pantry and HOPE in Lake Elsinore



43

RiversideCa.gov

WHAT THE STATE IS DOING

- Approved Legislation
 - AB 1618: No Place Like Home
- Pending Legislation
 - AB 2031: Gives cities authority to approve issuance of bonds for affordable housing development paid for with "boomerang funds" without voter approval
 - AB 2501 and AB 2442: Affordable housing density bonuses



44

RiversideCa.gov

WHAT THE STATE IS DOING

- Pending Legislation
 - AB 2821: Housing for a Health California Program, leverages Medi-cal to create supportive housing through rental subsidies with Medi-cal beneficiaries experiencing homelessness.
 - SB 1380 – Homeless Coordinating and Financing Council to oversee the implementation of the Housing First regulations
- Affordable housing funding resources



45

RiversideCa.gov

WHAT THE COUNTY IS DOING

Department of Public Social Services

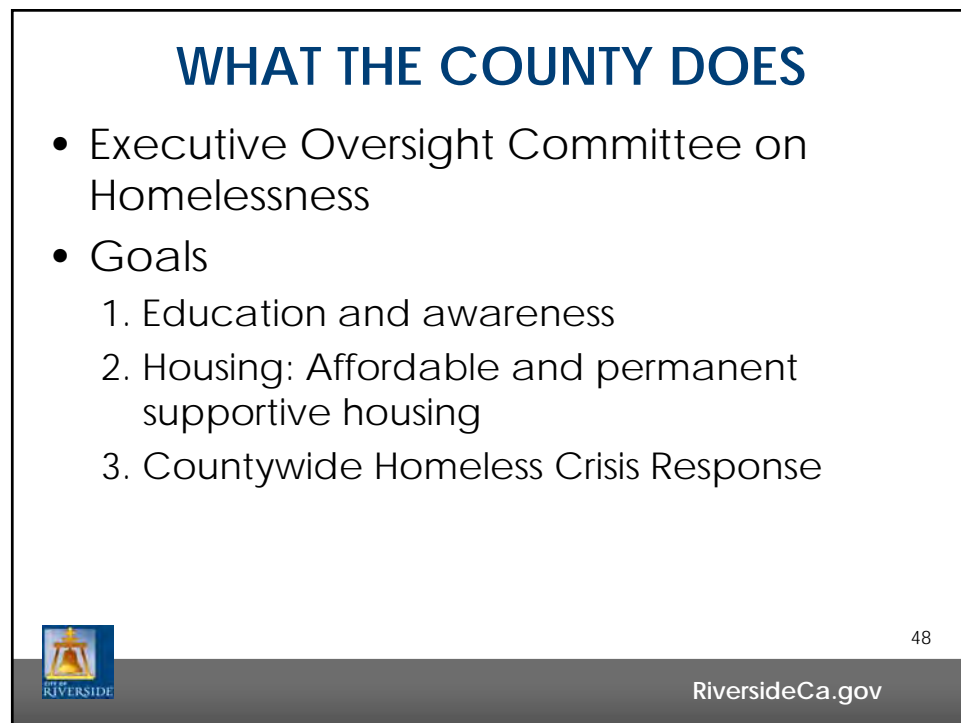
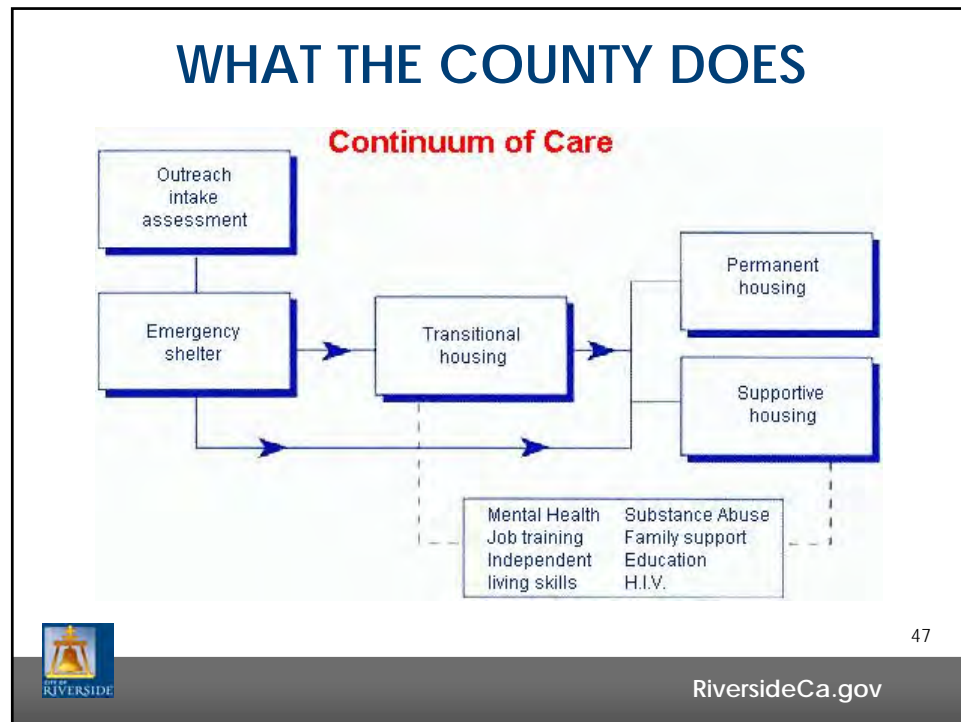
- Adult and Children's Services
- Self-Sufficiency
- In-Home Supportive Services
- Homeless Programs
- Family Resource Center
- First 5 Riverside



46



RiversideCa.gov



WHAT THE COUNTY DOES

Statement of Principles



49

RiversideCa.gov

WHAT THE COUNTY DOES

- Behavioral Health Outreach Services
- Mental Health Clinics
- Regional Medical Center Emergency Treatment Services (ETS)
- Permanent Supportive Housing
- Other services



50

RiversideCa.gov

WHAT THE COUNTY DOES

- Riverside County jail system
 - Robert Presley Detention Center
- Discharge process



51

RiversideCa.gov

HOMELESS PLANS

- Riverside Community Broad-based Homeless Action Plan – adopted on June 3, 2003
- Homeless Prevention and Reduction Strategy 5-Year Plan – adopted on September 18, 2012
- County of Riverside's 10-Year Strategy to End Homelessness



52

RiversideCa.gov

HOMELESS INITIATIVES



Zero: 2016
from Community Solutions



53

RiversideCa.gov

WHAT THE CITY DOES

- Outreach responds to 311 calls to provide services
 - Illegal activities are reported to PD to address
- Street weekly engagements with Outreach, PD, Code Enforcement and Public Works



54

RiversideCa.gov

WHAT THE CITY DOES

- Rapid Re-Housing
- Permanent Supportive Housing
 - 16 units
 - Average housing cost per client: \$15,450



55

RiversideCa.gov

PROGRAMS IN THE CITY



56

RiversideCa.gov

OPERATION SAFEHOUSE



57

RiversideCa.gov

PATH OF LIFE

Emergency Shelter Program 64 beds for single men and women	Rapid Re-Housing for Families 36 units with temporary subsidies and support	Behavioral Health Program Counseling and enrichment
Family Shelter 50 beds for families with children	Permanent Supportive Housing 80 Permanent Housing Units	Childcare Program Free 0 – 5 childcare with transportation
Cold Weather Shelter 65 beds from December to April	Street Outreach Riverside County	Employment Pipeline job readiness, referral and placement



58

RiversideCa.gov

CATHOLIC CHARITIES



Providing Help • Creating Hope



59

RiversideCa.gov

WHAT THE CITY DOES

Hole Lake Clean-up efforts

- Collaboration between City Departments
- Cost of clean-up efforts



60

RiversideCa.gov



Hole Lake Issues

1. Between 30 and 50 homeless individuals living in multiple encampments
2. Excessive amount of trash and debris inside the Hole Lake stream and the surrounding area, which created a significant environmental impact and public nuisance



62

RiversideCa.gov

RIVERSIDE - HOLE LAKE



63

RiversideCa.gov

RIVERSIDE - HOLE LAKE



64

RiversideCa.gov

RIVERSIDE - HOLE LAKE



65

RiversideCa.gov

RIVERSIDE - HOLE LAKE



66

RiversideCa.gov

RIVERSIDE - HOLE LAKE



67

RiversideCa.gov

Outreach & Clean-Up

- Several outreach efforts made prior to
- Actual project occurred on July 29 and 30
 - Public Works
 - Parks
 - Code Enforcement
 - Homeless Outreach
 - and Police personnel



68

RiversideCa.gov



69



RiversideCa.gov



Before



After

70



RiversideCa.gov



Costs

1. A total of 72.84 tons of debris was removed
2. The total cost of the Hole Lake Operation was approximately \$40,376.89



73

RiversideCa.gov

END OF AFTERNOON SESSION



74

RiversideCa.gov

FRAMEWORK FOR EVENING SESSION



5. What do we explore further to determine how best to address homelessness?



OCTOBER 11
Evening Workshop



75

RiversideCa.gov

COLLABORATION WITH FAITH-BASED ORGANIZATIONS



76

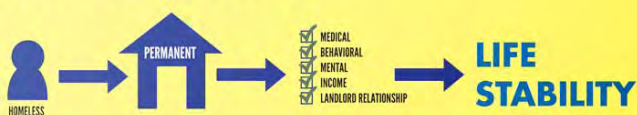
RiversideCa.gov

HOUSING FIRST

Typical "Housing Readiness"



Housing First



77

RiversideCa.gov

HOUSING

- Cost of housing vs. health care and/ or law enforcement
- Housing crisis nationally and locally



78

RiversideCa.gov

HOUSING FIRST PROVIDER



79

RiversideCa.gov

AFFORDABLE HOUSING DEVELOPER



80

RiversideCa.gov

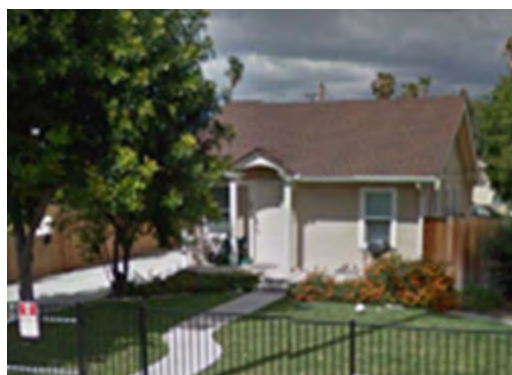
CONTINUING EFFORTS



81

RiversideCa.gov

HOUSING FIRST RECOMMENDATION



82

RiversideCa.gov

COMMUNITY RESPONSE TEAM

1. Housing First
2. Services to be provided
3. Benefits
4. Property needed
5. Staffing needs



83

RiversideCa.gov

RIVERSIDE AT WORK PROGRAM

1. Employ 5 homeless clients every 6 months
2. Develop self-confidence and job skills
3. Provide program participants with up to 12 months of rental assistance
4. Program funded by Altura Credit Union
5. Services provided by Access Center staff, Goodwill and Riverside County Workforce



84

RiversideCa.gov

COMMUNITY EDUCATION

1. When Helping hurts
2. How to donate and volunteer towards long-term solutions
3. New campaign geared towards residents and business owners



85

RiversideCa.gov

EXPLORE PROGRAMS & SERVICES

Enforcement models to address loitering, public intoxication, panhandling and encampments



86

RiversideCa.gov

EXPLORE PROGRAMS & SERVICES

Homeless Court Program

1. Alternative to traditional criminal justice court system
2. Partnership between court, prosecutor, public defender and local social service agencies
3. Plea bargain system with alternative sentencing structure
4. Existing Program: Indio Homeless Court



87

RiversideCa.gov

EXPLORE PARK ACTIVITIES

1. Create boundaries for the children's play zones
2. Reinstitute park rangers "ambassadors"
3. Fencing identified picnic shelters
4. Evaluate park amenities, benches, tables
5. Increase lighting to LED
6. Relocate food distribution programs



88

RiversideCa.gov



RECOMMENDATIONS

That the City Council participate in the workshop and provide policy direction to staff return to City Council at a later date with a full analysis for City Council consideration.



90

RiversideCa.gov