



If you are a student considering the Riverside City College as a place to further your education, please contact the DRC office. Our counselors and staff are ready to make your transition into the educational setting a smooth one. We are eager to answer any questions and assist you in reaching your educational goals.

Riverside City College
Disability Resource Center
Administration Building, Room 121
Phone: 951/222-8060
Fax: 951/222-8063
TDD: 951/801-5676

The Riverside Community College District complies with all federal and state rules and regulations and does not discriminate on the basis of ethnic group identification, national origin, religion, age, gender, gender identity, gender expression, race, color, ancestry, genetic information, sexual orientation, physical or mental disability, or any characteristic listed or defined in Section 11135 of the Government Code or any characteristic that is contained in the prohibition of hate crimes set forth in subdivision (1) of Section 422.6 of the California Penal Code, or any other status protected by law. This holds true for all students who are interested in participating in education programs and/or extracurricular school activities. Limited English speaking skills will not be a barrier to admission or participation in any programs. Harassment of any employee or student with regard to ethnic group identification, national origin, religion, age, gender, gender identity, gender expression, race, color, ancestry, genetic information, sexual orientation, physical or mental disability, or any characteristic listed or defined in Section 11135 of the Government Code or any characteristic that is contained in the prohibition of hate crimes set forth in subdivision (1) of Section 422.6 of the California Penal Code, or any other status protected by law is strictly prohibited. Inquiries regarding compliance, and/or grievance procedures may be directed to the District's Title IX Officer/Section 504/ADA Coordinator, Ms. Chani Beeman, 450 E. Alessandro Blvd., Riverside, CA 92508. (951) 222-8039.

Alternate formats for this material are available to individuals requiring disability accommodation. Please contact the DRC office at (951) 222-8060 to request an alternate format.

To Receive Services

- 1) Complete a college application online at www.rcc.edu.
- 2) New students must schedule an online appointment to take the Accuplacer assessment test for placement into English, math, and reading courses. The PTESL is required for placement into ESL courses. Call to confirm hours of service: Riverside 951/222-8451.
- 3) RCC online orientation and counseling appointment available via WebAdvisor.
- 4) Provide written documentation of a qualifying condition signed by a medical professional and/or physician to DRC. Complete forms and take with you to appointment.

DRC Forms:

- Application
- Disability Verification
- Consent for Release of Information

- 5) Two-part process:
 - a) Schedule an intake interview with a DRC specialist. Intake appointments provide students with an overview of DRC.
 - b) Schedule an appointment with a DRC counselor. Appointment involves discussing education accommodations and educational goals.

Disability Resource Center
Riverside Community College District
4800 Magnolia Avenue
Riverside, CA 92506-1299



Disability Resource Center



Available in alternate format.



What can the Disability Resource Center do for you?

The DRC exists to ensure access and accommodation to individuals with disabilities. Among the conditions which entitle a student to accommodation and support services are:

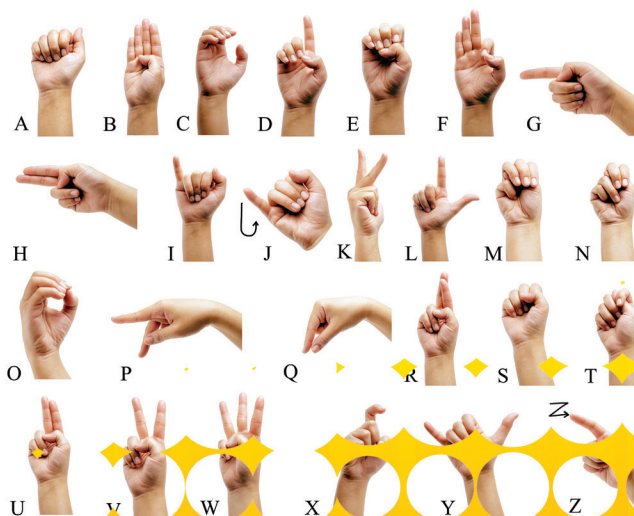
- Acquired Brain Injury / TBI
- Developmental Disabilities
- Health Impairments
(*cardiac, cancer, diabetes, arthritis, etc.*)
- Hearing Impairments
- Learning Disabilities
- Mobility Impairments
- Psychological Disabilities
- Temporary Disabilities
(*lasting longer than 45 days*)
- Visual Impairments
- PTSD
- Depression
- and others

“We rise to great heights by a winding staircase of small steps.”
--Francis Bacon

Academic Accommodations & Support Services

DRC staff members act as liaisons to all areas of the College to eliminate physical, academic, and attitudinal barriers. Accommodations are determined based on the educational limitations of the documented disability. Accommodations and support services *may* include, but are not limited to:

- Priority registration
- Assessment to determine eligibility as a student with a learning disability
- Notetaking
- Test accommodation/extended time
- Reader services
- Interpreting services
- Real time captioning
- Training in adaptive technologies
- Alternate Media – *E-text, DAISY MP3's, Braille, Captioned videos, etc.*
- Adaptive equipment loan



High Tech Center

Adaptive technology is available for students to achieve maximum independence while pursuing their educational goals.

DRC computers are also located throughout the labs on the College. Check the current schedule of classes for lab hours.

- Scan & Read Technology
- Screenreaders
- Screen magnification software
- Voice recognition
- CCTV's
- Large monitors
- Ergonomic and other alternative keyboards
- Talking dictionaries
- Visual idea-mapping software
- Math/tutorial/CAD software
- and much more. . .

Workability III

- Workability III is a cooperative program between Riverside Community College District and the State of California Department of Rehabilitation (DOR)
- Participants may be eligible for a wide range of benefits such as clothing and transportation allowance.
- Educational and career planning
- Career counseling and assessment

You may contact the Department of Rehabilitation to schedule an appointment at:

Riverside Office 951/782-6650

Corona Office 951/270-1460

Temecula Office 951/658-4441

Workability III support services may include, but are not limited to:

College Classes

- Career Exploration & Planning (GUI-47)

Employment Services & Preparation

- Resume & cover letter writing
- Job development

