



T-Intersection Disabled Access Ramps

Public Works Department

City Council

January 24, 2017

RiversideCA.gov

BACKGROUND

September 25, 2012 – City Council amended the parking fine Bail Schedule to include California Vehicle Code (CVC) 22500(I) described as Parked Blocking Sidewalk Wheelchair Access in amount of \$341.



2

RiversideCA.gov

BACKGROUND

CVC 22500 prohibits:

Stopping, parking, or leaving any vehicle standing whether attended or unattended, in front of or upon that portion of a curb that has been cut down, lowered, or constructed to provide wheelchair accessibility to the sidewalk.



3

RiversideCA.gov

BACKGROUND

October 8, 2015 – Transportation Committee recommended that City Council reduce the fine violation of CVC 22500(l) from \$341 to \$41 and to clarify what constitutes a violation of this section.

December 15, 2015 – City Council amended the bail schedule to reduce the violation of CVC 22500(l) from \$341 to \$41 and recommended that the item be taken to the Commission on Disabilities for review.



4

RiversideCA.gov

BACKGROUND

September 19, 2016 – Commission on Disabilities recommended that the City Council amend the bail schedule to increase the fine from \$41 to \$250.

November 15, 2016 – City Council amended the bail schedule to increase the violation for CVC 22500(I) from \$41 to \$250 and requested a report to reconsider the costs related to the installation and maintenance of red curbs at disabled access ramps and a public awareness plan regarding the ramps.

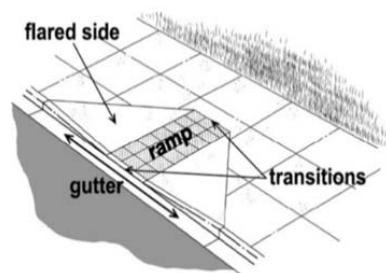


5

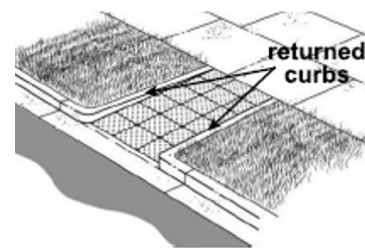
RiversideCA.gov

T-INTERSECTION SIDEWALK CURB RAMPS

1. Tapered curb ramp with flared sides.



2. Curb ramp with vertical edges.



6

RiversideCA.gov

INSTALLATION OF ACCESS RAMPS

1. There is no guidance in the CVC or traffic manuals that encourage the marking of these sidewalk wheelchair accessible curb ramps.
2. Beginning in 2015, the City's standard for these ramps was updated to include truncated domes with a yellow surface color, which may also improve visibility.



7

RiversideCA.gov

RED CURB ACCESS RAMPS

If painted red, the paint would be 3 to 6 feet out on either side depending on the location as these types of ramps vary in size.

1. Tapered Curb Ramp



2. Return Curb Ramp



This would remove an additional 6 to 12 feet to the width of the disabled access ramp resulting in loss of parking in front of homes in residential neighborhoods.



8

RiversideCA.gov

INSTALLATION COST OF RED CURBS

Current Ramps: 429

Painting 429 ramps red: 27 working days

Approximate Cost - \$35,000



Future Ramps: 1,207

Painted at time of construction

Approximate Cost - \$29,000

Total Estimated Ramps = 1,636

9



RiversideCA.gov

MAINTENANCE COST OF RED CURBS

Current cost of maintaining 429 ramps red on a 2-year rotation – Two-man crew and a vehicle would take 14 working days per year.

Approximate Annual Cost - \$17,500

Future cost of maintaining all 1,636 ramps on a 2-year rotation would take approximately 2 ½ to 3 months.

Approximate Annual Cost - \$66,000

10



RiversideCA.gov

POTENTIAL IMPACTS

1. Impacts to other annual maintenance:

- Refreshing crosswalks
- Legends
- Striping
- Curb painting



2. Inventory all city streets for curb ramps installed prior to 2012 would take months to complete.



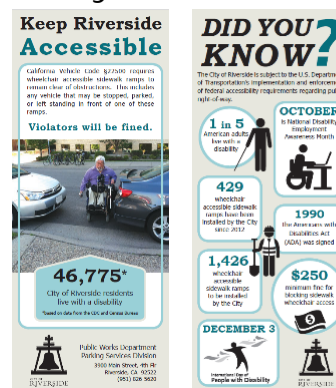
11

RiversideCA.gov

AWARENESS PLAN

- Publish article in Explore Riverside
- Monthly messages on Facebook and mySidewalk
- Create RiversideTV video
- Send email blast
- Send flyer in utility bill mailing

Estimated Cost: \$2,000



12



RiversideCA.gov

RECOMMENDATIONS

That the City Council:

1. Receive an update regarding the costs to install and maintain red paint on curbs at disabled access ramps; and
2. Provide direction to staff to regarding a program to paint red curbs at disabled access ramps and to conduct an outreach plan to raise public awareness.



13

RiversideCA.gov