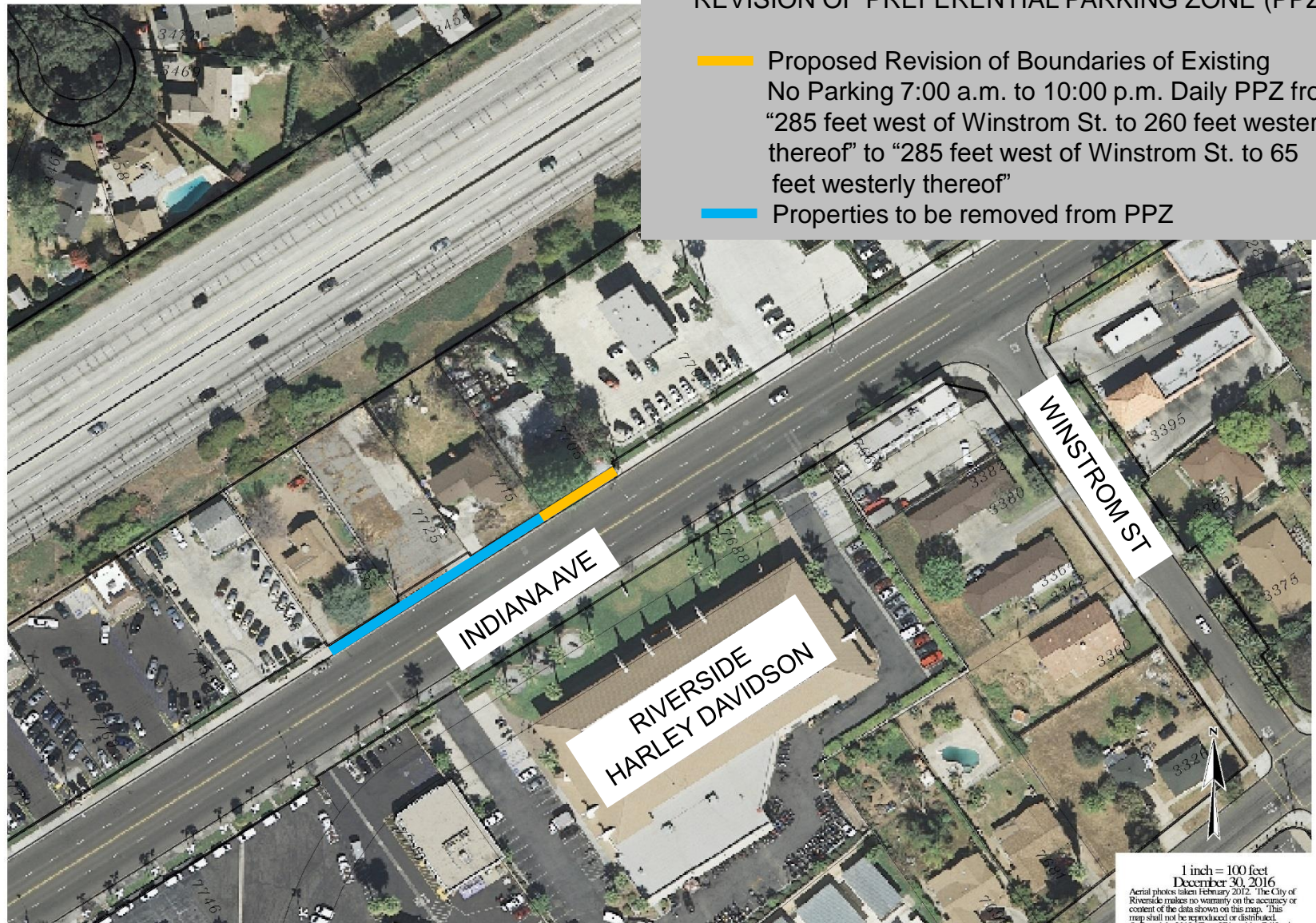


INDIANA AVENUE, NORTH SIDE REVISION OF PREFERENTIAL PARKING ZONE (PPZ)

- Proposed Revision of Boundaries of Existing No Parking 7:00 a.m. to 10:00 p.m. Daily PPZ from "285 feet west of Winstrom St. to 260 feet westerly thereof" to "285 feet west of Winstrom St. to 65 feet westerly thereof"
- Properties to be removed from PPZ



1 inch = 100 feet
December 30, 2016
Aerial photos taken February 2012. The City of
Riverside makes no warranty on the accuracy or
content of the data shown on this map. This
map shall not be reproduced or distributed.
© Copyright 2013, City of Riverside, California
Printed by: DESIJA