



PLANNING CASE P16-0877

Community & Economic
Development Department

Cultural Heritage Board
Agenda Item: 5
March 15, 2017

RiversideCA.gov

LOCATION



2

RiversideCA.gov

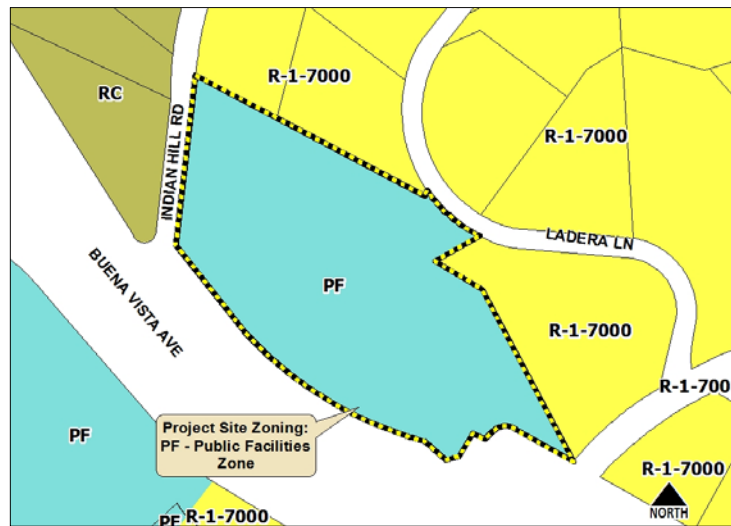
LOCATION



3

RiversideCA.gov

ZONING



4

RiversideCA.gov

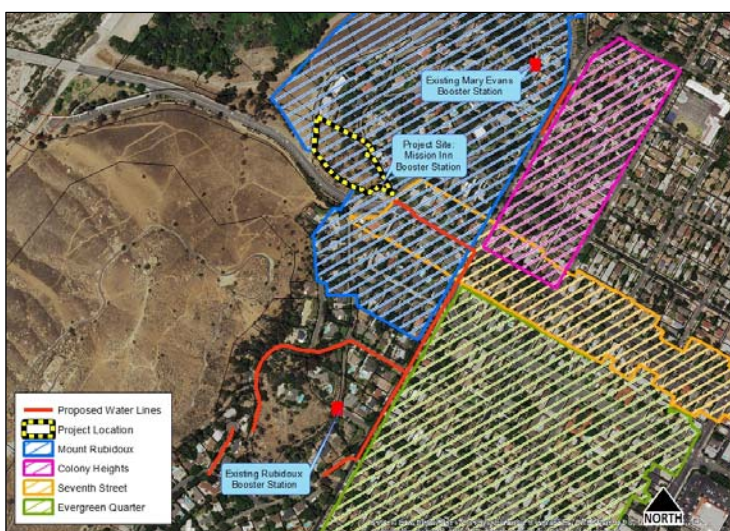
CULTURAL RESOURCES MAP



5

RiversideCA.gov

HISTORIC DISTRICTS MAP



6

RiversideCA.gov

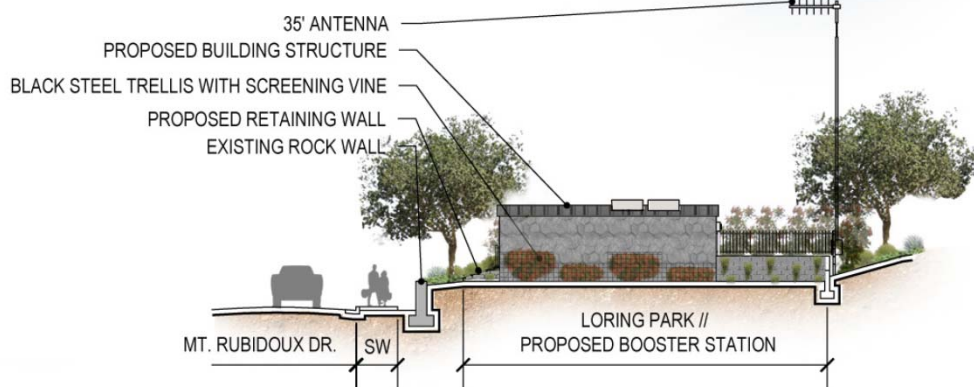
SITE MAP



7

RiversideCA.gov

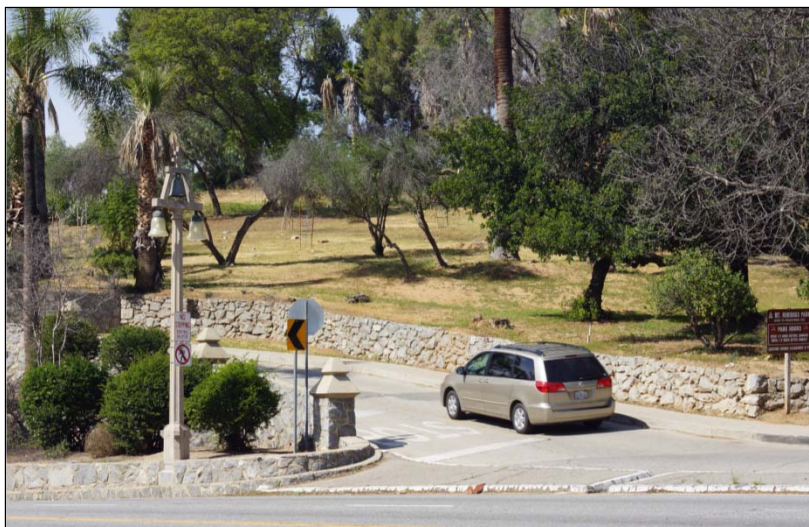
MISSION INN BOOSTER STATION



8

RiversideCA.gov

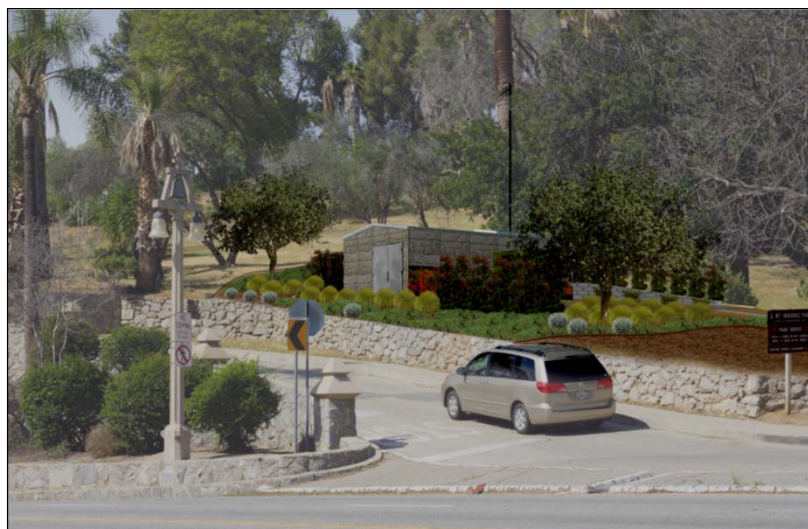
CONCEPTUAL LANDSCAPE SCENE 1



9

RiversideCA.gov

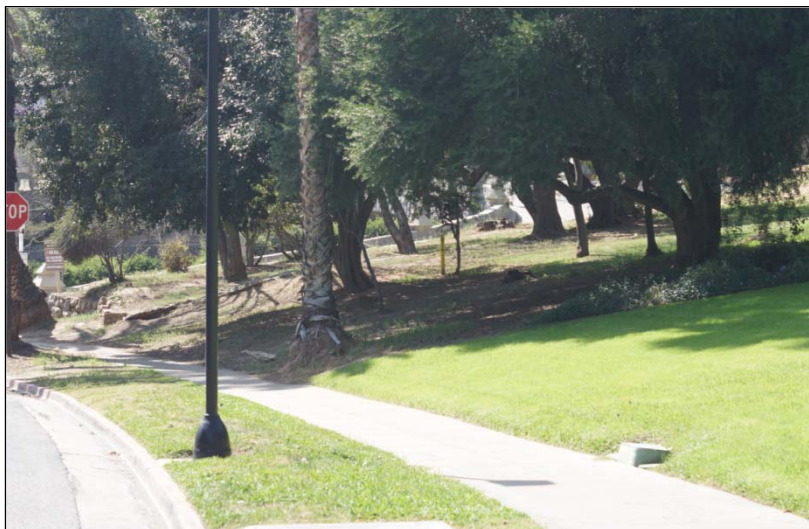
CONCEPTUAL LANDSCAPE SCENE 1



10

RiversideCA.gov

CONCEPTUAL LANDSCAPE SCENE 2



11

RiversideCA.gov

CONCEPTUAL LANDSCAPE SCENE 2



12

RiversideCA.gov

CONCEPTUAL LANDSCAPE SCENE 3



13

RiversideCA.gov

CONCEPTUAL LANDSCAPE SCENE 3



14

RiversideCA.gov

CONCEPTUAL LANDSCAPE SCENE 4



15

RiversideCA.gov

CONCEPTUAL LANDSCAPE SCENE 4



16

RiversideCA.gov

SCADA ANTENNAE POLE



17

RiversideCA.gov

SCADA ANTENNAE POLE



18

RiversideCA.gov

MARY EVANS BOOSTER STATION



19

RiversideCA.gov

MOUNT RUBIDOUX BOOSTER STATION



20

RiversideCA.gov

RECOMMENDATION

That the Cultural Heritage Board recommend that City Council:

1. **DETERMINE** that P16-0877 will not have a significant effect on historic resources under the California Environmental Quality Act (CEQA) based on the findings set forth in the case record;
2. **ADOPT** a Mitigated Negative Declaration and Mitigation Monitoring and Reporting Program (MMRP) for the Mission Inn Booster Station Installation & Pressure Rezoning Project; and
3. **APPROVE** Planning Case P16-0877 based on the facts for findings outlined in the staff report, and subject to the attached conditions, thereby issuing a Certificate of Appropriateness for the project.



21

RiversideCA.gov