



## Neighborhood Success Story

### RIVERSIDE CONCERT BAND

*Celebrating 140 years of music!*



The band's first incarnation was in **1876** as Riverside residents joined together and formed a military band to celebrate the Nation's Centennial. John McCrary was one of the first band directors. He was a son of a Riverside bridge and flume contractor.

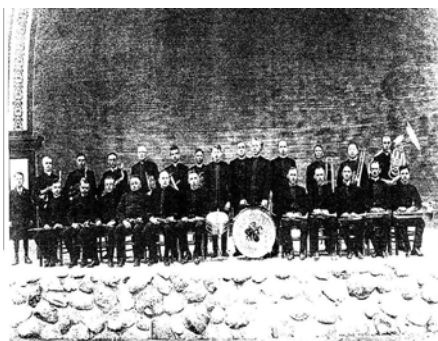
The band has been in continuous operation under various names since that time.

The band played in **1892** for the **placing of the time capsule** in the cornerstone of the **Riverside County Courthouse**.

The band duplicated that concert **ONE HUNDRED YEARS LATER** when the capsule was opened in **1992**.



*1905 Band Director Gustave Hilverkus  
Gustave then became the Orchestra & Band Director  
at Poly High School until he retired in 1939*



*1920 dedication of the Fairmont Park Band Shell*





The ensemble's musicians come from throughout the Inland Empire area

**Musicians range in age from 20 to 85.**

The musicians' average tenure with the band is **15 years**, with one-third having tenures of **20 years** or more.







RCB provides rehearsal and performance opportunities for musicians ranging from **high school students to senior citizens**.

We invite musicians to **"try us out"** ...

If you have three or more years of playing experience and enjoy performing concerts, the

**Riverside Concert Band is for you !**





*Riverside Concert Band at the Riverside National Cemetery*

Rehearsals are held at the Evergreen Masonic Lodge  
5801 Chicago Avenue on Tuesday evenings  
6:15 to 7:15 p.m. - Swing Ensemble  
7:30 to 9:15 p.m. - Concert Band



## Riverside Neighborhood Partnership

Board meets the  
1<sup>st</sup> Monday  
of the month.

Next meeting:

Monday, June 5, 2017  
City Hall – 7<sup>th</sup> Floor  
6:30-8:00pm

### RNP MISSION

engage with residents to promote  
and to support the creation of  
neighborhood groups to improve  
our local quality of life

[www.RNPinfo.com](http://www.RNPinfo.com)

