



NORTHSIDE SPECIFIC PLAN

AN INTERJURISDICTIONAL PROJECT OF THE CITY OF RIVERSIDE & CITY OF COLTON

ROUND 1 – VISION & GOALS

COMMUNITY INVOLVEMENT SUMMARY

June 16, 2017

Summary Contents

This summary contains the following sections that provide information about the first round of community involvement activities, including **Purpose, When and Where, Notifications, Attendance, and Format and Summary**, as well as any other considerations specific to each activity. The Major Themes section outlines big ideas received throughout the community involvement process.

	PAGE
1. Introduction	2
2. Major Input Themes	4
3. Pop-up Outreach	5
4. Community Organization Meetings	7
5. Community Workshops	12
6. Availability Session	16
7. Appendices	17-55

Prepared for:



City of Riverside
Planning Division
3900 Main Street
Riverside, California 92522

Prepared by:



RICK – Community Planning & Sustainable Development
5620 Friars Road
San Diego, California 92110



Kearns & West
3600 Lime Street, Suite 226
Riverside, California 92501

1. Introduction

Purpose

The first round of community involvement for the Northside Specific Plan (Project) process focuses on soliciting input from community members and stakeholders for the vision and goals of the Project. The first round consisted of a set of coordinated activities, including pop-up events, community organization meetings, community workshops, and a drop-in session with City planners. This summary documents the input received in the first round, and most importantly, provides major themes that synthesizes such input.

Community Involvement Plan

The Community Involvement Plan describes how the City of Riverside will engage the public in developing the Northside Specific Plan, an interjurisdictional project of the City of Riverside and City of Colton. The Plan establishes outreach and engagement activities, and shows how such activities synchronize with the planning steps in the Project. The success of the community planning process relies on involvement of community members, landowners, and other stakeholders in shaping and forming the vision and goals of the Project. Moreover, the City is committed to conducting a transparent, inclusive, and meaningful planning process, and this Community Involvement Plan provides the roadmap for public involvement in the Northside Specific Plan.

The Community Involvement Plan can be found on the Northside project website at www.northsideplan.com.

Objectives for the First Round

Activities of the first round of community involvement focused on the following objectives:

- Engage the full spectrum of Northside community members.
- Inform community members and other stakeholders about the Northside Specific Plan process.
- Share planning implications from the baseline studies and technical issues.
- Solicit input on vision ideas and topical goals for the Northside Specific Plan.
- Collect contact information for community members who are interested in receiving future project announcements and updates.



Activities

Activities for the first round of community involvement were selected to achieve a specific set of objectives, which are listed below in the “Round One Activities and Purpose” table.

Table 1.1 – Round One Activities and Purpose

Activity	Purpose				
	Invite People to Workshops	Collect Contact Info for Future Announcements and Updates	Create Interest and Engagement in Northside Specific Plan	Solicit Input to Inform Vision and Goals	Provide Engagement Options Outside of Workshops
Pop-Up Outreach	X	X	X	X	X
Announcements at Community Organizations’ Meetings	X	X	X	X	X
First Round of Community Workshops		X	X	X	
Availability Session – Talk with the Planners		X	X	X	X
Coordination with Owners of Land with Significant Development Potential	X		X	X	





2. Major Input Themes

Major themes represent big ideas and input that were repeatedly discussed in various settings. Below are six themes that strongly represent participant input. Importantly, understanding the breadth and depth of input requires reviewing the input, which is documented in the subsequent sections and appendices.

The themes are listed in alphabetical order, and therefore the ordering does not reflect any determination of prioritization or relevance.

Amenities, Services, and Infrastructure Improvements

Attendees highlighted the need for improved amenities, services, and infrastructure in the Northside neighborhood. Many comments addressed the need for grocery stores, while other comments included flower marts, food hubs, and other local shopping opportunities and services. Farmers markets were a common theme of discussion, and many suggested that these markets could sell locally farmed and produced food. Other comments highlighted the need for improved sewer connections in some parts of the Northside Neighborhood. Homeless services were another popular theme, and some attendees suggested that there were areas in the neighborhood that would be conducive to hosting homeless housing or services. Other comments highlighted the need to build a new middle school and high school to serve the neighborhood.

History of Riverside and the Northside Riverside

The Trujillo Adobe and related sites were focal points of discussions around historical assets in the Northside neighborhood. Attendees suggested that development around this area should include appropriately themed uses, such as uses that would facilitate educational opportunities, preservation, and celebration of historic settlements. Other historic sites discussed include the former power plant site in Highgrove, Roquet Ranch, and Pellissier Ranch. There was also discussion of the Northside's roots as one of Riverside's first neighborhoods, and how this can play a role in defining local character and culture, as well as establishing a unique, recognizable identity for the neighborhood.

Maintaining a Strong Recreation Component

Many attendees highlighted the importance of existing and future recreational opportunities in the Northside area, including activities at Reid Park, Ab Brown Soccer Complex, and the Santa Ana River Trail, among others. There were many suggestions to include hiking and biking trails both for recreation within the neighborhood and for connections with the Santa Ana River and other neighborhoods. The opportunity for continued use of portions of the former golf course to host cross country running events was also highly suggested. Other suggestions included development of a skate park, horseback riding trails, rock climbing facilities, and a dog park.

Open Space and Visual Character

Many attendees viewed open spaces and visual character of the neighborhood as a significant part of community pride, and emphasized that the low-density visual character of the neighborhood was a priority. A major focus was on the Springbrook Wash, including proposals to return it to its natural state and path. Other points of interests were community gardens and agricultural uses. Some attendees commented that trees and existing vegetation in the golf course area needed nourishment and care, while others suggested that the former golf course in its entirety, be left as open space. A number of attendees, however, mentioned that the absence of activity at the former golf course detracted from community cohesion. There was concern about the flood plain of the Santa Ana River, which extends into the neighborhood, and how to address land uses to accommodate the risk of flooding.

Safer streets and improved transportation options

Improved mobility for drivers, pedestrians, and cyclists, was a common theme. Many attendees proposed limiting truck travel in the neighborhood, especially along Columbia Avenue, due to congestion, safety, noise, and air quality concerns. Some highlighted the need for improved access to Interstate 215. Others asserted that improved sidewalks and traffic calming measures were needed to safely connect schools to residential areas. Connectivity to the Santa Ana River was also a popular topic of discussion. In this vein, it was suggested that a Metrolink station in the Highgrove area could provide improved regional connections.

Safety

A number of attendees expressed concern about neighborhood safety, and some suggested ways that it could be improved. Some recommended a potential site for a new police headquarters, and highlighted the need for improved lighting and other solutions to address the existence of homelessness and related crime in the area. Comments also addressed neighborhood safety and security concerns generated by some activities on La Cadena Drive.

3. Pop-up Outreach

Purpose

Pop-up outreach targets areas where community events and activities are already occurring and is a valuable tool for effective public engagement. The Northside Specific Plan Outreach Team conducted pop-up outreach at three different events in the Northside neighborhood prior to the first round of workshops. The purpose of these pop-up outreach events was to inform residents about the Northside Specific Plan and upcoming workshops, to gather feedback and engage residents, and to provide an opportunity for residents to sign up for notifications and updates.



When and Where

Table 3.1 – Pop-Up Schedules

Location	Event	Date
Fremont Elementary School	School Open House	Thursday, April 20, 2017
Reid Park	Little League Tournament	Saturday, May 13, 2017
Reid Park/Northside Neighborhood	Walk with the Mayor	Saturday, June 3, 2017

Notifications

Because pop-up events are hosted in partnership with existing community events, the team generally did not conduct pre-event advertising or notifications. The only event that the team promoted was the Walk with the Mayor event, which was advertised by the City through its website, social media channels, and community organizations.



Format and Summary

Below is a description of format and outcome for each pop-up event. Visitors to the booth were given an opportunity to explore a large map of the project area, and were given a copy of Newsletter No. 1 and a project information card. Comment cards were available to take home and fill out, or to submit at the event, and a sign-in sheet was available for attendees to register for future project notifications. Contact information for the City's Project Manager was also provided on various materials to facilitate direct communication.

Fremont Elementary School Open House

The Northside Specific Plan Project Team (including one Spanish-speaking member) held its first pop-up event at the annual Fremont Elementary School Open House, on April 20, 2017, from 5:30 – 7:30 pm. the event was hosted by the school's Principal, Shani Dahl, was open to all parents and students, and drew approximately 250 families who were longtime residents of the Northside, some of whom were Spanish speakers.

Team members greeted attendees and shared details of the Northside Specific Plan, and information about the June 7 and June 10 community workshops, and collected contact information for the project mailing list. There was a good level of interest as a total of 43 attendees requested further project updates and seven completed comment cards.

The team also conducted an activity, asking attendees to respond to two questions. A summary table of answers to these questions can be found in Appendix A. The questions were:

1. What are the top three things you value and appreciate most about the Northside Neighborhood?
2. What types of changes are needed in the next 20 years?

Reid Park Little League

The second Northside Specific Plan Outreach pop-up event was held on Saturday, May 13, 2017, from 9:00 am to 1:00 pm, at a weekend Reid Park Little League Tournament. The tournament attracted approximately 250 families.

The Team set up the pop-up station near the concession stand and the display included materials similar to the first pop-up at Fremont Elementary (e.g., large Northside Neighborhood/Project Area Map, copies of Newsletter No. 1, project information cards, comment cards, and sign-up sheets). The Team informed families about the Northside Specific Plan and how they could further participate by attending the June community workshops. The Beatty Elementary PTA president, who had been the outreach contact for the Team offered to share an overview of the project and materials with her PTA board members. The Project Team was able to talk to 18 visitors, four of whom signed up for future project updates.

Northside Walk with the Mayor

The Northside Specific Plan Project Team conducted a third pop-up event at Reid Park, in partnership with the Mayor's Office and the "Walk with the Mayor" program on Saturday, June 3, 2017, from 8:00 am to approximately 11:00 am. The event was promoted through the Mayor's Office website and the City of Riverside social media portals as well as by various neighborhood organization newsletters and Facebook pages, such as the Downtown Area Neighborhood Alliance, the Northside Improvement Association, the Springbrook Heritage Alliance, and the Riverside Neighborhood Partnership.



This pop-up event included an informational table, and team members from the City and the team participated in a three-mile neighborhood walk that included various points of interest and a tour of Fire Station No. 6 (See map, Appendix A).

Approximately 35 families participated, 20 of whom were interested in receiving project notifications and updates. Board Members from the Northside Improvement Association, also attended event and joined the Project Team in sharing information about the project with participants. Participants had the opportunity of visiting the pop-up station booth before and after the walk, and it appeared that the event provided them with a good forum to connect with one another. Project information cards were also given out to residents along the walking route, where appropriate, to help increase awareness of the project.

4. Community Organization Meetings

Purpose

In the weeks leading up to the June workshops, the Northside Specific Plan Project Team coordinated outreach with various stakeholder organizations by attending their standing monthly meetings in the Northside. The Project Team, provided a brief overview of the Northside Specific Plan project launch, purpose, process, and the role of community involvement to meeting attendees. The Project Team also announced upcoming community workshops, addressed questions, distributed project literature, collected mailing list contact information, and encouraged participants to share project information with their networks.

When and Where

Table 4.1 – Community Organization Meeting Schedule

Organization	Location	Date
Spanish Town Heritage Foundation (Trujillo Adobe)	Ruth Lewis Community Center, Reid Park, 701 N. Orange Street	Saturday, February 18, 2017
Riverside Neighborhood Partnership	Mayor's Ceremonial Room, 3900 Main Street, 7 th floor	Monday, May 1, 2017
Reid Park Advisory Team	Ruth Lewis Community Center, Reid Park, 701 N. Orange Street	Tuesday, May 2, 2017
Latino Network	Centro de Ninos, Bordwell Park, 2010 Martin Luther King Boulevard	Wednesday, May 3, 2017
Beatty PTA	Patricia Beatty Elementary School, 4261 Latham Street	Thursday, May 4, 2017
Northside Improvement Assn.	Ruth Lewis Community Center, Reid Park, 701 N. Orange Street	Monday May 8, 2017
Hunter Park Business Council/Greater Riverside Chambers of Commerce	Solutions Group, International, 1401 Research Park Drive, #100	Tuesday May 16, 2017
Springbrook Heritage Alliance	Ruth Lewis Community Center, Reid Park, 701 N. Orange Street	Thursday May, 18, 2017

Notifications

Because these activities took place as part of existing, scheduled community meetings, other than coordinating schedules with key staff, it was not necessary for the team to actively promote the events (e.g., publish notifications, social media etc.).

Attendance

Attendance at each meeting varied, and is reported in the summary of each event below.

Format and Summary



Beatty Elementary PTA

While Project Team was scheduled to provide a presentation on Thursday, May 4 to the school's monthly PTA meeting, the meeting was cancelled. The school secretary offered to take and distribute Newsletter No. 1 to the current and incoming PTA board members.

Project Team members met with the Beatty PTA president at Reid Park during the Little League Tournament on Saturday, May 13, 2017 and discussed the Northside Specific Plan and the possibility of attending a future PTA meeting during other phases of the project. The team provided the Beatty PTA President with program literature for distribution to her networks.

Hunter Park Business Council/Greater Riverside Chambers of Commerce

The INSIDE Hunter Park meeting took place on Tuesday, May 16, 2017 at Solutions Group, a local business in the Hunter Industrial Park Neighborhood. The Hunter Park Business Council is one of the Greater Riverside Chambers' of Commerce six geographical divisions and encompasses the Northside Neighborhood within its district boundaries.

The Project Team attended this event and provided the participants with a brief overview of the Northside Specific Plan project launch, purpose, process, and the role of community involvement. There were 37 participants at this event. The Project Team announced upcoming community workshops, addressed questions, distributed literature, collected contact information, and encourage participants to share project information with their networks. Meeting participants had the opportunity during the break to network with other participants and to discuss the project one-on-one with Project Team members present. The president of the Greater Riverside Chambers of Commerce was also present and shared that he had attended the Leadership Riverside 2017. He added that he and his class intended to attend a June workshop.

Latino Network

The Project Team met with the Latino Network on Wednesday, May 3, 2017 at the Nati Fuentes Centro de Ninos, Bordwell Park. The organization was established to provide a forum for the community to address issues impacting the Latino Community. Their monthly meetings generally feature programs relevant to the Latino community.

The Project Team attended this meeting and provided the 32 participants with a brief overview of the Northside Specific Plan project launch, purpose, process, and the role of community involvement in the



project. The Project Team announced upcoming community workshops, addressed questions, distributed literature, collected contact information, and encouraged further outreach to the City of Riverside community.

In response to a suggestion from a Latino Network leader, the Project Team emailed a variety of outreach materials to the Network's members, including Newsletter No. 1 and a bilingual, one-page workshop flier.

Riverside County Supervisor Kevin Jeffries was the featured speaker, and the City's Community and Economic Development Deputy Director Emilio Ramirez provided a status update on the Cheech Marin Center for Chicano Art, Culture and Industry proposed for downtown Riverside.

Northside Improvement Association

The Northside Improvement Association (NIA) meets monthly at the Ruth Lewis Community Center at Reid Park, and is the oldest neighborhood association in the City of Riverside, established in 1912. The NIA provides a forum and clearinghouse for issues affecting the neighborhood.

Project Team members attended the monthly meeting on Monday, May 8, 2017, and provided a brief overview of the Northside Specific Plan project launch, purpose, process, and the role of community involvement to the 23 participants. The team announced upcoming community workshops, answered questions, distributed literature, collected contact information for future project announcements, and encouraged the participants to do further outreach to their communities. In attendance were Mike Gardner, City Councilmember representing Ward 1, area police Sergeant Pete Elliott, and Assistant City Manager Marianna Marysheva. Participant questions focused on the proposed Guthrie project, located at the former Riverside County Transportation Commission (RCTC) property on Orange Street, adjacent to State Route 60. Questions addressed the current zoning at that location, the likelihood of the developer's eight-month timeframe for moving forward, and the City's Innovation District (a City initiative that aims

to incorporate sustainable mobility solutions into the Eastside Neighborhood). Councilmember Mike Gardner addressed these questions, emphasizing that the developer would need significant support from the community to move forward. He also reminded participants that the Innovation Zone is still in the conceptual phase and not yet a finalized plan.

The NIA Chairman stressed the importance of participant involvement as a factor in the progress of Northside Specific Plan process. During the discussion on outreach planning process, one participant offered to create a large posting for the upcoming workshop and place it strategically on his fence on Chase Street (See photo above) to draw attention to the effort.





Also of note, the Project Team was able to connect with the local Girl Scout troop leaders and their parents, who were at the community center for a separate event, and present them with a project overview and literature.

Reid Park Advisory Team

The Reid Park Advisory meets monthly and is comprised of volunteers involved with the youth sports programs at Reid Park. The group serves in an advisory role to the City of Riverside Parks and Recreation staff. Though the Project Team was not able to connect with this group at one of their meetings, connection was made with a member of the Reid Park Advisory Team, who is also a board member of the Northside Improvement Association, and who committed to serving as a liaison between Reid Park Advisory and the Project Team.

Riverside Neighborhood Partnership

The Project Team conducted outreach to the Riverside Neighborhood Partnership (RNP), a city-wide council of neighborhoods with representation from all neighborhoods, by attending their monthly meeting on Thursday, June 1, 2017, in the City Hall Mayor's Ceremonial Room. The mission of the RNP is to encourage the formation of neighborhood associations city-wide and to provide a forum for neighborhood concerns and community collaboration and mobilization. The City's Our Riverside, Our Neighborhoods (ORON) Initiative is implemented in large part by the RNP, and the RNP is staffed by the Community and Economic Development Department's Neighborhoods Programs staff.

At the meeting, Project Team members provided a brief overview of the Northside Specific Plan project launch, purpose, process, and the role of community involvement. The team also announced upcoming community workshops, answered questions, distributed literature, collected contact information for future project announcements, and encouraged further outreach to RNP-affiliated members and groups. One RNP member asked whether the current map in Newsletter No. 1 included a larger portion of the geographic area considered the Downtown Neighborhood.

Various comments, concerns and suggestions discussed by board members included:

- Everyone in the City should be involved; Riverside Public Utilities (RPU) serves the entire city and holds 39 percent of the property in the plan, thus it is the property, and the concern of all of Riverside's citizens.
- All print materials should be inclusive of all Riverside residents, and confirm that American Sign Language interpretation would be provided at workshops. This has the potential to increase attendance by making workshops more accessible.
- The concern that soccer fields might be used for commercial purposes, creating a negative impact on the environment, air, traffic, and infrastructure.
- The City and consultants be attentive to the needs and vision of those that live in the neighborhood.
- Inclusion of Riverside neighborhoods in the current Northside Specific Plan will create a positive precedent and blueprint of the Plan for other neighborhoods in the future.

There were 16 attendees at the meeting.

Spanish Town Heritage Foundation (Trujillo Adobe)

The Spanish Town Heritage Foundation is an organization whose mission is to preserve the Hispanic legacy of the Inland Empire's first settlers in the Northside Neighborhood, and to lead community efforts to restore and revitalize La Placita de los Trujillos and the Trujillo Adobe. The Project Team





was able to interview the group's leaders, who in turn offered to share outreach information through their email list, websites and Facebook pages. Further, during the month of May, the outreach team provided for distribution a workshop social media announcement, electronic versions of Newsletter No. 1, and a bilingual, one-page workshop flier for distribution to their membership.

Springbrook Heritage Alliance

Established in 2014, the Springbrook Heritage Alliance is dedicated to preserving the natural, cultural, agricultural, and historical places in and around the Springbrook Arroyo Watershed. The group meets monthly at the Ruth Lewis Community Center at Reid Park to discuss topics such as subject area specialists in community history and natural resources, and related to impacts the watershed and Santa Ana River area.

Project Team members attended the group's monthly meeting on May 18th, 2017. The Team provided the eight participants with a brief overview of the Northside Specific Plan project launch, purpose, process, and the role of community involvement. Additionally, the Team announced upcoming community workshops, answered questions, distributed literature, collected contact information for project announcements, and encouraged further outreach to the group's networks.

Some questions and comments included:

- How residents can access ORON program documentation.
- A request for the team to provide a presentation to the participants regarding neighborhood history at the workshops.
 - In response, the team clarified that the participants can obtain this information by visiting team members at the stations that are set up at the workshop.

In closing, the Team directed attendees to NorthsidePlan.com, specifically the Community Involvement Plan, where they could find all of the documentation for the Northside ORON initiative. Alliance members came away from the event with a commitment to help promote attendance at the Walk with the Mayor pop-up event.

Other Meetings by Invitation

Below is a list of additional meetings the outreach team attended and group members with whom the team engaged:

Friday, February 3, 2017 – Fremont Elementary School PTA meeting. Outreach team member attended at the invitation of the school Principal Shani Dahl to provide an overview of the Northside Specific Plan and encourage participation.

Wednesday, February 8, 2017 - Lunch meeting at the invitation of Karen Renfro on behalf of Springbrook Heritage Alliance. Project team members present: Brian Mooney and Eva Yakutis (Rick Engineering) and Joan Isaacson (Kearns and West).

Friday, May 5, 2017 – Presentation to Leadership Riverside by Rick Engineering at the request of Assistant City Manager, Al Zelinka.

Community Group Follow-up

- While members of the outreach team have met with the Principals at Beatty Elementary School and Fremont Elementary School, who are enthusiastic supporters of the outreach effort, future efforts might focus on engaging PTA groups at Highgrove Elementary and Beatty Elementary.
- Both the La Rivera Homeowners Association President and the Breezewood Apartments Manager have requested pop-ups for the next round of outreach.
- The City of Riverside Fire Department was receptive to the suggestion of holding a neighborhood event, such as a pancake breakfast or hot dog BBQ, at Fire Station No. 6. Arrangements can be made through the Fire Department Union President.
- The ORON Champions affiliated with the ORON initiative do not meet regularly, however, the outreach team could arrange to meet with them to obtain input regarding outreach ideas or for assistance.
- A future Spanish Town Heritage Foundation event may provide a good pop-up venue.
- A connection was made with a pastor of one of the neighborhood churches at the June 10 workshop, and outreach team will explore how church members can be better engaged.

5. Community Workshops

Purpose

At the heart of this round of the Northside Specific Plan process is a series of three community workshops. Interactive formats facilitated discussion of perspectives among community members and provided a space for them to work together in a step-by-step process to provide input. The project team also shared information from the baseline study and served as facilitators for hands-on planning activities.



When and Where

Table 5.1 – Community Workshop Schedule

Location	Date
Springbrook Clubhouse – 1011 N. Orange Street, Riverside, CA 92501	Wednesday, June 7, 2017
Fremont Elementary School – 1925 Orange Street, Riverside, CA 92501	Saturday, June 10, 2017

Notifications

As part of the notification process, pop-up events and community organization meetings provided a valuable avenue for notifying the community about dates and times for the first round of community workshops. The project team and the community also used other forms of notifications, as outlined below. Examples of postings can be found in Appendix C.

Attendance

For the June 7, 2017 workshop, a total of 52 people signed in. For the June 10, 2017 workshop, a total of 17 people signed in.

Table 5.2 – Community Workshop Notifications

Method
Northside Specific Plan Website – www.northsideplan.com
Email Announcements
Social Media Announcements
Electronic Freeway Signs
Announcements to City Council, Planning Commissioners, RPU Board, asking to extend the invitation regarding the community workshops
Press Enterprise Community Affairs Column
Announcement on Downtown Area Neighborhood Alliance (DANA) podcast/newsletter/Facebook page
Large banner at corner of Orange Street and Columbia Avenue
Grassroots notifications by community members

Format and Summary

The format for the first round of community workshops integrated an open house and breakout discussion groups. By sharing information and soliciting input using different methods, people with varying communication styles had opportunities to participate in approaches that they find comfortable and appropriate. Between open house and breakout discussions, attendees convened for a brief report from station leads on feedback received at open house stations.

In order to accommodate the Northside’s Spanish-speaking workshop participants, a number of team members were able to provide translation assistance at open house stations and in the discussion groups. Activities for youth and children were also provided by City Parks and Recreation staff, as well as refreshments to attract more attendees to the workshops.

What follows is a brief summary of the various community workshop segments.

Open House

Eight stations were set up with project team members as station leads to provide project information and to give attendees an opportunity to ask questions about specific aspects of the project. Each station had an area that allowed for attendees to post sticky notes with “Issues” and “Ideas, Solutions, and Opportunities” related to the Northside neighborhood. A table outlining the results of this activity can be found in Appendix B.

Each attendee was given a “passport” at registration, allowing them to record stations that they visited. These passports were meant to incentivize attendees to visit each



station, and were turned in at the end of the open house in exchange for a door prize raffle ticket. Examples of the passport can be found in Appendix C. The following table provides more details about the open house stations and their topics.

Table 5.3 – Community Meeting Stations

Station #	Station Name
1	Welcome to the Northside Specific Plan
2	Visual Character, Land Use, and Design
3	Mobility
4	Economic Development
5	Parks and Open Space
6	Historic Resources
7	Environmental Issues
8	Water Resources, Infrastructure, and Public Services

Breakout Discussion Groups

Upon signing-in for the workshop, attendees received randomized group assignments, signified by a number on their name tag. The purpose of this was to ensure a mix of perspectives were represented in each group. The group discussions proceeded in four steps, facilitated by a member of the project team. Below is an outline of steps and Appendix B contains summary tables that list the results of this activity.

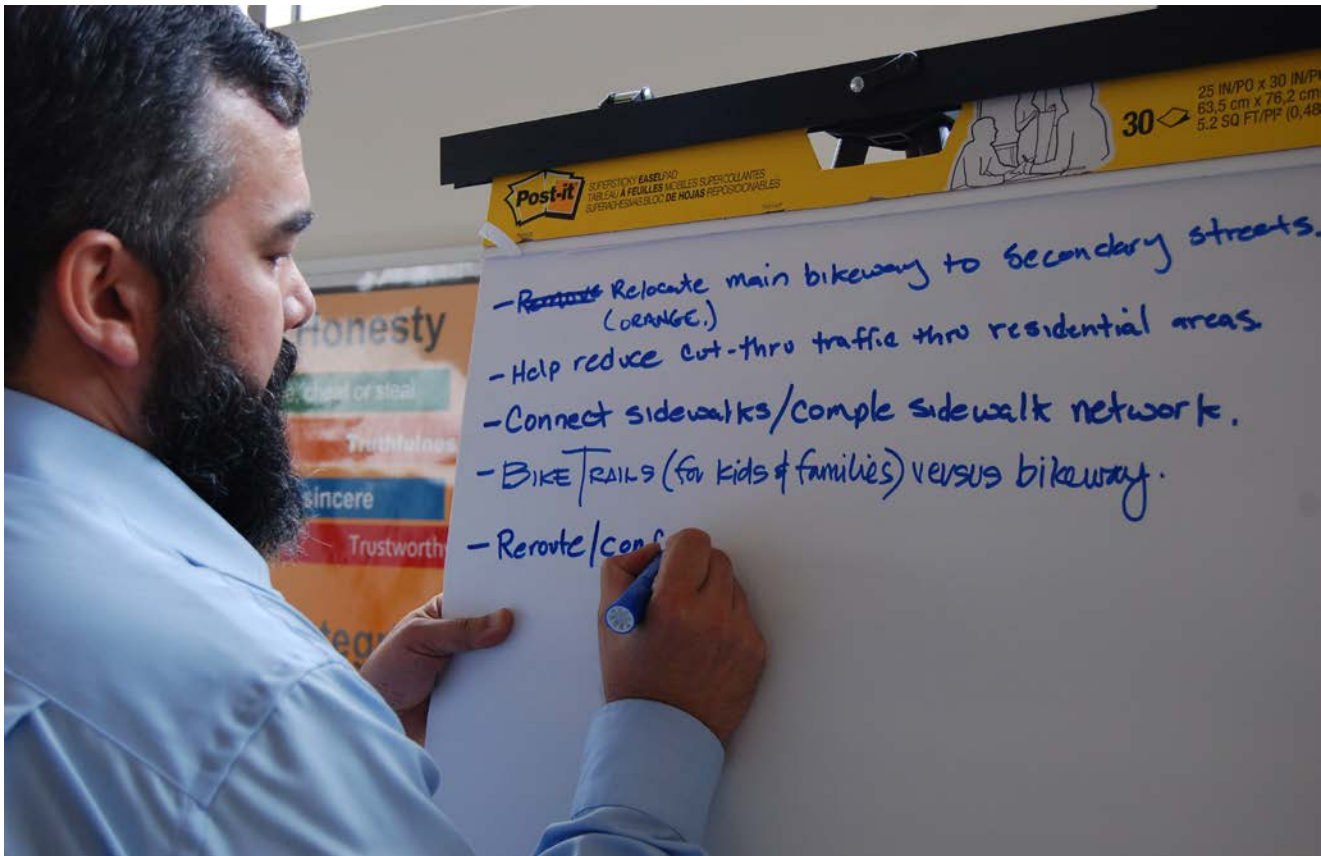
Step 1: Brainstorming “big ideas.” During the brainstorm, participants applied what they learned at the open house stations – and their knowledge of the Northside – what are big ideas to make the Northside a special place, in other words, changes, new places, and improvements that will add value for the community and property owners?



Step 2: “Dot polling.” Attendees participated in a “dot poll”, during which process they were given seven sticky dots and asked to identify the big ideas that they think are most important and valuable. At the end of the process, they were tasked with circling the top five big ideas based on dot count.

Step 3: Mapping big ideas. For each of the top five ideas, participants were tasked with leading a discussion about implementing the planning area idea using question probes and further developing the idea by drawing and making notes on a big map of the Northside area.

Step 4: Reporting Back. A community volunteer from each group reported back on the top five ideas identified by their group.



6. Availability Session

Purpose

During the week following the workshops, the planning team hosted an Availability Session at the Ruth Lewis Community Center at Reid Park. The purpose of the session was to allow people to drop in and ask questions, explore ideas, and provide input. This activity supplemented the two rounds of workshops.

When and Where

Table 6.1 – Availability Session Schedule

Location	Date
Ruth Lewis Community Center - 701 Orange St, Riverside, CA 92501	Monday, June 12, 2017

Notifications

Notifications about the Availability Session were made concurrently with notifications about the Community workshops.

Format and Summary

Team members set up project information at Ruth Lewis Community Center, and were available to answer questions from those community members who stopped by.





Appendix A.

FEEDBACK FROM POP-UP EVENTS

Responses to Questionnaire – Fremont Pop-Up

1. What are the top three things that you value and appreciate most about the Northside Neighborhood?

Comment	Frequency
Family, family neighborhood, community, neighborhood, smaller close-knit neighborhoods	5
Parks, the Park	4
Schools, good schools, teachers/staff	4
Proximity of schools	1
Safety	1
Open space areas	1
Downtown	1
Fairmount Park	1
A few places to eat	1
Soccer complex	1
New cross country course (CIF)	1

2. What types of changes are needed in the next 20 years?

Comment	Frequency
Roads, freeways	3
Fix it up, fix up Fairmount, improved appearance of Main Street as entryway to downtown	3
Better pick-up/drop-off schools, school parking	3
Shopping and grocery (Target, Walmart, fast food), shopping centers	3
Rec Center with after school programs, more kids activities, Recreation (soccer, boxing, baseball)	3
Restaurants	2
Safety	1
Hotels	1
Public services	1
Open space (pastoral beauty of old golf course)	1



Appendix B.

FEEDBACK FROM COMMUNITY WORKSHOPS

Open House Station Feedback Transcription

Station 1: Welcome to the Northside Specific Plan

Sticky Note Answers to “Why I love the Northside”

Answer	Frequency
Open space	11
Trujillo Adobe and La Placita, history	6
Parks, Reid Park	6
Trees, mature trees	4
Schools	3
Fire station	3
Nice area to love and raise your kids, family oriented	3
Cross country events, soccer, sports facilities	3
Lots of open space and potential	3
Peace and quiet	3
No traffic in my neighborhood, quiet streets	3
Good access to freeways	3
Hills, topography	2
People’s ability to change, renewal	2
Santa Ana River proximity and access	2
Friends, the people	2
Birds	1
Roosters	1
Diversity	1
Heart of the Inland Empire	1
Near downtown	1
The complex where I live	1
Mix of uses make productive use of land (commercial, industrial, retail, residential)	1
Potential for live/work development	1
Breezewood	1
Touch of rural	1
Have lived here all my life, this is home	1
North High School Football	1
Trujillo ditch – cheap water close	1
Soccer fields	1
Old golf course	1
Prime soils for agriculture	1
Need community garden	1
Fruit growers co-op	1
Don’t like factories and industries	1
“Way North” is great for industry	1
Can walk to park and play	1



Answer	Frequency
Connection to Santa Ana River Trail	1
Changes good but traffic is terrible	1
No heavy traffic	1
Access to other cities	1
Metrolink station needed	1
Trains	1

Station 2: Visual Character, Land Use, and Design

Sticky Note Input

- Access to Trujillo water supply, city owned
- Center St. corridor historically themed
- Recreation of La Placitas de los Trujillos – Trujillo Adobe, Trujillo School, working farm, arts, entertainment, community services
- Community center (x2)
- Community health delivery
- Cross-country trail
- Keep cross-country in conjunction with park area
- Bicycle transportation
- Off-road trail parallel to Spring Brook arroyo
- Trails
- Sand lot/use for park purposes
- Study area, library, kids center, computers for homework
- Would like to see some improvement on La Cadena – sidewalks, trees – but nothing that will bring too much traffic (like sports complex or cross country)
- Add neighborhood farm co-op to old golf course
- Develop parts of golf course to urban ag and use as a farmer training site
- Potential revitalization area should be left empty and used for agriculture
- Build community by development of community gardens
- Start a large community garden
- Old golf course should become a natural area
- Open space of Northside (golf course) is visible from 7th floor CH – very nice
- Air quality mitigation via greenspace
- Preserve large trees
- Preserve open space character
- Don't feel safe walking around, a lot of homeless
- Grocery store
- Grocery store, bank, pharmacy
- Grocery store, like a Stater Bros.
- Need grocery store
- Need Stater Bros. or Ralphs
- Have a discussion on what a typical grocery store or restaurant – use as a decision-making criteria
- Highgrove Metrolink station needed on east side of freeway
- Hooray – “Constraints Map” shows heavy industry – good!
- Opportunity for smart planning is exceptional – housing, services, education



- Like Barcelona, with night restaurants, retail, bars
- Live/work/play community – this area can be the best of Riverside
- Expand innovation district
- Low impact development
- What will generate middle class jobs for local residents? Retail – not likely, industrial – probably
- No homes in golf course area, maybe business on Riverside Ave. side
- Make Pellissier a commercial/Distribution Center/light manufacturing area and try to confine truck traffic to industrial parks
- No industrial
- North Main St. corridor good, Columbia not so much residential
- Potential mixed-use center #4 – the area begs to be opened to heavier industrial uses, where else in Riverside?
- Residential on second floor, commercial on first floor
- Smart affordable, not worse
- Use smart growth concepts – live/work buildings
- Local street/bridge maintenance and cleanup

Project Team Flip Chart Notes

- Family activities, movies at the park (Reid Park) (x2)
- Park or mini center good for golf course
- Center Main, Columbia, cross-country (x2)
- Parking issues during cross-country meets
- Keep golf course as open space
- Support trails
- Keep empty land empty because it is the highest and best use
- Community gardens
- Agri-tourism, dairy farm
- Small organic farming with food stands – farm-to-fork restaurants
- Grocery store needed
- Small stores for groceries
- Shopping and dining
- No strip mall & warehouses
- No more apartments
- No more industrial
- Inconsistent General Plan land use and zoning
- Publicly owned land, publicly zoned
- North Main Street re-purpose
- Crime

Station 3: Mobility

Sticky Note Input

Issues

- Beatty Elementary on Strong – sidewalk issue
- Fremont Elementary – No sidewalk along Strong, Strong being used as cut-through for ramps



- Beatty Elementary, Strong St traffic going too fast
- Truck vibrations are causing structural damage to homes
- Roads in need of repair
- Traffic backing up off freeway ramps, people get off Columbia and use Strong St
- No center median past Bartlett is good for existing businesses, leaning towards heavy industry, don't change!
- Main Street – high speeds, lack of protective crossing for bus drop-offs (school, city)
- Orange St no sidewalks in front of community center, heavy traffic speeding
- Columbia Ave. traffic
- Too much truck traffic, causing ruts in the roads
- Entrance to freeway off Columbia is congested

Ideas

- More sports events and running on old golf course land
- Sports complex for kids
- Library
- Whole market
- Add supermarkets
- Add grocery store
- Stores – the new Family Dollar gets a lot of business, need another market nearby
- Create live/work/play community so traffic will not need to drive so far for services/work/play
- Strong Street – traffic mitigation to slow down traffic
- Stop the trucks entering Northside on Columbia
- Stop trucks on Columbia
- Open Main St to trucks
- Add sidewalks in areas with no sidewalks
- Add protected crosswalks
- Provide pedestrian pathway connecting neighborhoods to each other and to schools
- Show existing pedestrian sidewalk in Reid Park & other circulation connection opportunities
- No children cross to Fremont
- La Rivera – better sidewalk connectivity
- Need trails to get people out of cars – walking, bicycling, golf carting!
- Strong/America St. – add stop or speed bumps
- Columbia Street/Orange – Sidewalks, widening, Columbia ramp improvement
- Benches for buses, sidewalks, curbs
- Slow/stop/limit development and traffic
- Add overpass for train on Chicago Ave.
- Upgrade ramp intersection
- 60 off-ramp – look for opportunities to increase efficiency
- Pocket style
- Columbia needs to have 2 lanes in each direction for entire stretch
- Move Fremont away to another parcel to move away from commercial/traffic
- Repair and maintain streets and roads
- Volunteers for cleanup, make our city cleaner



Project Team Flip Chart Notes

- Volume/speed of trucks on Main, between Columbia & Carter
- Potential center divider constraint at Main/Center (median)
- Difficult access at La Cadena ramps
- Ramp meters causing gridlock
- Main/Barkwood – many accidents
- Speeding on Strong between Orange & Main (speed bumps)
- Lack of sidewalk continuity
- Metrolink stop at Highgrove
- Bus stops desired at Thorton/E La Cadena and Marlborough/E La Cadena
- More greenery to help with emissions

Station 4: Economic Development

Sticky Note Input

- Simple help setup for homeless
- Help the homeless find residence
- Industrial land for Pellisier Ranch is highest value. Could create a landscape/park buffer between industrial and residential.
- The extreme north side, adjacent to Colton and north of Gardener and west of Orange, should be re-zoned heavy industrial - Riverside has too many restrictions on businesses
- Market potential recommended product types. PLEASE! Consider heavy industrial north of Garner + West of Orange. “Flex space?” Really?
- Community should look to work with industrial developers by supporting development in exchange for open space in a proposed project
- No warehouses that bring traffic + air pollution
- Non-durable goods
- Food processing
- Commercial kitchens
- Grocery market.
- Northside needs a grocery store!
- Grocery store
- A SMALL grocery on the old golf course at Columbia and Main
- Market garden to serve local food movement
- High SNAP population, more healthy food access
- Develop-create La Placita de los Trujillo Adobe – including Trujillo school, cantina, church – to generate cultural tourism and bring needed services to the community, i.e. grocery store, bank, pharmacy
- Expand into a brewing district incubator
- Target, Marshalls stores
- Small-small office spaces, e.g. insurance agents
- Police HQ (x2)
- Need a mobile police station
- More police
- Include agriculture in any residential development, agri-hoods are becoming very popular



- Need agriculture, local food processing, and farmer training
- What are the plans for the open space in front of Fremont – Orange St?
- Sewer put in on Main St. all the way to Placentia, but no access to landowners north of Garner
- Need better + encouraged truck access to Main St. via Center and Placentia – will reduce truck impacts further south towards Columbia
- Need infrastructure before any development
- Market speculation for industrial may be strong but empty buildings all over need to be used first

Project Team Flip Chart Notes

- Homeless/low-income services/housing
 - Volunteer credit cards
- Industrial most value
- Industrial/manufacturing would employ technical/RCC people
- Too much industrial – empty warehouses
- No more industrial warehouses
- Retail and industrial need
- Focus industrial @Pellissier Ranch
- Retail would employ younger adults
- Retail services – dry cleaning
- Village concept like Riverside Plaza
- Residential potential, but low values
- More single-family homes
- No demand for high density development/residential, only single family
- Medium to low income residential would house younger adults and technical/RCC people
- Grocery store needed
- Grocery Store
- Ice cream shop @gas station 1st and 2nd street
- No Walmart
- Garden nursery
- Market garden / farmers market
- Create farms to allow local businesses /UCR/RUSD to buy produce
- Agriculture – working farm/community gardens – agri-hood
- High traffic, heavy congestion on Columbia
- Improve streets/infrastructure/sidewalks
- Reduce speed limits
- Marketing is key to developing area
- Northside needs an identity
- High school



Station 5: Parks and Open Space

Sticky Note Input

- Shaded areas in park
- Park use access to/from events away from Orange
- Community Garden would build community + help with crime
- Please preserve the riparian corridor for wildlife + nature plants w/tracts outside of waterway
- Homeless encampment Santa Ana River
- Like Santa Ana trail but need loop connections into community
- Mount Rubidoux
- More parks with trails
- Please water the nature trees @golf course + design to preserve them
- Take care of trees
- Love the cross country track
- Parks off of trail for park-to-park
- More sports fields with skate parks / landscape themes
- Open space maintain/expand
- Make the Arroyo Trail running back to the Santa Ana Riverbed with trees, shade, rocks
- Park with walking trail
- Small urban farms
- Live/work
- Exercise
- Livable community
- Fairmount Park - maintenance, clean and well-lit
- Lights stay on after hours
- Soccer resource is great
- Police resources in area
- Open space with/for innovation – carbon financing
- Community gardens
- More soccer fields, trail
- Preserve prime soils for agriculture
- Do something like cross country events
- Outdoor music venue, plays in the park
- Sports field
- Well-kept park amenities
- Trail – went from Highgrove
- All open land on or near the flood plain should be park/open land! (not warehouses as planned)
- Theatre for children
- Interactive educational park combined with senior activity
- Perimeter fencing and security
- Trail connecting to neighborhoods from Santa Ana River
- Parks – well-lit an maintained
- Walking trails from park to park



- Cross country track
- Police HQ (x2)
- Neighborhood farming
- Skate park
- High density – live next to park
- Bicycle routes to connect to park
- Cross country
- Trails
- Water features within parks
- Create walking trail from Santa Ana River to Trujillo Adobe
- Walking trail with golf course
- Multi-use @Reid Park retain
- Historic park – Trujillo house
- Tamales fest – April
- An exciting bike trail connecting Downtown w/ golf course, then have some challenging loops, woopsies, etc. at the golf course. A reason to go Downtown and a reason to ride to the golf course!
- Working farm along the Santa Ana river adjacent to Trujillo Adobe - educational, historical, productive
- Special event area for community events
- Not enough parking for new projects
- Homeless migration through existing neighborhoods
- Homeless in Fairmount Park pushing kids out
- Bicycle route – Orange avenue preferred
- Park lighting & security
- Trail access end of Center St. (gate) signage
- Control traffic + parking
- Reid Park sports, multi-use – retain/expand
- Multi-use parks
- Dog park area /fenced

Project Team Flip Chart Notes

- Existing bike trails not well maintained
- Retain multi-use parks
- More parks, better lighting/safety
- More trails in community / sidewalks
- Incorporate a dog park/fenced
- Water feature, like Fairmount Park (homeless)
- Community farming / working agriculture
- Historic park around Trujillo house area
- Loop trails / regional connections
- Retain special events – cross country example
- Like pocket park concepts



Station 6: Historic Resources

Sticky Note Input

- I think Adobe is important
- Jim Wood has lots of historical knowledge
- Develop historical sites trail and create educational/interpretive info and signage throughout the community – create a “sense of place”
- Talk to schools to make partnerships for history education.
- Walking tour of historical resources
- Adobe
- The few but important sites, Trujillo Adobe, power plant site Highgrove, Elliotta, canal routes, must be saved
- Correct street names
- Historic surveys needed
- Roquet Ranch, City of Colton
- Preserve history
- Preserve resources
- Educate the neighborhood about the historic spots
- Use as educational resources (cultural resources) and close-range field trips
- Marborough – lack of restaurants and grocery
- Food manufacturing
- Food packaging
- Tortilla factory
- There was a school @Pellissier
- Orange was La Placita (Pellissier)
- Town in 1844
- Flood in 1862
- Agua Mansa/cemetery
- Settled originally at Bunker Hill
- Don’t like warehouse at Adobe school
- Historic canal filled in
- Riverside upper canal
- Riverside lower canal

Project Team Flip Chart Notes

- Preserve history
 - Open adobe
 - Village concept
 - Historic education
 - Trails/linkages
 - Spanish/Hispanic/Native American settlements
 - Ag history and modernize opportunity (farming)
- Recreate hot springs
- Cultural center around Adobe – continue Latino culture sharing



- History of early farming
- Adobe preservation (Like Jense Ranch in Rubidoux)
- Linking historic Old Spanish Trail with other trail networks
- Dairy history
- Preserve historic resources
- Educate the neighborhood
- Restoration inspired by Native American use of site
- Opportunity to recreate
- Tie in with Hispanic arts in Downtown
- History of area and how to rebuild a more modernized urban agriculture industry
- Potential presence of history and pre-history level of detail in Roquet Ranch analysis
- Open up adobe to be visible
- Clusters of historic resources identified
- Guidebook/walking trail of historic resources
- Education program for schools re: historic
- Importance of preserving history
- Presence of Historic resources – don't build over them
- Educate
- Restore
- Opportunity to develop around resources
- Historic canal routes
 - Riverside upper and lower canal
- 1862 flood
- Agua Mansa and La Placita
- Concern re: placement of warehouses over/on historic sites
- Trees /gardens, community gardens
- Inspiration from Old Town San Diego
- Opportunity to share history and culture
- Restore Adobe, recreate school, cantina in proximity to Adobe
- Working ranch, grow same food
- "Spanish Town Road" is now Orange Street

Station 7: Environmental Issues

Sticky Note Input

- Historical sites – Trujillo Adobe, Trujillo School, San Salvador Church, cantina
- Archeological study
- No warehouses
- More agricultural, i.e. nurseries
- Need for grocery store
- Develop solution for existing industrial sites
- Avoid factories near residential areas
- No warehouses that pollute the air



- Develop Pellissier area for commercial, and have developers pay for building the (lack of) sewers and infrastructure
- More trees
- Police HQ (x3)
- Bike lanes
- Bike trails
- Hiking trails
- Walkability
- Public transit
- Metrolink station needed on RCTC's property at Highgrove
- Skate park (x2)
- Solar
- Septic tanks polluting groundwater
- No high traffic between Riverside Ave. and Orange Street
- SMOG issues with traffic
- Traffic – health risk and impact on school children
- Avoid development that creates traffic! (most streets already at limit of use)
- Sorry – but traffic is a good indicator of a strong economy. Proper traffic routing away from residential areas more practical
- Health risk
- Clean trash on Placentia
- Composting/healthy soils
- Provide an adequate buffer adjacent to the water way, and design trails outside of restored habitat
- Undeveloped land as a natural resource (soil and hydrology) are best and highest use for now and future generations
- Preserve the blue line stream as habitat for future city mitigation needs
- Constructed wetlands
- Design around mature trees
- More natural landscapes to absorb SMOG
- Preserve prime soils for agriculture and food security

Project Team Flip Chart Notes

- Pellissier developed commercial – pay for infrastructure
- Develop solutions for existing industrial
- No warehouses (x2)
- More agriculture and nurseries
- Address lack of community amenities (grocery, etc.)
- Grocery store
- Live/work/play
- Urban agriculture
- Gateways – Beautification
- Area C to remain floodplain
- Golf course as passive/natural park
- Preservation/restoration, Springbrook Arroyo – buffers



- Preserve mature trees
- Constructed wetlands
- Preservation of Trujillo Adobe
- Protect and enhance Trujillo Adobe
- Sewer extension (Chase/Clark)
- More trees
- Illegal dumping
- Heath risk assessment (air quality)
- Save Springbrook heritage areas
- Traffic issues!!!
- Police HQ (Orange/Columbia)

Station 8: Water Resources, Infrastructure, and Public Services

Sticky Note Input

- Avoid construction on HUGE floodplain (old golf course, etc.)
- Require/subsidize sewer connections
- Leave areas open for flooding
- Chase Street sewer hookups – “No more septics”
- Development restrictions within levee protected zone and floodplain
- No construction on floodplain
- Restore natural water flows
- Require low-impact development to help replenish aquifers and reduce pollutants reaching water
- Keep development out of flood zone
- Improvement on sewers on older homes – eliminate septic tanks
- Preserve the Springbrook tributary to the Santa Ana River w/habitat, trails and interpretation
- Create buffers that intercept runoff from development, especially agriculture and gardens
- City assistance for sewer connection
- Plant and manage mature trees that help mitigate for climate changes
- Trujillo water is here
- Corner of Columbia Ave. and Kearney St. gets flooded every year with rain
- Trujillo Water Company re-vitalized for use in an educational working farm adjacent to Trujillo Adobe
- Glen Ivy Hot Springs
- Water Quality

Project Team Flipchart Notes

- Use water features as a part of the community
- Hot springs
- Local flooding on Columbia and Turley
- Lack of drainage infrastructure
- Resolution by the City to recurring floodplain issues
- Use Trujillo Water Company for agriculture uses around the Adobe
- Channelization of area around Orange and Placentia for storm protection



- Trash and debris in old natural waterways
- Groundwater quality
- Drinking water quality (fluoride, other chemicals)
- Trujillo Water Company
- Historic convergence of Santa Ana and San Jacinto River
- Identified as “Willows” on historic city maps as wetlands
- Levee concerns for potential future flooding

Breakout Group Brainstorming and Dot Polling Feedback Transcription

Wednesday, June 7, 2017

Group 1

Feedback	Dot Frequency
Street planned to mitigate traffic issues, Columbia/91 freeway onramp/traffic signal, truck traffic, Columbia/E. La Cadena and Center/Main Streets traffic issues	6
Septic tank conversion	6
Dedicated bikeways and trails	5
Homeless solutions	5
Sports complex and golf course as a venue for variety of uses – theater, renaissance fairs, historical reenactments	5
Protect natural resources and undeveloped land, Springbrook wash	4
Maximize connections to Santa Ana River Trail	3
Pedestrian crossing at Santa Ana river at Riverside Ave, and breakdown lane and lighting	3
Preservation of the adobe and associated resources	2
Community gardens	2
Controlled and reasonable development of retail, residential, commercial, have a design theme (Spanish town design theme)	1
Expand and embrace sports identity	1
Need safe walkways on bridges	1
Electricity for the annexed neighborhood	0
Tiny Houses	0
Emergency call boxes	0
Clean-up group	0
Family dollar store busy, need more stores	0



Group 2

Feedback	Dot Frequency
Police headquarters	9
Reduce truck traffic	4
Strategically placed market/retail	3
Small lot urban farming	3
Walking oriented	2
Keep community natural	2
Access to healthy communities	2
Workforce development	2
Police/security	1
Greenery	1
Adaptive re-use of north Main Street	1
Mass Transit	0

Group 3

Feedback	Dot Frequency
Sidewalks on Strong to elementary schools (Fremont & Beatty)	6
Metrolink station in Highgrove – RCTC property	4
Better freeway access without limiting employment generators	3
Economic drivers that come from industrial uses	2
Find balance between land uses	2
Grocery store	2
La Placita – strong sense of pride, themed development that matches history, compatible development	1
Parks/hills and open space	0
Traffic relief	0
Improved sewer access	0

Group 4

Feedback	Dot Frequency
Preserve open space/park, parks at golf course, mitigation opportunity for developers to fund bio/hydro enhancements	6
Bonaminio Park	5
Sidewalks on Strong, by schools	5
Retail at Columbia/Main	4
Trujillo preservation	4
Police headquarters (min 2 acres, parking)	4
Concern with interchange at Commercial	2
Realign Springbrook through golf course	1
Agriculture	0



Group 5

Feedback	Dot Frequency
Trail connections, connections to community sites and parks	7
Live, work, and play	6
Trail Cross-country track/multi-use	5
Create a place where people want to be/plaza	5
Walking trail internal/external/horse/bike	5
Community gardens with community involvement	4
Security, lighting, and safety	3
Be with people, walking, and biking	2
Hot springs opportunity	2
Urban/community farming	2
Maintain open space with trails (golf course)	1
Santa Ana river – opportunity	1

Group 6

Feedback	Dot Frequency
Preservation/promotion of agriculture, rural land, open space	4
Live, work, and play – walkable and consolidated services	3
Move Fremont Elementary	2
Farmers markets, smaller grocery stores	2
Nodes of development	2
Santa Ana River homeless tents feel unsafe, need a better connection to the community	2
Greater sense of place	1
Street trees, large sidewalks	1
Comprehensive zoning, understanding people are living in industrial zones	1
More affordable housing	1
Workforce housing	1
Small rural feel	0

**Saturday, June 10, 2017****Group 1**

Feedback	Dot Frequency
Trail connections between historic sites, open spaces, Santa Ana River, etc.	9
Sense of place, community identity, building off historic and environmental elements – sports, historic, and outdoorsy –water (Springbrook, Santa Ana River), rocks, sports, trails, Trujillo, soccer fields, sports	8
Food hub, with permanent farmers market, both locally grown and from Los Angeles; flower mart	7
Homeless solutions, several encampments	6
Outdoor amphitheater, possibly at park	5
Area around Trujillo Adobe – educational and cultural tourism destination, retain rural character	5
Monument “gateway to Northside and neighborhood” signage	3
Wayfinding, historic resource signs, points of interest	2
Restrict land use and zoning re big boxes, no big boxes or warehouses	2
Public owned/zoned land should stay public	1

Group 2

Feedback	Dot Frequency
Agriculture	5
Community farm	5
Skate park	4
BMX facility	4
More security/police presence	4
Grocery store	4
New high school in Northside	3
Rock climbing/park amenities for adults	3
Lights at parks	2
Placentia/North Main Street traffic calming	2
Dog park	1
Speeding issue/too much truck traffic, especially on Columbia	1
Expand community center	0
Farmers market	0
Traffic calming	0
Housing	0
Senior center	0
Shopping	0



Breakout Group Map Images

Wednesday, June 7, 2017

Springbrook Community Center

LEGEND

- City Boundaries
- Northside Study Area
- Potential Specific Plan Area

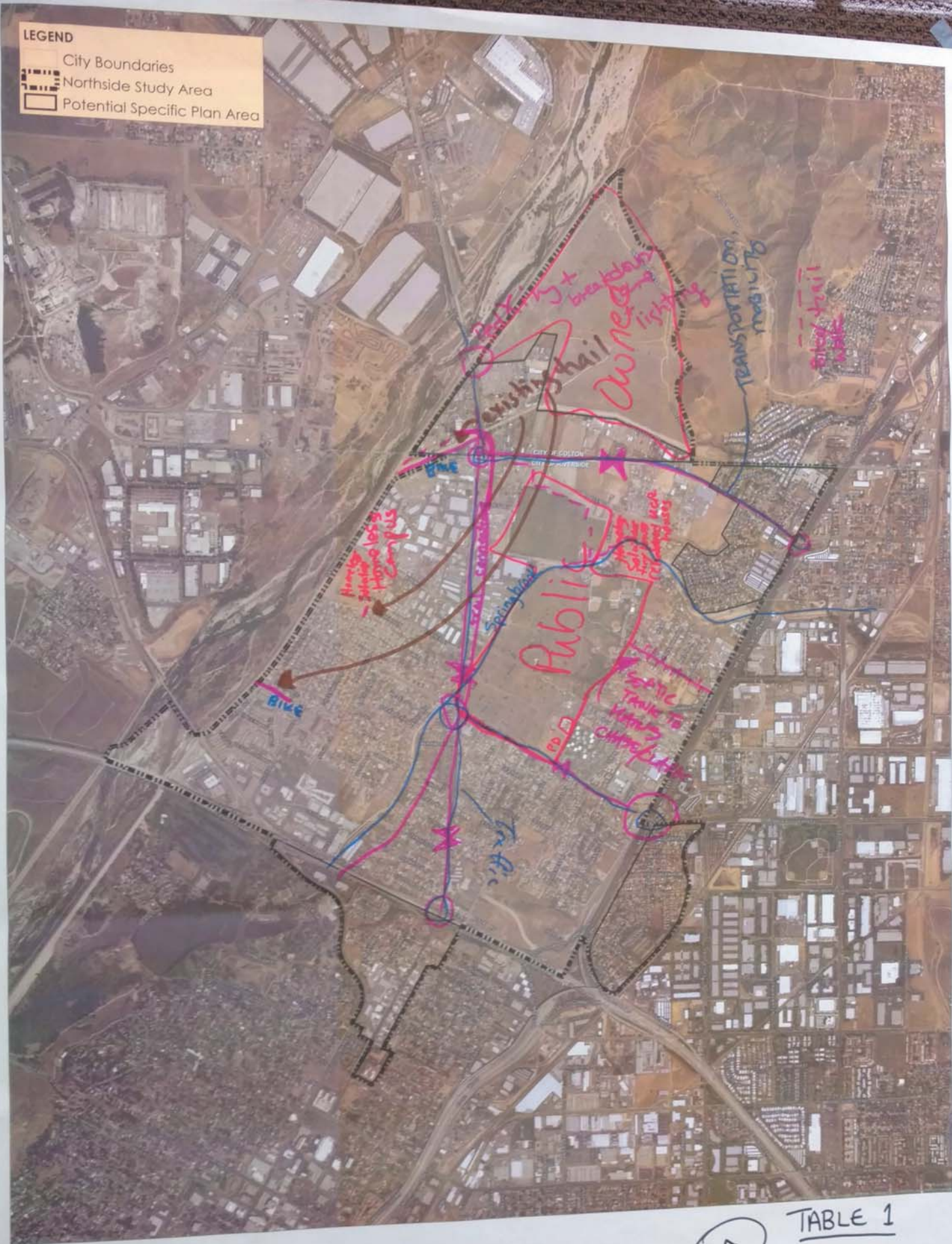


TABLE 1

EVA

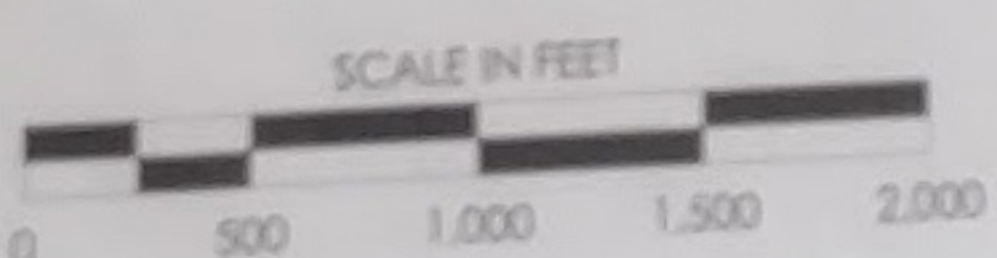
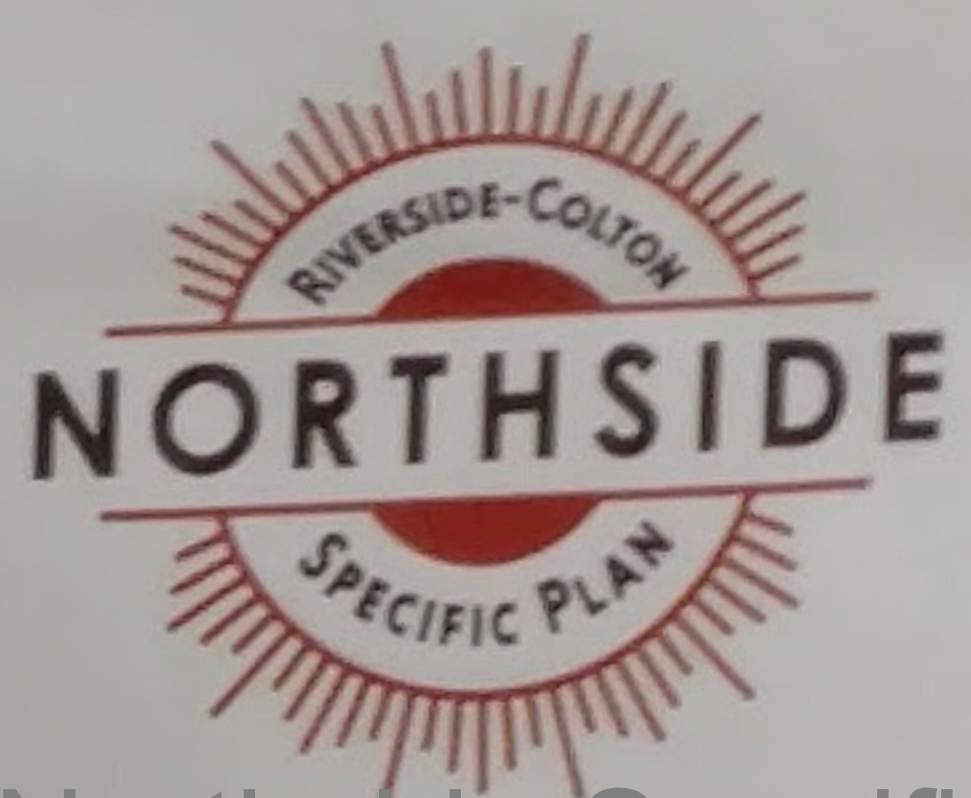
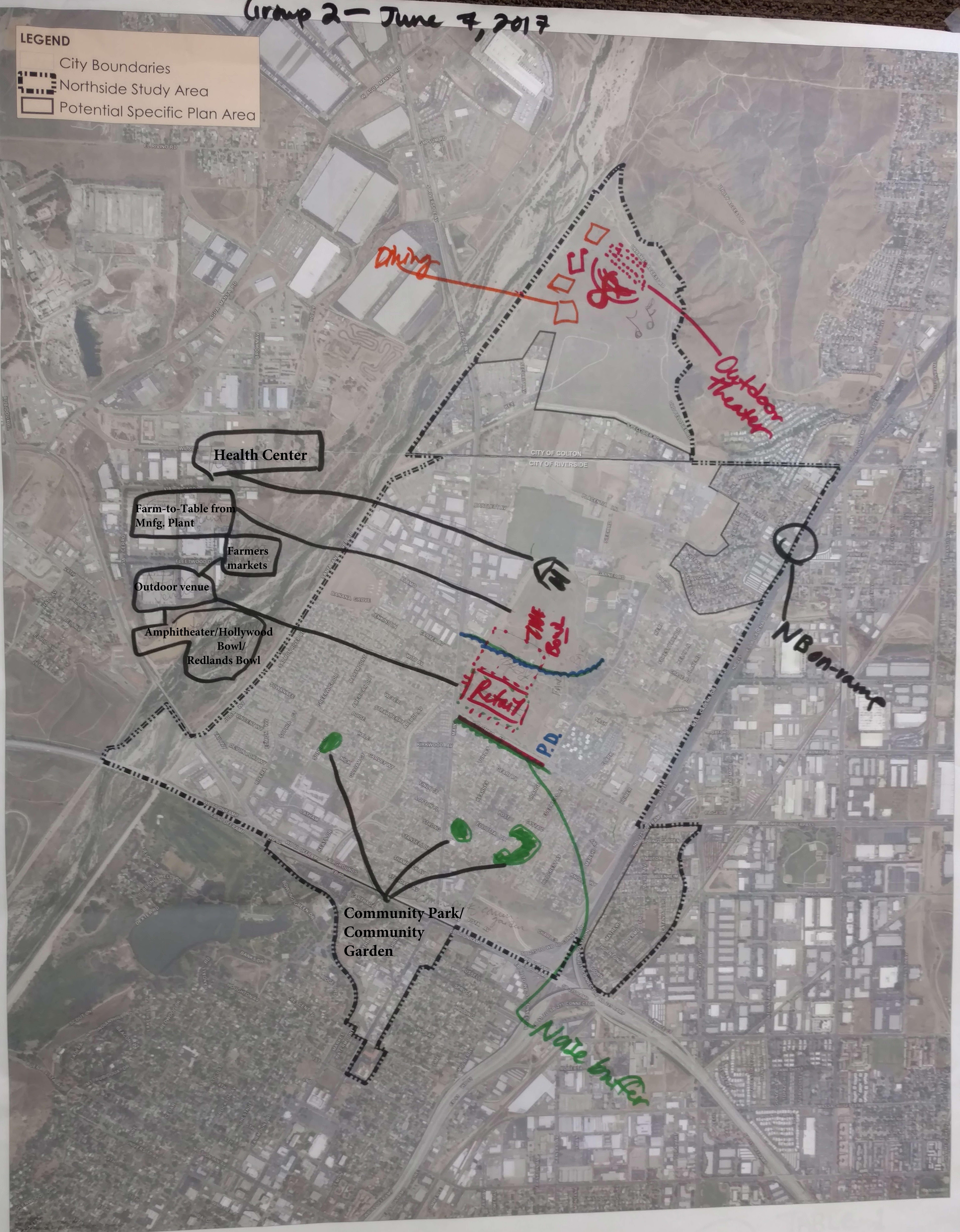
Study Area Map
NORTHSIDE SPECIFIC PLAN



Group 2 - June 4, 2017

LEGEND

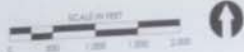
- City Boundaries
- Northside Study Area
- Potential Specific Plan Area



Study Area Map
NORTHSIDE SPECIFIC PLAN

City Boundaries
Northside Study Area
Potential Specific Plan Area

TABLE 3

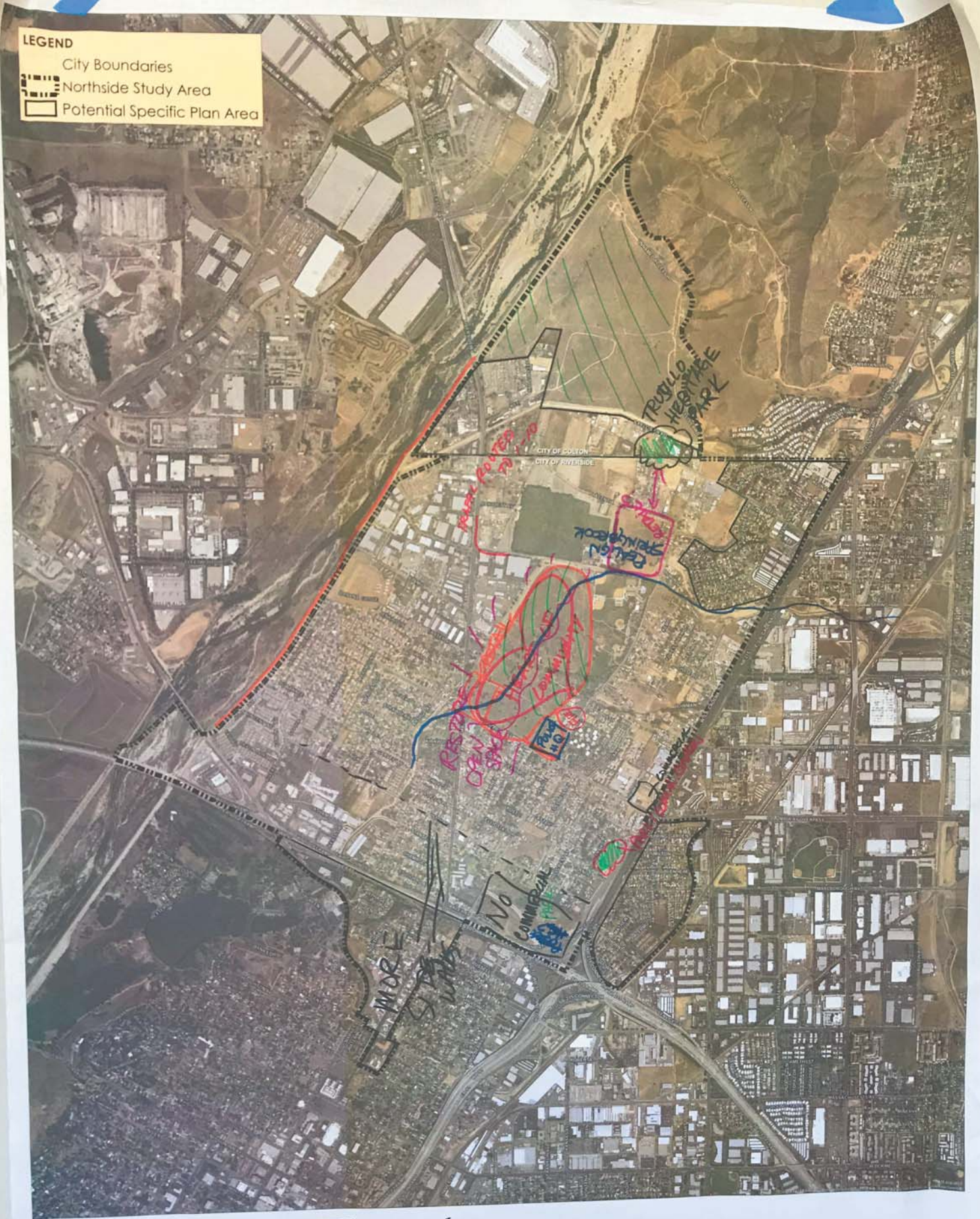


Study Area Map

NORTHSIDE SPECIFIC PLAN

LEGEND

- City Boundaries
- Northside Study Area
- Potential Specific Plan Area



RICK
ENGINEERING COMPANY
Community Planning & Sustainable Development

TABLE 4

SCALE IN FEET
0 500 1,000 1,500 2,000

↑

Study Area Map
NORTHSIDE SPECIFIC PLAN

LEGEND


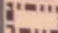
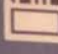
-  City Boundaries
-  Northside Study Area
-  Potential Specific Plan Area

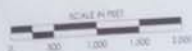


Table 5

Study Area Map
NORTHSIDE SPECIFIC PLAN



RICK
ENGINEERING COMPANY
Community Planning &
Sustainable Development



LEGEND

- City Boundaries
- Northside Study Area
- Potential Specific Plan Area

TABLE 6



Study Area Map
NORTHSIDE SPECIFIC PLAN



Breakout Group Map Images

Saturday, June 10, 2017

Fremont Elementary School

Group 1 - June 10

END


- City Boundaries
- Northside Study Area
- Potential Specific Plan Area



LEGEND

City Boundaries

Northside Study Area

 Potential Specific Plan Area



Study Area Map

NORTHSIDE SPECIFIC PLAN



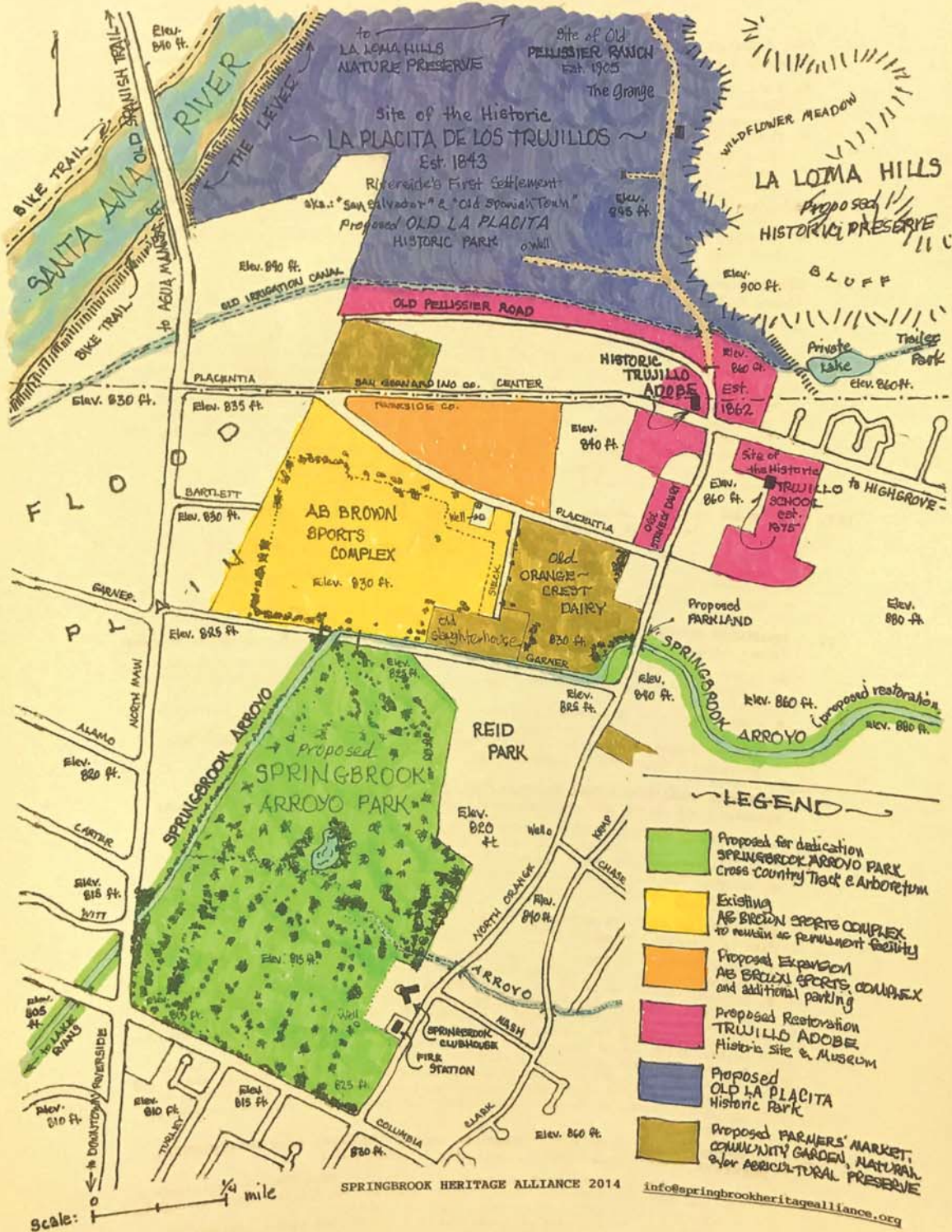
Availability Session Map Images


Monday, June 12, 2017

Ruth Lewis Community Center



SPRINGBROOK HERITAGE PARKLANDS & WALKING TRAILS Old Spanish Town Village District





JUNE 12, 2017

LAND USE SUGGESTIONS FOR THE NORTHSIDE OF RIVERSIDE

To all interested parties,
Uses I suggest, in order of preference, for the undeveloped spaces in the Northside of Riverside, such as the old golf course and surrounding flood plain. Shallow flooding, as in 1862 and 1938, must be considered:

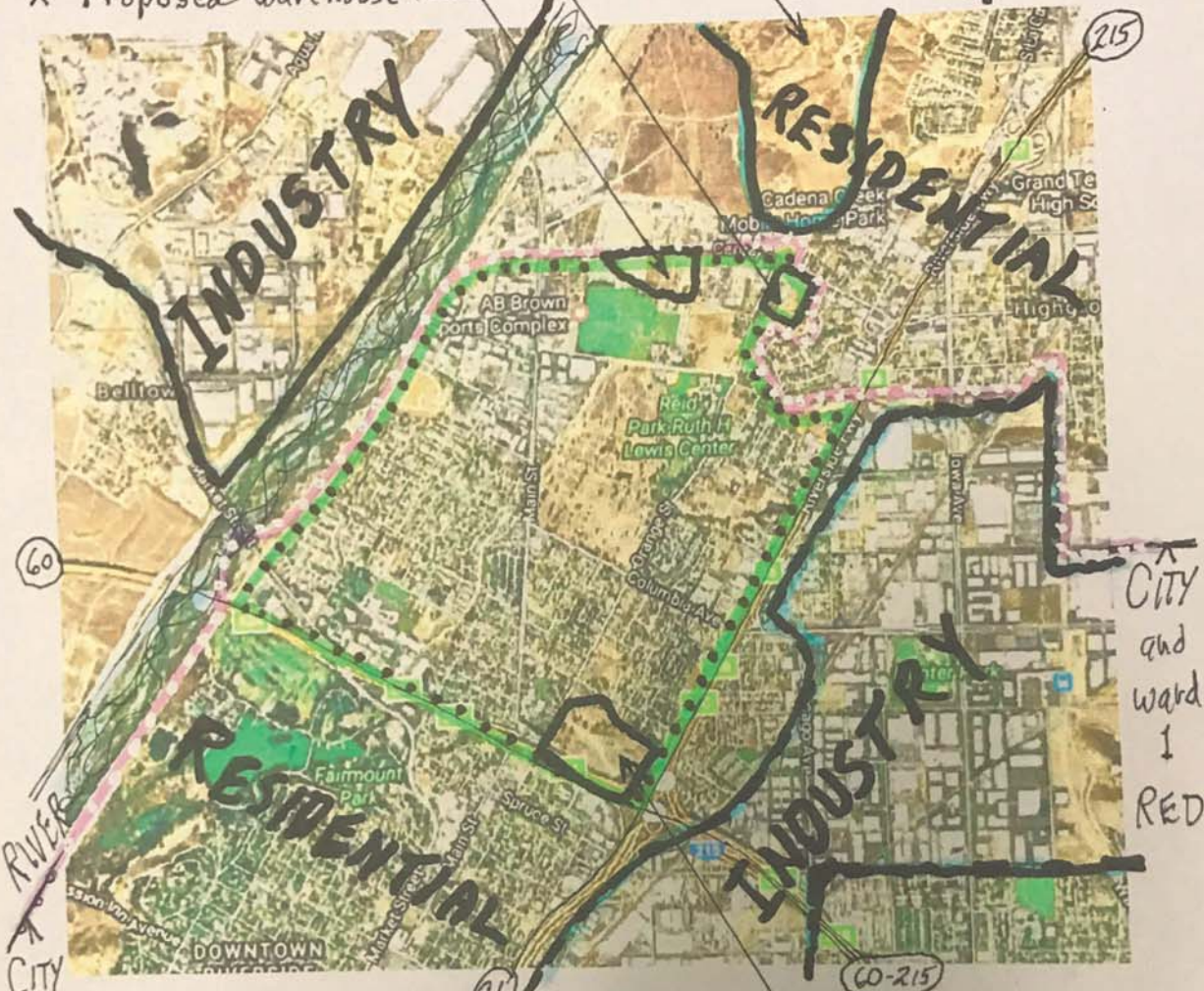
1. Many areas could be vacant, mowed by owner and/or city in spring.
2. Grass and/or dry land parks and sports fields, such as cross country running, open daily.
3. Community garden plots where water is available.
4. Model plane and drone community air field.
5. Open-air swap meet and/or farmers market with parking.
6. Open-air and/or sun-sheltered storage yards.
7. Small, limited single story office or shop complexes.

Thank you,
Jim Wood, 951-684-0143

Please see my illustration -

X Proposed Warehouse NO!

RIVERSIDE
NORTHSIDE
2017



and
Ward 1
-RED

• **NO** MORE COMMERCIAL,
INDUSTRY, TRAFFIC IN
THE NORTHSIDE! •

Proposed Guthrie Hotel,
Apt, Food, Gas. - OK?

951-684-0143 — Jim Wood 2017

YOUR PASSPORT



TO THE NORTHSIDE SPECIFIC PLAN



VISIT

www.NorthsidePlan.com

As the project advances, you will find the working papers and reports and draft planning concepts. *Also, make sure to sign up on the website to receive email with project announcements and updates.*



REQUEST

**A Presentation for your
community organization**

Contact the Project Manager



CONTACT

**David Murray, Senior Planner
City of Riverside
Project Manager**

3900 Main St / 3rd Fl / Riverside, CA 92522
(951) 826-5773 / dmurray@riversideca.gov

Use this passport to gather stamps as you visit each open house station and learn about the Northside Specific Plan project, and how you can share your vision about the future of Riverside's Northside Neighborhood. Then bring your completed passport to the "Welcome to the Northside Specific Plan" station and get a raffle ticket for a chance to win one of many great prizes!

OPEN HOUSE PASSPORT

As you visit each station below, ask staff members for the corresponding stamp. When your passport is complete, present it at the "Welcome to the Northside Specific Plan" station and get a raffle ticket for a chance to win!



Examples of Notification Postings

Facebook:

 **City of Riverside, CA - City Government**
May 31 at 1:53pm · 🌐

A new plan to guide future land use, mobility, open space and community design in the Northside area is now underway!

The City of Riverside has initiated the preparation of a Specific Plan for the Northside Neighborhood, and we would like your input! Public involvement is essential for the success of this planning effort and will help shape the future of the Northside. There will be two opportunities for you to participate in the first community workshop, and we hope that you are able to attend one of them.

For more information, visit www.NorthsidePlan.com



👍 Like 💬 Comment ➦ Share

Twitter:

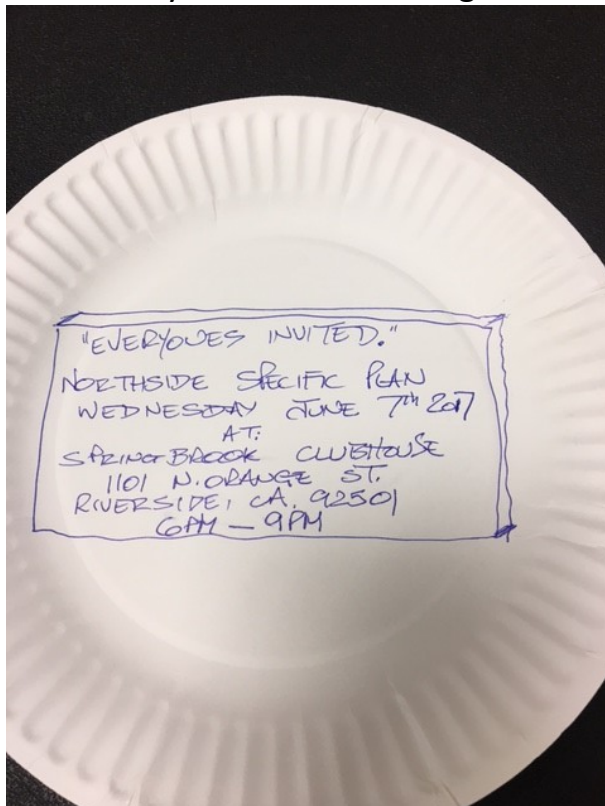
 **City of Riverside,CA** @riversidecagov · May 31

A new plan to guide future land use, mobility, open space & community design in the Northside area is now underway! NorthsidePlan.com



🗨 1 ❤ 1 ✉

Community-Generated Postings:



Attention Breezewood community

Attached is a flyer promoting some upcoming workshops and fun events for the kids, hosted by the City of Riverside.

More importantly, this is an opportunity for you and your family to have a voice in what the plans are for our immediate area.

This is a very exciting time, for us to be invited to be a part of BIG changes that will directly affect the future of the community.

Please make an effort to be at one of these meetings as your opinion and new ideas are needed. You all understand MORE than anyone, what our needs are for Breezewood and the homes and businesses around us.

I am there because I care about you all and the future of our community!

I do hope to see you there.

Ms. Libby

Just a note: Mayor Bailey will be doing his morning walk past Breezewood 8am this Saturday! 😊

SPRINGBROOK HERITAGE ALLIANCE NEWS

Riverside - Colton - Highgrove - Grand Terrace
California, U.S.A.

May 25, 2017

THE LATEST FROM THE FRONTLINES:

The Center Street Commerce Center Warehouse Draft CEQA Study is stalled, so says Planning Division staff, because of all the opposition to the project, but we are still circulating our petition to stop it. You done good!...The Roquet Ranch Residential Project at La Loma Hills, which our members voted to oppose earlier this year, is moving forward very slowly--the CEQA Report is not yet ready for public review, in part because of comments received from our Alliance...Riverside Developer Jim Guthrie has proposed a high-density mixed-use residential project on the Riverside County Transportation Commission lands across Orange from Fremont Elementary School. He may be at our June meeting to present his case...The Trujillo Adobe Restoration is in the early study stages of preparation...The ORON Community Vision for the Northside is now on the City's website and will be used by Northside & Pellissier Ranch Specific Plan consultants as a reference, which may or may not be a good thing for our Cause as it doesn't mention our Parklands proposal. www.NorthsidePlan.com

NORTHSIDE & PELLISSIER RANCH SPECIFIC PLAN:

Now is the time for all members of our Alliance to speak up for SHA's Parklands & Walking Trails and Spanish Town Village Historical District

Community Workshops are scheduled as follows:

Wednesday, June 7 from 6-7 p.m. at Springbrook Clubhouse

Saturday, June 10 from 9 a.m. to Noon at Fremont Elementary School

Drop-In Session for Talk With the Planners:

Monday, June 12 from 2 to 6:30 p.m. at Ruth Lewis Community Center

More information & email sign-up:

www.NorthsidePlan.com

CALL FOR ACTION:

SUPPORT AB-1235 "THE SAR CONSERVANCY PROGRAM"

The Santa Ana River Conservancy, an organization that SHA endorses for their on-going efforts to protect our beautiful river and its immediate environs, will be the recipients of a \$20 million grant from the State of California if this bill passes the Legislature. The bill will be heard in the Assembly Appropriations Committee tomorrow, May 26, at 9:00 a.m. Contact the Assembly Appropriations Committee Chairman, Lorena Gonzalez Fletcher at [\(916\)319-2081](tel:9163192081) and tell her you support this bill. For more information about the SAR Conservancy and how these funds will be used, contact Patricia Lock-Dawson at pld@pldconsulting.net

KNOWLEDGE IS POWER SERIES:

San Bernardino Valley historian Nick Cataldo is confirmed as special guest speaker for January 2018...SHA welcomes suggestions for speakers--send yours to info@springbrookheritagealliance.org or come to our next meeting.

NOTES FROM OUR MAY MEETING:

Possibly the most important thing to come out of our May 18 meeting was the introduction of

David Murray and Luke Seibert, planners for the Riverside Community and Economic Development Department assigned to the Northside Specific Plan, to OSTA's Director-at-Large Alex King, who was a guest speaker last year. He brought with him two maps of the Old Spanish Trail--one a close-up of the section from Cajon Pass to Agua Mansa. In this way, Murray and Seibert learned of the National Park Service's interest in Pellissier Ranch, and why it should be saved as a historical site. If the Roquet Ranch project is approved, that would be the end of Pellissier Ranch as a historic site. For this reason we have invited King to attend the Northside Specific Plan workshops. Check out OSTA's website at www.osta.org...

MARK YOUR CALENDAR:

June 3: Northside Walk With The Mayor--8:00 a.m. www.riversideca.gov
June 7: Northside Specific Plan Community Workshop--6:00 p.m.(see above)
June 10: Northside Specific Plan Community Workshop--9:00 a.m. (see above)
June 12: Northside Specific Plan Drop-In Session--2:00-6:30 p.m. (see above)
Northside Improvement Association Meeting--7:00 p.m. Reid Park
June 15: Springbrook Heritage Alliance Meeting--7:00 p.m. Reid Park

ABOUT SPRINGBROOK ARROYO AND ITS HERITAGE:

Located in the heart of the Santa Ana River Watershed, Springbrook Arroyo Watershed runs from the top of Pigeon Pass and adjacent peaks of Blue Mountain, Box Springs Mountains, Mt. Rubidoux and La Loma Hills. People have been living and working and playing here for thousands of years!

Everyone who lives and works and plays here now is a part of that heritage. But, the bad news is that what is left of our irreplaceable natural, cultural, and historical community assets are in danger of being lost forever. We think future development should be based on our heritage, not the boom-town land-use policies that are threatening our well-being.

If you don't want to see your heritage destroyed by ugly warehouses, gigantic urban gentrification projects and cement flood control channels in our arroyos, please join us!

CONTACT US AT:

info@springbrookheritagealliance.org

FOLLOW US ON FACEBOOK:

<https://www.facebook.com/springbrookheritagealliance>

SIGN OUR PETITIONS WHEN YOU COME TO OUR NEXT MEETING:

Support Springbrook Heritage Parklands & Walking Trails
Stop the Center Street Commerce Center Warehouse