



## Active Transportation Program (ATP) Cycle 1 Grant

Public Works Department

City Council  
January 23, 2018

RiversideCA.gov

### BACKGROUND

1. In May 2014, the Public Works Department submitted an Active Transportation Program (ATP) grant application seeking funding for the Downtown & Adjoining Areas Bicycle and Pedestrian Improvement Project.
2. In November 2014, the City was awarded grant funding in the amount of \$877,000 for the project.
3. Local matching funds of \$120,000 were committed
4. In March 2017, grant funds were allocated



2

RiversideCA.gov

## PROJECT COMPONENTS

1. 17 mile expansion of the City's existing class II bike lanes
2. Connection of existing sidewalks and improvements
3. Installation of a bike station at the Metrolink station
4. Installation of 2 City Bike Share Program terminals
5. Installation of a new bicycle staging area
6. Installation of 6 connectivity map kiosks



3

RiversideCA.gov

## PROJECT COMPONENTS (CONTINUED)

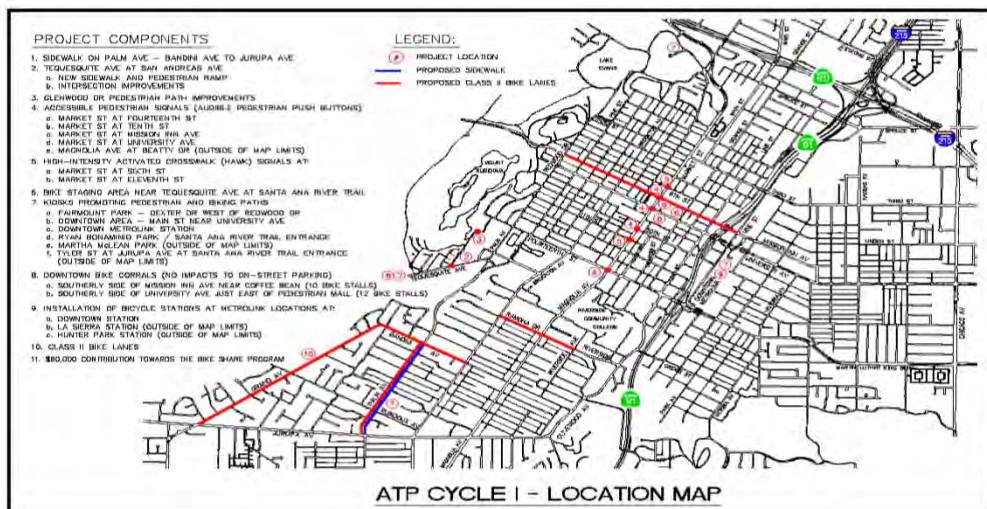
7. Upgrade 2 uncontrolled crosswalks to HAWK signals
8. Conversion of 2 parking locations to bike corrals
9. Installation of 5 accessible pedestrian signals
10. Creation of walking path connecting to Mt. Rubidoux
11. Installation of a controlled crossing and new sidewalk to Mt. Rubidoux



4

RiversideCA.gov

## PROJECT LOCATION MAP



5

RiversideCA.gov

## ATP CORRIDORS

Expansion of ATP Corridors focuses on increasing walking and cycling, enhancing safety, connecting facilities, and encouraging the adoption of an active lifestyle for City of Riverside residents.



Policy CCM: 10.1 – Bicycle facilities consistent with Bicycle Master Plan

10.6 – Encourage pedestrian travel through the creation of sidewalks and street crossings

6



RiversideCA.gov

## BIKE STATION



Installation of a bike station at the Downtown Metrolink Station will provide bicyclists with showers, lockers, and repair equipment.

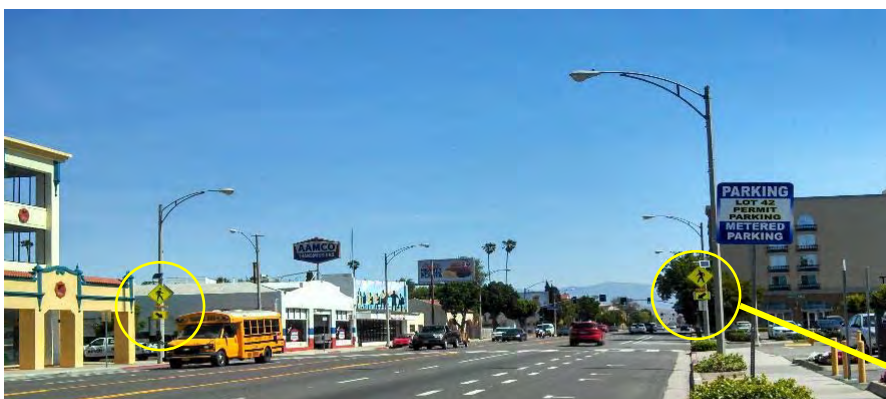
Policy CCM: 10.5 – Promote the health benefits of using a bicycle or walking as a means of transportation  
10.12 – Encourage bicycling as a commute mode to school, work, etc.

7



RiversideCA.gov

## CROSSWALK UPGRADES



The upgrade of existing rapid flashing beacons to HAWK signals at two uncontrolled crosswalks on Market St. will increase safety along heavily used walking routes.

Policy CCM: 10.4 – Identify and seek to eliminate hazards to safe, efficient bicycle or pedestrian movement citywide



Current rapid flashing beacon crosswalk



Upgraded HAWK signal crosswalk concept <sup>8</sup>



RiversideCA.gov



## BIKE STAGING AREA

Installation of a bike staging area at the West end of Tequesquite Ave. will offer additional parking and closer access to the SART and community garden within the adjacent Ryan Bonominio Park.



Policy CCM: 10.7 – Maintain an extensive trails network that supports bicycles, pedestrians and horses and is linked to the trails systems of adjacent jurisdictions

9

RiversideCA.gov

## BIKE SHARE TERMINALS

Further development of the City's new and innovative Bike Share Program to include new terminals and depots will make it even easier for residents to utilize this new active transportation alternative.



Policy CCM: 10.5 – Promote the health benefits of using a bicycle or walking as a means of transportation  
10.12 – Encourage bicycling as a commute mode to school, work, etc.

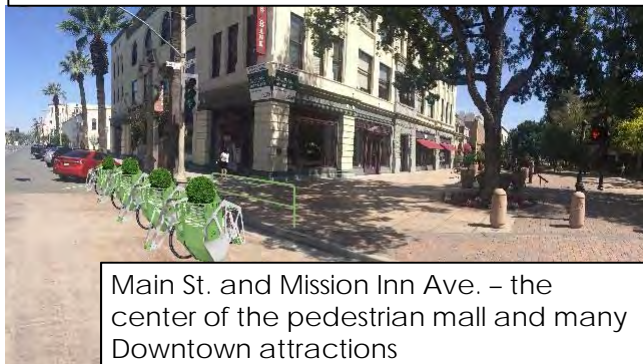
10



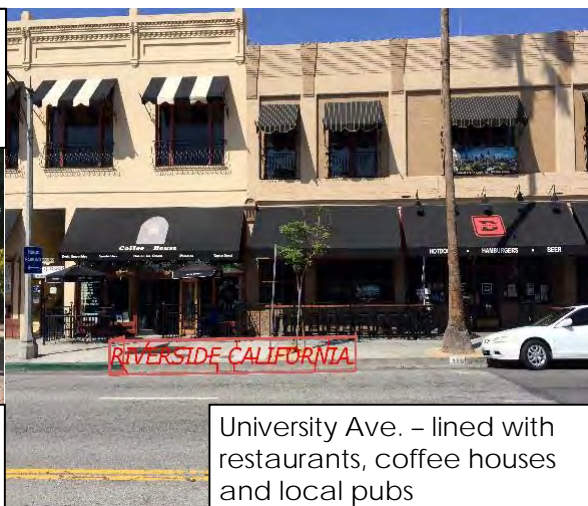
RiversideCA.gov

## BIKE CORRALS

The addition of bike corrals in the busy Downtown Area will encourage patrons and employees to cycle to and from their destinations



Main St. and Mission Inn Ave. – the center of the pedestrian mall and many Downtown attractions



University Ave. – lined with restaurants, coffee houses and local pubs



Policy CCM: 10.2 – Incorporate bicycle and pedestrian trails and bicycle racks in future development projects

11

RiversideCA.gov

## ACCESSIBLE PEDESTRIAN SYSTEMS

Installation of accessible pedestrian systems at 5 key locations will improve safety and walkability.  
System Features:

1. Ambient noise controlled locator tone
2. Easy to activate 2" ADA button with raised arrow
3. High quality digital audio messages
4. Automatic volume adjustment to ambient noise levels
5. Vibro-tactile walk phase indication
6. Meets / exceeds ADA, MUTCD, TAC, and PROWAAC guidelines



Policy CCM: 10.4 – Identify and seek to eliminate hazards to safe, efficient bicycle or pedestrian movement citywide

12

RiversideCA.gov

## WALKING PATH

Creation of a walking path separated from traffic by an asphalt berm within the curve on the south side of Glenwood Dr. near the Southerly Mt. Rubidoux Park entrance will provide a sustainable walkway for Park visitors, connectivity to the neighborhood and remove pedestrians from the travel lanes.



Policy CCM: 10.8 – Maximize links between trails and major activity centers, residential neighborhoods, schools, shopping centers and employment centers

13

[RiversideCA.gov](http://RiversideCA.gov)

## BID AWARD

1. On September 20, 2017 bids were received from 5 contractors for construction of the project
2. The lowest bid received was \$1,233,881.62 (33% above the Engineer's Estimate)
3. Original estimates of \$70,000 per HAWK signal were low increasing overall project costs, as bidders showed the cost per system in the \$210,000 range



14

[RiversideCA.gov](http://RiversideCA.gov)

## RECOMMENDATIONS

That the City Council:

1. Accept Public Works Department receipt of grant funds in the amount of \$877,000 from the California Department of Transportation Active Transportation Program Cycle 1 grant;
2. Award a construction contract for Bid No. 7490 for the Downtown Pedestrian and Bicycle Improvements to Horizons Construction Company, of Orange, California, in the amount of \$1,233,881.62;
3. Authorize the City Manager, or his designee, to execute the construction contract with Horizons Construction Company including making minor non-substantial changes; and
4. Authorize a supplemental appropriation in the amount of \$877,000 in California Department of Transportation Active Transportation Program Cycle I to Downtown Bike/Ped Improvements project account number 9889100-440236 and increase the estimated revenue by the same amount in Downtown Bike/Ped Improvements project account number 9889100-335450.



15

RiversideCA.gov