



Emergency Repair Work to Replace an Inoperable 12-inch Valve at Linden Booster Station

Riverside Public Utilities

Board of Public Utilities
February 12, 2018

RiversideCA.gov

BACKGROUND

1. Linden Booster Station – RPU's Largest Booster Station
2. Supplies water to Emtman and Sugarloaf Reservoirs
3. All four pumps are needed during the summer
4. Staff recently learned of an inoperable 12-inch suction valve on Pump No. 3



2

RiversideCA.gov

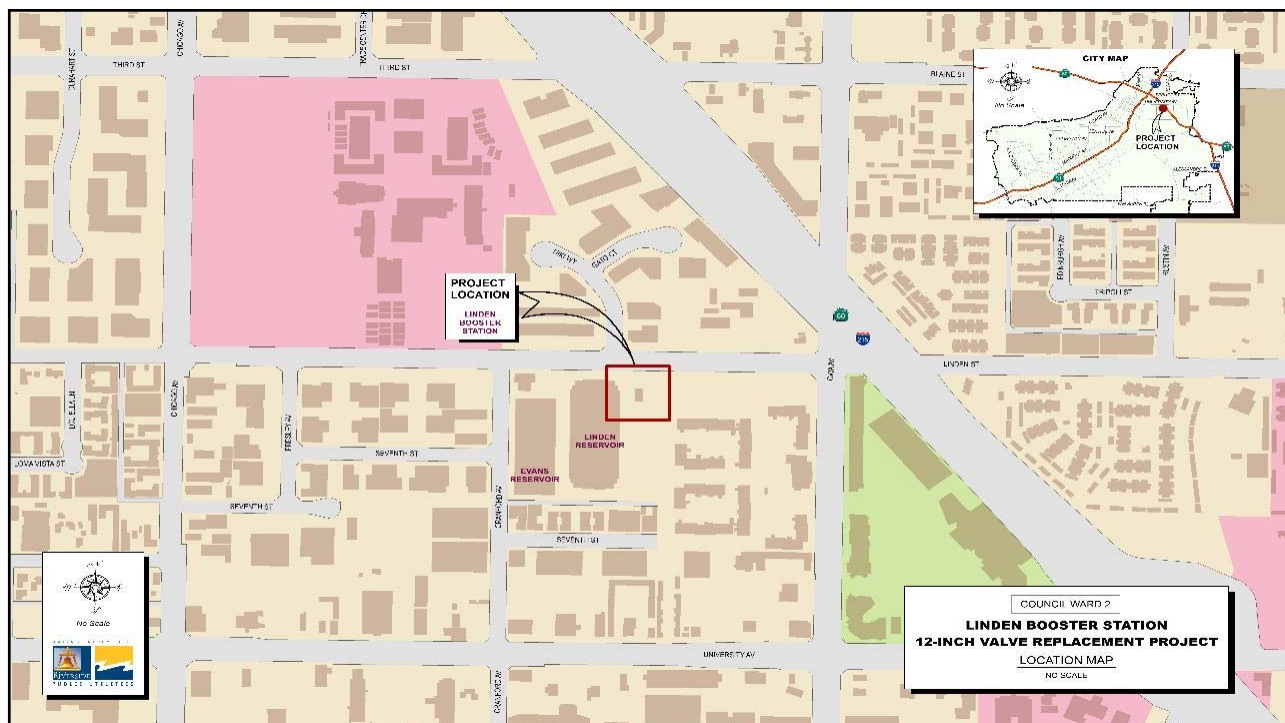
BACKGROUND (CONT.)

5. Replacing the valve will require shutting down the entire booster station
6. The work can only be completed during the winter
7. Deep valve and confined area
8. The Purchasing Manager, the City Manager and the Public Utilities General Manager declared an emergency



3

RiversideCA.gov



PROJECT DESCRIPTION

1. Pothole existing utilities
2. Isolate the booster station
3. Excavate and stabilize the trench
4. Remove and replace existing 12-inch valve
5. Backfill the trench and reenergize the booster station



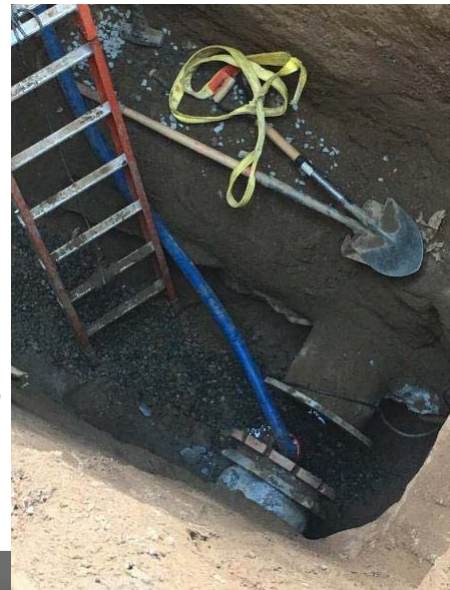
5

RiversideCA.gov

PROJECT DESCRIPTION (CONT.)



Broken Valve



Deep
Excavation,
Dewatering and
Piping

PRICE QUOTATIONS

On January 22, 2018, staff received price quotations from two contractors:

	<u>COMPANY</u>	<u>CITY LOCATION</u>	<u>BID TOTAL</u>
1.	Weka, Inc.	Highland, CA	\$53,695
2.	C.P. Construction Co., Inc.	Upland, CA	\$69,900

► *Engineer's Construction Cost Estimate \$60,000*



7

RiversideCA.gov

PROJECT BREAKDOWN

Project Breakdown:	
Engineering Performed By:	RPU Engineering staff
Construction to be Performed By:	Weka, Inc.
Anticipated Start Date:	January 2018
Anticipated Duration:	1 week
Coordination Required With:	<ul style="list-style-type: none"> ▪ RPU Water Operations ▪ RPU Water Field Crews
Reimbursements:	None



8

RiversideCA.gov

PROJECT BUDGET BREAKDOWN

Description	Cost	Percent of Total
Design	\$6,305	6.0%
Valve Replacement (Weka, Inc.)	\$53,695	51.1%
Construction Contingencies	\$10,000	9.5%
Construction Support (City Forces)	\$20,000	19.1%
Construction Management	\$5,000	4.8%
Inspection and Geotechnical Testing	\$10,000	9.5%
Work Order Total	\$105,000	100.0%



9

RiversideCA.gov

RECOMMENDATIONS

That the Board of Public Utilities:

1. Recommend that the City Council:
 - a. Adopt, by at least five affirmative votes, the attached Resolution declaring the Emergency Repair Work to Replace an Inoperable 12-inch Valve at Linden Booster Station an urgent necessity for the preservation of life, health or property waiving the formal public bidding requirements in accordance with section 1109 of the City Charter;
 - b. Approve a construction contract, in the amount of \$53,695 to Weka, Inc. for the emergency construction repairs;
 - c. Authorize an 18.86% (\$10,000) change order authority for the construction contract with Weka, Inc. for the emergency repairs; and
2. Approve the expenditure of \$105,000 for Work Order No. 1819037 which includes all design, construction, construction management and inspection costs for the Emergency Repair Work to Replace an Inoperable 12-inch Valve at Linden Booster Station.



10

RiversideCA.gov