



Engineering, Design and Construction Letter Agreement between Riverside Public Utilities Department and Southern California Edison Company

Riverside Public Utilities

Board of Public Utilities
February 26, 2018

RiversidePublicUtilities.com

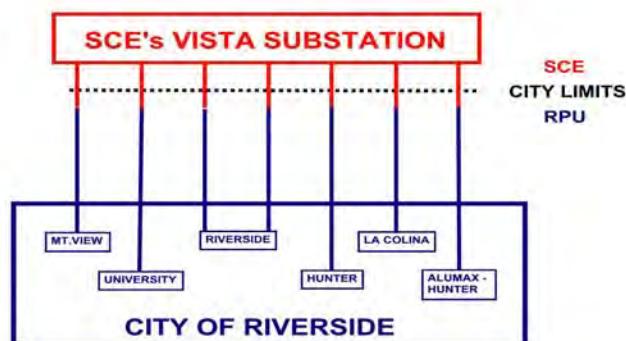


1

BACKGROUND

The City of Riverside is served by Seven (7) 69kV Electric Transmission lines from Southern California Edison's Vista Substation located north of the City limits in Grand Terrace

SEVEN-69KV TRANSMISSION LINES SERVE RIVERSIDE



RiversidePublicUtilities.com



2

BACKGROUND (CONT.)

SCE Vista Substation

1. Metering Pulse totalizer failed on July 21, 2017
2. Totalizer installed around 1980
3. Equipment exceeded its useful design life



3

RiversidePublicUtilities.com

BACKGROUND (CONT.)

SCE Vista Substation

4. 69kV Metering Unit failed on August 19, 2017
5. Installed in the 1960's
6. Equipment exceeded its useful design life



69kV Metering PT - SCE Vista Substation

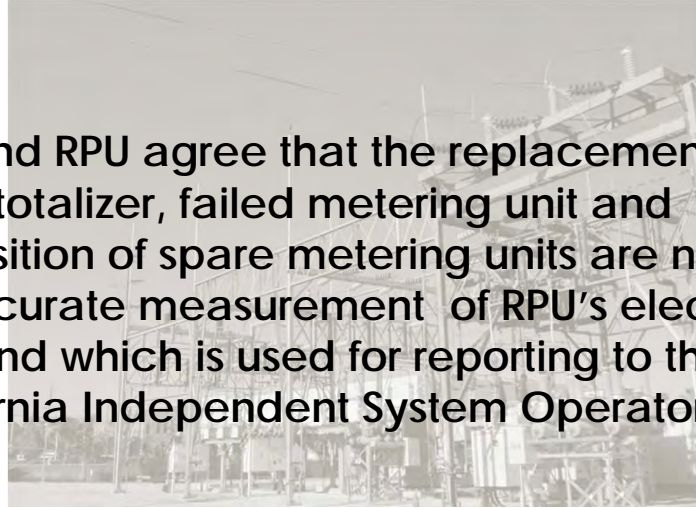


4

RiversidePublicUtilities.com

BACKGROUND (CONT.)

SCE and RPU agree that the replacement of the pulse totalizer, failed metering unit and acquisition of spare metering units are necessary for accurate measurement of RPU's electric demand which is used for reporting to the California Independent System Operator.



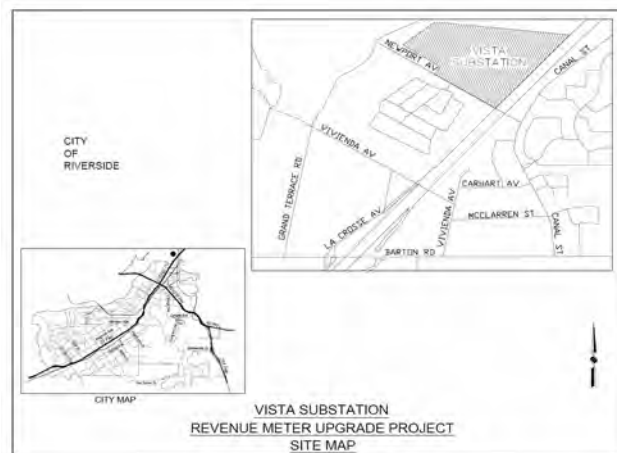
RiversidePublicUtilities.com



5

Project Description

1. Replace existing totalizer with a new totalizer
2. Perform complete testing and commissioning of the new totalizer



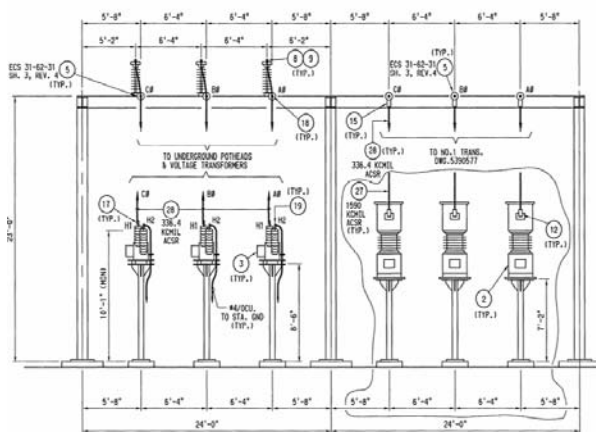
RiversidePublicUtilities.com



6

Project Description (CONT.)

3. Procure two (2) sets of 69kV metering units (one (1) set is spare)
4. Replace failed 69kV metering unit on Vista - Mountain View Line. Store spare set for use in event of future failure.



7

RiversidePublicUtilities.com

COST BREAKDOWN

DESCRIPTION	AMOUNT
SCE Estimated Cost – based on the Letter Agreement	\$739,357.04
Project Management and Engineering	\$36,000
RPU Testing and Commissioning	\$21,000
Contingency (5%)	\$39,817.96
Work Order Total	\$836,175



8

RiversidePublicUtilities.com

LONG TERM PLAN

1. RPU Engineering Staff Review to Replace the remaining Six (6) line Metering Units at Vista Substation.
2. Request Estimate to Replace the remaining Six (6) Metering Units at Vista Substation.
3. Review Budget Requirements and Return to Board for approval at a later date.



9

RiversidePublicUtilities.com

RECOMMENDATIONS

That the Board of Public Utilities:

1. Approve the capital expenditure of \$836,175 for Work Order No. 1817274;
2. Recommend that the City Council approve the Engineering, Design and Construction Letter Agreement with SCE for the work associated with existing metering pulse totalizer units and California Independent System Operator metering at Vista Substation in the amount of \$739,357.04; and



10

RiversidePublicUtilities.com

RECOMMENDATIONS (CONT.)

3. Recommend that the City Council authorize the City Manager, or his designee, to execute the Engineering, Design and Construction Letter Agreement with SCE, including making minor non-substantive changes, and to sign all documents necessary to complete the transaction for filing with the Federal Energy Regulatory Commission by SCE.