

Trash Diversion and Recycling Update

Public Works Department

Utilities Service/Land Use/Energy Delivery Committee
May 21, 2018

RiversideCA.gov

PERFORMANCE AUDIT



2

RiversideCA.gov

TRASH SERVICES

Residential

1. City and Burrtec
2. Curbside collection (trash, greenwaste and recycling)
3. 2 bulky items per year



Commercial

1. Three haulers (Athens, Burrtec & CR&R)
2. Trash, recycling, greenwaste and some food collection



3

RiversideCA.gov

STATE REQUIREMENTS

Remember AB939 (1989)?

1. Got the ball rolling
2. Required waste diversion (aka recycling and source reduction) and provided a measurement tool for jurisdictions (i.e. 50% diversion of waste)

Let me introduce you to SB1016 (2007)

1. Modified approach (based on disposal **and** programs)
2. CalRecycle established maximum disposal rates for every jurisdiction in California



4

RiversideCA.gov

MORE STATE REQUIREMENTS

1. AB 341- mandatory commercial recycling
2. AB 1826 - mandatory commercial organic recycling
3. **NEW!** AB 1383 proposes to reduce short-lived climate pollutants through a 50% reduction in disposal of organic waste by 2020

Organics = all food waste, paper towels, tissues, compostable cups/dishes, tea bags, coffee filters, wet/soiled paper and cardboard



5

RiversideCA.gov

HOW ARE WE DOING?

Disposal Rate (pounds per person per day)	Residential		Commercial	
	Maximum	Riverside Actual	Maximum	Riverside Actual
	8.6	6.9	19.5	15.4

Riverside is doing great, but we need to be ready for those new regulations!

HOW ARE WE DOING IT?

Thanks to our Partners and Programs!



6

RiversideCA.gov

PARTNERS

1. KRCB & WRCOG
2. Waste Haulers
3. Riverside County

Waste Processing

- a) The Agua Mansa MRF is a **key partner** in the City's waste diversion success
- b) Burrtec Waste operates MRF facility through a contract with Riverside County

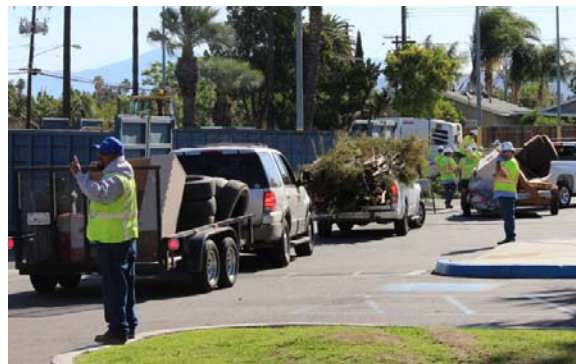


7

RiversideCA.gov

POPULAR PROGRAMS

1. Clean Up Riverside's Environment (CURE)
448 tons collected (2017)
That's about 64 elephants!
2. Curbside Appliance Recycling
386 appliances (2017)
3. Curbside Used Oil & Filter Collection / Recycling



8

RiversideCA.gov

POPULAR PROGRAMS

4. Holiday Tree Collection/Recycling
69.89 tons (2017)
5. Public Education/School Outreach
 - a) RUSD/Alvord Schools
 - b) WRCOG Oil Events
 - c) City Events & Service Groups



9

RiversideCA.gov

NEW PROGRAMS

1. Food Rescue
\$200,000 Grant from CalRecycle
2. Clean Compost Pilot
Education campaign to prevent contamination of greenwaste, increase compost made from local sources, and provide tips on proper use of compost
3. Farm to Food to Fuel (Compost)
 - a) Partnership with the Water Quality Control Plant with Burrtec
 - b) Pilot to divert and transport food waste to the wastewater treatment plant for transfer to energy for the plant



10

RiversideCA.gov

CHALLENGES

1. Increasing service demands
 - a) Homeless camp and railway clean ups
 - b) Annual cost of \$350K to \$450K
2. Increasing regulatory demands
 - a) The state continues to adopt new unfunded mandates
 - b) Organics regs creating the greatest impact on costs
3. No formal solid waste management policy in place



11

RiversideCA.gov

CHALLENGES



1. Equipment Needs
 - Increasing state mandates and other operational pressures, replacement of vehicles has fallen behind
2. Recycling Revenue
 - Current market forces creating negative demand for recyclables and price reductions
3. No future rate increases
 - For 10 years, rates have increased by the Consumer Price Index alone



12

RiversideCA.gov

PERFORMANCE AUDIT AND FUTURE ACTION

1. Ongoing mandated diversion compliance with new and existing programs
2. Continue as leader in sustainability
3. Continue outstanding customer service
4. Rate and fund stability
5. Operational efficiencies



13

RiversideCA.gov

RECOMMENDATIONS

That the Utilities Services/Land Use/Energy Delivery Committee:

1. Receive and file an update on Public Works, Solid Waste Division state mandated trash diversion and recycling activities; and
2. Provide input on a waste management and fiscal reserve policy(ies).



14

RiversideCA.gov