



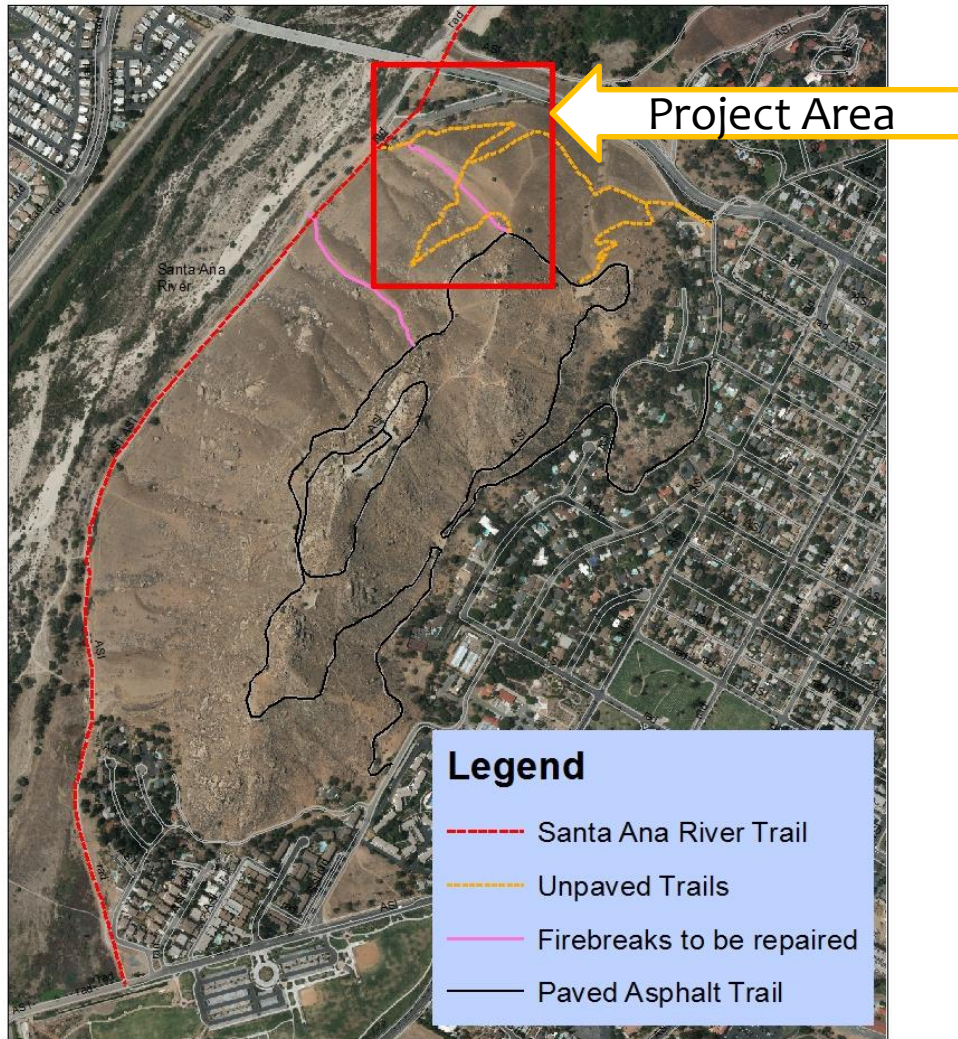
# **Mt. Rubidoux Unpaved Trails Repairs**

---

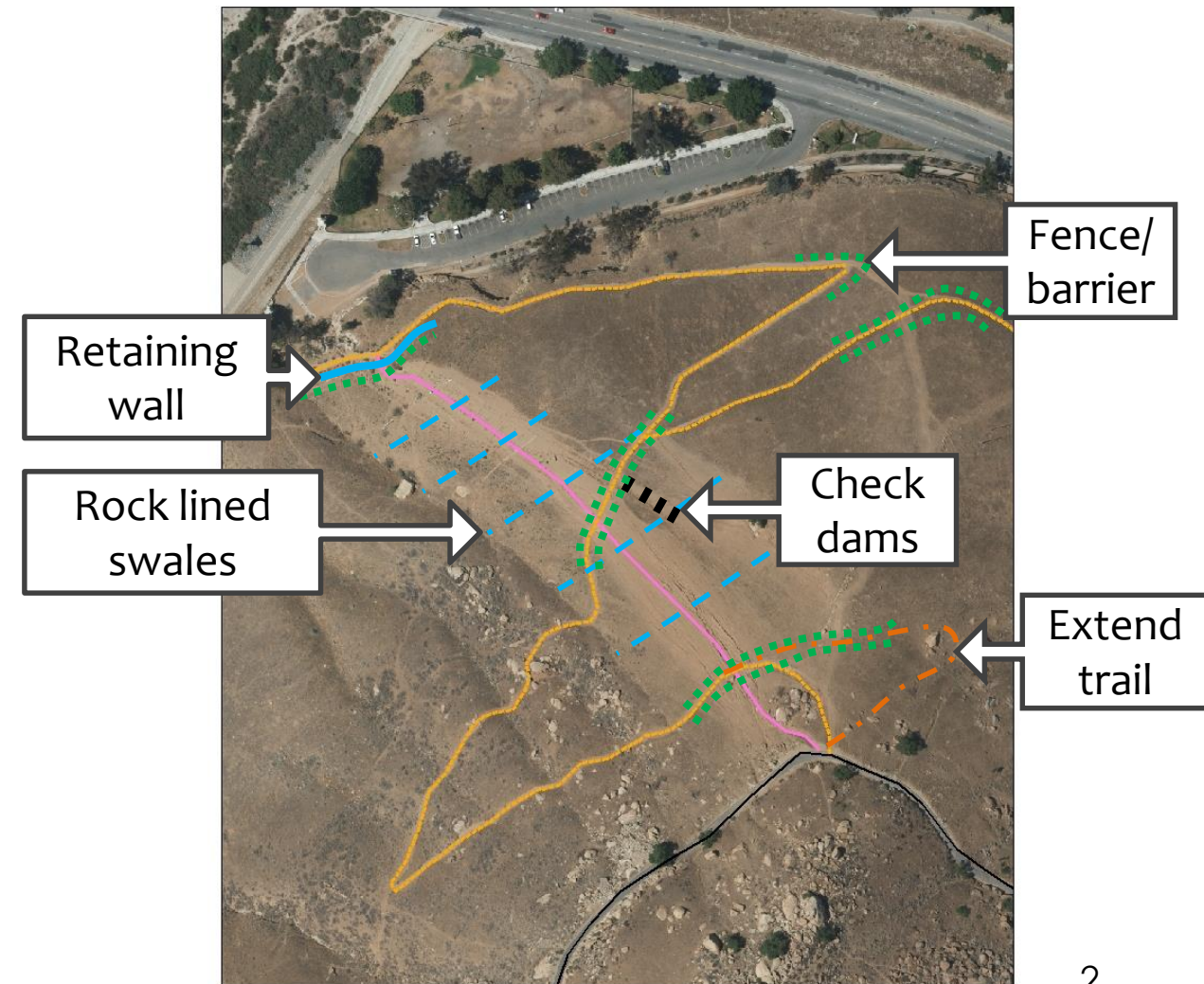
**Parks, Recreation, and Community Services  
Department**

Park and Recreation Commission  
July 16, 2018

# OVERVIEW



# PROJECT AREA





# EROSION





# EROSION



# SOLUTIONS

1. Redirect foot traffic to switchback trail
2. Slow down and accommodate storm water



# TOOLBOX – REDIRECT FOOT TRAFFIC

Retaining walls and historic handrails:



# TOOLBOX – REDIRECT FOOT TRAFFIC

Barriers, fencing, and signs:





# TOOLBOX – STORM WATER CONTROL

Rock check dams and swales:





# Recommendation

That the Park and Recreation Commission receive a report on repairs to the unpaved trails at Frank A. Miller Mt. Rubidoux Memorial Park, repairs to historic St. Francis Falls, and trailhead amenities to support the Santa Ana River Trail.