

# Mt. Rubidoux—Unpaved Trail Repairs and Erosion Control

## Issue: Erosion

- Concentrated water flowing at a high velocity
- Foot traffic tramples vegetation that is needed to protect soil
- Drought reduces vegetation growth

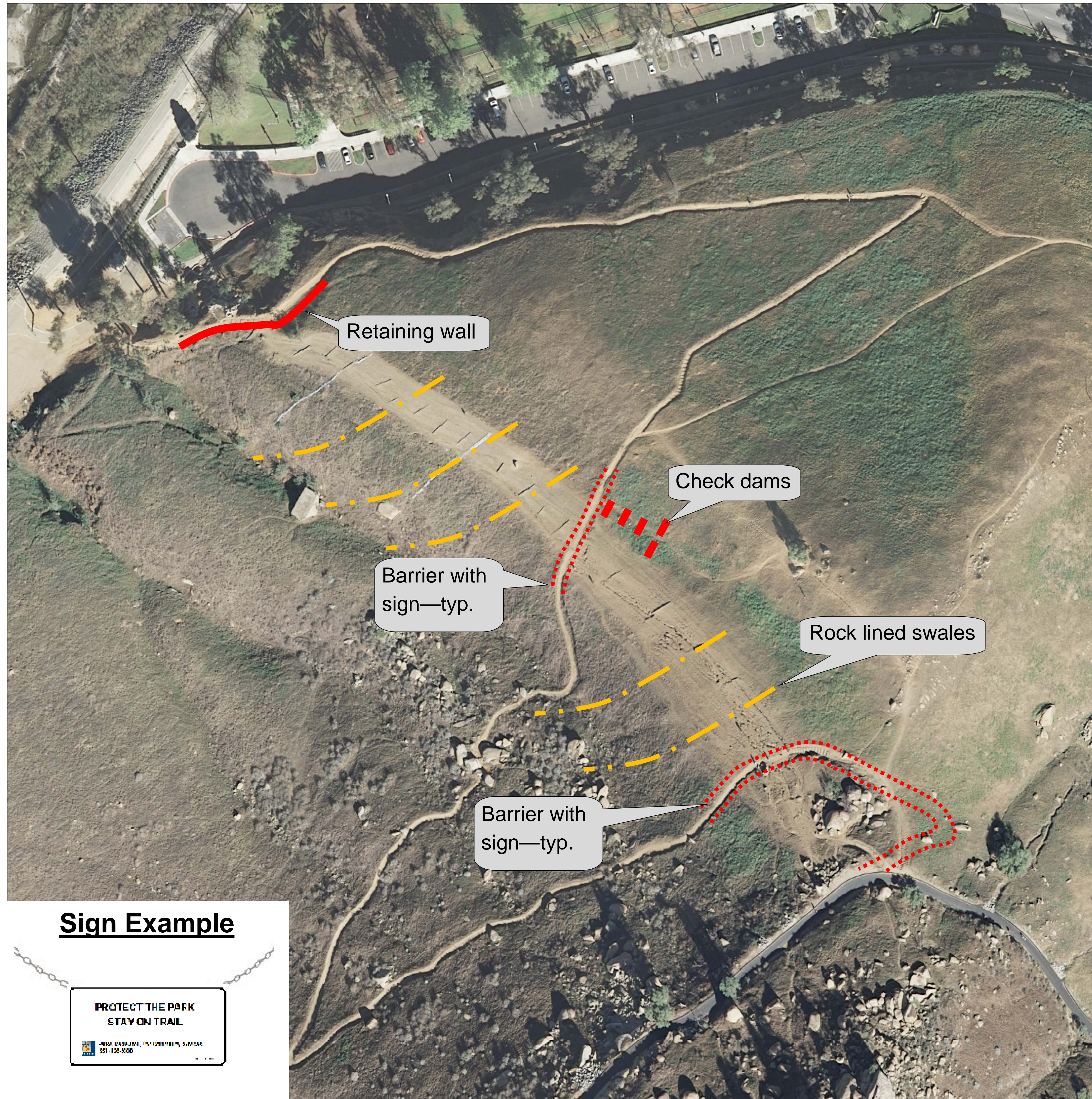


## Solution: Redirect foot traffic

- Retaining wall along base of fire-break and segments of fencing to direct foot traffic along switch-back trail
- Signage and trail markers to encourage use of switchback trail and discourage use of firebreak
- Reclaim unofficial paths

## Solution: Accommodate/slow down stormwater

- Gabion check dams
- Rock-lined drainage dips



## Toolbox

- Barrier options



- Gabion/rock check dams & swales



- Retaining wall

