

Community Workshop #3 Northside Interjurisdictional Specific Plan and EIR

Thank You for Attending!

Current Step in the Specific Plan Process

COMMUNITY INVOLVEMENT FRAMEWORK FOR THE NORTHSIDE SPECIFIC PLAN & PROGRAM EIR



Purpose of Today's Workshop

- Present and provide information about the Draft Plan
- Explain the process leading to the Draft Plan
- Ask for community feedback and input on the Draft Plan

Workshop Format

- Short presentation
- Open house stations

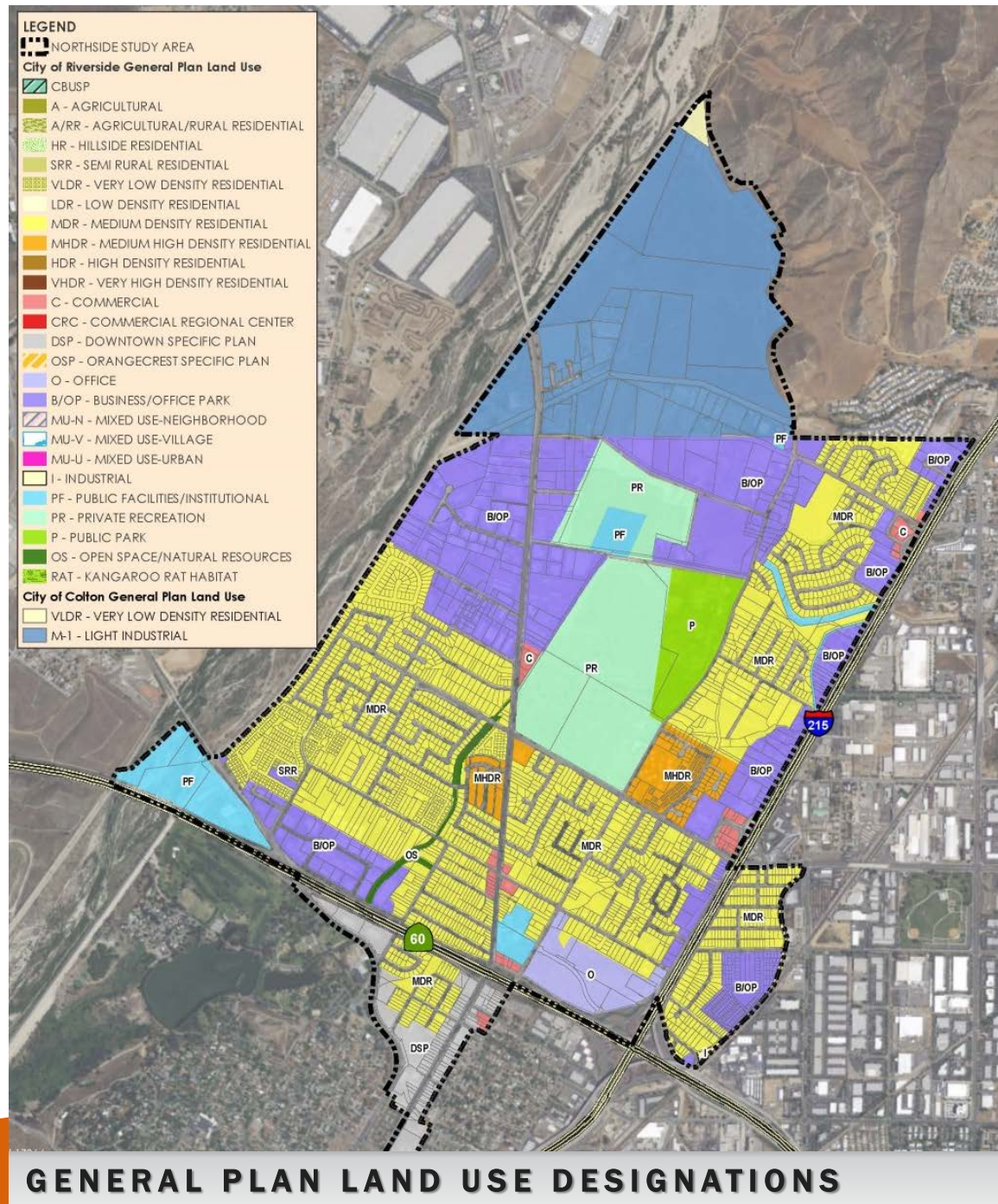


 Northside Specific Plan	WORKSHOP PASSPORT 	
	 Station 1: Draft Plan	 Station 5: West La Cadena Corridor
	 Station 2: Existing Neighborhoods with Streetscape and Mobility Improvements	 Station 6: Open Space, Parks, and Trails
	 Station 3: Northside Village Center	 Station 7: Pellissier Ranch
	 Station 4: Spanish Town	 Station 8: Future Mixed-Use and Residential Neighborhoods



Project Overview

- Preparation of a Specific Plan
- Over 1,400 acres
- Governed by four jurisdictions:
 - City of Riverside
 - City of Colton
 - County of Riverside
 - County of San Bernardino
- Multiple Stakeholders



What We Heard



What We Heard



Family-Oriented Community



Community Gardens



Grocery Store/Farmers Market



Parks and Open Space

What We Heard



Spanish Town



Restore Springbrook Arroyo



Reduce Truck Traffic



Agriculture



What We Learned

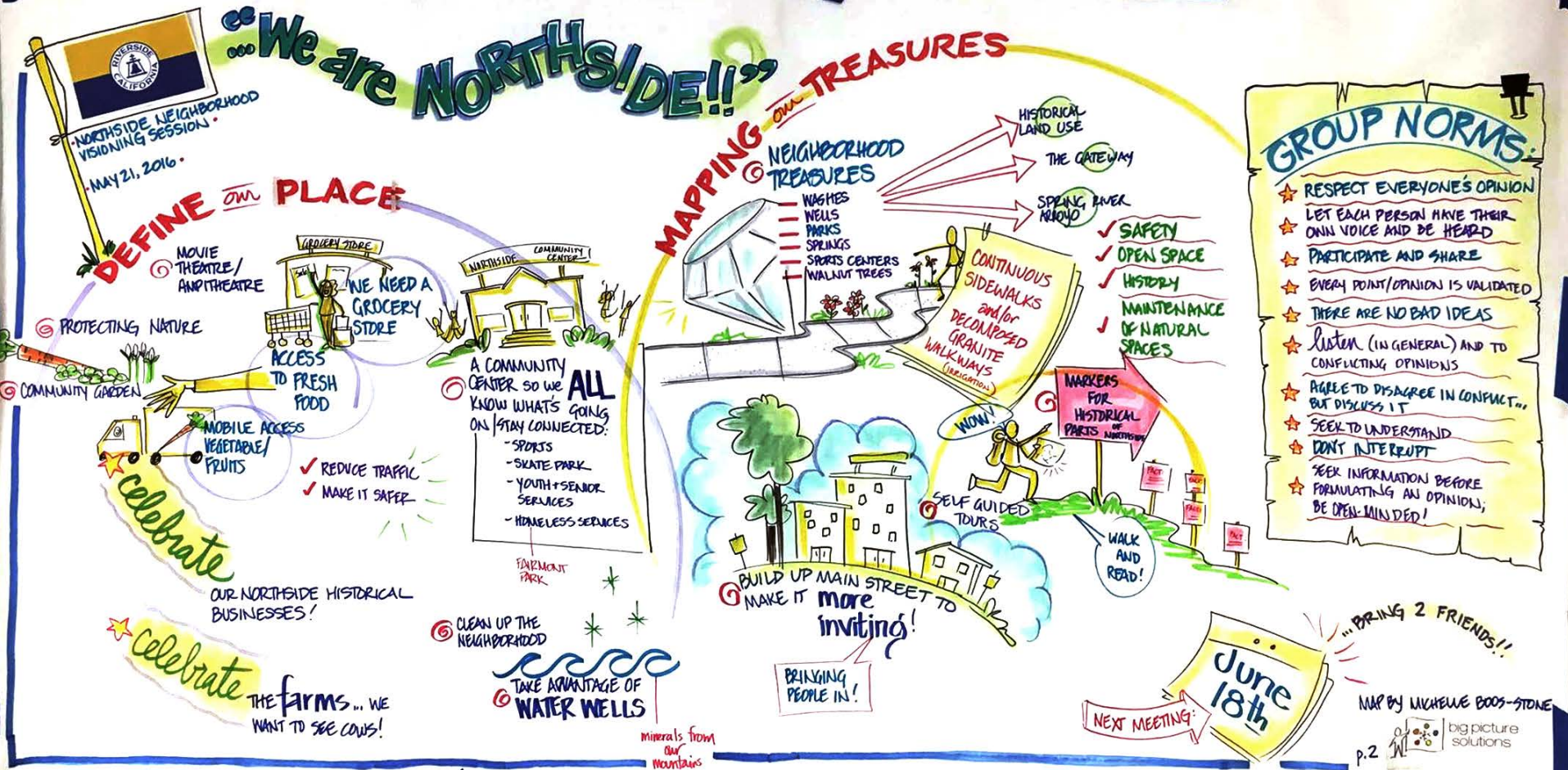
- Land Use
- Visual Character
- Environmental Setting
- Mobility
- Infrastructure
- Balanced Economic Development



How we developed the Draft Plan



How we developed the Draft Plan



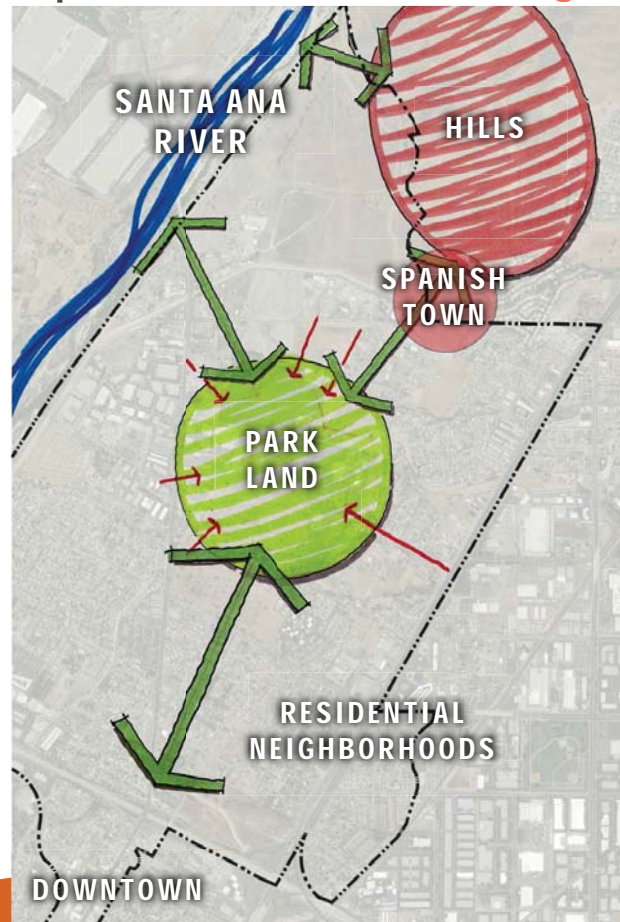
How we developed the Plan: *We're all in it together!*



How we developed the Plan: **Existing Systems**



How we developed the Plan: **Connecting Anchors**



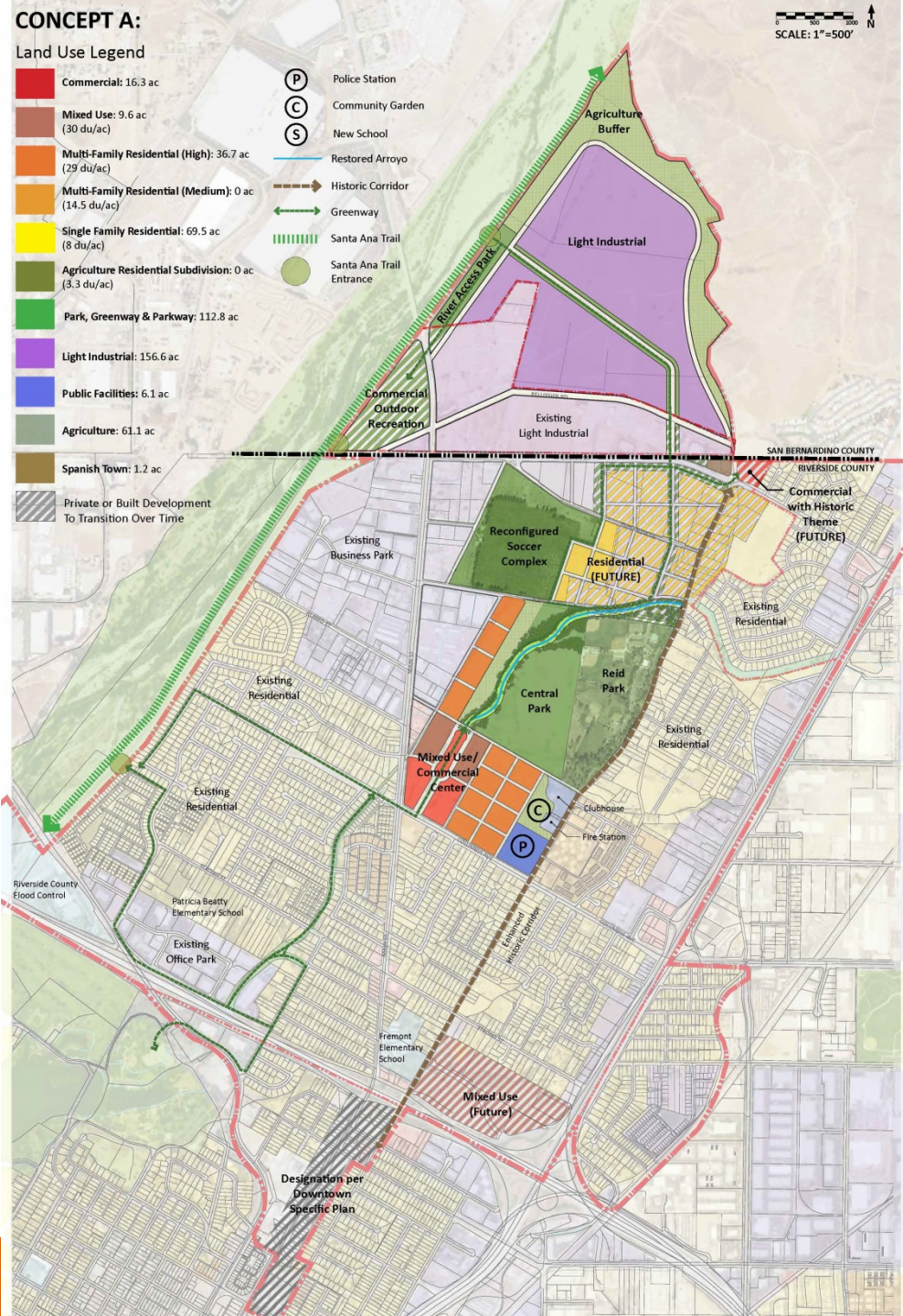
Key Issues for the Draft Plan

- Create Neighborhood benefits through Recreation, Agriculture, Housing and Commercial
- Create a Sense of Place and Community Identity Utilizing Sports and History
- Preserve and Enhance Springbrook Arroyo
- Balance Economic and Market Needs to Achieve a Higher Quality of Life
- Assure an Economic Return to RPU Ratepayers

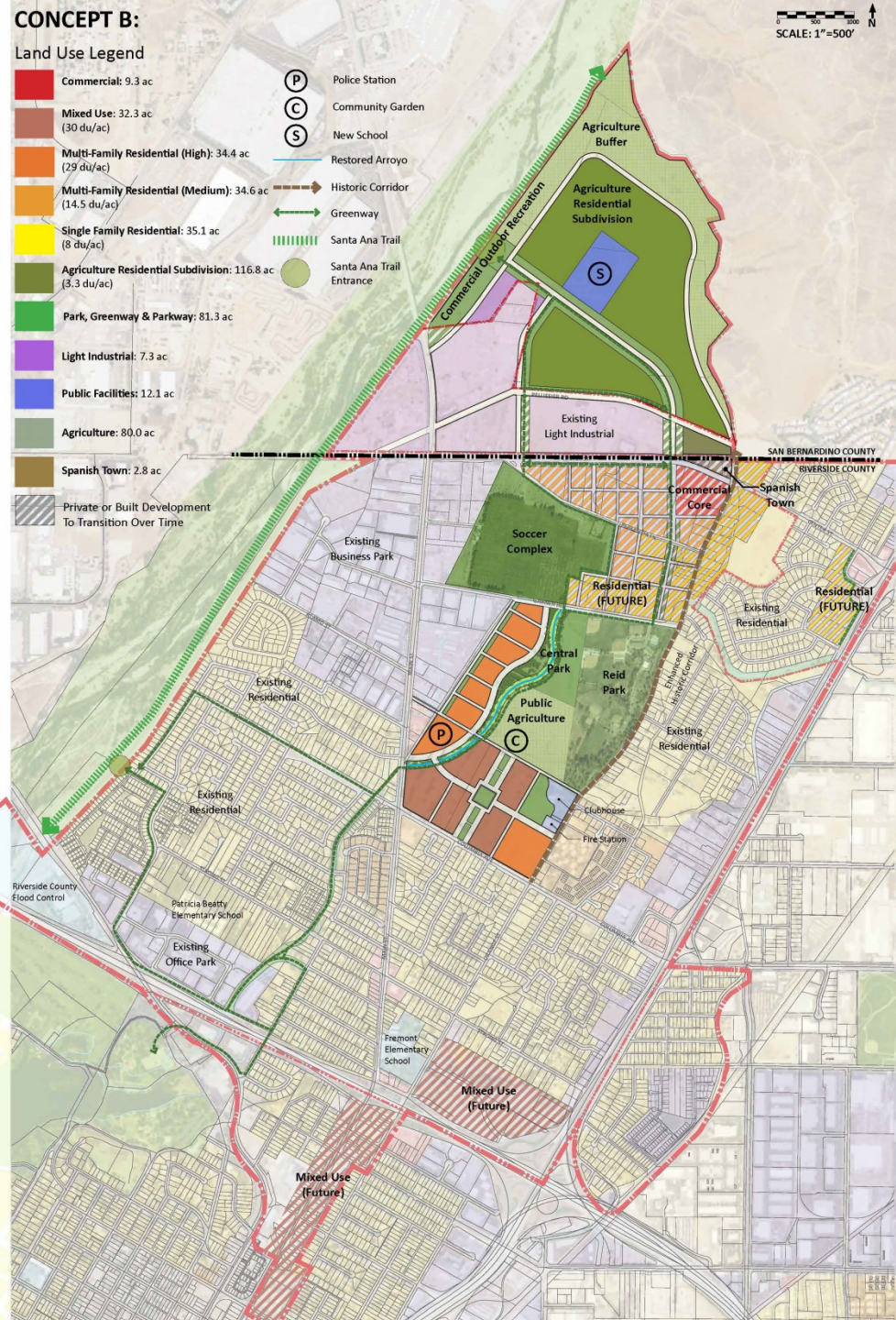
Conceptual Alternative Plans Presented October 2017



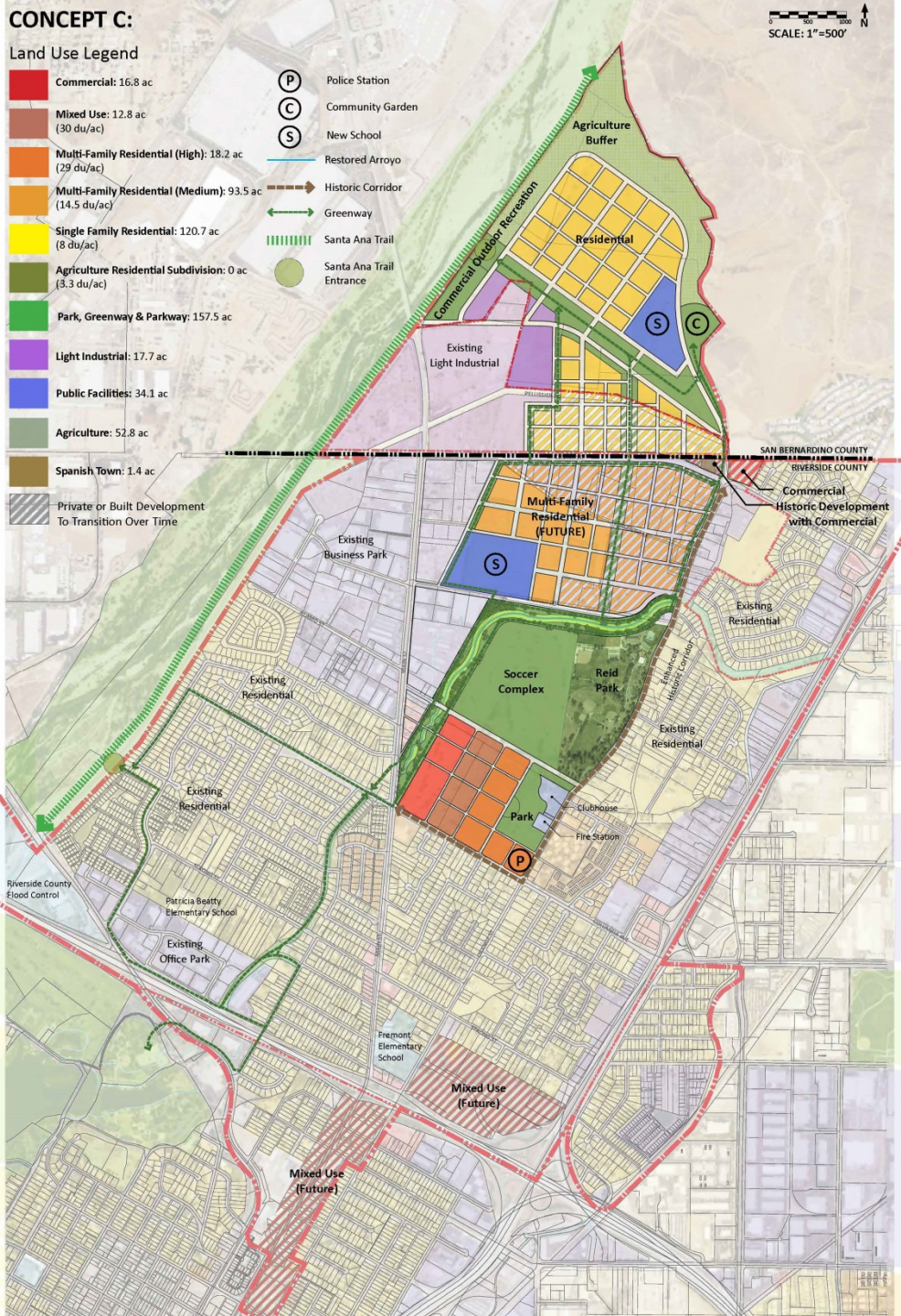
CONCEPT A



CONCEPT B



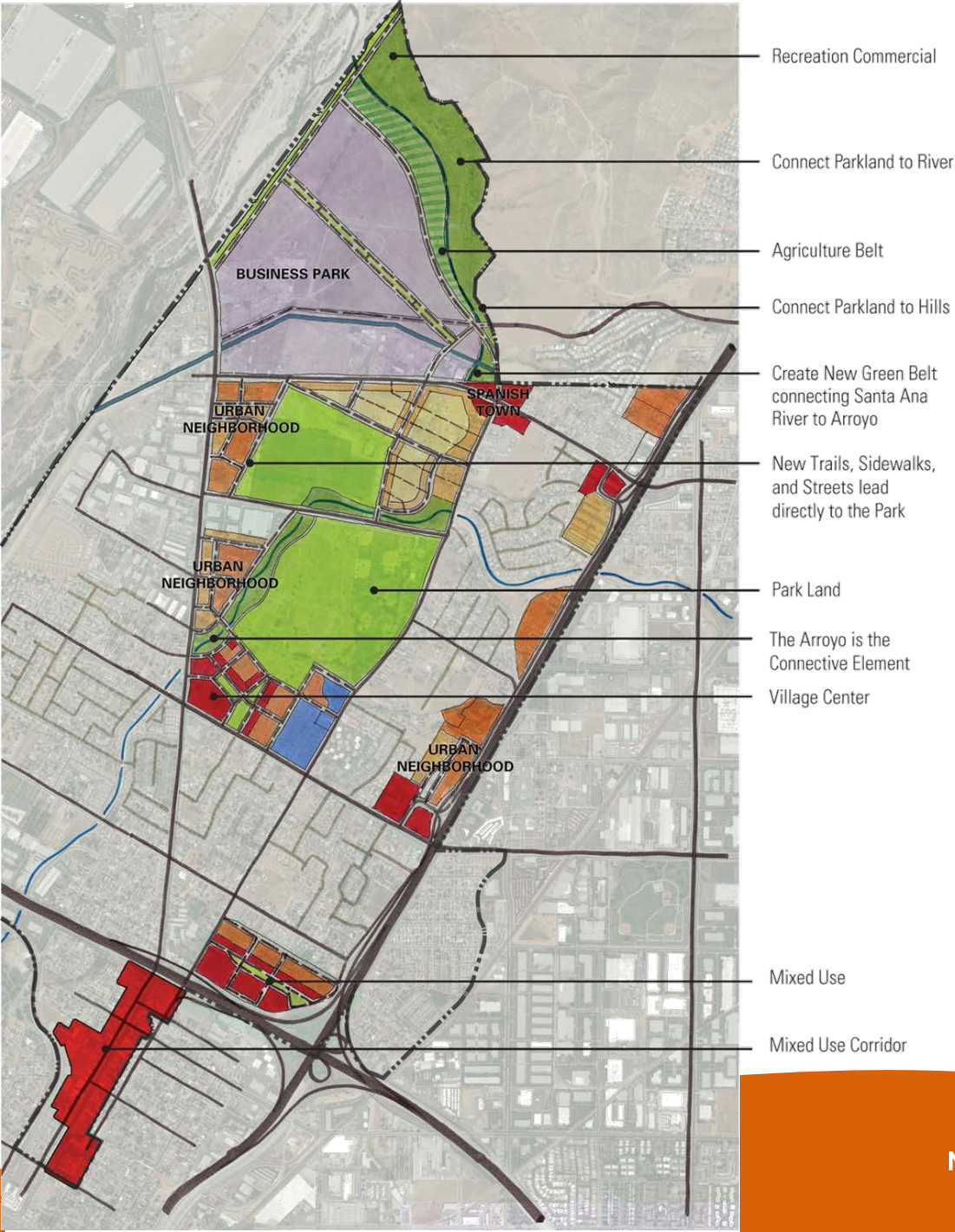
CONCEPT C



Draft Plan and Components



Framework Plan



Village Center



Park – Option 1



Park – Option 2



Spanish Town – Option 1



Spanish Town – Option 2





WORKSHOP PASSPORT



Northside Specific Plan



Station 1:
Draft Plan



Station 5:
West La Cadena Corridor



Station 2:
Existing Neighborhoods with
Streetscape and Mobility
Improvements



Station 6:
Open Space, Parks, and Trails



Station 3:
Northside Village Center



Station 7:
Pellissier Ranch




Station 4:
Spanish Town



Station 8:
Future Mixed-Use and
Residential Neighborhoods



Ways to Provide Input

**Northside Specific Plan**
An Interjurisdictional Project of the City of Riverside and City of Colton

Input Card
Station 8 - Future Mixed-Use and Residential Neighborhoods

For more information and to sign-up for announcements, visit: www.NorthsidePlan.com





Stamped Passport

NORTH SIDE		WORKSHOP PASSPORT	
Northside Specific Plan	 Station 1: Draft Plan	 Station 5: West La Cadena Corridor	
	 Station 2: Existing Neighborhoods with Streetscape and Mobility Improvements	 Station 6: Open Space, Parks, and Trails	
	 Station 3: Northside Village Center	 Station 7: Pellissier Ranch	
	 Station 4: Spanish Town	 Station 8: Future Mixed-Use and Residential Neighborhoods	

At Least Two Comment Cards

NORTH SIDE		Northside Specific Plan An Interjurisdictional Project of the City of Riverside and City of Colton	
Input Card Station 1 - Draft Plan			
<hr/> <hr/> <hr/> <hr/> <hr/> <hr/> <hr/> <hr/> <hr/> <hr/>			
<i>Your comments here!</i>			
<hr/> <hr/> <hr/> <hr/> <hr/> <hr/> <hr/> <hr/> <hr/> <hr/>			
For more information and to sign-up for announcements, visit: www.NorthsidePlan.com			

NORTH SIDE		Northside Specific Plan An Interjurisdictional Project of the City of Riverside and City of Colton	
Input Card Station 8 - Future Mixed-Use and Residential Neighborhoods			
<hr/> <hr/> <hr/> <hr/> <hr/> <hr/> <hr/> <hr/> <hr/> <hr/>			
<i>Your comments here!</i>			
<hr/> <hr/> <hr/> <hr/> <hr/> <hr/> <hr/> <hr/> <hr/> <hr/>			
For more information and to sign-up for announcements, visit: www.NorthsidePlan.com			

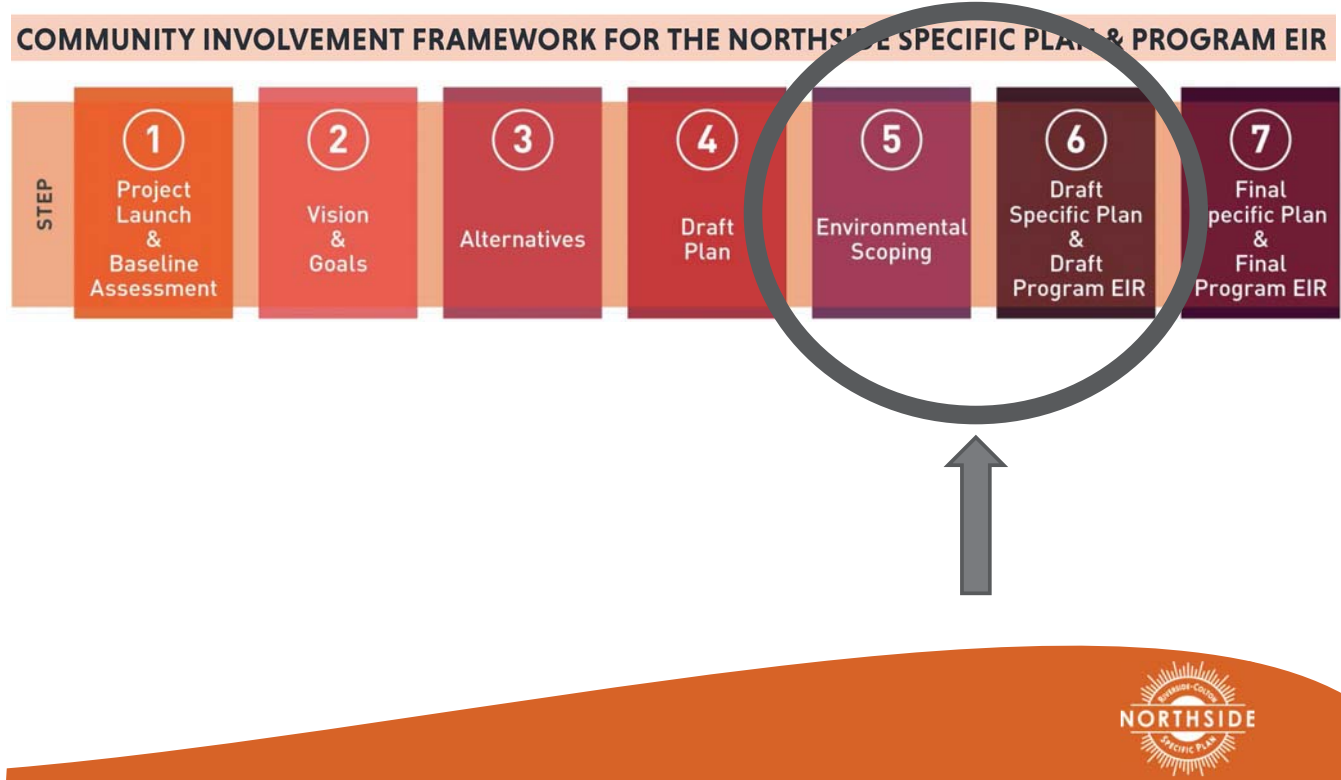


Tips for Productive Community Discussions

- Let one person speak at a time
- Help to make sure that everyone gets equal time to given input and ask questions
- Keep your input concise so that others have time to participate
- Actively listen to others and seek to understand their perspectives
- Offer ideas to address questions and concerns raised by others



Next Steps



Thank You