

CHURCHILL NAVIGATION SYSTEM

Police Department

City Council
October 16, 2018

RiversideCA.gov

BACKGROUND

1. December 13, 2016 – City Council accepted 2017 Urban Areas Security Initiative (UASI) Grant
 - A. \$2,369,600
 - B. Purchase Augmented Reality Mapping System (ATOM) Mission Computer
 - C. Provide solid aerial command and control platform



2

RiversideCA.gov

OVERVIEW

1. ARS Overview
2. Overlays
3. Basic Functions
4. Search & Speed Functions
5. Fire Mapping



3

RiversideCA.gov

CHURCHILL ARS

Augmented Reality mapping System (ARS) is an advanced airborne mission management system that offers significant improvement in situational awareness by displaying mapping information that incorporates three-dimensional, high resolution satellite and synthetic imagery.



4

RiversideCA.gov

ARS OVERLAYS

ARS Video Mode with Street Overlay



5

RiversideCA.gov

ARS OVERLAYS

ARS Video Mode with School Overlay



6

RiversideCA.gov

ARS OVERLAYS

ARS top-down Map Mode with Synthetic Imagery



RiversideCA.gov

7

BASIC FUNCTIONS

1. ARS is designed with three primary display modes:
 - A. Video mode
 - B. Map mode
 - C. Split mode



RiversideCA.gov

8

VIDEO MODE



RiversideCA.gov

9

MAP MODE



RiversideCA.gov

10

SPLIT SCREEN MODE

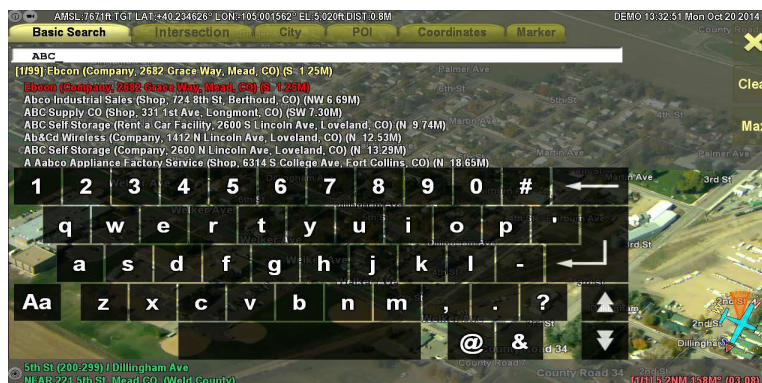


11

RiversideCA.gov

SEARCH & SPEED FUNCTIONS

1. Search functions can be used to locate specific addresses or a "sounds alike" function can be used for general locations



12

RiversideCA.gov

SEARCH & SPEED FUNCTIONS

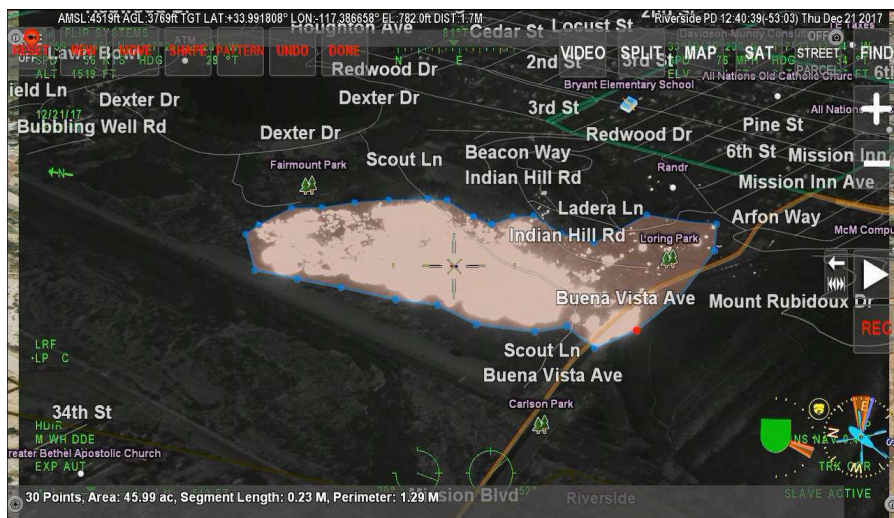
1. ARS tracks both the time and the distance a vehicle has traveled and displays a real-time average speed calculation on-screen.



13

RiversideCA.gov

SANTA ANA RIVER FIRE – DECEMBER 2017



14

RiversideCA.gov

RECOMMENDATIONS

That the City Council approve the purchase of an Augmented Reality Mapping System (ATOM) Mission Computer from Churchill Navigation of Boulder, Colorado in accordance with Purchasing Resolution No. 23256, Section 602(c) in the amount of \$128,977.50.

