



# Harvey Lynn Substation Site Expansion Project

Public Utilities Department

Board of Public Utilities  
October 22, 2018

RiversidePublicUtilities.com



1

## BACKGROUND

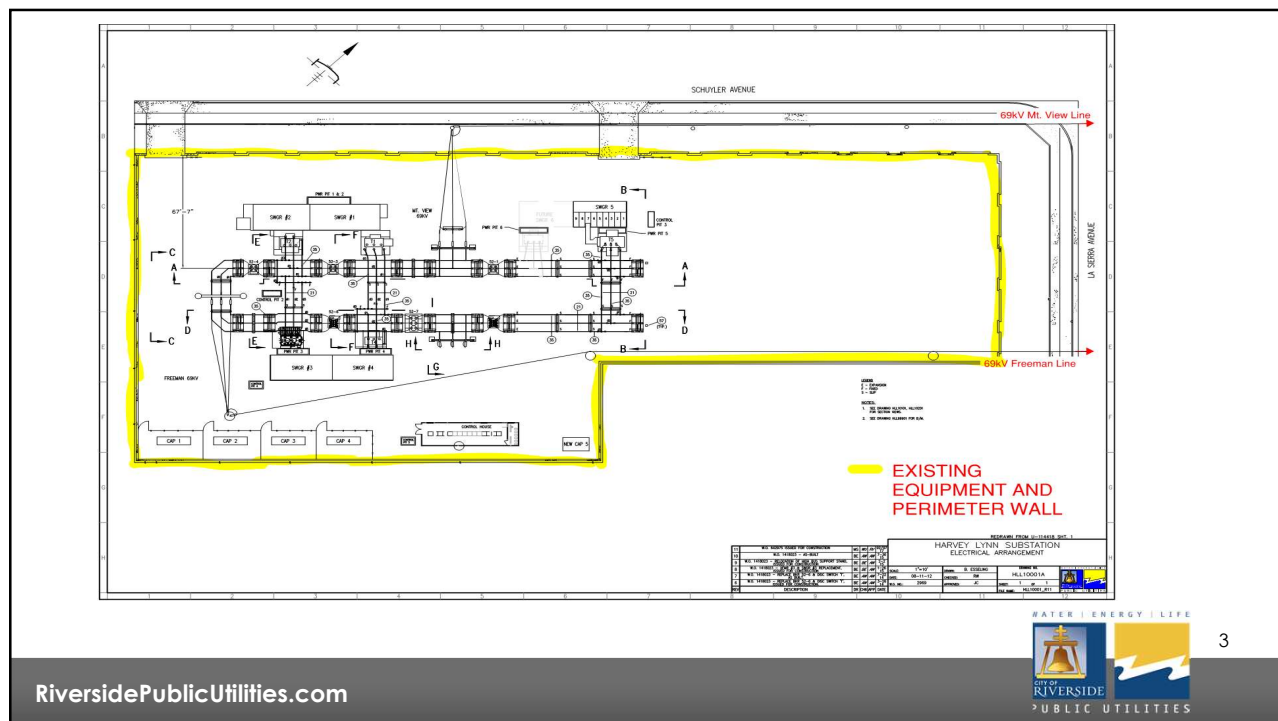
Harvey Lynn Substation:

1. Built in 1967 at intersection of Schuyler Street and La Sierra Avenue (11130 Schuyler Street).
2. Two transmission lines (69kV) and five power transformers (69-12kV).
3. Serves approximately 24,000 customers (15 circuits) mostly in La Sierra neighborhood.

RiversidePublicUtilities.com



2



3

## BACKGROUND

### Harvey Lynn Substation - Challenges:

1. Reliability - aging equipment, inherited design issues, and non-compliance with Riverside Transmission Reliability Project (RTRP) and RPU 2.0 Initiative.
2. Power Capacity – limited due to under rated 69kV bus and a need for additional equipment due to projected growth.
3. Existing Equipment Layout – complicates station's in-service operation during construction and installation needed for system wide optimum physical configuration.

4

## BACKGROUND

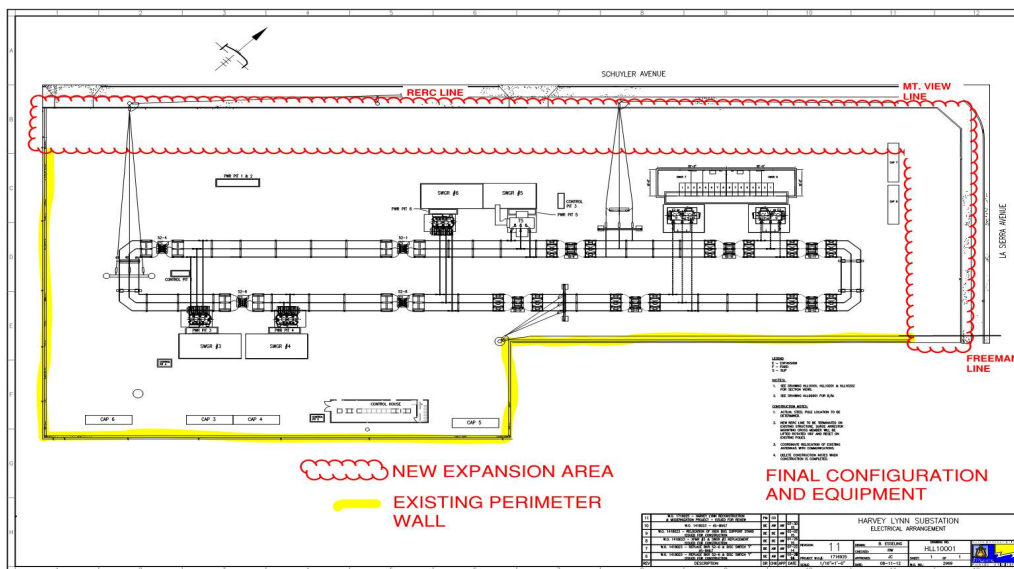
A site expansion is needed to:

1. Improve the existing 69kV bus.
2. Increase footprint for additional equipment resulting in the final configuration of three transmission lines and six transformers with higher capacity.
3. Perform construction without interruptions to customers and with minimum field switching.

RiversidePublicUtilities.com



5



RiversidePublicUtilities.com



6

## DISCUSSION

### Project Benefits:

1. Eliminate need for property purchase due to installation of block wall at existing property limits
  - A. Area footprint will increase by 9,405 sq. ft.
2. Enhance street beautification for neighborhood with a new decorative block wall.
3. Discourage transient camping and address resident safety concerns by reducing landscaped area outside the station.
  - A. New landscaping will feature drought tolerant plants and a cost-effective irrigation system.



7

RiversidePublicUtilities.com

## DISCUSSION – EXISTING BLOCK WALL



8

RiversidePublicUtilities.com

## DISCUSSION – PROPOSED BLOCK WALL



RiversidePublicUtilities.com



9

## DISCUSSION

### Work Scope Overview:

1. Design and construction of a new decorative block wall, two driveways, two automated gates, and final grading; and demolition of existing structures.
2. Design and construction of street and landscaping improvements in Schuyler Street and La Sierra Avenue.
3. Design and construction of intrusion detection and surveillance coverage in the expanded area.

RiversidePublicUtilities.com



10

## DISCUSSION

### Bid Process:

1. Bid No. 7565 was advertised on July 18, 2018
2. Bidding closed on August 28, 2018
3. Five bids were received
  - A. One company was deemed non-responsive (not all subcontractors were listed in bid)
4. James McMinn, Inc. of Grand Terrace, California was selected as the lowest responsive and responsible bidder.



11

RiversidePublicUtilities.com

## BID RESULTS

CONTRACTORS	AMOUNT	RANKING
Swanson Backhoe, Inc.	\$990,384	Non-responsive
<b>James McMinn, Inc.</b>	<b>\$1,074,986</b>	1st
Parsam Construction, Inc.	\$1,200,401	2nd
A.M. Ortega Construction, Inc.	\$1,332,087	3rd
Faris Construction Company	\$1,584,999	4th



12

RiversidePublicUtilities.com

## PROJECT BREAKDOWN

DESCRIPTION	AMOUNT
Design and Project Management	\$169,950
Construction Contract for Block Wall	\$1,074,986
Construction of Street and Landscaping Improvements	\$500,000
Construction of Security System Addition	\$71,453
Construction Inspection and Material Testing Services	\$90,000
Contingency (10%)	\$193,611
<b>Work Order Total</b>	<b>\$2,100,000</b>

## Recommendations

That the Riverside Public Utilities Board:

1. Award Bid No. RPU-7565 to James McMinn, Inc., of Grand Terrace, California, for the Harvey Lynn Substation Site Expansion Project in the amount of \$1,074,986; and
2. Approve Work Order No. 1822052 in the amount of \$2,100,000 which includes, but is not limited to, all design, construction, and contract administration, for the Harvey Lynn Substation Site Expansion Project.