



STORMWATER TRASH CAPTURE IMPLEMENTATION PLAN

Public Works Department

City Council
October 23, 2018

RiversideCA.gov

COMMITTEE RECOMMENDATION

The Trash Capture Implementation Plan approach was presented to the Utility Services / Land Use / Energy Development Committee on September 10, 2018. After discussion, the Committee unanimously:

1. Received and ordered filed the update on the Trash Capture Implementation Plan and State Trash Amendments; and
2. Forwarded the report to the City Council for review.



2

RiversideCA.gov

BACKGROUND

The State Trash Amendments require the City to fully capture trash from Priority Land Uses by choosing Track 1 or Track 2.

Track 1



Track 2

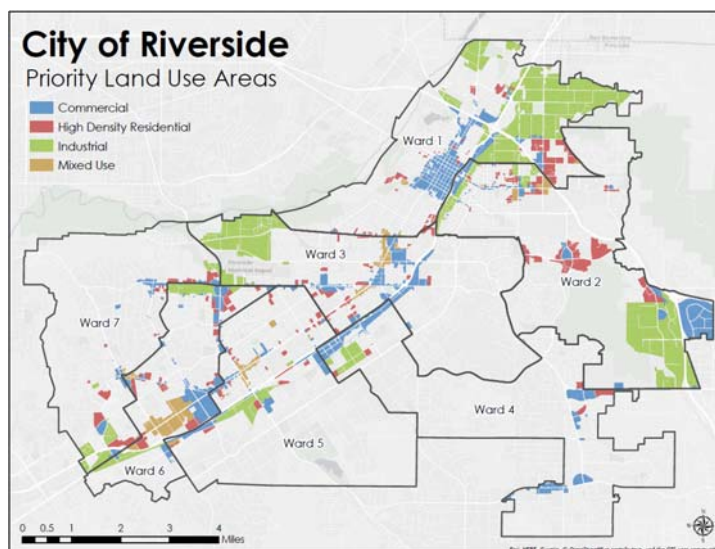


3

RiversideCA.gov

PRIORITY LAND USES

| PLU Type | Square Miles |
|--------------------------|--------------|
| Industrial | 6.1 |
| Commercial | 3.5 |
| High Density Residential | 2.0 |
| Mixed Use | 0.7 |
| Total | 12.4 |



4

RiversideCA.gov

TRACK 2 SELECTION

1. On October 24, 2017, the City Council selected Track 2 as the City's method to comply with the State Trash Amendments.
2. Since then staff has provided updates to the Utility Services/Land Use/Energy Development Committee in February 2018 and September 2018.



5

RiversideCA.gov

IMPLEMENTATION PLAN

1. Track 2 requires submission of an Implementation Plan to the Regional Water Board by November 30, 2018.
2. Implementation Plan will describe:
 - a) Final Priority Land Use areas;
 - b) How Full Capture System Equivalency will be demonstrated;
 - c) Combination of full capture controls selected; and
 - d) Monitoring Plan and Adaptive Management.



6

RiversideCA.gov

FULL CAPTURE SYSTEM EQUIVALENCY

The same amount of trash that would be captured in Priority Land Use areas if physical Full Capture Systems were installed must be captured throughout the City by any combination of other controls.

Example:

Instead of this:



You can do this:

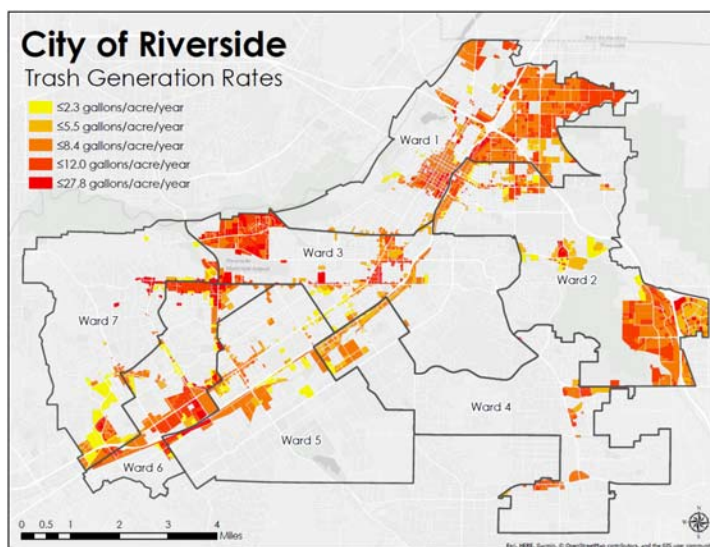


7

RiversideCA.gov

TRASH GENERATION PER PARCEL

| PLU Type | Trash (tons) |
|--------------------------|--------------|
| Industrial | 41.4 |
| Commercial | 25.4 |
| High Density Residential | 5.8 |
| Mixed Use | 4.6 |
| Total | 77.2 |



8



RiversideCA.gov

PROPOSED APPROACH



Street
Sweeping



Storm Drain
Maintenance



9

RiversideCA.gov

MONITORING PLAN

1. Demonstrates the effectiveness of the selected combination of controls.
2. Annual evaluation of program effectiveness (average load reduction of 10% per year for ten years).
3. If we are not meeting planned trash reduction then we may add additional trash control measures.



10



RiversideCA.gov

ADAPTIVE MANAGEMENT

Example: If the current combination of controls are capturing 60 tons of trash per year, then the City will have to implement other programs or install full capture systems that will account for the remaining 17.3 tons for years eight, nine, and ten.

| Year | FCSE Value | Year | FCSE Value |
|------|------------|------|------------|
| 1 | 7.7 tons | 6 | 46.4 tons |
| 2 | 15.5 tons | 7 | 54.1 tons |
| 3 | 23.2 tons | 8 | 61.8 tons |
| 4 | 30.9 tons | 9 | 69.6 tons |
| 5 | 38.7 tons | 10 | 77.3 tons |



11

RiversideCA.gov

RECOMMENDATIONS

That the City Council:

1. Approve the City of Riverside Trash Capture Implementation Plan approach; and
2. Authorize the City Manager, or his designee, to complete the final Implementation Plan and submit to the Santa Ana Regional Water Quality Control Board.



12

RiversideCA.gov