



Water Efficient Landscape & Irrigation Design Guidelines

Board of Public Utilities
November 26, 2018

RiversidePublicUtilities.com



1

PROPOSED GUIDELINES

1. Water Efficient Landscape and Irrigation Design Guidelines (A proposal to Amend the existing Citywide Design & Sign Guidelines)



RiversidePublicUtilities.com



2

BACKGROUND

1. November 2007 – Adopted Citywide Design and Sign Guidelines
2. April 1, 2015 – Governor's Executive Order B-29-15 mandated more stringent water efficient landscape and irrigation ordinance (WELO) requirements
3. December 1, 2015 – City adopted Ordinance No. 7310 to comply with state law. Ordinance updated Zoning Code Chapter 19.570 – *Water Efficient Landscaping and Irrigation (WELO)*



3

RiversidePublicUtilities.com

BACKGROUND

4. Early 2016: C&EDD and RPU initiated updates to the WELO Guidelines & Tools to implement WELO requirements that would:
 - a. Reflect best practices in landscape design
 - b. Make the City's WELO as customer friendly as possible
5. Sept. 20, 2018: Planning Commission recommended City Council approval of the WELO Guidelines



4

RiversidePublicUtilities.com

WELO GUIDELINES

1. Guidance for implementation of the WELO, Chapter 19.570 of the Zoning Code
2. Includes narrative with illustrative and photographic examples of best practices in water efficient landscape design
3. Guide for developers and design professionals to establish well designed water conserving landscapes



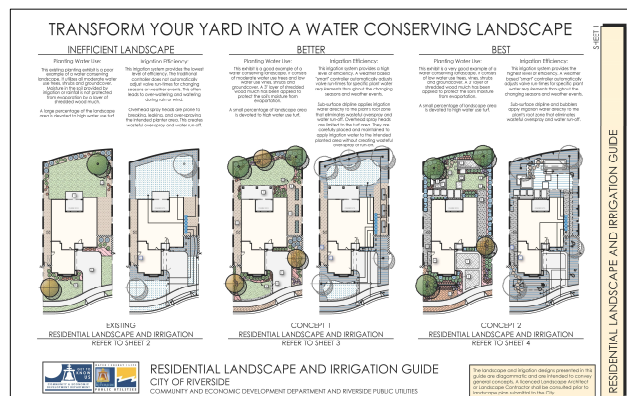
5

RiversidePublicUtilities.com

WELO GUIDELINES

WELO Guideline include:

- a. Planting & Irrigation Design
- b. Landscape Maintenance
- c. Definitions/Landscape Terms
- d. Climate Appropriate Plants for Riverside

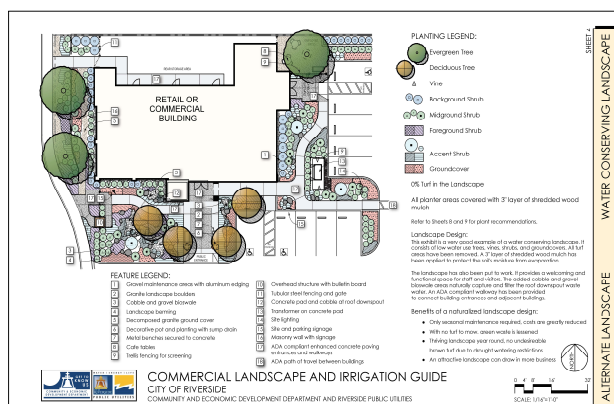


6

RiversidePublicUtilities.com

ADDITIONAL TOOLS

1. An updated "Administrative Landscape Plan Review Checklist"
2. Residential & Commercial Landscape Guides
3. Example plans for Residential & Commercial landscaping



RiversidePublicUtilities.com



7

SUMMARY

The Proposed Design Guidelines:

1. Are a tool for implementation of the WELO provisions, Chapter 19.570 of the Zoning Code;
2. Do not add requirements beyond Zoning Code WELO provisions;
3. Facilitate compliance with state landscape, irrigation requirements; and
4. Promote substantial water savings

December 18, 2018 – City Council will consider approval of WELO Guidelines

RiversidePublicUtilities.com



8

RECOMMENDATION

That the Board of Public Utilities receive and file a report on the amendment to the Citywide Design and Sign Guidelines to include Water Efficient Landscape and Irrigation Design Guidelines.