



# Riverside Community Shelter

P17-0103 (Modifications of Conditions of Approval)

Community & Economic  
Development Department

Planning Commission

Agenda Item: 3

January 10, 2019

RiversideCA.gov

## LOCATION MAP



RiversideCA.gov

## EXISTING SITE PHOTOS



3

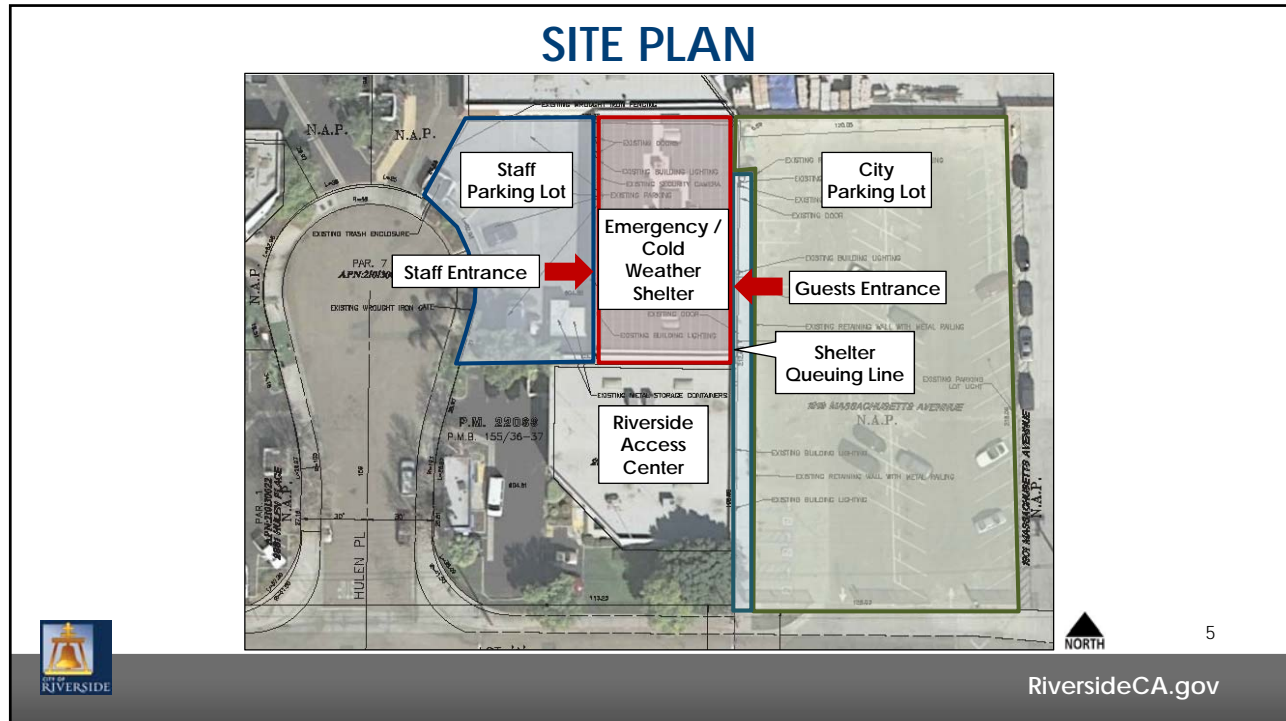
RiversideCA.gov

## ZONING MAP



4

RiversideCA.gov



## PROPOSED MODIFICATION - SUMMARY

- Cold Weather Shelter Operational Dates:
  - From: December 1<sup>st</sup> through March 30<sup>th</sup>
  - To: December 1<sup>st</sup> through April 15<sup>th</sup>
- Hours of Operation:
  - From: 5:30 PM to 8:30 AM
  - To: 4:00 PM to 8:30 AM
- Number of Cold Weather Shelter Beds:
  - From: 60 beds
  - To: 64 beds
  - Allows for a total of 129 beds between December 1<sup>st</sup> and April 15<sup>th</sup>



6

RiversideCA.gov

## PROPOSED MODIFICATIONS - SUMMARY

- Amend Security Plan:
  - Remove references to the Access Center
  - Require staff to monitor on-site activity
  - Provide a high-definition video monitoring system
  - Require meetings with neighboring property and businesses owners on an as-needed basis
- Removal of Conditions of Approval associated with:
  - The Access Center



7

RiversideCA.gov

## RECOMMENDATIONS

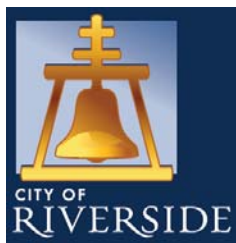
That the Planning Commission:

1. **DETERMINE** that the project is exempt from the California Environmental Quality Act (CEQA) pursuant to Section 15301 (Existing Facilities) of the CEQA Guidelines, as the project will not have a significant effect on the environment; and
2. **APPROVE** Planning Case P17-0103 (Modification of Conditions of Approval), based on the findings outlined in the staff report and summarized in the attached findings and subject to the recommended conditions.



8

RiversideCA.gov



# Riverside Community Shelter

P17-0103 (Modifications of Conditions of Approval)

**Community & Economic  
Development Department**

Planning Commission

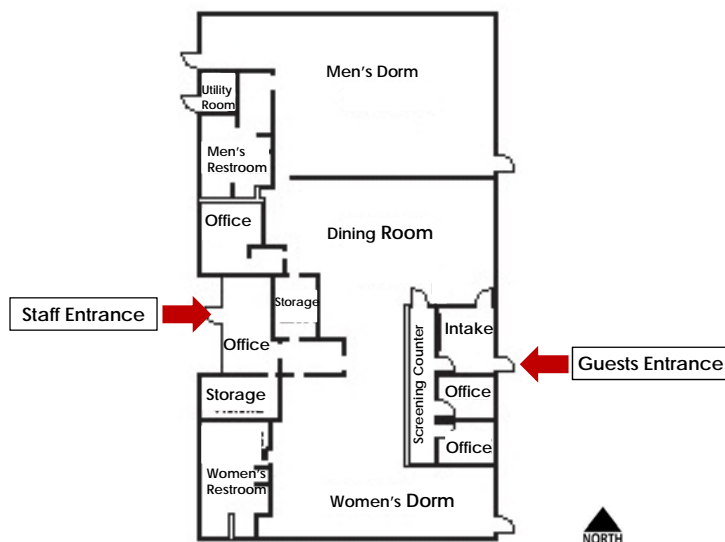
Agenda Item: 3

January 10, 2019

RiversideCA.gov

## FLOOR PLAN

REFERENCE ONLY



10

RiversideCA.gov



# GENERAL PLAN MAP

REFERENCE ONLY

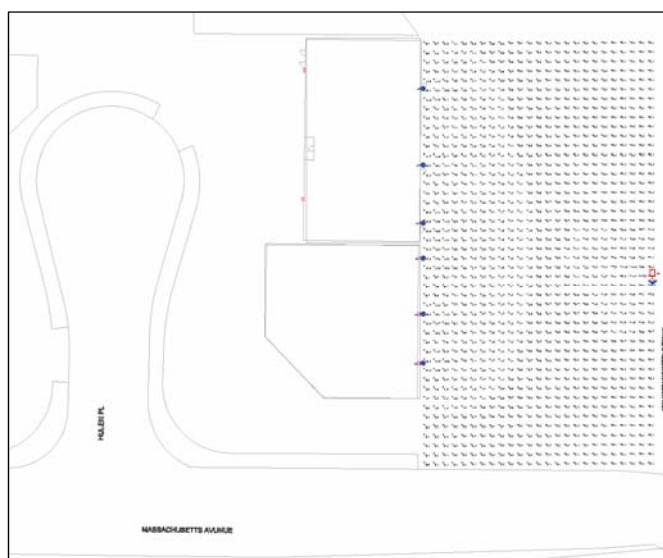


RiversideCA.gov

11

# SITE LIGHTING PLAN

REFERENCE ONLY



RiversideCA.gov

12