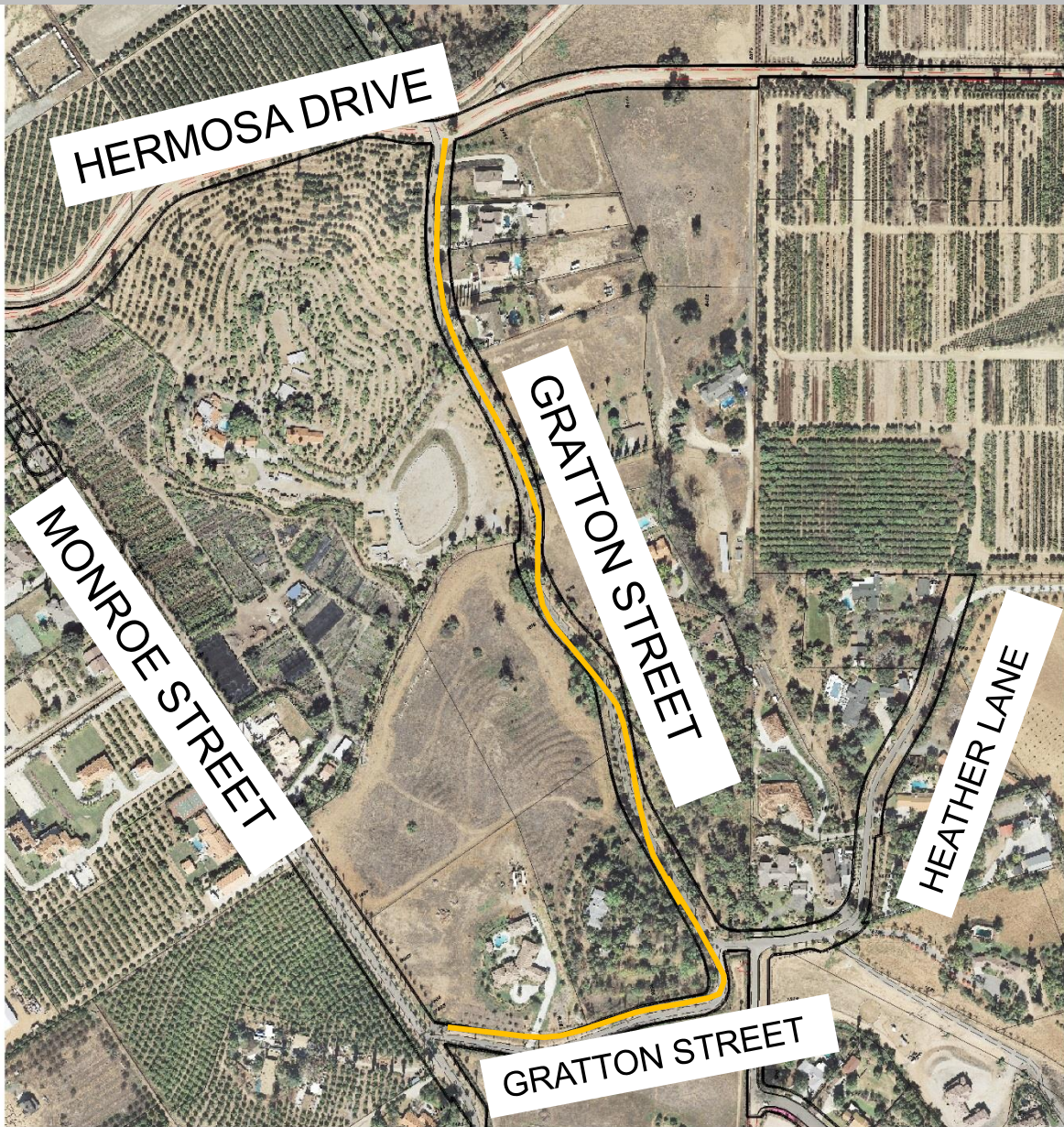


SPEED LIMIT ZONE ESTABLISHMENT ON GRATTON STREET FROM HERMOSA DRIVE TO MONROE STREET

Proposed 30 MPH Speed Limit Zone



Symbology

- Curb face
- - - Edge of Pavement
- - - Unpaved Roadway
- - - Edge of Pavement / Berm
- ROW Line
- Parcel Line
- Assessor Parcel Line
- - - Project Limits Boundary



1 inch = 375 feet
February 14, 2019
Aerial photos taken February 2012. The City of Riverside makes no warranty on the accuracy or content of the data shown on this map. This map should not be reproduced or modified.
© Copyright 2013, City of Riverside, California
Printed by: BELLCORPO