



RIVERSIDE PUBLIC UTILITIES

Board Memorandum

BOARD OF PUBLIC UTILITIES

DATE: MARCH 25, 2019

GENERAL MANAGER'S REPORT

SUBJECT: MONTHLY WATER REPORT – JANUARY 2019

In January, RPU's total water production was 4,498 acre-feet (AF) as shown in Figures 1 and 2. RPU's annual rolling production totals by month are shown in Figure 3. In January, the peak water usage on the potable water distribution system was 54 million gallons per day (MGD) and occurred on January 4, 2019 as shown on Figure 4.

RPU's potable water supply, including deliveries to Western Municipal Water District (WMWD), totaled 4,125AF, which decreased from last January by 857 AF. Under the Cooperative Agreement for Water Production and Conveyance with WMWD, 557 AF of potable water was delivered to WMWD as shown in Figures 1 and 2.

In January, RPU's Gallons Per-Capita Per Day (GPCD) was 121, and its Residential Gallons Per-Capita Per Day (R-GPCD) was 70 gallons. RPU's annual rolling GPCD was 187, which is below the compliance target specified in SB X7-7 (i.e. 20% reduction by 2020) of 213. RPU's annual rolling R-GPCD was 111.

Weather conditions within the City of Riverside showed that January of 2019 was cooler by 6.5 degrees from January last year and experienced 2.31 inches of rainfall compared to 1.66 inches from January 2018.

There were no significant events for the water system in January 2019.

Basin Groundwater Levels

Groundwater levels in the Bunker Hill, Rialto-Colton, and Riverside North basins are continuing to show a long-term declining trend, while groundwater levels in the Riverside South Basin remain relatively stable as shown in Figure 5.

Specifically, groundwater water levels in the Bunker Hill Basin are approximately 1 foot lower as compared to January of last year. Water levels in the Rialto-Colton and Riverside North basins are 3 and 8 feet lower respectively, as compared to January of last year. Water levels in the Riverside South Basin are 1 foot lower as compared to January of last year. Figure 6 is a Vicinity Map of the groundwater basins and key monitoring wells.

FIGURE 1: RPU WATER - TOTAL PRODUCTION REPORT-FISCAL YEAR 2018 -2019

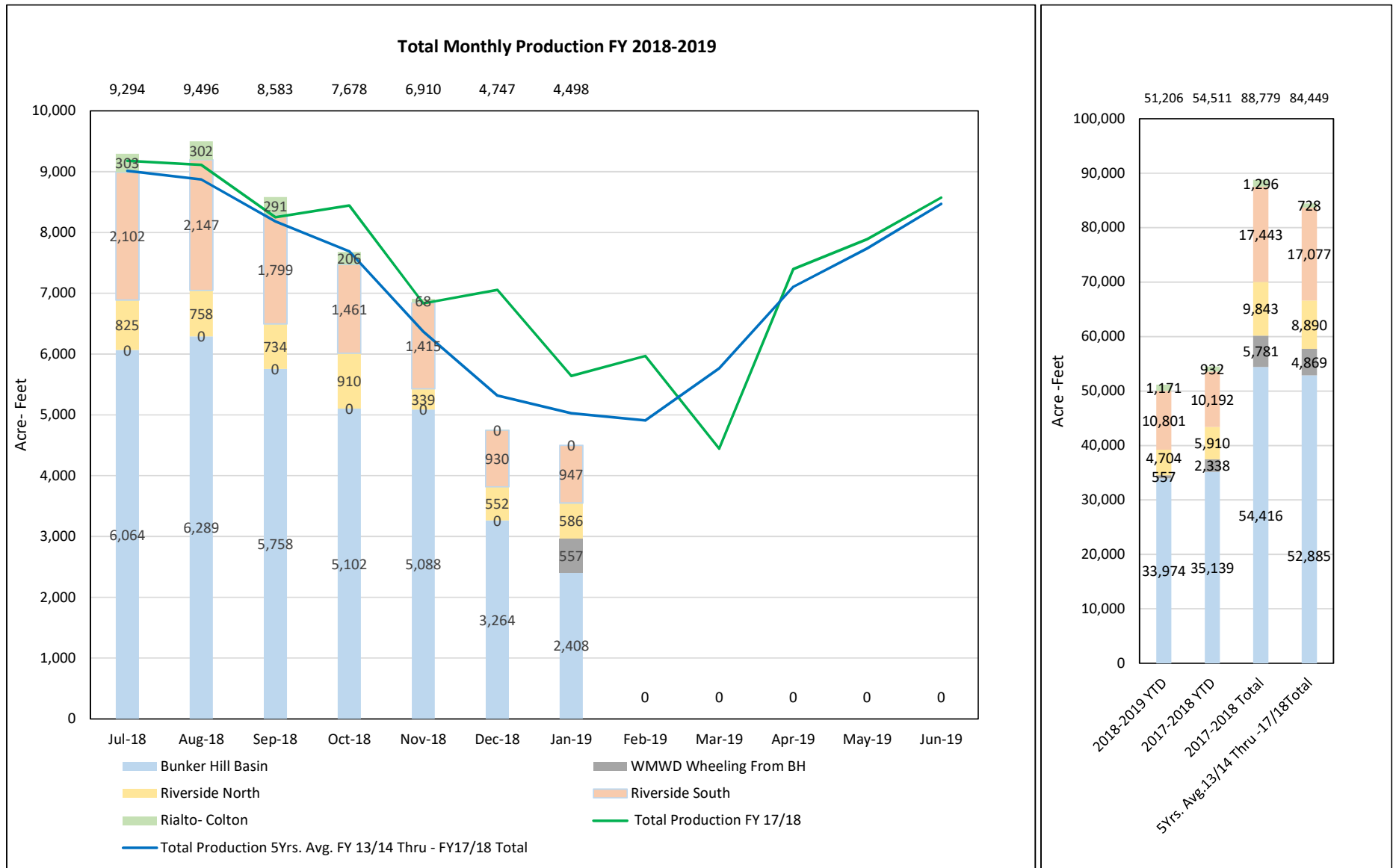


FIGURE 2: RPU WATER - TOTAL PRODUCTION REPORT -CALENDAR YEAR 2019

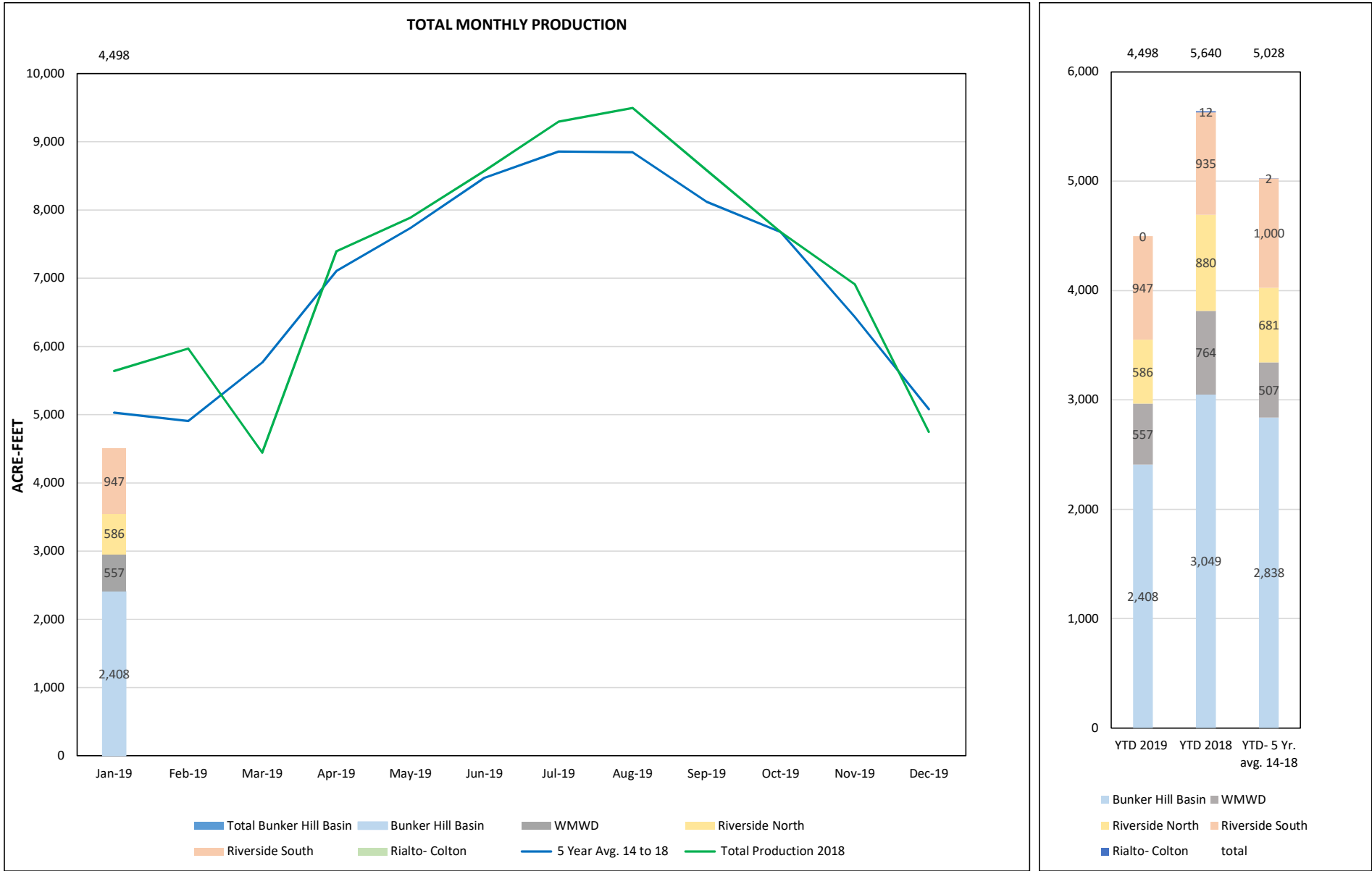


FIGURE 3: RPU WATER - TOTAL PRODUCTION REPORT

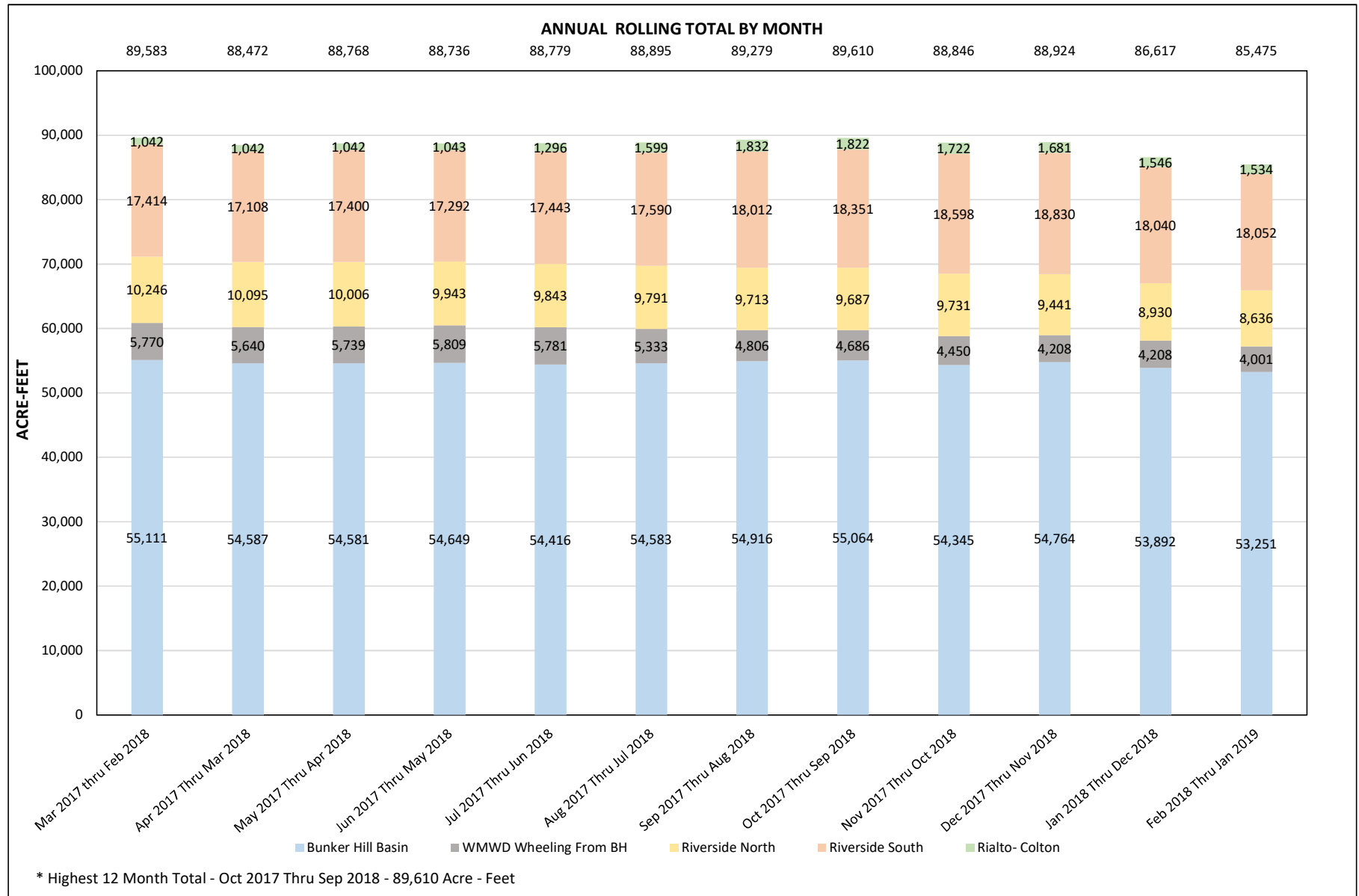


FIGURE 4: RPU WATER- TOTAL MONTHLY CONSUMPTION REPORT

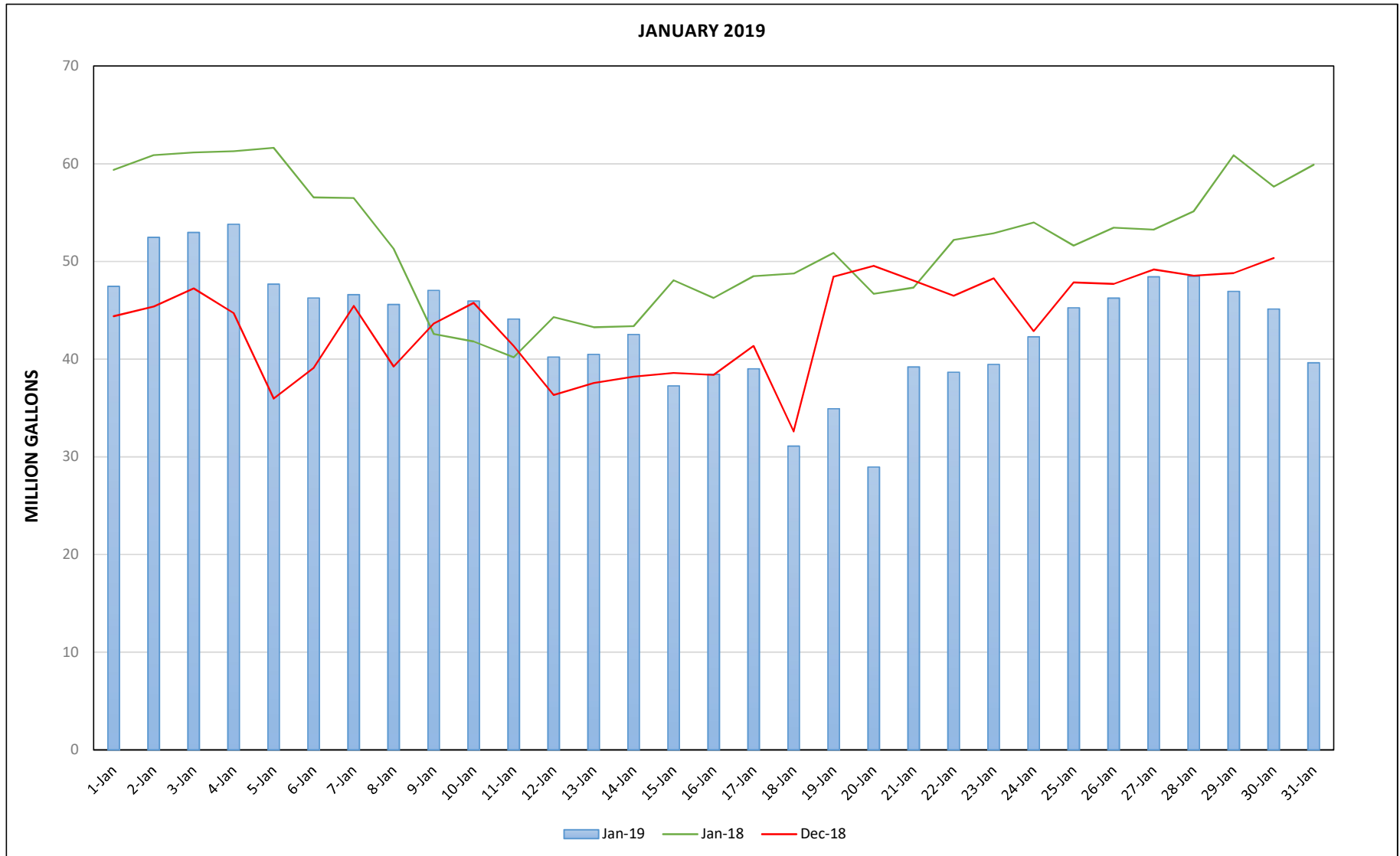
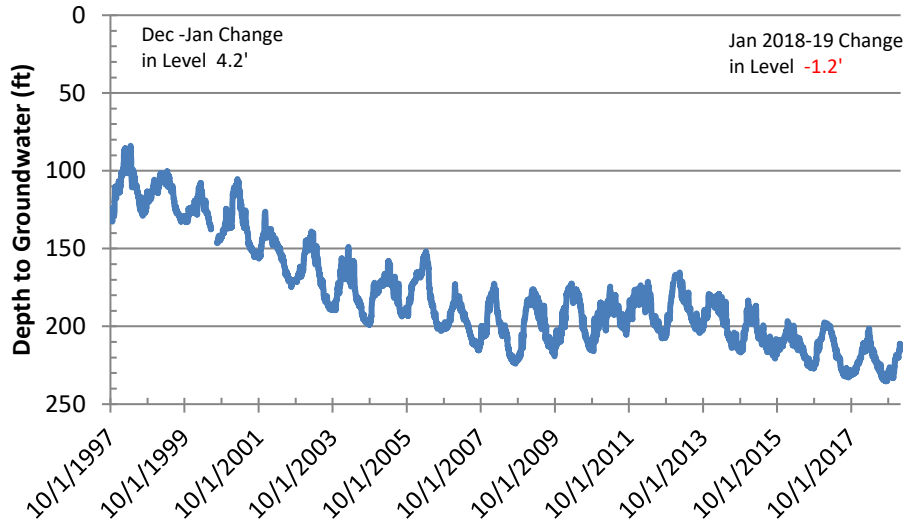
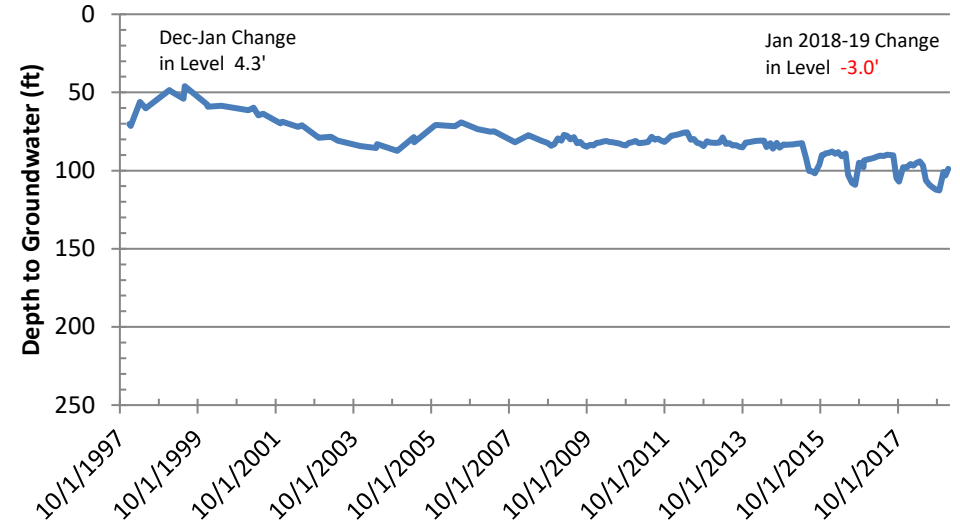


Figure 5: Basin Groundwater Levels

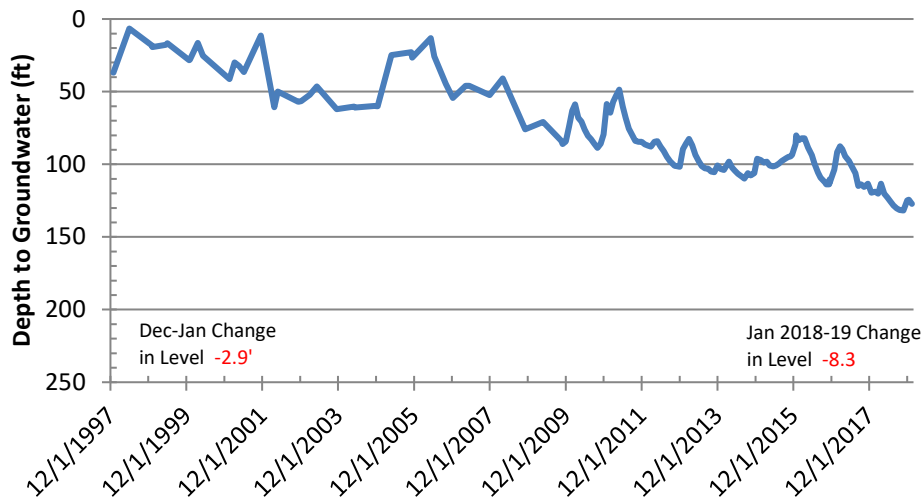
Bunker Hill Basin Sierra High School (USGS)



Rialto-Colton Basin Johnson 1



Riverside North Basin Flume 5



Riverside South Basin Cunningham

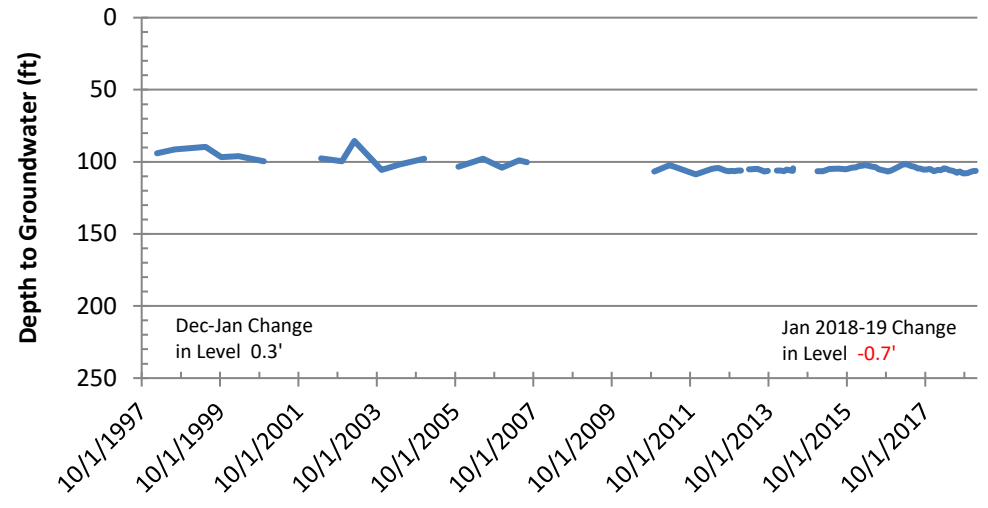


Figure 6: Groundwater Basin Vicinity Map

