



## TRAFFIC CONTROL ENHANCEMENTS ALONG VICTORIA AVENUE

Public Works Department

Transportation Committee  
April 11, 2019

RiversideCA.gov

### BACKGROUND

1. On February 8, 2018 a resident requested that the Transportation Committee investigate use of a roundabout at Victoria Avenue and Washington Street.
2. On May 10, 2018, the Transportation Committee requested that Staff prepare a report to preliminarily assess a roundabout at this intersection.



2

RiversideCA.gov

## BACKGROUND

3. On November 8, 2018 staff presented an initial report on traffic control alternatives to the Transportation Committee.
4. Staff was requested to explore alternatives with residents that are low-cost, easily implementable, and fit within the historic context of Victoria Avenue.



3

RiversideCA.gov

## DISCUSSION

1. Victoria Avenue was commissioned in 1892 and designed by Franz Hosp.
2. The landscaping along Victoria Avenue helps to define the historic character of the roadway.
3. Victoria Avenue Forever is a non-profit organization: plantings, funding, caregiving for the historic roadway.



4



RiversideCA.gov

## NEIGHBORHOOD OUTREACH

1. Meeting with neighborhood leaders to discuss traffic control alternatives on December 6, 2018  
(Representatives from Victoria Avenue Forever were present).
2. The meeting identified a set of priorities for the intersection to inform collaborative development of alternatives and improvements.



5

RiversideCA.gov

## GUIDING PRIORITIES FOR INTERSECTION

1. Easing congestion for local traffic while not encouraging cut-through traffic;
2. Expanding Pedestrian and Bicycle safety;
3. Preserving dedicated trees and vegetation where possible; AND
4. Highlighting Victoria Avenue's historic nature.



6

RiversideCA.gov

## SPECIFIC IMPROVEMENTS IDENTIFIED

1. High visibility crosswalk across the north leg of the intersection;
2. High visibility green bicycle 'conflict zone' striping at the eastbound approach;
3. Provide signage advising motorists they are approaching historic Victoria Avenue; and
4. Construct a dedicated right hand turn and merging lane, primarily widening southbound Washington Street within the public right of way, to reduce delays for motorists on Victoria Avenue.



7

RiversideCA.gov

## SHARED VISIONING PROCESS

1. Staff committed to preparing a concept design based on the team's sketch and a follow-up meeting in the field.



8



RiversideCA.gov

## SHARED VISIONING PROCESS

2. Follow-up meeting took place in the field on January 25; a refined concept illustration was presented.
3. The potential improvements were reviewed against existing vegetation, pavement widths, and signage.



Several team members commemorate the field visit with a photos (Shown right to left: Sally Mazzetti, Bill Wilkman, Darleen DeMason, Staff representative Nathan Mustafa)

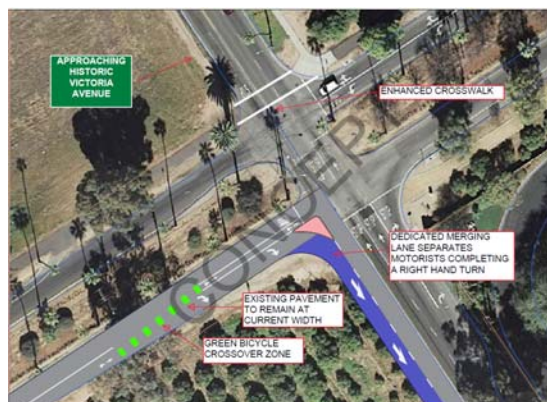


9

RiversideCA.gov

## PREFERRED ALTERNATIVE

1. Dedicated turning / merge lane on Washington Street;
2. Little to no impact along Victoria Avenue (new pavement shown in blue);
3. Use of paint to start for the turning 'island'.



10



RiversideCA.gov

## COSTS

1. Cost to implement green bicycle conflict zone, crosswalk, refreshed striping and signage: \$5,000 and can be completed immediately.
2. Cost to implement merge / turning lane: \$40,000 - \$50,000; recommended for inclusion in CIP budget.



11

RiversideCA.gov

## RECOMMENDATIONS

That the Transportation Committee:

1. Receive and file information regarding traffic control at the intersection of Victoria Avenue and Washington Street;
2. Direct staff to plan for the construction of traffic control improvements at Victoria Avenue & Washington Street; and
3. Direct staff to further assess traffic patterns and land uses within the Greenbelt as part of the upcoming General Plan Update.



12

RiversideCA.gov