

DESIGN BUILD AGREEMENT WITH CDM SMITH, INC., FOR REGIONAL WATER QUALITY CONTROL PLANT IMPROVEMENTS

Public Works Department

City Council
April 16, 2019

RiversideCA.gov

BACKGROUND

1. 2009 – City and Camp Dresser & McKee Inc. (now CDM Smith, Inc.) entered into engineering design services contract for WQCP Phase 1 Rehab & Expansion project
 - a. CDM Engineering contract - \$19.8 million
 - b. Construction contract - \$192 million
2. During construction phase errors were identified for project engineering design work
 - a. Estimated \$400k to \$500k of additional project work and costs
 - b. Overall project change orders came in less than 5% of the construction contract amount – very good

2



RiversideCA.gov

DESIGN-BUILD PROJECT PROPOSAL

1. CDM Smith, Inc., has offered design-build services as compensation to City for design error costs
2. Staff negotiated a design-build proposal to construct required improvements to correct system problems that will result in a more efficient operation
 - a. CDM Smith has both a design and a construction group
 - b. Value of project if Bid - \$3,998,247
 - c. Value of CDM proposal - \$3,648,460
 - d. Cost benefit to offset design errors - \$349,460 or 8.7% reduction



3

RiversideCA.gov

BENEFITS OF PROPOSAL

1. In exchange, City to release claim for damages from WQCP Phase 1 Rehab & Expansion project contract design errors
 - a. Project improvements are necessary and in best interest of the City
 - b. City will be compensated much faster than litigating with CDM Smith
 - c. Design-build model to save costs for both parties
 - d. Project cost below expected design-bid-build cost



4

RiversideCA.gov

BIO-METHANE GAS SYSTEM

1. Improvements and repairs to bio-methane gas storage and distribution system for increased capacity to handle organics, energy production and limit flaring to atmosphere



Bio-methane gas flare



Bio-methane gas storage



5

RiversideCA.gov

MEMBRANE BIOREACTOR SYSTEM

1. Improvements and repairs to membrane bioreactor system roof and wastewater influent channel for improved performance



Membrane bioreactor system



6

RiversideCA.gov

DISINFECTION SYSTEM

1. Installation of back-up chemical feed system in case of power outage



Disinfection system chlorine contact tank

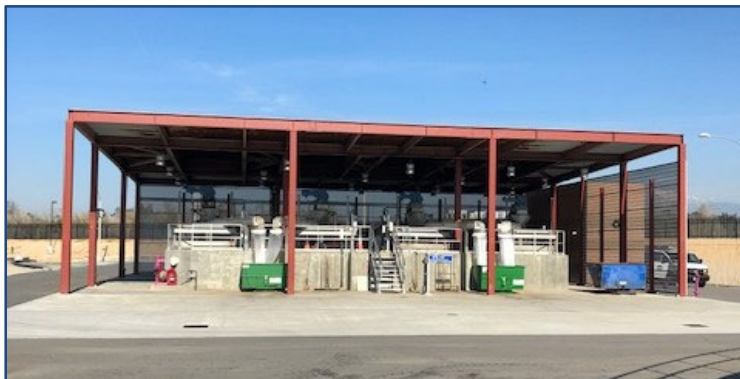
7



RiversideCA.gov

FINE SCREEN SYSTEM

1. Improvements and repairs to fine screen system roof and installation of odor & corrosion control unit



Fine screen system

8



RiversideCA.gov

RECOMMENDATIONS

That the City Council:

1. Approve the Design-Build Agreement with CDM Smith. Inc., of Los Angeles, California, for the Regional Water Control Plant Follow-Up Design-Build Services in the amount of \$3,648,460; and
2. Authorize a 7.5% change order authority up to \$273,634, for a total amount of \$3,922,094, to cover integration of the new equipment into the RWQCP Supervisory Control and Data Acquisition System and other minor construction work changes; and
3. Authorize the City Manager, or his designee, to execute the Design-Build Agreement, including making minor and non-substantive changes.



9

RiversideCA.gov