

## Riverside County Transportation Commission Workshop

January 31, 2019

1

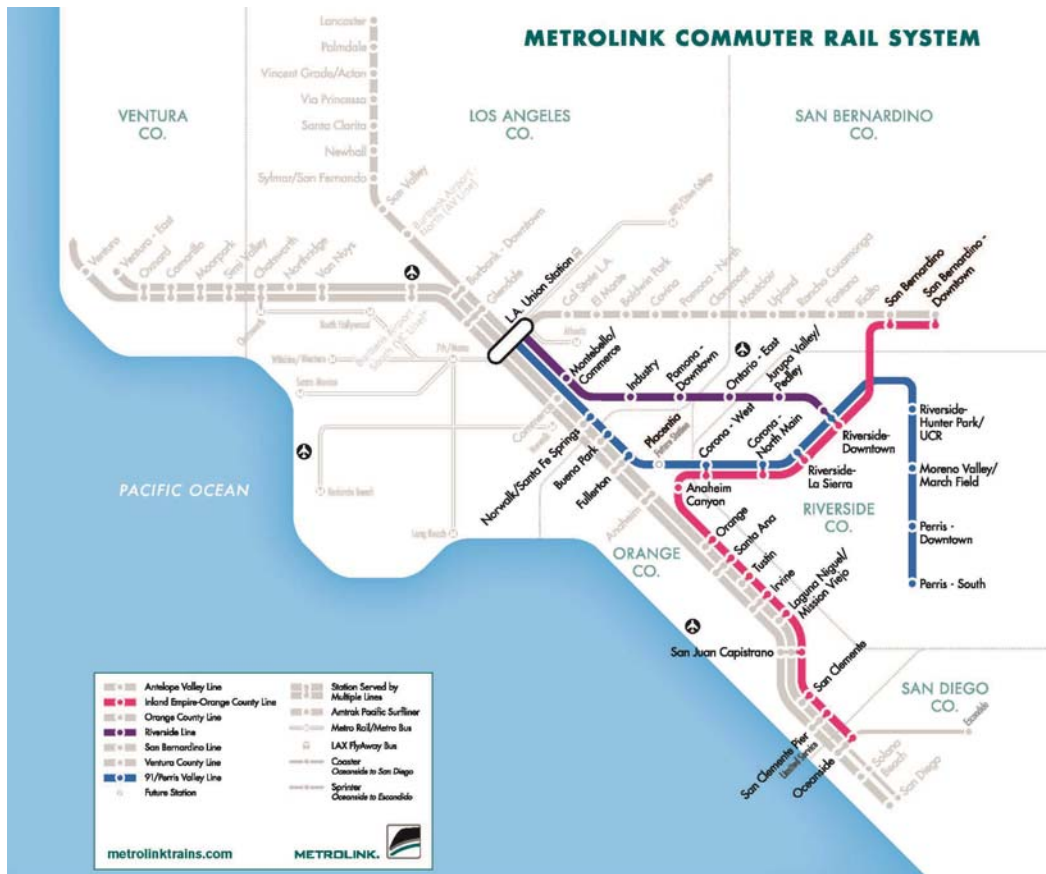


### **CEO Stephanie Wiggins with Board Members**

- Joined Metrolink on January 2, 2019
- Priorities as CEO

2

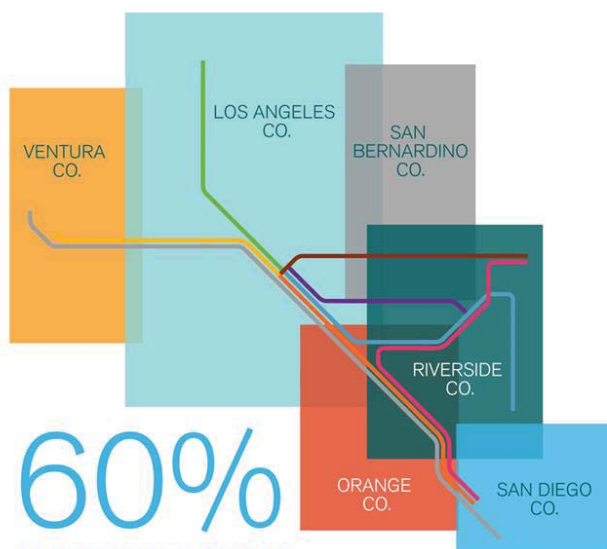




## Metrolink In Riverside County

- Three lines serving the county
- 51 trains providing service in the county
- 10 stations
- Riders connect to LA, San Bernardino, Orange and San Diego counties

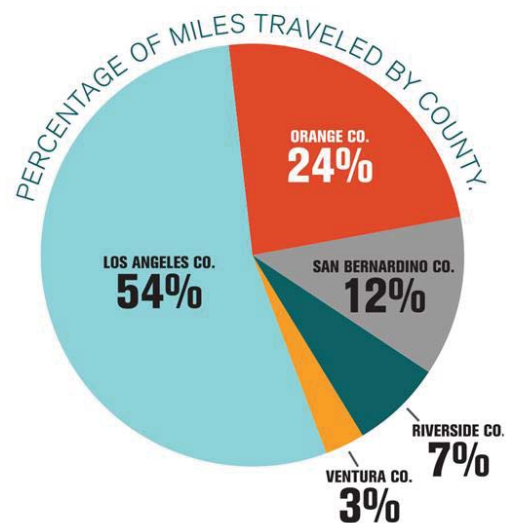
3



### OF METROLINK RIDERS TRAVEL ACROSS COUNTY LINES

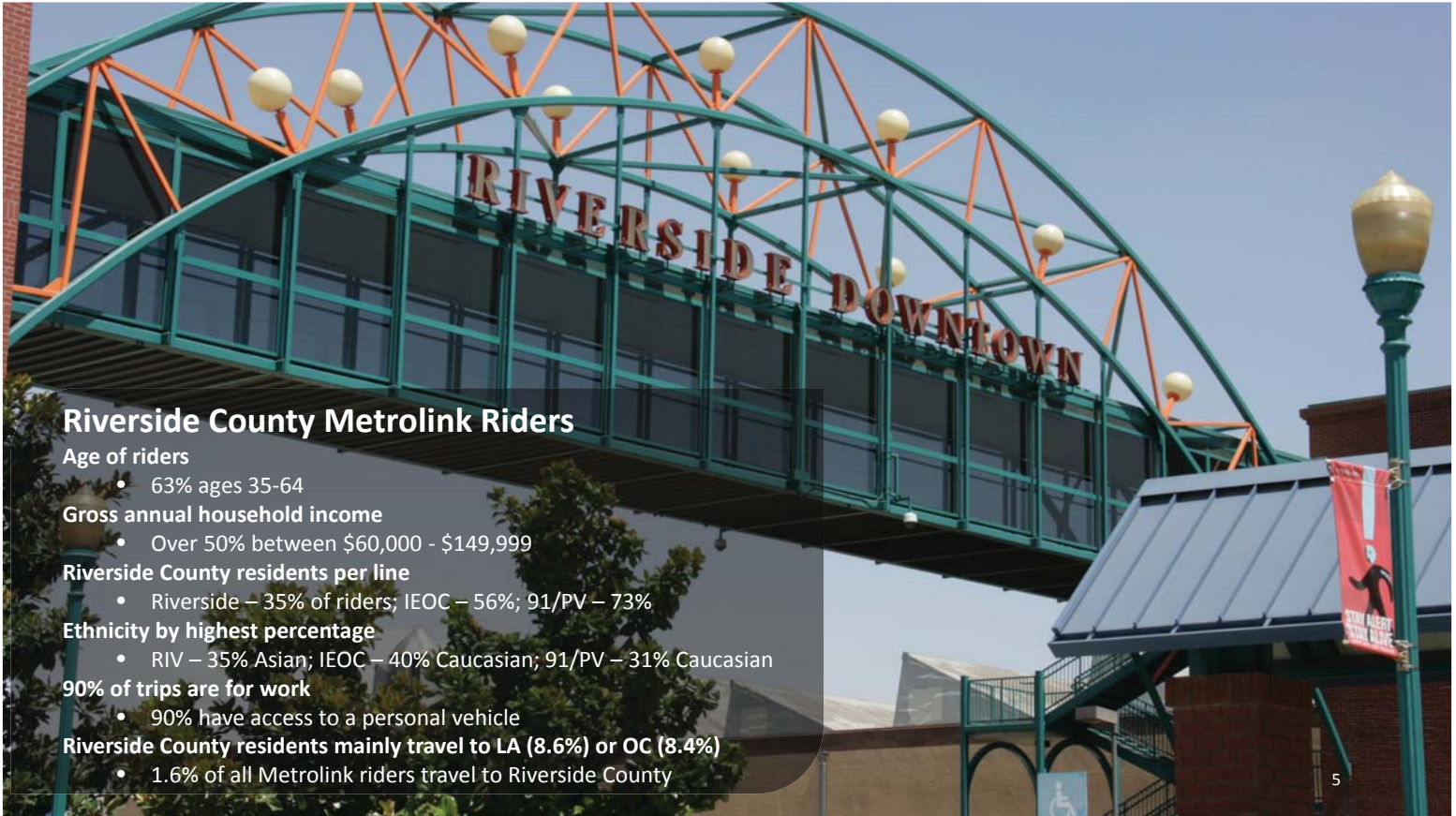
METROLINK CARRIES PASSENGERS ACROSS CITY AND COUNTY LINES TAKING RIDERS FROM CITY-TO-CITY, COUNTY-TO-COUNTY FOR A REGION-WIDE COMMUTE.

EACH YEAR METROLINK TRAINS TRAVEL  
**2.7 MILLION MILES**



4

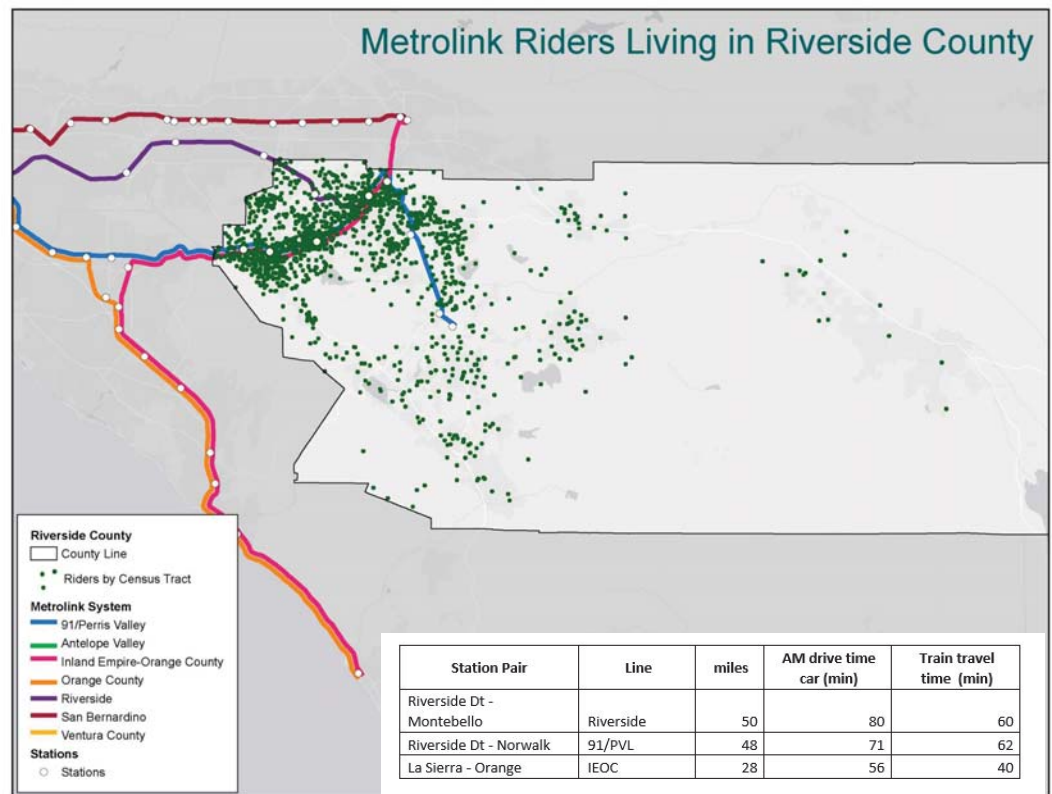






## Riverside County Rider Demographics

- Average ridership length is 5.2 years
- Average miles between origin & destination:
  - RIV (50.2 mi)
    - 20-Minute Savings
  - 91/PV (47.8 mi)
    - 9-Minute Savings
  - IEOC (27.7 mi)
    - 16-Minute Savings
- Most riders live near service areas

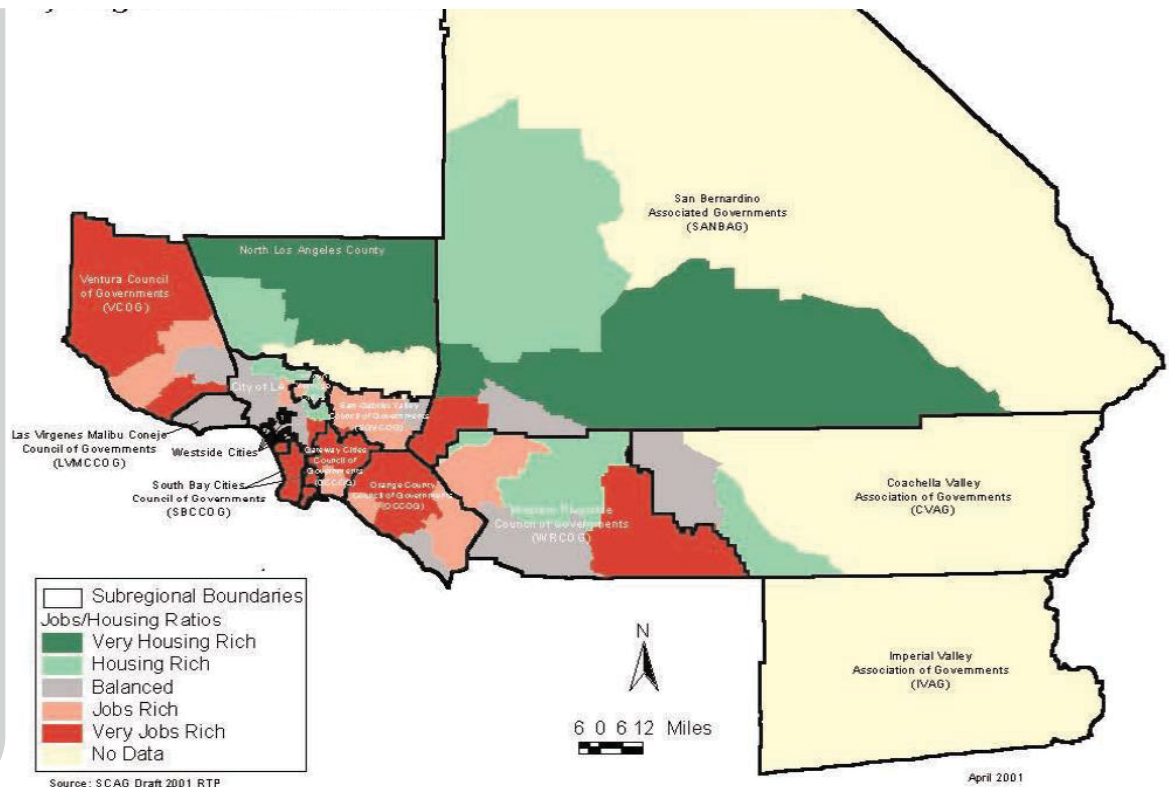


7

## Metrolink's importance in Riverside County

- 4<sup>th</sup> largest county in California
- Steady growth → affordable housing and jobs

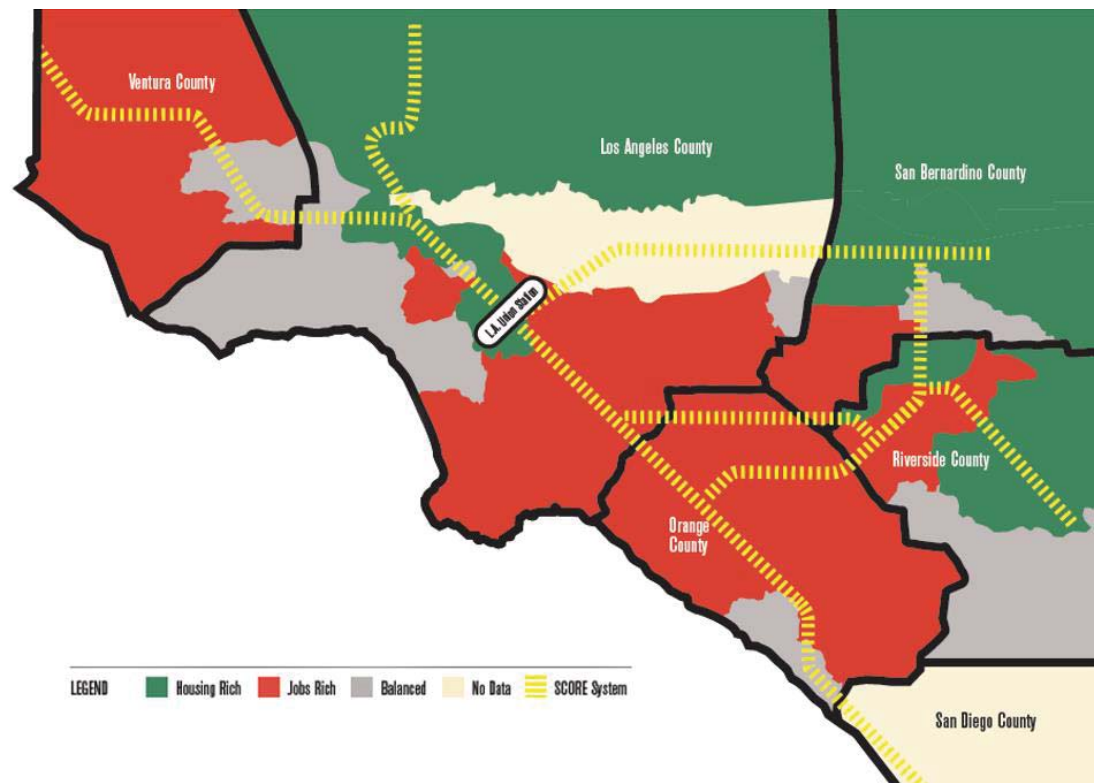
\* Projected 2025 Jobs/Housing Balance in the SCAG region from Study on Jobs/Housing Balance. April 2001



8

## Metrolink's importance in Riverside County

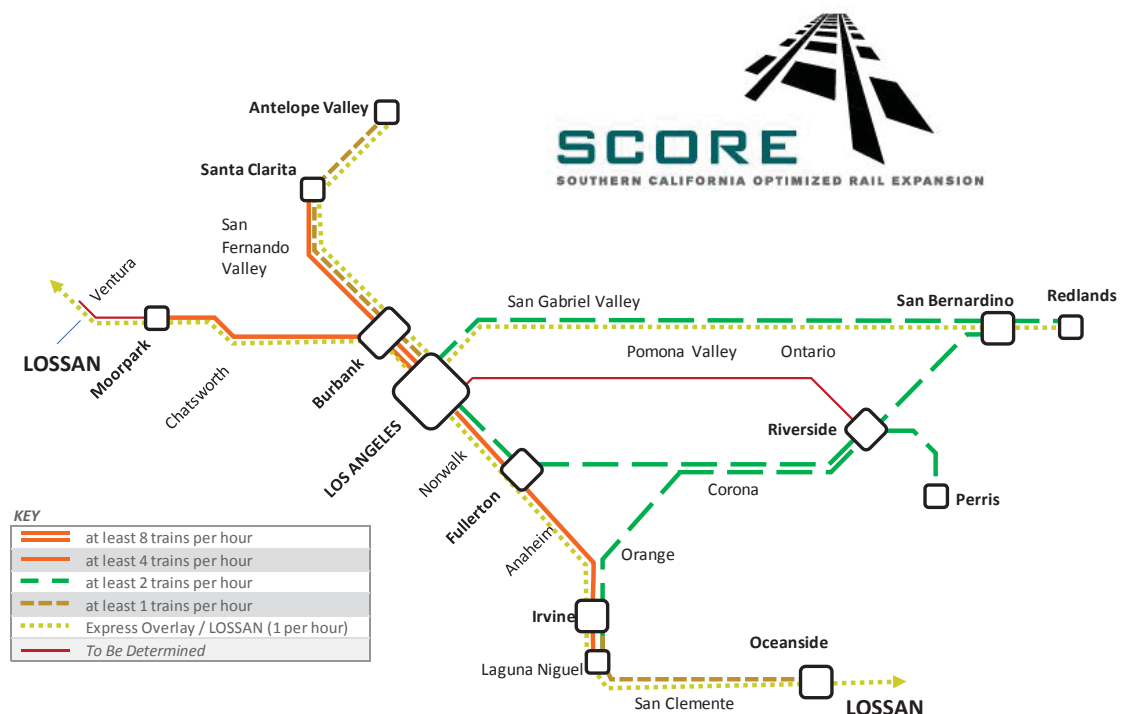
- Metrolink connects to jobs, housing & entertainment
- Provides relief for the 91 and other crowded freeways



9

## SCORE Program

- 10 year, \$10 billion plan to improve Metrolink
- More frequent, reliable train service across the region
- Supported by SB1 and TIRCP grants



10

## SCORE improves Metrolink system for the future

- Improves and adds tracks for more, reliable train service
- Options for dedicated freight tracks to protect trade corridor
- Upgrades crossings, enhancing safety and enabling more Quiet Zones

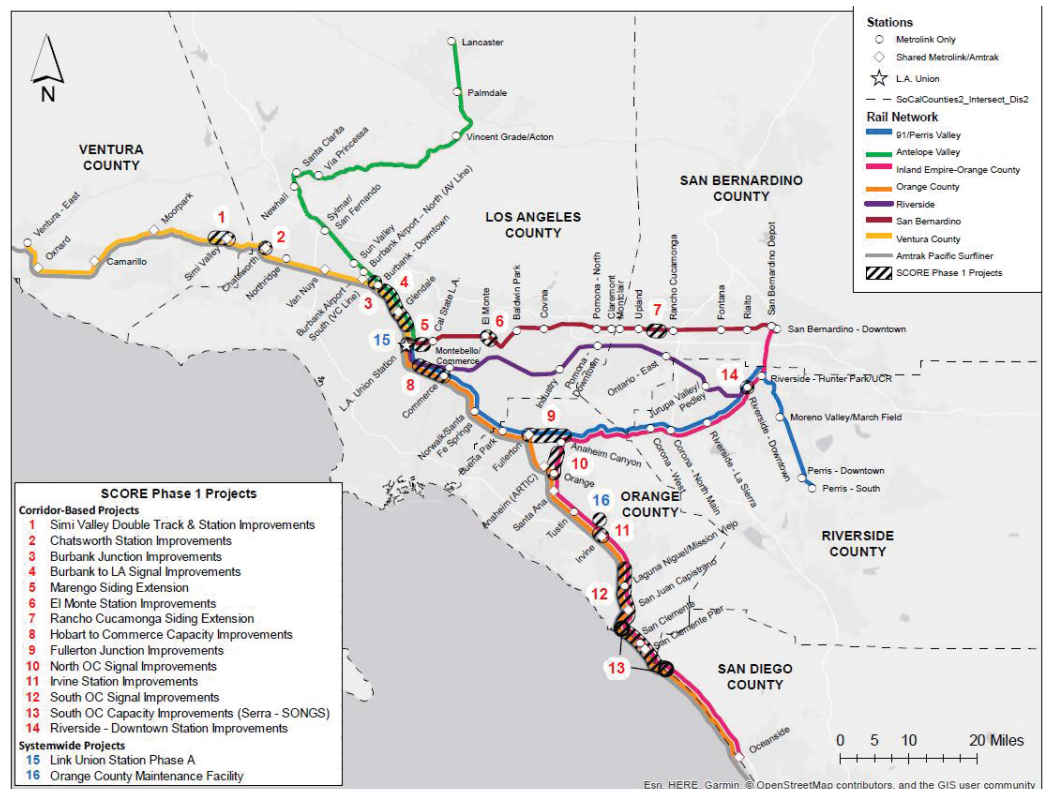


11

**\$1.5 Billion**  
secured

**\$875 Million**  
grant award from  
the California Transit  
and Intercity Rail  
Capital Program

**7 Projects**  
total in Riverside  
County

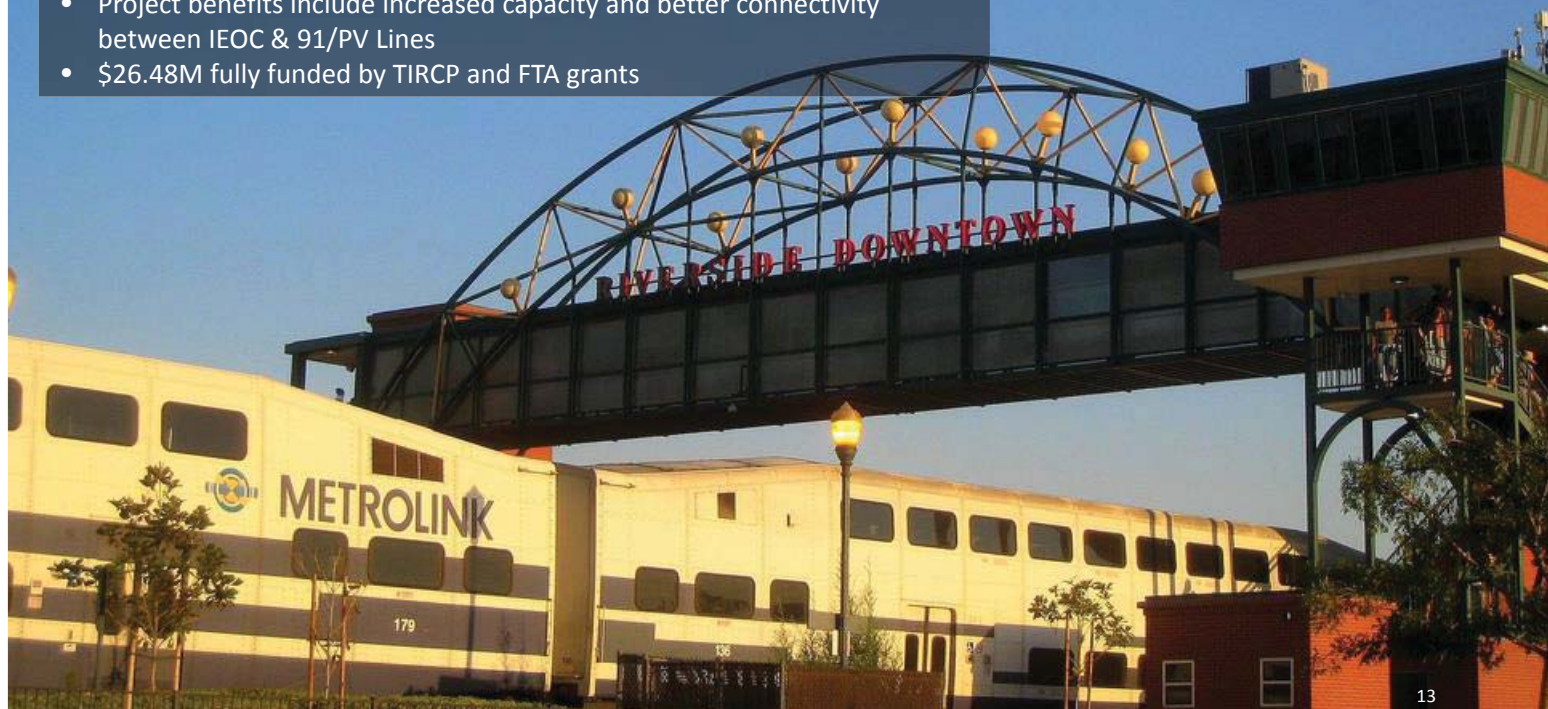


12



## Riverside – Downtown Station improvements

- Project will install additional center platform, a pair of tracks on the SE side, extension of pedestrian overpass and new elevator
- Project benefits include increased capacity and better connectivity between IEOC & 91/PV Lines
- \$26.48M fully funded by TIRCP and FTA grants



13



## Metrolink leads the nation with PTC

- Positive Train Control (PTC) is life-saving rail technology
- First passenger rail in the nation to operate PTC across entire network
- One of four in the nation to meet federal PTC deadline Dec. 31, 2018

14

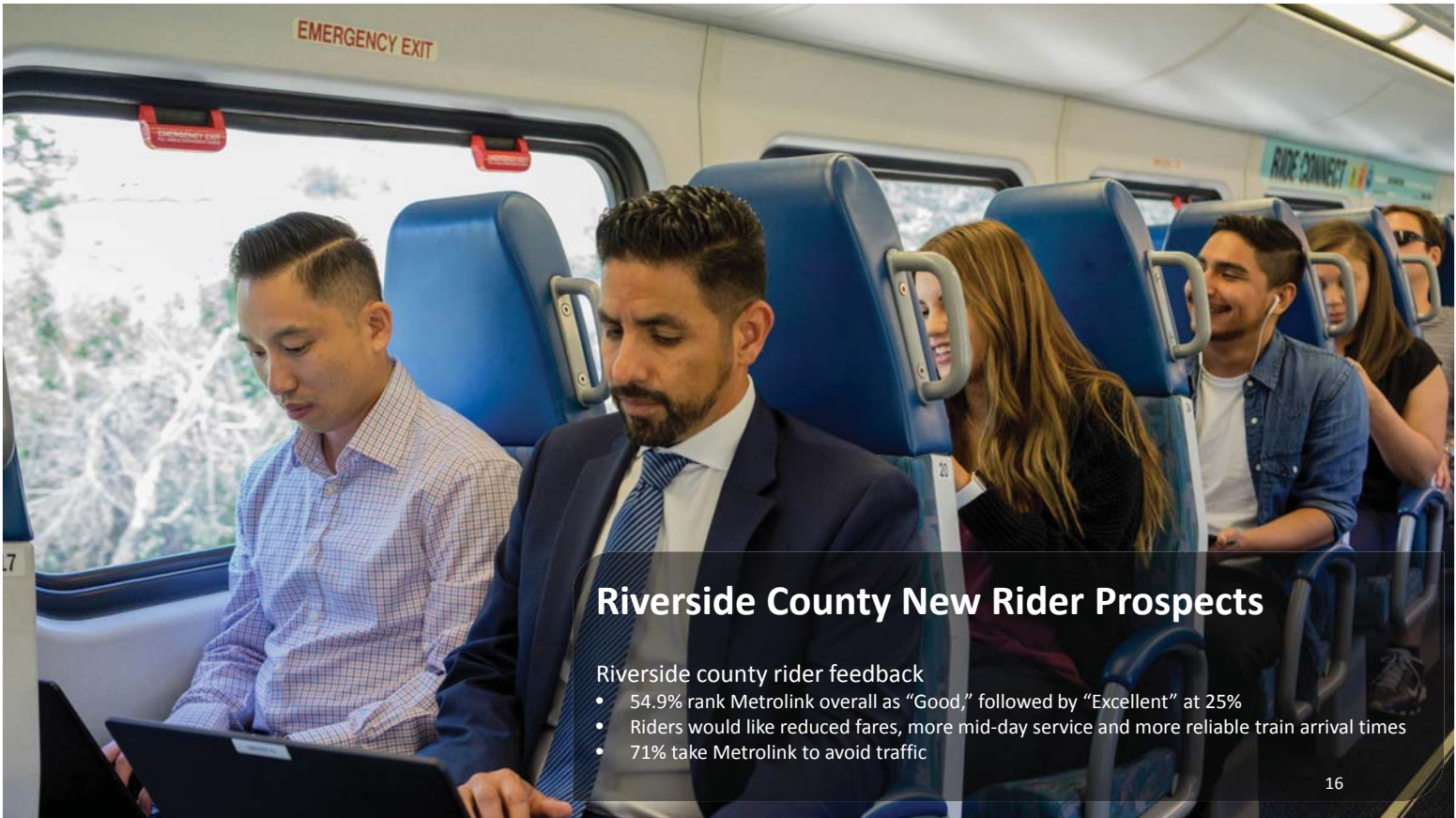




## Metrolink powered by clean tech

- Safer, cleaner and more power
- Up to 85% reduction in PM and NOx exhaust emissions
- 64% more horsepower compared to Tier 0
- Seven currently in revenue service

15



## Riverside County New Rider Prospects

### Riverside county rider feedback

- 54.9% rank Metrolink overall as "Good," followed by "Excellent" at 25%
- Riders would like reduced fares, more mid-day service and more reliable train arrival times
- 71% take Metrolink to avoid traffic

16



## Future Opportunities

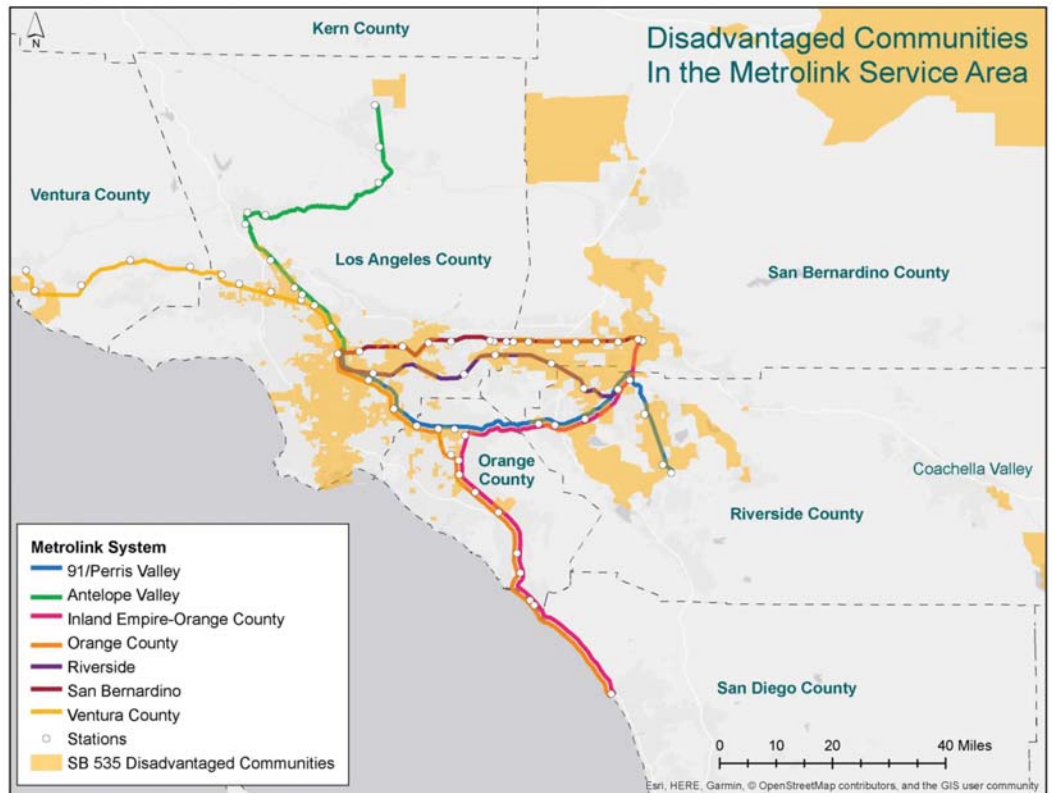
Improve partnership with Union Pacific and other freights

- Address Riverside Line reliability concerns

Leverage the affordable housing in Riverside county, along with job centers in LA County

Add train service to special events in Riverside County

- Train service to Coachella Music Festival



17

## Any Questions?



**METROLINK**

18