

RIVERSIDE PUBLIC UTILITIES

Board Memorandum

BOARD OF PUBLIC UTILITIES

DATE: May 13, 2019

GENERAL MANAGER'S REPORT

ITEM NO:

SUBJECT: MONTHLY WATER REPORT – March 2019

In March, RPU's total water production was 3,926 acre-feet (AF) as shown in Figures 1 and 2. RPU's annual rolling production totals by month are shown in Figure 3. In March, the peak water usage on the potable water distribution system was 47.6 million gallons per day (MGD) and occurred on March 28, 2019 as shown on Figure 4.

RPU's potable water supply, including deliveries to Western Municipal Water District (WMWD), totaled 3,592 AF, which decreased from last March by 513 AF. Under the Cooperative Agreement for Water Production and Conveyance with WMWD, 265 AF of potable water was delivered to WMWD as shown in Figures 1 and 2.

In March, RPU's Gallons Per-Capita Per Day (GPCD) was 107, and its Residential Gallons Per-Capita Per Day (R-GPCD) was 62 gallons. RPU's annual rolling GPCD was 180, which is below the compliance target specified in SB X7-7 (i.e. 20% reduction by 2020) of 213. RPU's annual rolling R-GPCD was 107 as shown on Figure 5.

Weather conditions within the City of Riverside showed that March of 2019 was warmer by 0.4 degrees from March last year and experienced 1.38 inches of rainfall compared to 1.65 inches from March 2018.

On Monday, March 4, there was a break on a 27-inch pipeline located along Magnolia Avenue between Tyler Street and Polk Street. This portion of techite pipe is scheduled to be replaced by May 2019. Staff estimated that approximately 8.4 AF (or 2.75 million gallons) were lost during the break.

Basin Groundwater Levels

Groundwater levels in the Bunker Hill, Rialto-Colton, and Riverside North basins are continuing to show a long-term declining trend, while groundwater levels in the Riverside South Basin remain relatively stable as shown in Figure 6. Water levels in the Bunker Hill and Riverside South basins are about the same level as they were in March of last year. Water levels in the Rialto-Colton Basin are 1 foot lower compared to March of last year, while water levels in the Riverside North Basin are 2.6 feet higher compared to March of last year.

FIGURE 1: RPU WATER - TOTAL PRODUCTION REPORT- FISCAL YEAR 2018 -2019

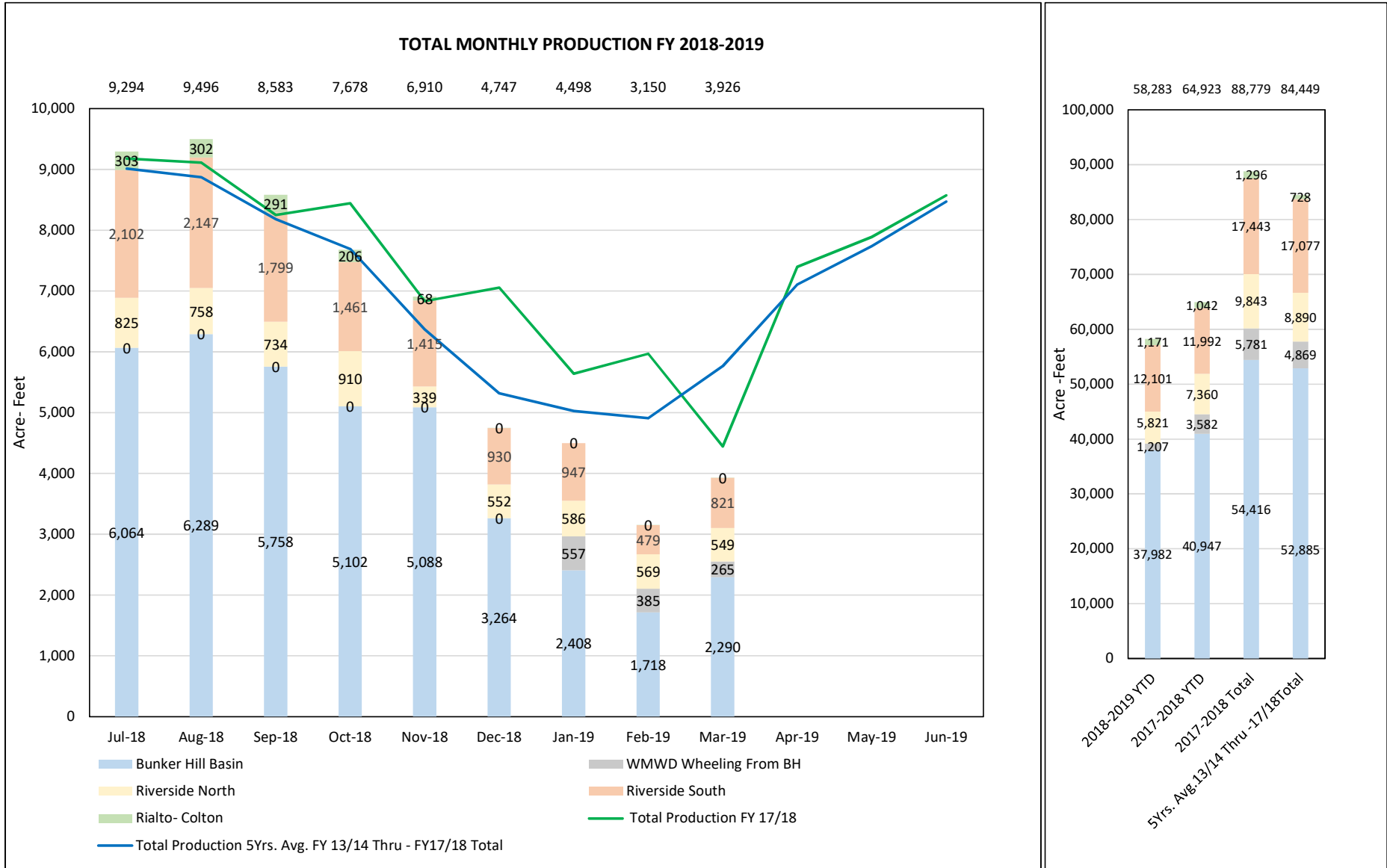


FIGURE 2: RPU WATER - TOTAL PRODUCTION REPORT - CALENDAR YEAR 2019

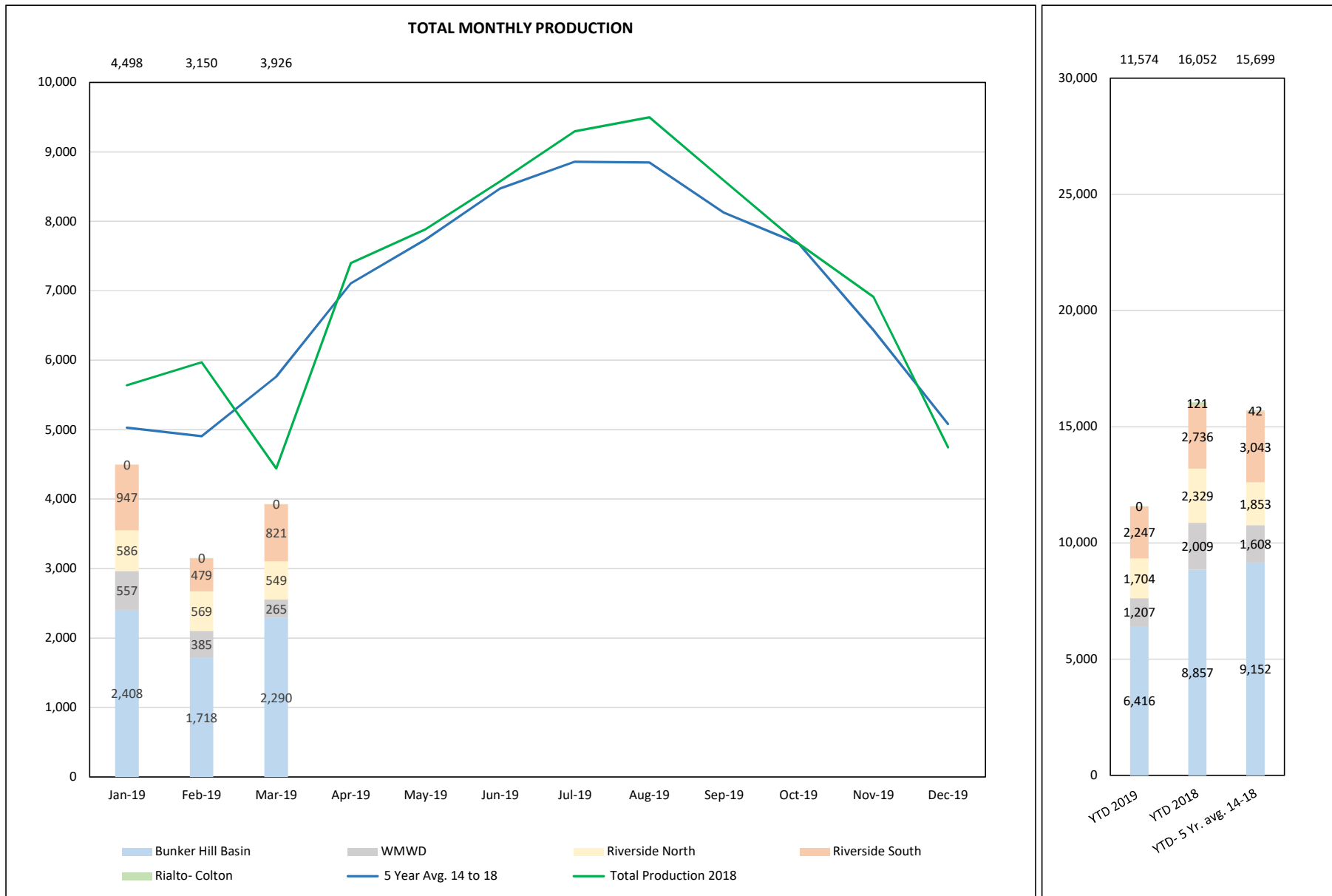


FIGURE 3: RPU WATER - TOTAL PRODUCTION REPORT

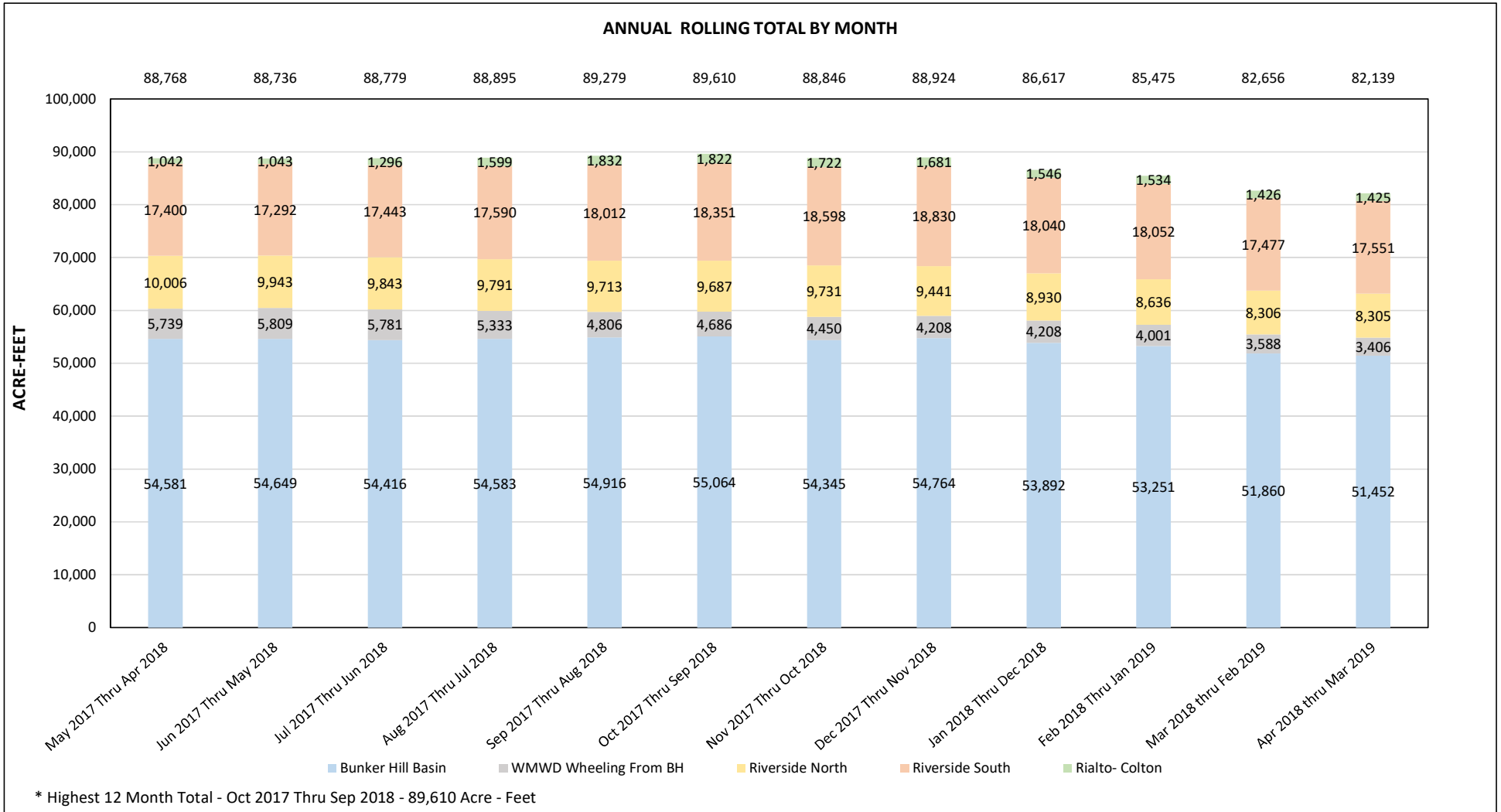


FIGURE 4: RPU WATER- TOTAL MONTHLY CONSUMPTION REPORT

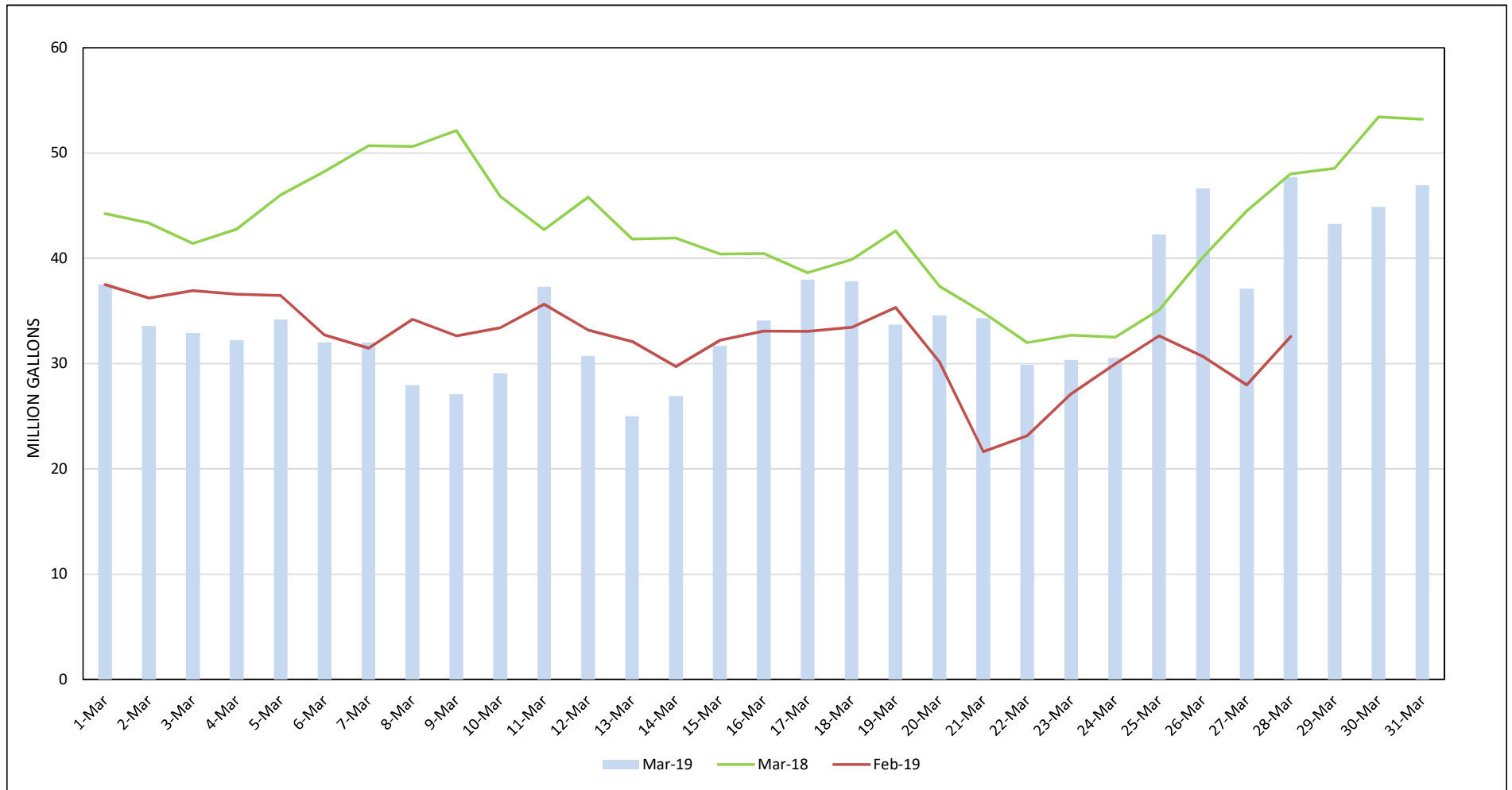


FIGURE 5: RPU WATER - TOTAL GPCD AND R- GPCD ANNUAL ROLLING

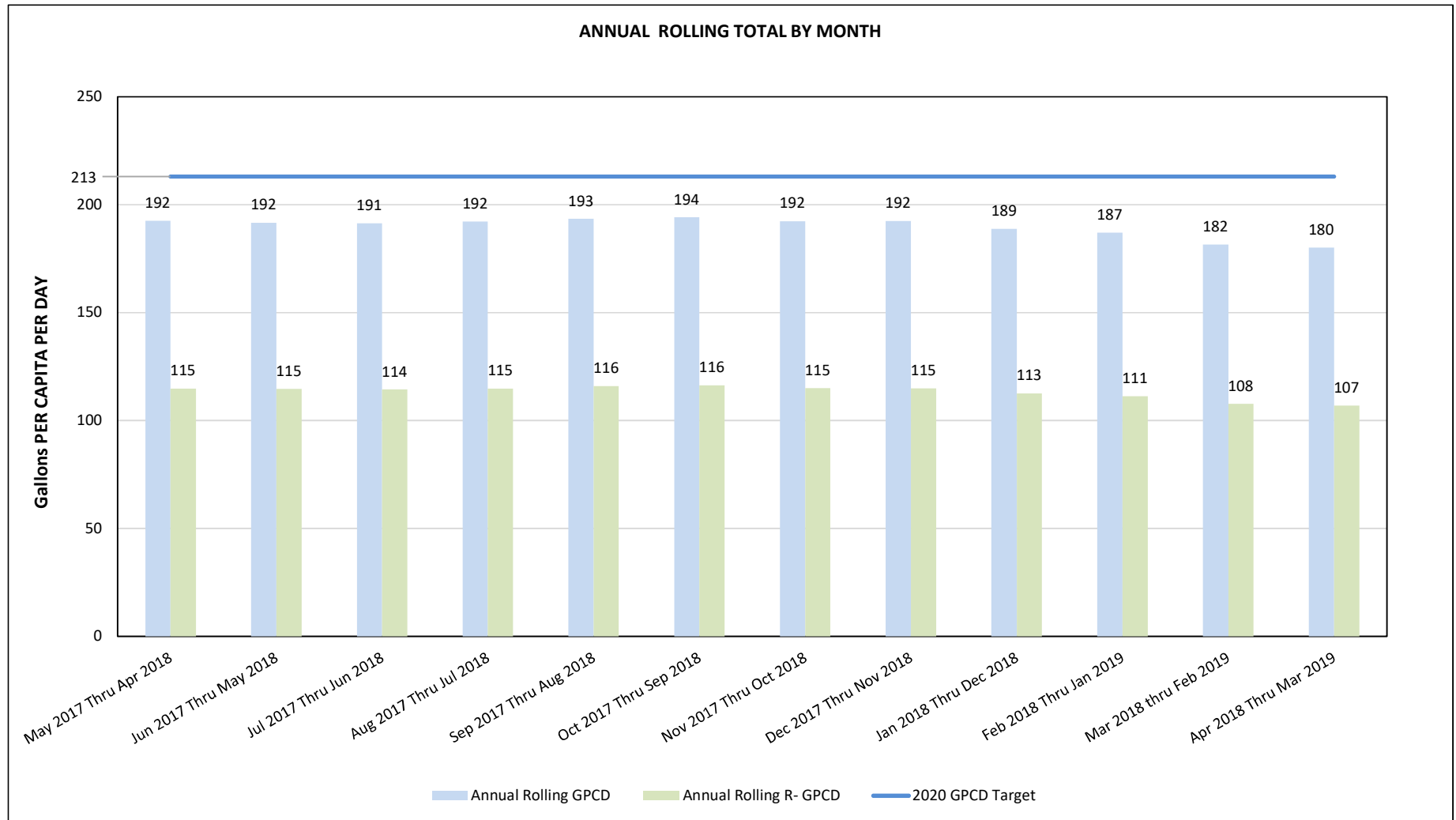
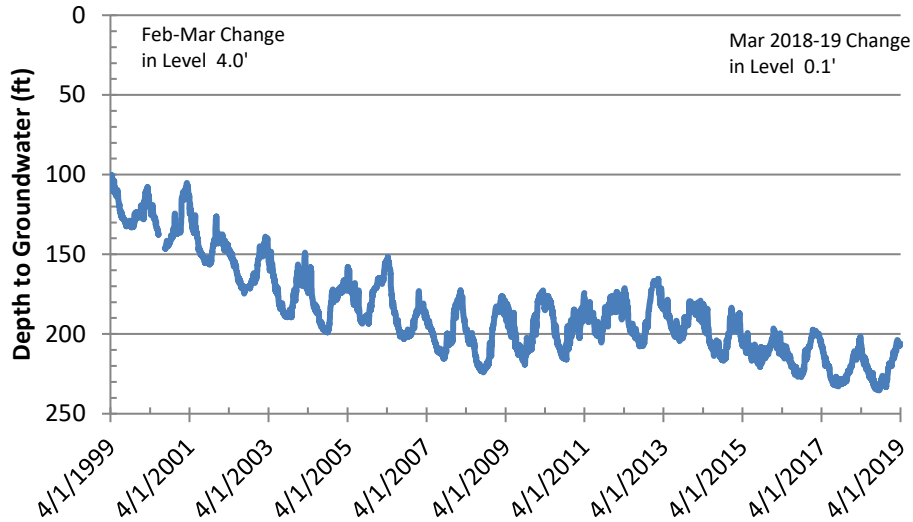
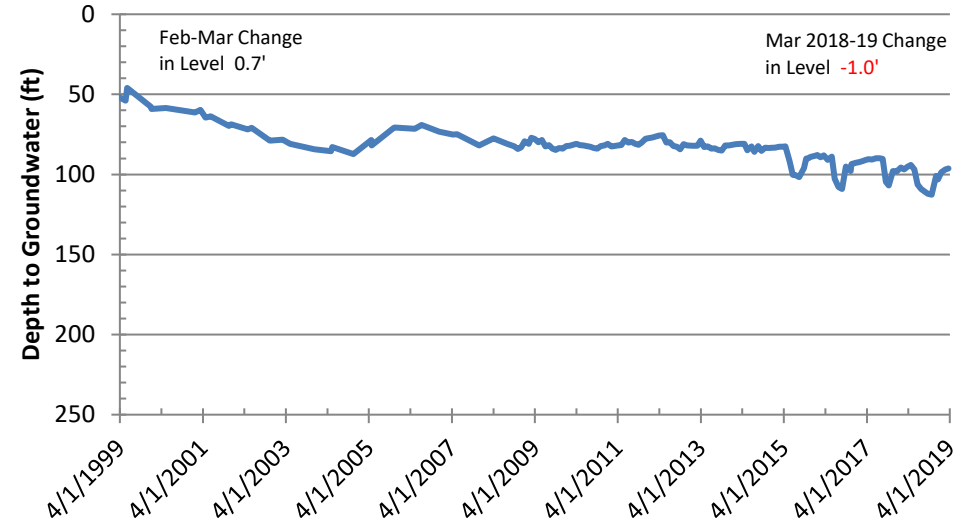


Figure 6: Basin Groundwater Levels

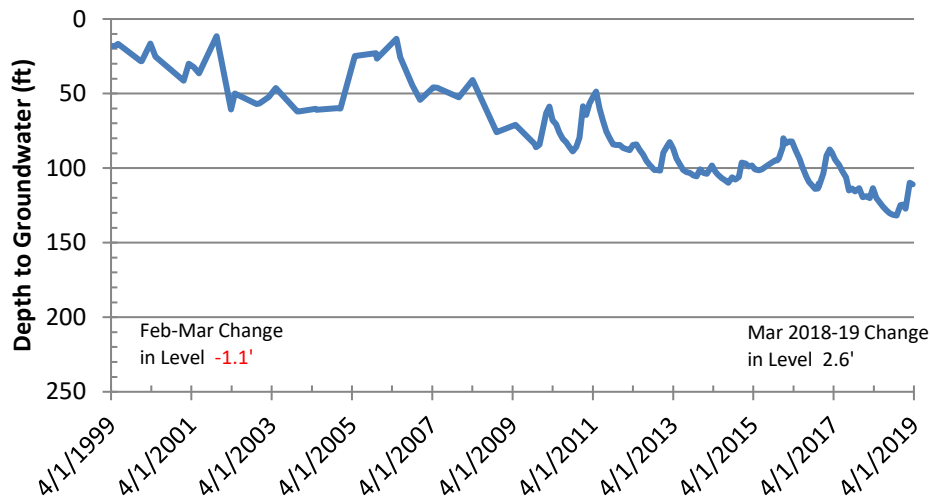
Bunker Hill Basin Sierra High School (USGS)



Rialto-Colton Basin Johnson 1



Riverside North Basin Flume 5



Riverside South Basin Cunningham

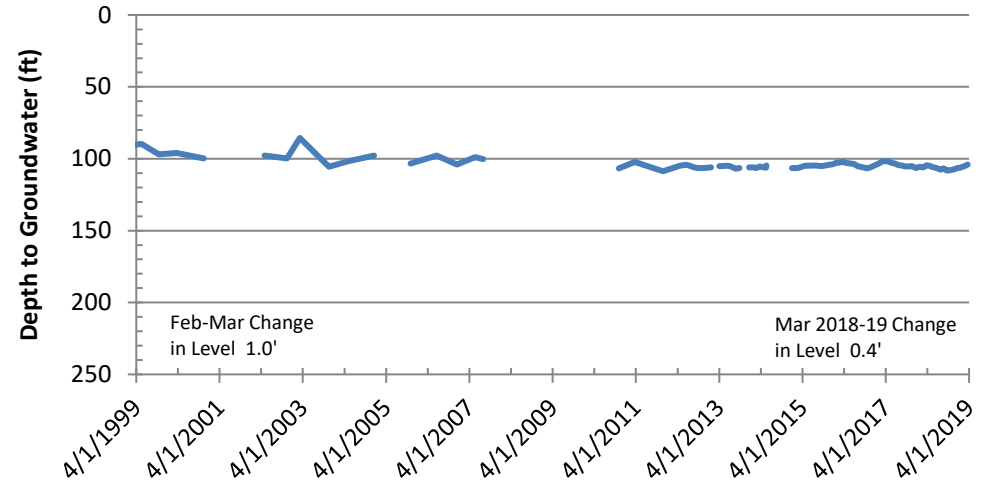


Figure 7: Groundwater Basin Vicinity Map

