

# RIVERSIDE PUBLIC UTILITIES

## Board Memorandum

**BOARD OF PUBLIC UTILITIES**

**DATE:** June 10, 2019

**GENERAL MANAGER'S REPORT**

**ITEM NO:**

**SUBJECT: MONTHLY WATER REPORT – APRIL 2019**

In April, RPU's total water production was 6,711 acre-feet (AF) as shown in Figures 1 and 2. RPU's annual rolling production totals by month are shown in Figure 3. In April, the peak water usage on the potable water distribution system was 68.8 million gallons per day (MGD) and occurred on April 25, 2019 as shown on Figure 4.

RPU's potable water supply, including deliveries to Western Municipal Water District (WMWD), totaled 5,486 AF, which decreased from last April by 578 AF. Under the Cooperative Agreement for Water Production and Conveyance with WMWD, 455 AF of potable water was wheeled to WMWD during April as shown in Figures 1 and 2. During this 2018/19 fiscal year, 1,662 AF of potable water has been wheeled to WMWD and 3,221 AF of surplus water has been delivered.

In April, RPU's Gallons Per-Capita per Day (GPCD) was 168, and its Residential Gallons Per-Capita per Day (R-GPCD) was 101. RPU's annual rolling GPCD was 179, which is below the compliance target specified in SB X7-7 (i.e. 20% reduction by 2020) of 213. RPU's annual rolling R-GPCD was 105 as shown on Figure 5.

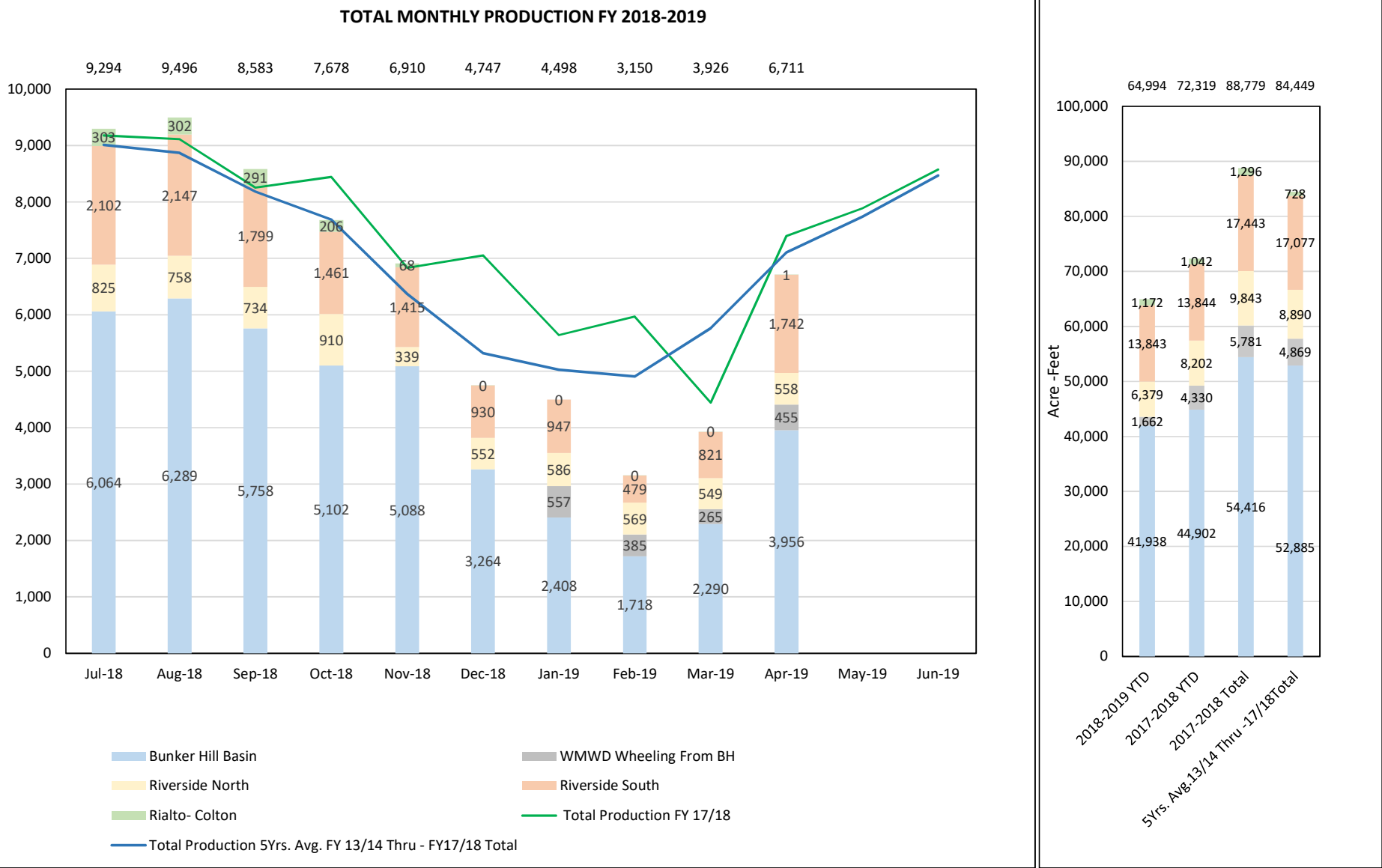
Weather conditions within the City of Riverside showed that April of 2019 was warmer by 0.2 degrees from April last year and experienced 0.07 inches of rainfall increase compared to last year.

There were no significant events for the water system in April 2019.

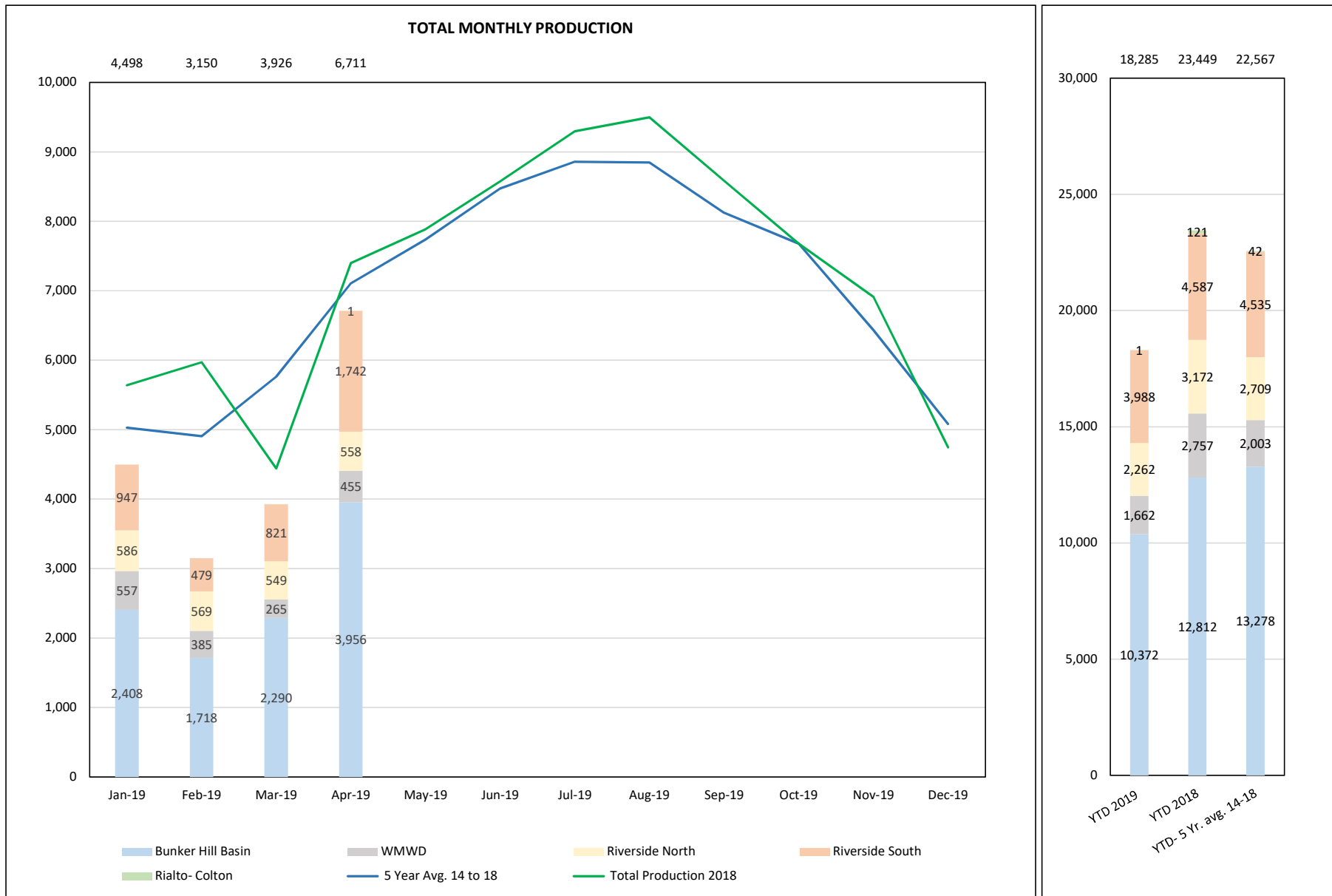
**Basin Groundwater Levels**

Groundwater levels in the Bunker Hill, Rialto-Colton, and Riverside North basins are continuing to show a long-term declining trend, while groundwater levels in the Riverside South Basin remain relatively stable as shown in Figure 6. Water levels in Bunker Hill are about the same as they were last year. Water levels in the basin have likely hit their spring peak and will begin declining into the summer and fall production period. Water levels in the Rialto-Colton Basin are about 2 feet lower compared to April of last year; while in the Riverside North Basin, water levels have increased by approximately 7 feet compared to April of last year. This increase is the result of recharge occurring within the Santa Ana River generated by winter storms. Water levels in the Riverside South Basin are 1 foot higher as compared to April of last year.

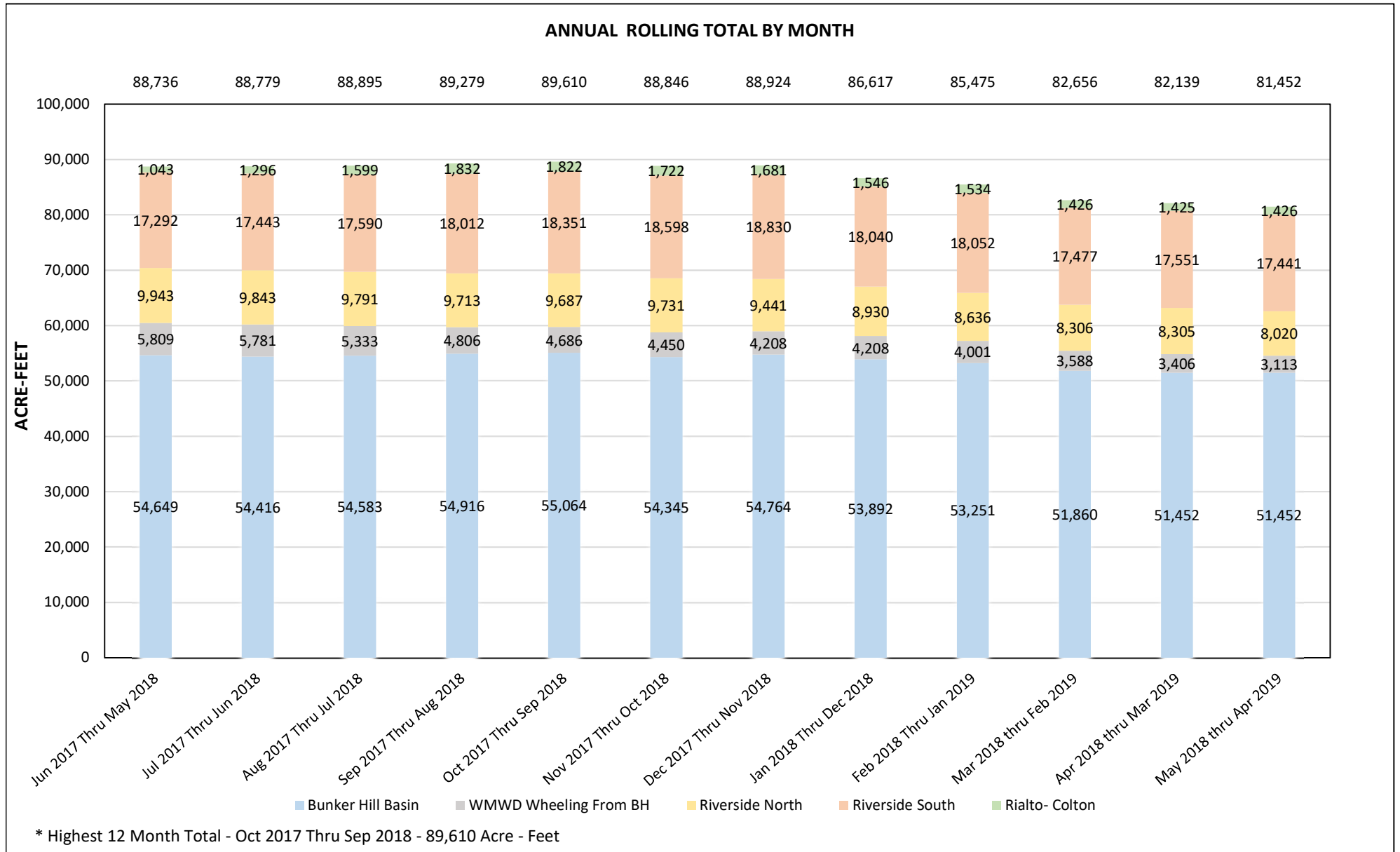
**FIGURE 1: RPU WATER - TOTAL PRODUCTION REPORT- FISCAL YEAR 2018 -2019**



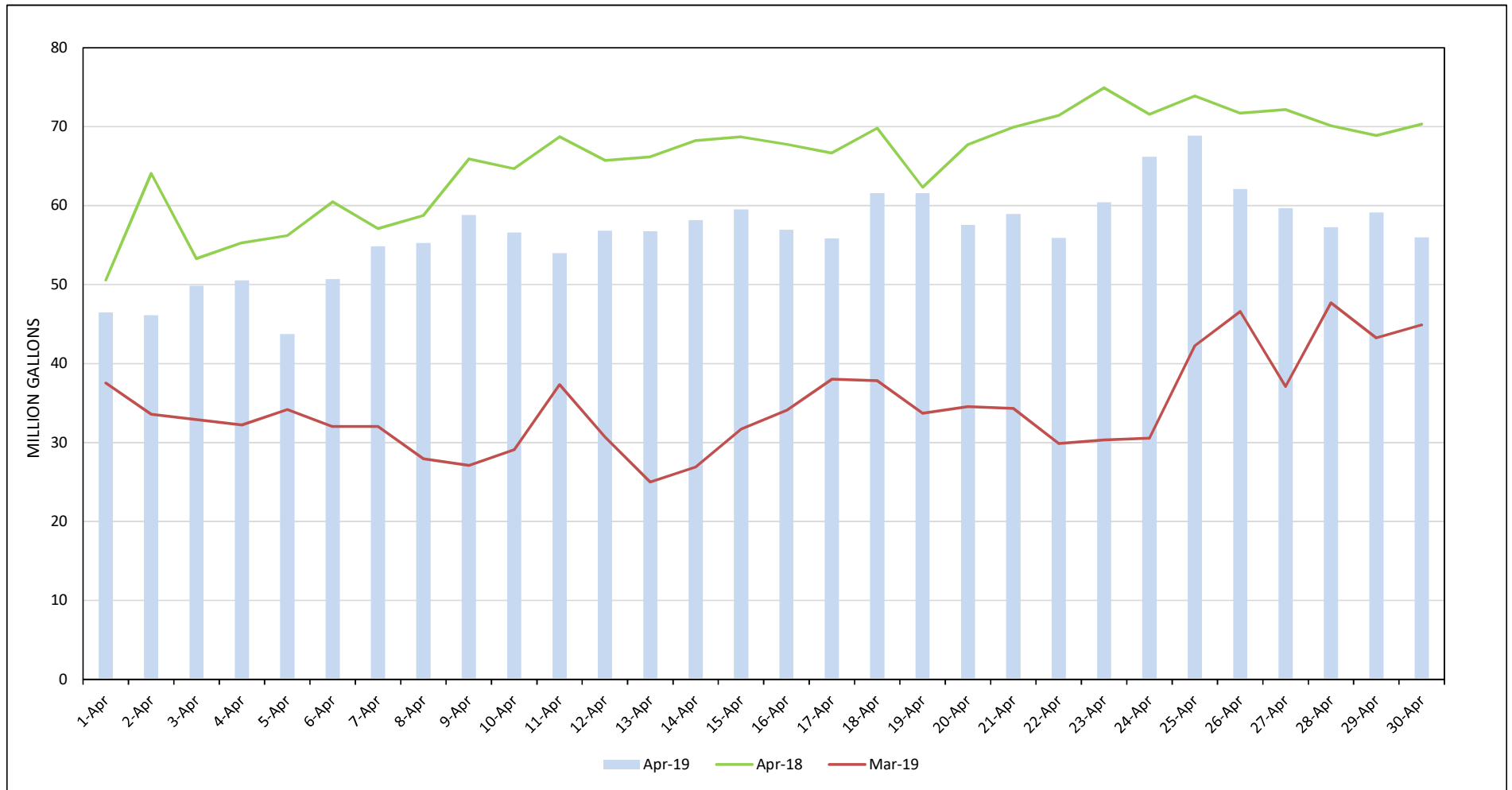
**FIGURE 2: RPU WATER - TOTAL PRODUCTION REPORT - CALENDAR YEAR 2019**



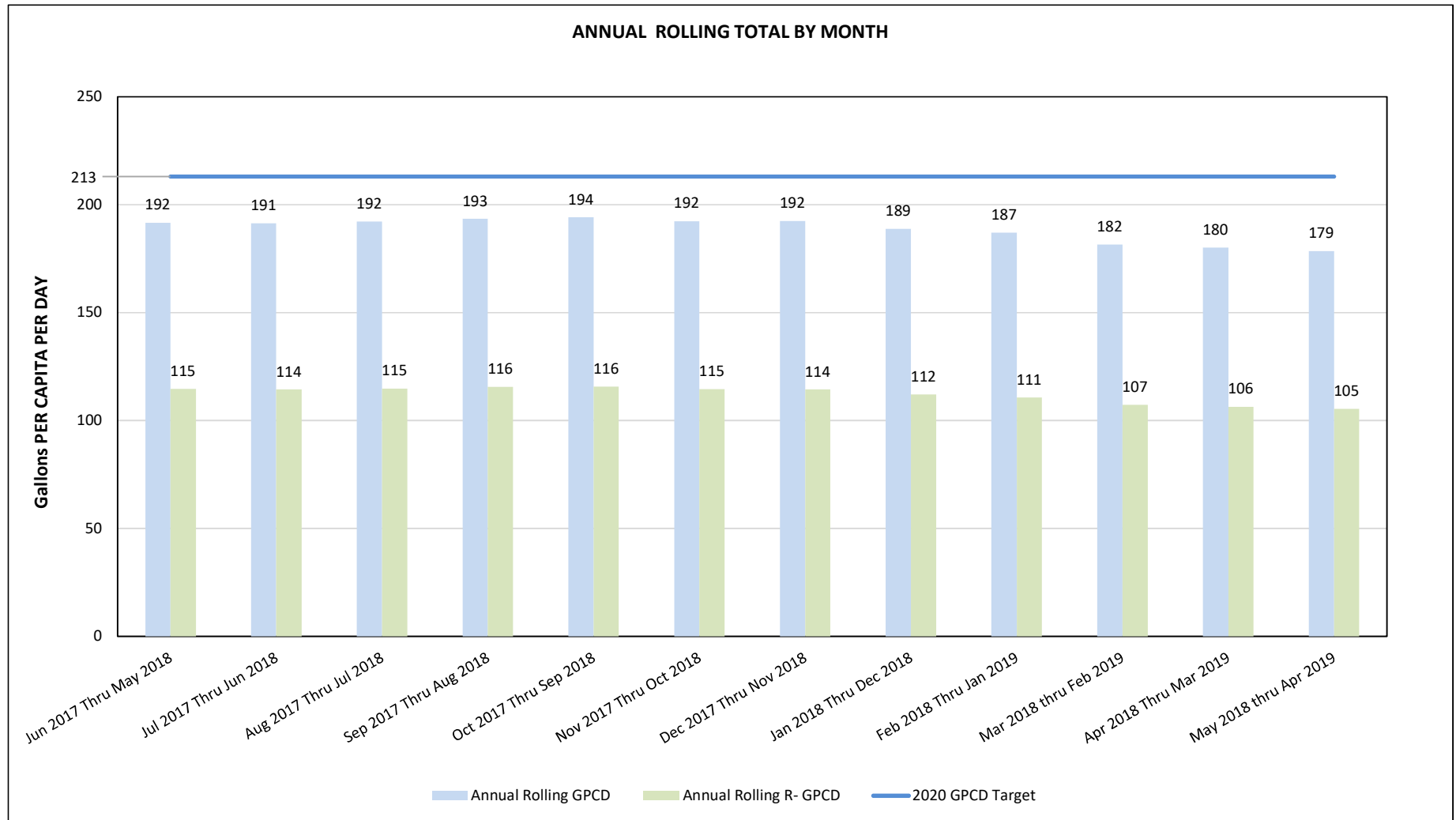
# FIGURE 3: RPU WATER - TOTAL PRODUCTION REPORT



# FIGURE 4: RPU WATER- TOTAL MONTHLY CONSUMPTION REPORT

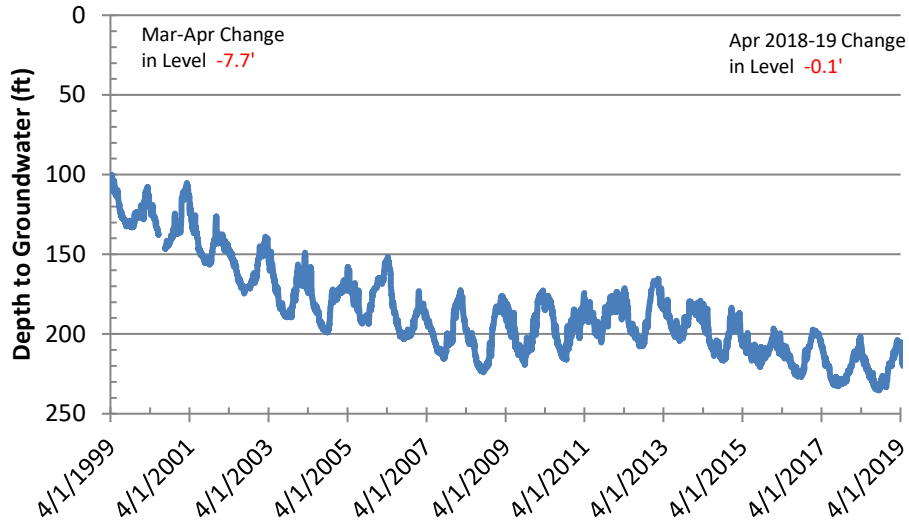


**FIGURE 5: RPU WATER - TOTAL GPCD AND R- GPCD ANNUAL ROLLING**

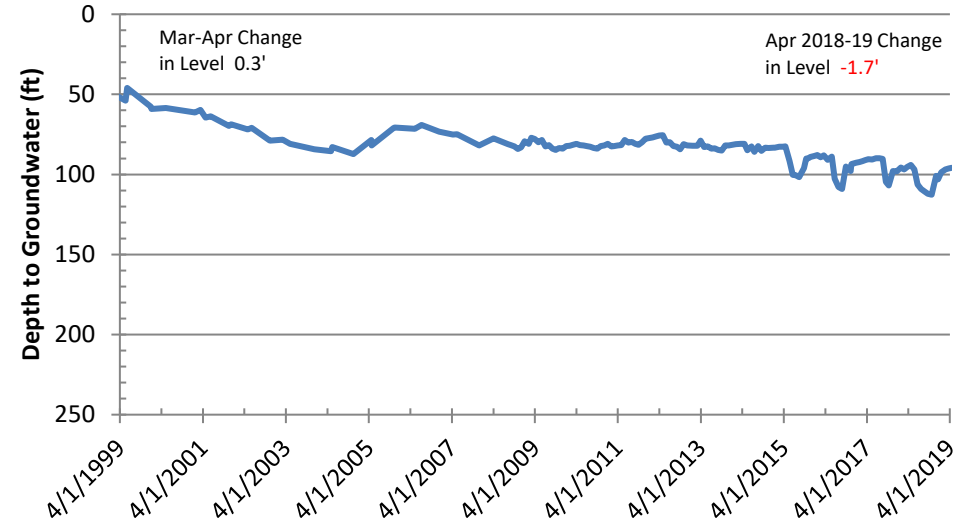


# Figure 6: Basin Groundwater Levels

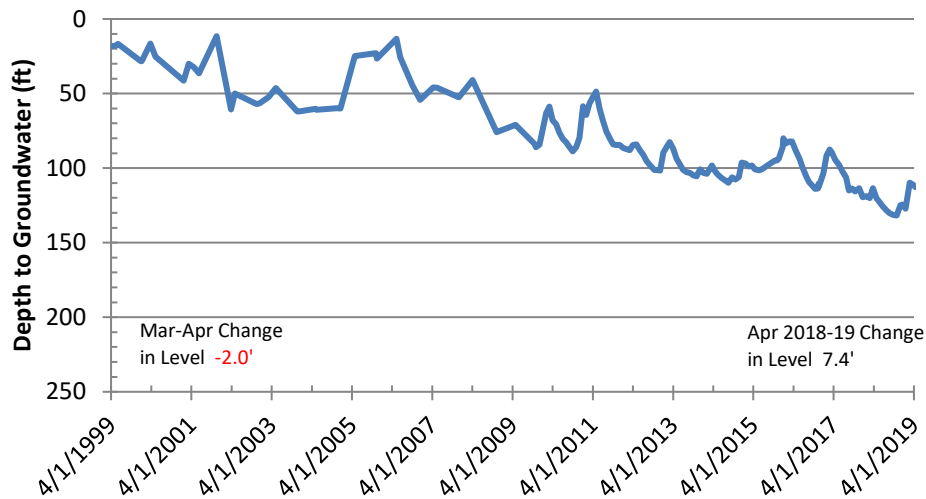
## Bunker Hill Basin Sierra High School (USGS)



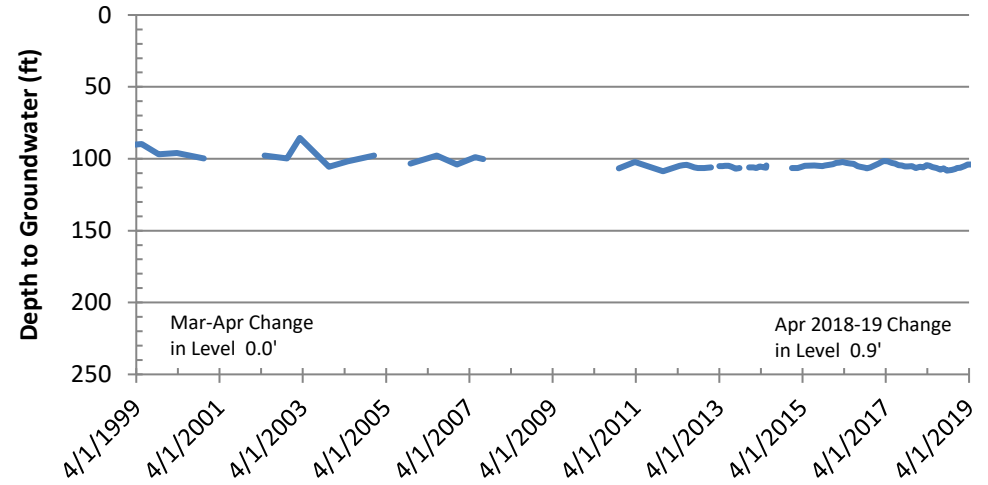
## Rialto-Colton Basin Johnson 1



## Riverside North Basin Flume 5



## Riverside South Basin Cunningham





# Figure 7: Groundwater Basin Vicinity Map

