

PRELIMINARY LANDSCAPE NOTES AND DETAILS

LANDSCAPE PLANTING NOTES AND MATERIALS

SCOPE OF WORK

FURNISH ALL MATERIALS, LABOR, EQUIPMENT AND RELATED ITEMS NECESSARY TO ACCOMPLISH THE TREATMENT AND PREPARATION OF SOIL, FINISH GRADING, PLACEMENT OF SPECIFIED PLANT MATERIALS, FERTILIZER, STAKING, MULCH, CLEAN-UP, DEBRIS REMOVAL, AND 90-DAY MAINTENANCE.

QUALIFICATIONS:

LANDSCAPE CONTRACTOR TO BE SKILLED AND KNOWLEDGEABLE IN THE FIELD OF WORK. CONTRACTOR TO BE LICENSED TO PERFORM THE WORK SPECIFIED WITHIN THE PRESDING JURISDICTION.

JOB CONDITIONS:

IT IS THE CONTRACTOR'S RESPONSIBILITY TO REVIEW THE SITE AND REPORT ANY DISCREPANCIES TO THE OWNER OR THE OWNER'S REPRESENTATIVES. ALL PLANT MATERIAL AND FINISH GRADES ARE SUBJECT TO APPROVAL BY THE OWNER.

PROTECTION:

DO NOT PLANT UNTIL OTHER CONSTRUCTION OPERATIONS WHICH CONFLICT HAVE BEEN COMPLETED. AN IRRIGATION SYSTEM IS TO BE INSTALLED. DO NOT PLANT UNTIL THE SYSTEM HAS BEEN TESTED AND APPROVED. HANDLE PLANTS WITH CARE. DO NOT DAMAGE OR BREAK ROOT SYSTEM, BARK, OR BRANCHES. REPAIR AND/OR REPLACE ITEMS DAMAGED AS A RESULT OF WORK, OR WORK NOT IN COMPLIANCE WITH PLANS AND SPECIFICATIONS, AS DIRECTED BY OWNER AT NO ADDITIONAL COST.

GUARANTEES:

GUARANTEE ALL PLANT MATERIAL FOR A PERIOD OF ONE YEAR FROM DATE OF FINAL ACCEPTANCE OF THE JOB BY OWNER.

90-DAY MAINTENANCE:

CONTRACTOR TO PROVIDE OWNER WITH A SCOPE OF WORK AT TIME OF INITIAL PROJECT BID TO PROVIDE LANDSCAPE AND IRRIGATION MAINTENANCE FOR 90 DAYS FOLLOWING COMPLETION OF PROJECT (ACCEPTANCE) OF FACILITY BY OWNER. WORK TO INCLUDE MAINTENANCE AS DESCRIBED BELOW, IN PLANTING AND IRRIGATION MAINTENANCE.

MATERIALS:

PLANT MATERIALS:

PLANT MATERIALS TO BE GRADE NO. 1, SIZED IN ACCORDANCE WITH (AAM) AMERICAN STANDARDS FOR NURSERY STOCK (ANSI Z60.1-1986). PRUNE PLANTS RECEIVED FROM THE NURSERY ONLY UPON AUTHORIZATION BY LANDSCAPE ARCHITECT. "7" & 8" INDICATES BALLED AND BULBAPPED, "CONT." INDICATES CONTAINER; "BT" INDICATES BARE ROOT; "CAL" INDICATES CALIPER AT 6" ABOVE SOIL LINE; "GAL" INDICATES GALLON.

A) SPECIFIED PLANT CANOPY SIZE OR CALIPER IS THE MINIMUM ACCEPTABLE CONTAINER OR BALL SIZE ESTABLISHES MINIMUM PLANT CONDITION TO BE PROVIDED.

B) QUALITY:

PLANT MATERIAL TO COMPLY WITH STATE AND FEDERAL LAWS FOR DISEASE INSPECTION. PLANTS TO BE FULLY LIVE, VIGOROUS, WELL FORMED, WITH WELL DEVELOPED FIBROUS ROOT SYSTEMS. ROOT BALLS OF PLANTS TO BE SOLID AND FIRMLY HELD TOGETHER, SECURELY CONTAINED AND PROTECTED FROM INJURY AND DESICATION.

PLANTS DETERMINED BY LANDSCAPE ARCHITECT TO HAVE BEEN DAMAGED; HAVE DEFORMITIES OF STELL, BRANCHES, OR ROOTS; LACK SYMMETRY, HAVE MULTIPLE LEADERS OR "Y" CRITCHES LESS THAN 30 DEGREES IN TREES, OR DO NOT MEET SIZE OR ANSI STANDARDS WILL BE REJECTED. PLANT MATERIAL TO BE FROM A SINGLE NURSERY SOURCE FOR EACH SPECIFIED SPECIES/VARIETY. NURSERY SOURCES TO BE THOSE LOCATED IN THE SAME REGION AS THE JOB SITE.

C) SUBSTITUTION:

NO SUBSTITUTION OF PLANT MATERIAL, SPECIES OR VARIETY, WILL BE PERMITTED UNLESS WRITTEN EVIDENCE IS SUBMITTED TO THE OWNER FROM TWO QUALIFIED PLANT BROKERAGE OFFICES. SUBSTITUTIONS WHICH ARE PERMITTED TO BE IN WRITING FROM THE OWNER AND LANDSCAPE ARCHITECT, THE SPECIFIED SIZE, SPECIES AND NEAREST VARIETY, AS APPROVED, TO BE FURNISHED.

SOIL PREPARATION:

FOLOW RECOMMENDATIONS SPECIFIED IN SOIL REPORT INCLUDED IN THIS DRAWING SET.

A) SOIL PREPARATION

REMOVE FROM SITE ALL WEEDS AND DEBRIS WITHIN THE PROPOSED LANDSCAPE AREAS. VERIFY SUB-GRADES AT -5 INCHES BELOW FINISH ELEVATION IN ALL SHRUB AND GROUNDCOVER AREAS. DO NOT WORK SOIL WHEN MOISTURE CONTENT IS SO GREAT THAT EXCESS COMPACTION WILL OCCUR NOR WHEN IT IS SO DRY THAT DUST WILL FORM IN THE AIR OR THAT CLODS WILL NOT BREAK EASILY. APPLY WATER IF NECESSARY TO PROVIDE IDEAL MOISTURE CONTENT FOR FILLING AND FOR PLANTING AS SPECIFIED. THOROUGHLY SCARIFY AND REPAIR ALL LANDSCAPE GRADES WHICH HAVE BECOME COMPACTED TO A DEPTH OF 12 INCHES WITH MULTIPLE PASSES, 90 DEGREES TO EACH OTHER. SCARIFY AREAS INACCESSIBLE TO MECHANIZED EQUIPMENT WITH HAND TOOLS.

REMOVE ALL SURFACE LUMPS, ROCKS, VEGETATION AND/OR DEBRIS LARGER THAN 1-INCH FROM ALL GRADES PRIOR TO ANY SOIL PREPARATION. THOROUGHLY ROTOTILL ALL LANDSCAPE AREAS TO A DEPTH OF 6 INCHES. PLACE ADDITIONAL ANCHORED SOIL AS REQUIRED TO MEET FINISH ELEVATIONS. APPLY SOIL PREPARATION MATERIALS TO ALL PLANTING AREAS AND THOROUGHLY INCORPORATE INTO INTO THE TOP 6 INCHES OF SOIL.

WET SOIL THOROUGHLY AND ALLOW TO SETTLE. REPEAT THIS COMPACTING PROCEDURE UNTIL SOIL IS STABLE ENOUGH TO PERMIT AERATION AND DRAINAGE FOR PLANT MATERIAL. FINISH GRADE ALL PLANTING AREAS TO A SMOOTH, UNIFORM SURFACE DRAINING AWAY FROM BUILDINGS AND READY FOR PLANTING. FINISH GRADE TO BE 3 INCHES BELOW FINISH SURFACE OF ADJACENT PAVING IN SHRUB AND GROUNDCOVER AREAS. FINISH GRADES TO BE APPROVED PRIOR TO PLACEMENT OF ANY PLANT MATERIAL. PARKING PLANTER ISLANDS SHALL BE OVER EXCAVATED. REMOVE ALL PAVING WASTE, GRAVEL BASE AND UNDERLYING SUBSOIL TO 18 INCHES BELOW TOP OF THE PAVING. SCARIFY AND OVER EXCAVATE PIT BOTTOM 12 INCHES TO MINIMIZE STRUCTURAL COMPACTION.

MULCH: ONE-QUARTER-INCH (1/4") TO ONE HALF-INCH (1/2") SIZE FINE TEXTURED NITROLOGIZED BARK MULCH. SHREDDED WOOD WILL NOT BE ALLOWED.

STAKES:

2-INCH DIAMETER, BY 10-FOOT MINIMUM TREATED LODGEPOLE PINE TREE STAKE.

GUY MATERIAL:

CHAIN LOCK TREE TIES BY PRO-LOCK, OR APPROVED EQUAL. NO WIRE WILL BE ALLOWED.

HERBICIDE:

HERBICIDE IS NOT RECOMMENDED FOR THE FIRST YEAR AFTER INSTALLATION.

ANTI-DESICANT:

"WILT-PROOF," 48 HOURS PRIOR TO SHIPMENT TO SITE FROM JUNE 1 THROUGH SEPTEMBER. THOROUGHLY ROOT WATER PLANTS PRIOR TO DELIVERY. PLANT MATERIAL DELIVERED TO SITE TO BE KEPT CONTINUALLY MOIST THROUGH INSTALLATION.

EXECUTION:

FINISH GRADES:

FINE GRADE AND REMOVE ROCKS AND FOREIGN OBJECTS OVER TWO INCHES (2") DIAMETER FROM TOP THREE INCHES (3") OF PREPARED PLANTING BED. ALL FINISH GRADES TO BE SMOOTH EVEN GRADES, LIGHTLY COMPACTED, AS SHOWN ON THE PLAN AND DETAILED. SITE CIVIL DRAWINGS IDENTIFY FINAL ELEVATIONS.

TREES:

ARRANGE TREES ON SITE IN PROPOSED LOCATIONS PER DRAWINGS. EXCAVATE PIT, PLANT AND STAKE OR GUY, AS CALLED OUT AND DETAILED. ALL TREES AND SUPPORTS TO STAND VERTICAL. TREES TO BE PLACED AS SHOWN ON THE PLANTING PLAN, LOCATED AS DETAILED AND AS CALLED OUT ON PLANT LIST. BACKFILL SHALL BE PIT SOILS. SETTLE BACKFILL USING WATER ONLY. NO MECHANICAL COMPACTION.

SHRUBS:

INSTALL SHRUBS AS SPECIFIED FOR TREES.

GROUNDCOVERS:

EXCAVATE PITS TO A MINIMUM OF THREE INCHES (3") BELOW, AND TWICE THE ROOT BALL DIAMETER. WATER THOROUGHLY AND TAKE CARE TO ENSURE THAT ROOT CROWN IS AT PROPER GRADE, AS DETAILED.

MULCH FOR LANDSCAPE AREAS:

MULCH ALL LANDSCAPE AREAS WITH A THREE INCH (3") LAYER OF MULCH EXCEPT WHERE ROCK MULCH IS PROPOSED.

NON-VEGETATIVE MULCH:

1"-2" DIAMETER WASHED COBBLE MULCH, EARTH-TONE COLORS.

UTILITY CLEARANCES:

FIELD ADJUST PLANT LOCATIONS FOR 8-FOOT SEPARATION OF TREES/SHRUBS AND 2-FOOT SEPARATION FOR GROUNDCOVER FROM FIRE HYDRANTS AND UTILITY VAULTS.

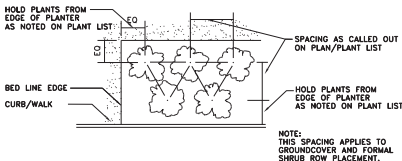
PLANTING MAINTENANCE:

CONTRACTOR TO MAINTAIN PLANTINGS THROUGH COMPLETED INSTALLATION, AND UNTIL ACCEPTANCE OF LANDSCAPE INSTALLATION. PLANTING MAINTENANCE TO INCLUDE WATERING, WEEDING, CULTIVATING, TIGHTENING AND REPAIRING OF GUYS, RESETTILING PLANTS TO PROPER GRADES OR POSITION, AND RE-ESTABLISHING SETTING GRADES. HERBICIDE IS NOT RECOMMENDED FOR ONE YEAR FOLLOWING LANDSCAPE INSTALLATION. INCLUDED IS REPLACEMENT OF DEAD PLANTS AND PLANTS SHOWING LOSS OF 40 PERCENT OR MORE OF CANOPY.

FERTILIZATION FOR GROUNDCOVER AREAS: UNIFORMLY BROADCAST SULFUR COATED UREA AT THE RATE OF FIVE (5) LBS. PER 1,000 SQUARE FEET. THE FIRST APPLICATION TO OCCUR APPROXIMATELY FORTY-FIVE (45) DAYS AFTER PLANTING. IN EARLY FALL AND SPRING, SUBSTITUTE A COMPLETE FERTILIZER SUCH AS 18-6-8 OR EQUAL FOR THE SULFUR COATED UREA AT THE RATE OF SIX (6) LBS. PER 1,000 SQUARE FEET. FOLLOW EACH FERTILIZATION WITH A THOROUGH IRRIGATION APPLICATION.

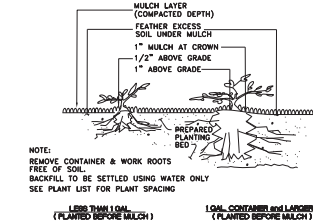
IRRIGATION MAINTENANCE:

THE IRRIGATION SYSTEM TO BE MAINTAINED INCLUDING ADJUSTMENTS FOR BALANCED WATER DISTRIBUTION & PRECIPITATION. FAILED OR MALFUNCTIONING IRRIGATION EQUIPMENT SHALL BE REPLACED OR CORRECTED. PLANT AND IRRIGATION MAINTENANCE TO INCLUDE THOSE OPERATIONS NECESSARY TO THE PROPER GROWTH AND SURVIVAL OF ALL PLANT MATERIALS. CONTRACTOR TO PROVIDE THIS WORK IN ADDITION TO SPECIFIC WARRANTY/GUARANTEES.



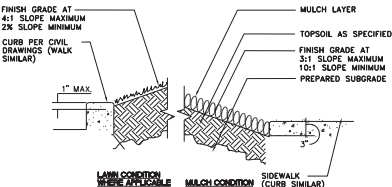
PLANT MATERIAL SPACING DETAIL

NOT TO SCALE



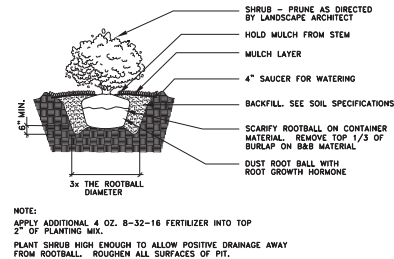
GROUNDCOVER PLANTING DETAIL

NOT TO SCALE



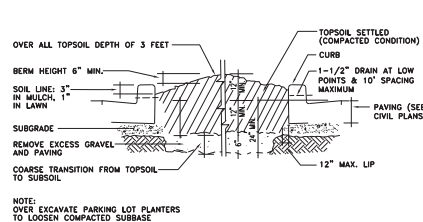
PLANTER SECTION DETAIL

NOT TO SCALE



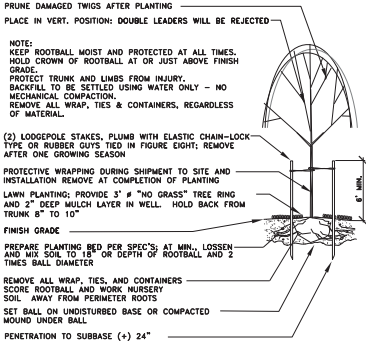
SHRUB PLANTING DETAIL

NOT TO SCALE



GRADING & PARKING LOT PLANTERS DETAIL

NOT TO SCALE



DECIDUOUS TREE PLANTING/STAKING DETAIL

NOT TO SCALE

LANDSCAPE NOTES AND DETAILS
KA ENTERPRISES MEGA MART
Sycamore Canyon Blvd and Central Ave
Riverside, CA

5620 Oberlin Dr. Suite 201
San Diego, CA 92121
858/404-6080
fax 858/404-6081



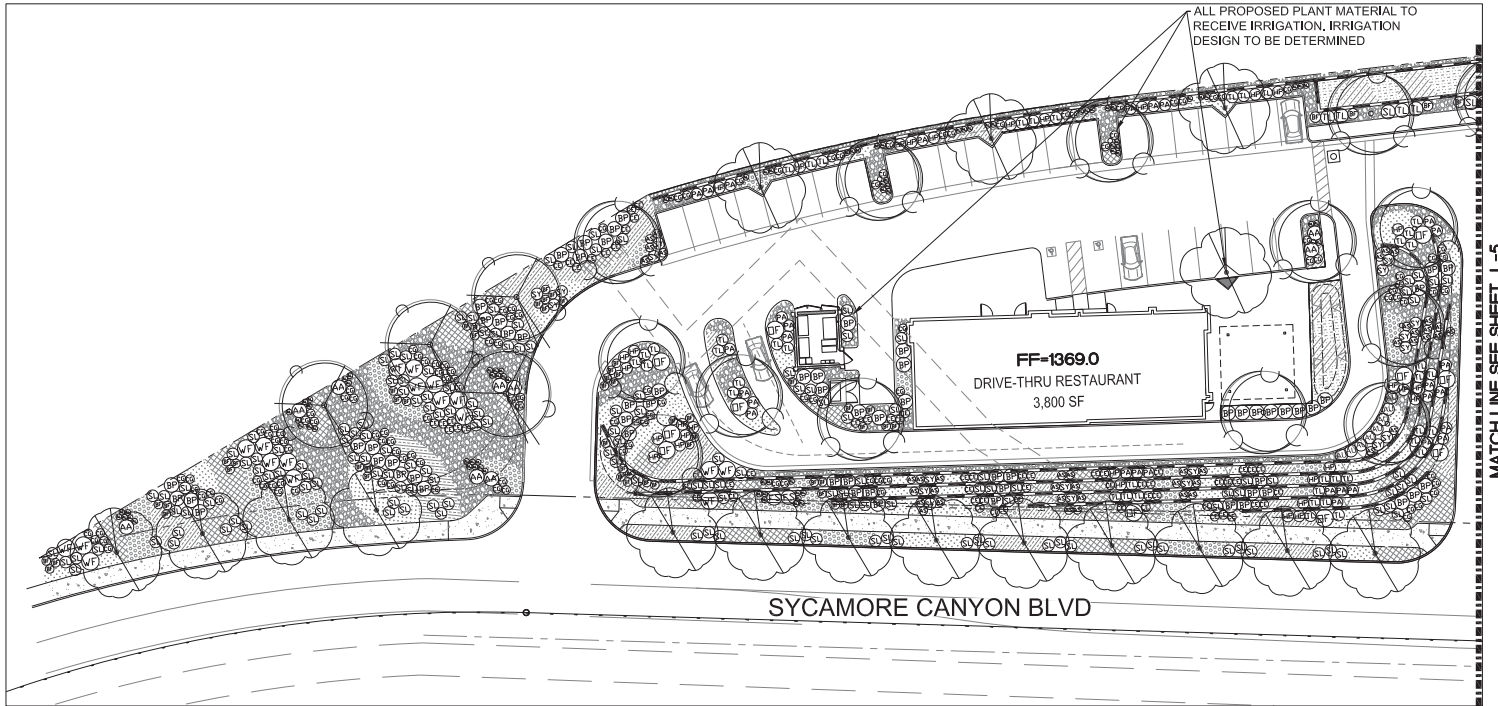
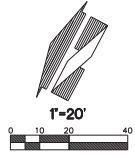
Scale:	Horizontal	N/A	Vertical	N/A
Designed <u>B.S.</u>	Drawn <u>B.S.</u>	Checked <u>MM</u>	Approved <u>MM</u>	Date <u>6-18-19</u>

18215 7TH AVENUE SOUTH
VAN NUYS, CA 91411
(423)251-8222 FAX
(423)251-8782 FAX
CIVIL ENGINEERING, LAND PLANNING
SURVEYING, ENVIRONMENTAL SERVICES



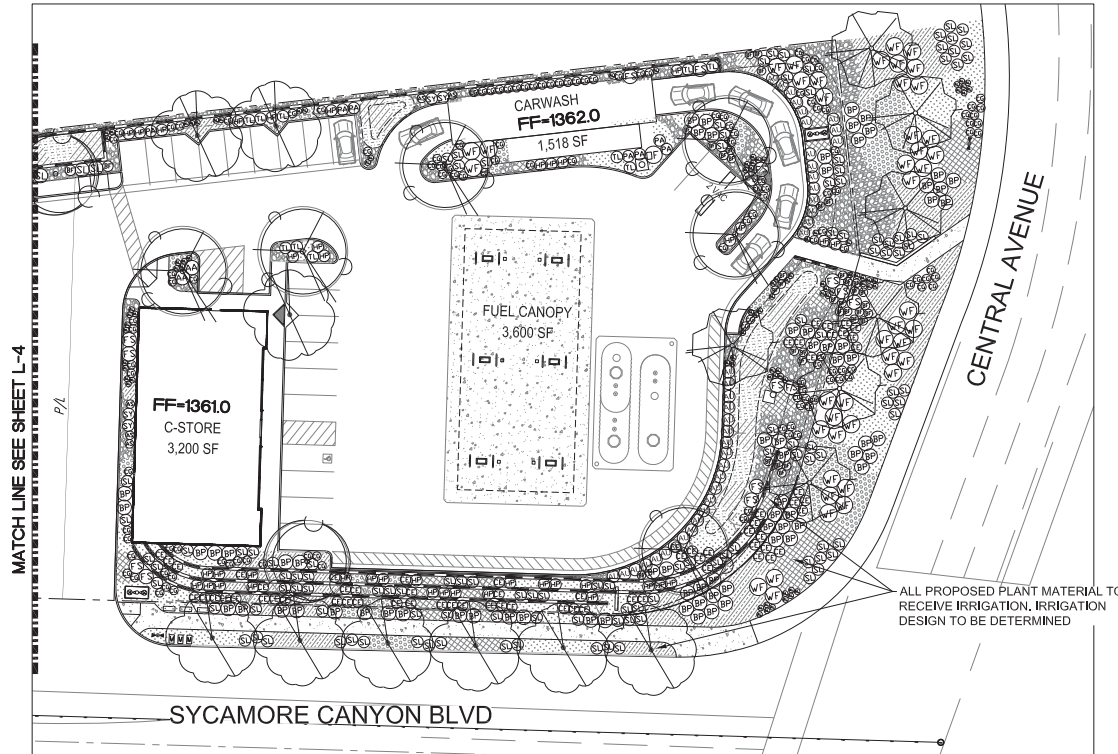
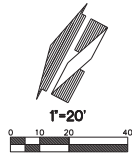
18447
L-3, 6

PRELIMINARY LANDSCAPE PLAN

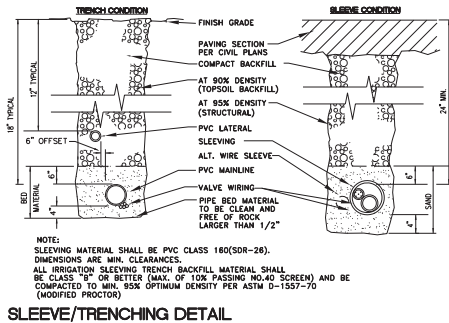


18447	L-4, 6		18215 7TH AVENUE SOUTH VAN NUYS, CA 91411 (425)251-6222 (425)251-8782 FAX CIVIL ENGINEERING, LAND PLANNING, SURVEYING, ENVIRONMENTAL SERVICES	Designer: JBS Drawn: JBS Checked: JML Approved: JML Date: 6-11-11	Scale: Horizontal: 20 Vertical: N/A		For:	5820 Oberlin Dr. Suite 201 San Diego, CA 92121 858/404-6080 fax 858/404-6081	LANDSCAPE PLAN KA ENTERPRISES MEGA MART Sycamore Canyon Blvd and Central Ave Riverside, CA
				Title:					

PRELIMINARY LANDSCAPE PLAN

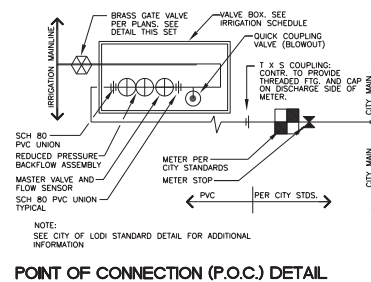


MATCH LINE SEE SHEET L-4



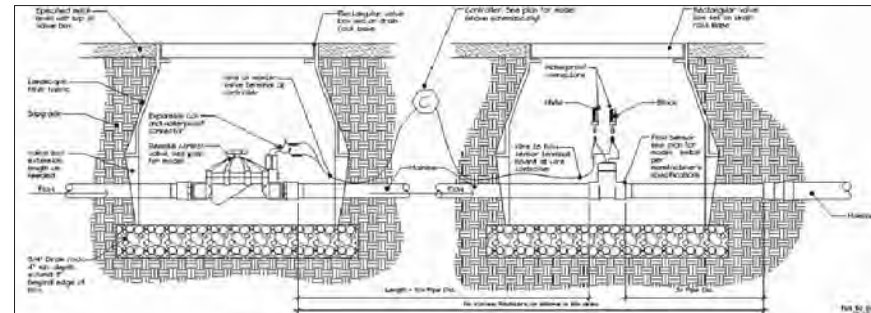
SLEEVE/TRENCHING DETAIL

NOT TO SCALE



POINT OF CONNECTION (P.O.C.) DETAIL

NOT TO SCALE



MASTER VALVE and FLOW SENSOR

NOT TO SCALE

IRRIGATION SCHEDULE

SYMBOL	DESCRIPTION	MIN. PSI	EMITTER SPACING GPM	EMITTER MAXIMUM LINEAR FT.
■	RAINBIRD RWS-B-C-1402 3/4" ROOT ZONE WATERING SYSTEM 2 EMITTERS PER TREE. SEE DETAILS THIS SET	20	AS SHOWN ON PLAN	50

SYMBOL	DESCRIPTION	MIN. PSI	EMITTER SPACING GPM	EMITTER MAXIMUM LINEAR FT.
■	NETAFIM LANDSCAPE TECHLINE DRIPLINE COMPONENTS: TO BE USED WITH NETAFIM LT-INSET-17MM FITTINGS	20	12"	26
■	TLV06-1210 - SUB-SURFACE DRIP IRRIGATION FOR PLANTING AREAS WITH GROUND COVER, SHRUBS AND TREES. ABOVE NOTED DRIPLINE IS DESIGNED WITH 26 GPM EMITTERS SPACED AT 12 INCHES APART AND A ROW SPACING OF 12 INCHES. THE APPLICATION RATE FOR THIS IS .42 INCHES OF WATER PER HOUR OF RUN TIME.	20	12"	26

- NO SYMBOL: NETAFIM: 10-CV-01: DRIP SYSTEM OPERATION/PRESSURE INDICATOR STAKES, PROVIDE FOR EACH ZONE
- NO SYMBOL: NETAFIM: TL56: SOIL, STAPLES, 1-2 FEET ON CENTER
- NO SYMBOL: NETAFIM: TL50V: DRIPLINE FLUSH VALVE: 1 PER IRRIGATION ZONE. LOCATE AT LOWEST ELEVATION WITHIN EACH ZONE, INSTALL IN 10" VALVE BOX
- NETAFIM: LVCZ-150-HF: CONTROL ZONE KIT: FLOW 11.0 - 35 GPM, 1 VALVE PER RAINBIRD VB SERIES BOX
- NETAFIM: LVCZ58010075-HF: CONTROL ZONE KIT: FLOW 4.5 - 17.6 GPM, 1 VALVE PER RAINBIRD VB SERIES BOX
- NEW VALVE FOR ROOT WATERING SYSTEM, RAINBIRD 100 AND 150 PESB, 1" AND 1-1/2" ELECTRIC REMOTE CONTROL VALVE
- RAINBIRD: ESP-LIMEF: IRRIGATION CONTROLLER, (HARDWARE CONNECTION); PROVIDE GROUND AND BATTERIES PER MFR. SPECS; COORDINATE WITH OWNER AND GENERAL CONTRACTOR FOR BEST LOCATION OF IRRIGATION CONTROLLER. IF LOCATION IS TO BE OUTSIDE, COORDINATE WHETHER THE CONTROLLER IS TO BE MOUNTED ON AN EXTERIOR BUILDING WALL OR MOUNTED ON A METAL PEDESTAL WITH CONE FOOTING.
- RAINBIRD 33 DUC: 3/4" QUICK COUPLING VALVE, IN VALVE BOX, PROVIDE THREE KEYS AND HOSE SWIVELS BRASS GATE VALVE, 1-1/2" SIZE, IN VALVE BOX. SEE DETAIL THIS SET
- RAINBIRD WR2-HFC: WIRELESS RAIN AND FREEZE SENSOR COMBO, MOUNT WHERE TREES OR BUILDINGS WILL NOT OBSTRUCT RAIN, WIND OR FROST FROM SENSOR.
- RAINBIRD EFB-CP 1" MASTER VALVE AND F5100B 1" FLOW SENSOR. SEE DETAIL THIS SET.
- WIRE FLOW SENSOR BACK TO CONTROLLER WITH PE-39 DATA CABLE
- ZURN 34-600XL PRESSURE REDUCING VALVE. SIZE TO MATCH PIPE. INSTALL PER DETAIL THIS SET

- P.O.C. NEW 2" WATER METER AND REDUCED PRESSURE BACKFLOW ASSEMBLY
- MANLINE - SCH 40 PVC (18" COVER); 1-1/2" SIZE MINIMUM
- LATERAL - SCH 40 PVC (12" COVER); SIZE PER PLAN, 3/4" SIZE MINIMUM
- SLEEVE - CLASS 200 PVC; 24" MINIMUM COVER AT VEHICLE CROSSINGS, TWICE THE SIZE OF INSERT PIPE AND/OR WIRES, 6" SIZE MINIMUM, COORDINATE WITH GENERAL AND PAVING CONTRACTORS
- TYPICAL VALVE CALL-OUT
- VALVE STATION NUMBER
- VALVE GPM
- VALVE SIZE

SCH 40 PIPE SIZING CHART

PIPE SIZE	3/4"	1"	1 1/4"	1 1/2"	2"	2 1/2"	GPM (MAX.)
FLOW	1-8	8.1-13	13.1-23	23.1-32	32.1-53	53.1-74	

LANDSCAPE PLAN
KA ENTERPRISES MEGA MART
Sycamore Canyon Blvd and Central Ave
Riverside, CA

5620 Oberlin Dr, Suite 201
San Diego, CA 92121
858/404-6080
fax 858/404-6081



Scale: Horizontal 20' Vertical N/A
Designed: JBS
Drawn: JBS
Checked: JBS
Approved: JBS
Date: 4/11/18

18215 77ND AVENUE SOUTH
SUITE 201
(425)251-6222 FAX
(425)251-8782
CIVIL ENGINEERING, LAND PLANNING
SURVEYING, ENVIRONMENTAL SERVICES

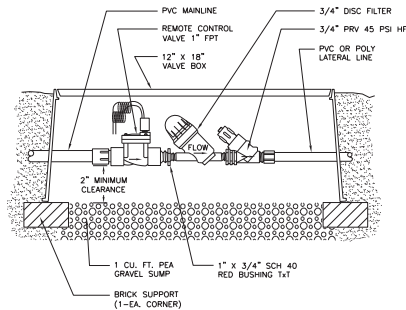


18447
L-5, 6

PRELIMINARY IRRIGATION NOTES AND DETAILS

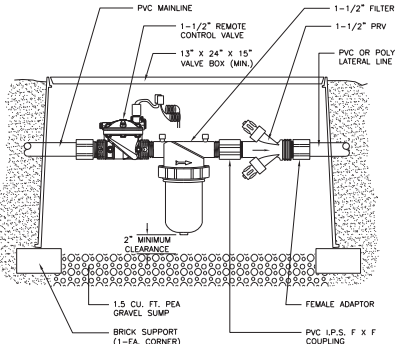
LANDSCAPE IRRIGATION NOTES

- GENERAL CONTRACTOR AND LANDSCAPE CONTRACTOR TO COORDINATE:
- INSTALLATION OF 110V ELECTRICAL SERVICE FROM ELECTRICAL SOURCE TO AUTOMATIC CONTROLLER, INCLUDING WIRE HOOK-UP INTO AUTOMATIC CONTROLLER. IRRIGATION CONTRACTOR WILL MOUNT CONTROLLER PER DESIGN AND COORDINATE WITH GENERAL CONTRACTOR.
- INSTALLATION OF IRRIGATION/SERVICE METER AND STUB TO IRRIGATION POINT OF CONNECTION, PER UTILITY PLANS. PROVIDE STANDARD THREADED STUB-OUT WITH THREADED CAP ON DISCHARGE SIDE OF METER. STUB-OUT TO BE INSTALLED APPROXIMATELY 18 INCHES BELOW FINISH GRADE.
- VERIFICATION OF STATIC WATER PRESSURE AT POINT-OF-CONNECTION (P.O.C.) CONTRACTOR SHALL NOTIFY OWNER AND BARGHAUSEN CONSULTING ENGINEERS, INC., OF ANY VARIATION IN STATIC PRESSURE OVER 5 PSI GREATER/LESS THAN DESIGN PRESSURE.
- INSTALLATION OF SLEEVING.
- LANDSCAPE CONTRACTOR TO DETERMINE AVAILABLE WATER PRESSURE AND PROVIDE WRITTEN PRESSURE RESULTS TO LANDSCAPE ARCHITECT PRIOR TO BEGINNING ANY WORK.
- ALL WORK PER LOCAL CODE. INSTALLATION PER MANUFACTURER'S WRITTEN SPECIFICATIONS.
- ALL VALVES TO BE PLACED IN RAINBIRD VB SERIES BOXES WITH BOLT-LOCK LIDS (OR APPROVED EQUIVALENT). SET BOXES 2 INCHES HIGHER THAN FINISH GRADE IN LANDSCAPE AREAS AND FLUSH WITH FINISH GRADE IN LAWN AREAS. JUMBO BOX FOR CHECK VALVE, 10" ROUND BOX FOR GATE/SHOCK COUPLER/WIRE SPLICES, AND 12" STANDARD FOR CONTROL VALVES. PROVIDE BOX EXTENSIONS AS REQUIRED.
- MAINLINE PIPE TO BE BURIED 18 INCHES AND LATERALS 12 INCHES BELOW FINISH GRADE. NO ROCK OR DEBRIS TO BE BACKFILLED OVER PIPE.
- IRRIGATION DESIGN SHOWN DIAGRAMMATICALLY FOR PLAN CLARITY. PRIOR TO INSTALLATION OF DRIP IRRIGATION, CONTRACTOR IS REQUIRED TO CONTACT LOCAL NETAFFM REPRESENTATIVE FOR TRAINING ON THE INSTALLATION AND RUN TIME MANAGEMENT OF DRIP SYSTEM AND NOTIFY LANDSCAPE ARCHITECT THAT FACTORY TRAINING HAS OCCURRED PRIOR TO INSTALLATION. CONTACT CALIFORNIA NETAFFM LANDSCAPE & TURF REPRESENTATIVE. PLEASE GIVE REPRESENTATIVE A MINIMUM TWO WEEK NOTICE.
- DRIP TUBING SHALL BE INSTALLED FOUR (4) INCHES BELOW FINAL GRADE. CONTRACTOR TO RUN EACH ZONE BEFORE COVERING TUBING, TO VERIFY THAT THERE ARE NO CONNECTION LEAKS. TREES TO BE INSTALLED ON A SEPARATE ZONE, USING NETAFFM TLCOV 26 18, REFER TO THE TREE IRRIGATION DETAIL FOR ADDITIONAL INFORMATION.
- PROVIDE OWNER WITH TWO (2) SETS "AS-BUILT" DRAWINGS AND (3) SETS OF OPERATOR'S MANUALS UPON COMPLETION. INSTRUCT OWNER AS TO PROPER OPERATION AND WINTERIZATION OF THE IRRIGATION SYSTEM.
- FAMILIARIZE OWNERS FACILITY OPERATOR WITH IRRIGATION SYSTEM FUNCTION, CONTROLLER PROGRAMMING, SYSTEM OPERATION AND MAINTENANCE REQUIREMENTS.
- ALL CONTROL WIRE SPLICES TO BE MADE AT VALVE BOXES WITH WATER TIGHT ELECTRICAL SPLICES, 3M, SCOTT'S LOCK SEAL TACK 3576-78, OR EQUIVALENT.
- EACH VALVE BOX TO CONTAIN A MINIMUM OF TWO (2) SPARE ORANGE CONTROL WIRES FOR JACKETED WIRE. ROUTE SPARE WIRES FROM THE CONTROLLER TO THE LAST VALVE OF EACH MAINLINE BRANCH. COMMON WIRE TO BE WHITE. SINGLE STRAND WIRE TO BE A MINIMUM OF 14 GAUGE.
- ALL ELECTRICAL EQUIPMENT TO BE U.L. TESTED AND APPROVED, AND BEAR THE U.L. LABEL.
- CROSS CONNECTION PROTECTION INSPECTION REQUIRED. THE BACKFLOW DEVICE TO BE TESTED UPON THE ORIGINAL INSTALLATION. THE TESTING TO BE PERFORMED BY A PERSON HOLDING A CURRENT CERTIFICATE AS A BACKFLOW TESTER. THE TEST REPORT TO BE SUBMITTED TO THE LOCAL WATER DISTRICT, OR PURVEYOR, AND OWNER WITH A COPY TO BARGHAUSEN CONSULTING ENGINEERS, INC. CONTRACTOR TO INCLUDE TESTING IN THE SCOPE OF WORK. OWNER IS RESPONSIBLE FOR ANNUAL INSPECTIONS AFTER THE INITIAL INSPECTION.
- IRRIGATION SCHEDULING: THE IRRIGATION CONTROLLER CONTAINS A WATER BUDGET FEATURE. PERIODIC (WEEKLY) ADJUSTMENT OF THE WATER SCHEDULE IS INTENDED TO BE MADE VIA BUDGET ADJUSTMENT. RE-ADJUST WATERING DAYS AT 100 PERCENT BUDGET WHEN ADJUSTMENT EXCEEDS 30%. SET CONTROLLER FOR HIGHEST ETO WATER SCHEDULE, BASED ON PUBLISHED LOCAL EVAPOTRANSPIRATION DATA. SYSTEM HAS BEEN DESIGNED FOR 50 TO 80 PERCENT DISTRIBUTION UNIFORMITY. LAWN ZONES SHOULD BE SCHEDULED FOR 100 PERCENT REPLACEMENT FACTOR ON A TYPICAL MINIMUM 3-DAY CYCLE. SHRUB ZONES SHOULD BE PROGRAMMED AT 40 TO 70 PERCENT OF THE MONTHLY LAWN WATER REQUIREMENT ON A ONCE PER WEEK CYCLE. ALL WATERING IN EXCESS OF THE LOCAL ETO ("FIELD RECHARGE") TO BE COMPLETED DURING THE CONSTRUCTION PHASE WHILE THE CONTRACTOR IS ON THE JOB SITE. OVER WATERING OF LANDSCAPE DUE TO CONTROLLER SCHEDULING TO BE GROUNDS FOR CONTRACTOR TO REPAIR ANY RESULTANT DAMAGES AT CONTRACTOR'S OWN EXPENSE.
- SUBSTITUTION OF IRRIGATION MATERIAL/EQUIPMENT TO BE MADE ONLY UPON WRITTEN APPROVAL OF LANDSCAPE ARCHITECT AND OWNER'S REPRESENTATIVE.
- ALL ZONES TO PASS A MINIMUM DISTRIBUTION UNIFORMITY WATER AUDIT, AS REQUIRED BY THE STATE OF CALIFORNIA'S WATER EFFICIENT LANDSCAPE ORDINANCE, AS ADOPTED BY THE CITY COUNCIL. AN IRRIGATION ASSOCIATION CERTIFIED WATER AUDIT REPORT TO BE PROVIDED TO THE CITY.



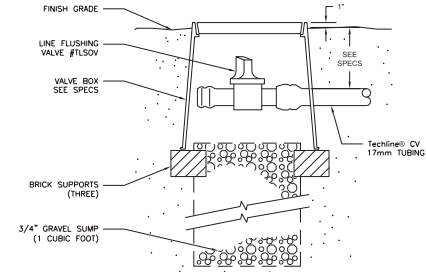
LOW-VOLUME CONTROL ZONE ASSEMBLY:

P/N LVCZS80-10075-HF 4.5 - 17.6 GPM NOT TO SCALE DETAIL - L211HF



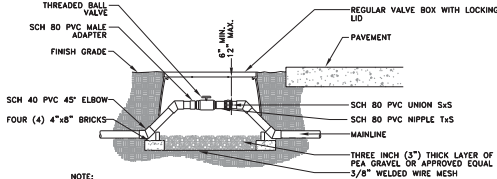
COMMERCIAL CONTROL ZONE ASSEMBLY:

P/N LVCZ-150 11 - 35 GPM NOT TO SCALE DETAIL - L223



MANUAL LINE FLUSHING VALVE TSOV PLUMBED TO TUBING

NOT TO SCALE DETAIL - D211

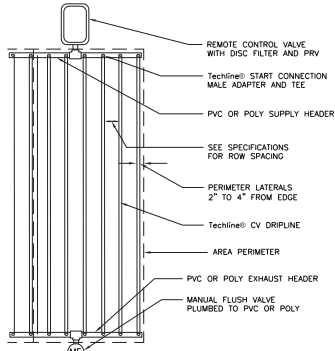


NOTES:

- LOCATE VALVE BOXES IN PLANTING AREAS.
- WRAP VALVE BOX WITH A MINIMUM OF 3 MIL THICK PLASTIC AND SECURE IT USING DUCT TAPE OR ELECTRICAL TAPE.
- ALL THREADED CONNECTIONS TO BE MADE USING TEFLON TAPE.
- ALL CHANGES IN ELEVATION SHALL BE MADE USING SCH 40 PVC 45° ELBOWS.

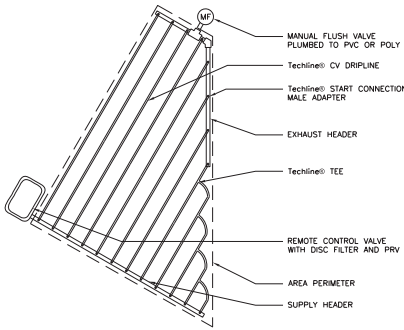
BALL VALVE DETAIL

NOT TO SCALE



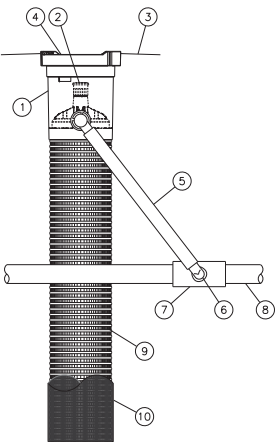
Techline® CV END FEED LAYOUT

NOT TO SCALE DETAIL - C101



Techline® CV IRREGULAR AREAS: Triangular

NOT TO SCALE DETAIL - C104



NOTES:

- 4" (10.2 CM) GRATE IS ALSO AVAILABLE IN PURPLE (RWS-GRATE-P).
- INSTALL PRODUCT SO THAT THE GRATE IS EVEN WITH FINISH GRADE OR TOP OF MULCH.
- OPTIONAL SAND SOCK (RWS-SOCK) IS 34" (86.4 CM) IN LENGTH TO COVER MESH BASKET AREA.
- WHEN INSTALLING IN EXTREMELY HARD OR CLAY SOILS, ADD 3/4" (1.9 CM) GRAVEL UNDER AND AROUND THE UNIT TO ALLOW FASTER WATER INFILTRATION AND ROOT PENETRATION.
- ONCE RWS HAS BEEN INSTALLED FILL THE BASKET WITH PEA GRAVEL BEFORE LOCKING LID.

ROOT WATER SYSTEM DETAIL

NOT TO SCALE

PRELIM IRRIGATION NOTES AND DETAILS
KA ENTERPRISES MEGA MART
Sycamore Canyon Blvd and Central Ave
Riverside, CA

5820 Oberlin Dr. Suite 201
San Diego, CA 92121
858/404-6080
fax 858/404-6081



For



Scale: Horizontal N/A, Vertical N/A
Designed: JBS, Drawn: JBS, Checked: JBS, Approved: JBS, Date: 8-11-17

18215 79ND AVENUE SOUTH
VAN NUYS, CA 91411
(425)251-8222 FAX
(425)251-8782
CIVIL ENGINEERING, LAND PLANNING
SURVEYING, ENVIRONMENTAL SERVICES



18447
L-6, 6