



TRANSITIONAL WATER SERVICE AGREEMENTS BETWEEN OLIVEWOOD MEMORIAL PARK, EVERGREEN MEMORIAL HISTORIC CEMETERY, AND EVERGREEN MEMORIAL PARK & MAUSOLEUM AND THE CITY OF RIVERSIDE

Resource Operations and Strategic Analytics – Customer Engagement

Water Committee
Board of Public Utilities
June 10, 2019

HISTORICAL CEMETERIES

1. Home of early Riverside founders
 - a. John W. North
 - b. Luther and Eliza Tibbets
 - c. Samuel C. Evans
 - d. Matthew Gage
 - e. Raymond Best
2. WA-7 “Special Metered Service” rate included historical cemeteries with intent of preserving City’s historical sites
3. Evergreen managed by two entities:
 - a. Evergreen Memorial Park & Mausoleum
 - b. Evergreen Memorial Historic Cemetery



Olivewood Memorial Park, 1925

Credit: Olivewood Memorial Park



Evergreen Cemetery

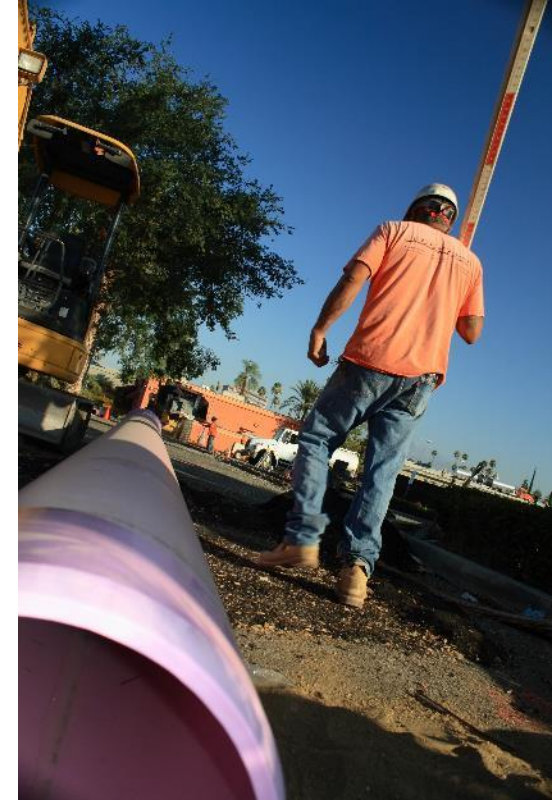
Credit: Gerald Wayne Dow

RATE PLAN IMPACT ON CEMETERIES

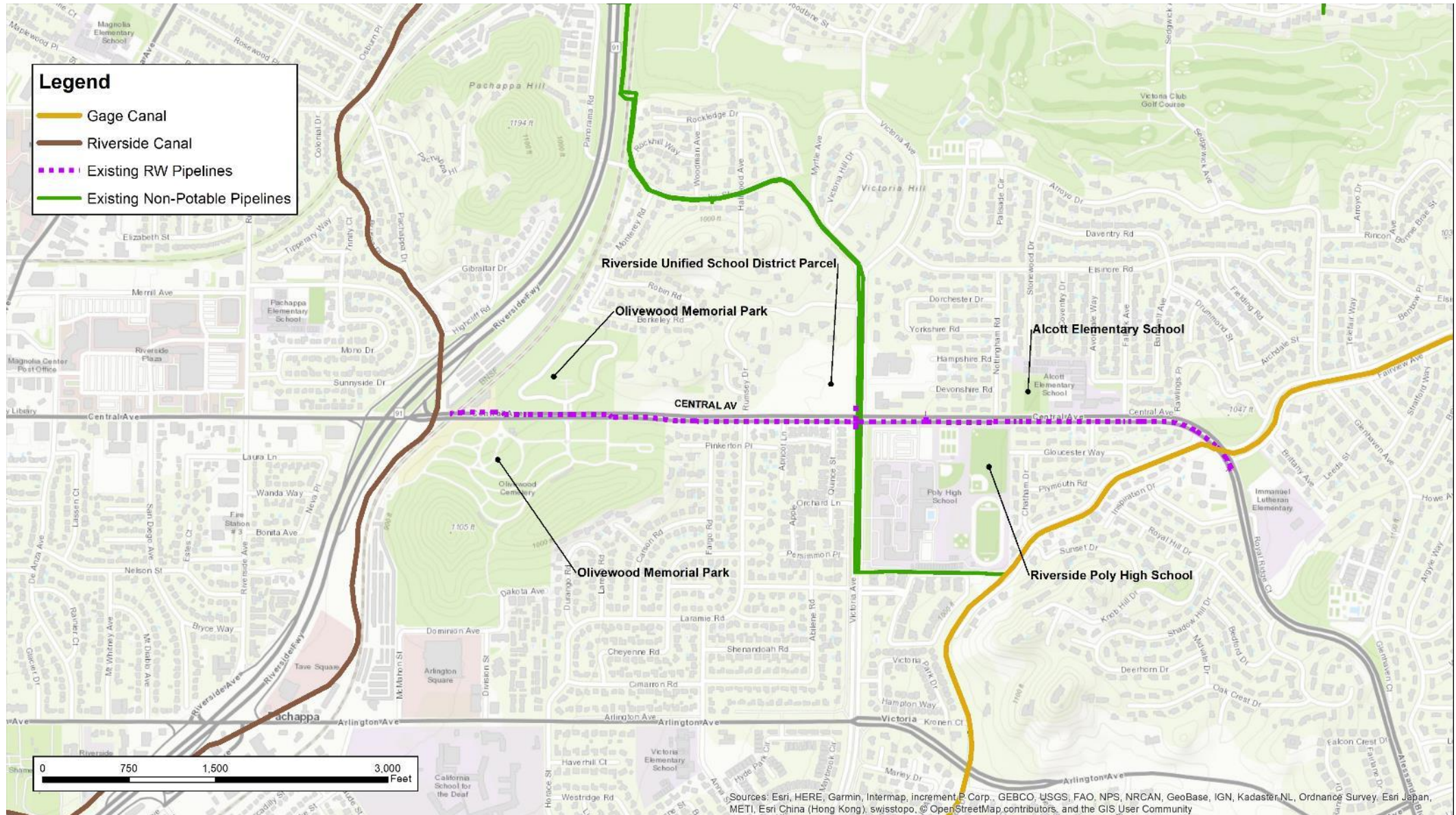
1. May 22, 2018: City Council adopts five-year water rate plan, effective July 1, 2018
2. Cost of Service Study determined Schedule WA-7 not collecting all costs for service; changed from “Special Metered Services” to “Interruptible Irrigation Service”
3. As a result, historical cemeteries would be transitioned to WA-11 “Landscape Irrigation Metered Service” or WA-6 “Commercial and Industrial Metered Service,” depending on applicability
4. RPU offered transitional water service agreements to the historic cemeteries

ALTERNATIVE WATER SUPPLIES

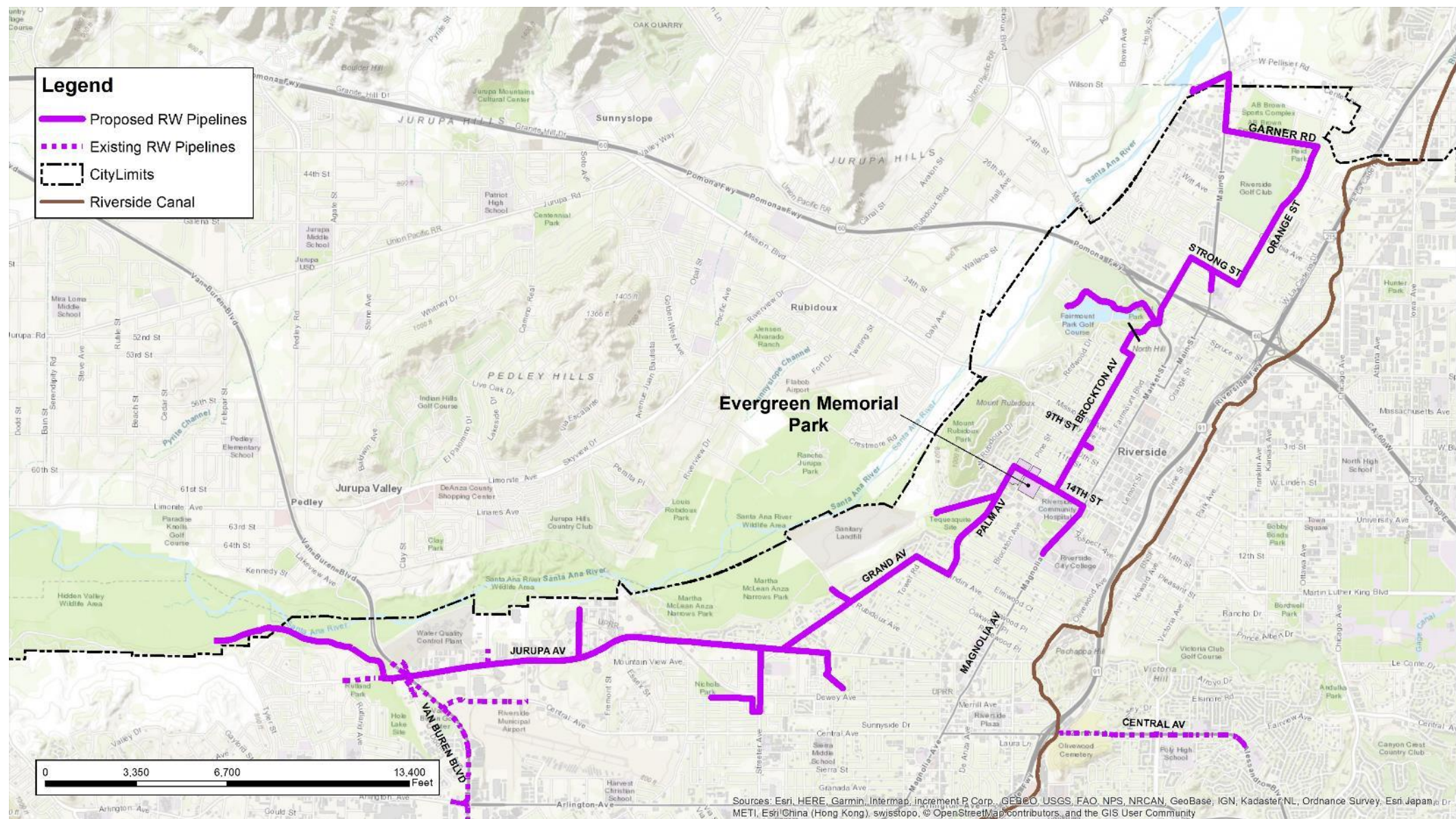
1. Cemeteries identified as prospective non-potable/recycled water customers
2. Invested in part of necessary infrastructure to take non-potable/recycled water from the City when available
3. City does not currently have sufficient infrastructure to deliver non-potable/recycled water to cemeteries
4. City does has plans to develop necessary infrastructure



ALTERNATIVE WATER SUPPLIES – OLIVEWOOD



ALTERNATIVE WATER SUPPLIES – EVERGREEN



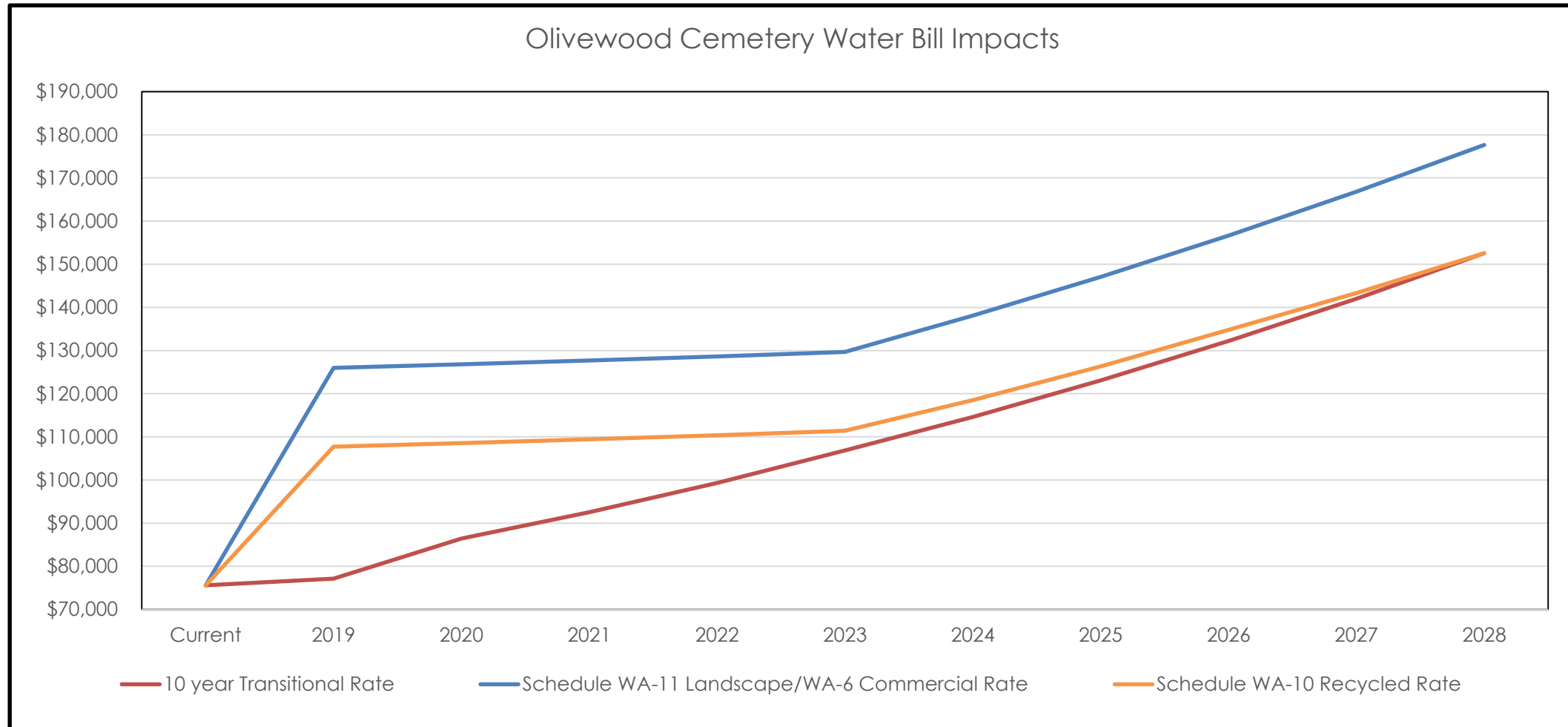
ALTERNATIVE WATER SUPPLIES

5. Potential additional language in Agreement to clarify requirement to take non-potable/recycled water service when available
 - a. Section 2.7: “Customer agrees that if City is able to provide recycled water service that Customer shall take such recycled water service ***within a commercially reasonable time.***”
 - b. Section 6.1: “***In the event City is able to provide non-potable water service to Customer’s Site, Customer shall take such non-potable water service within a commercially reasonable time.***”

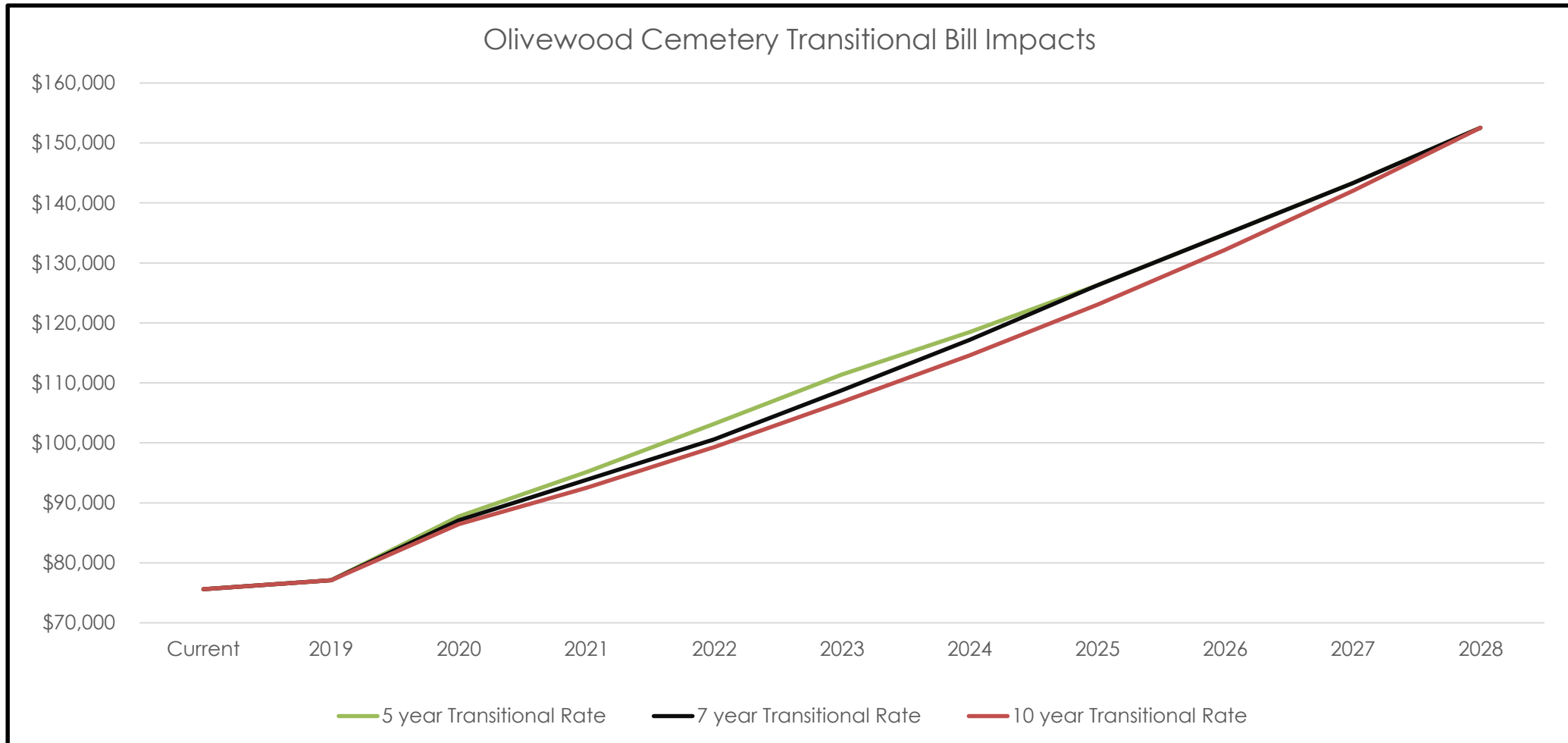
OLIVEWOOD TRANSITIONAL RATE

	Quantity Rate All Usage per CCF	Customer Charge 4" Meter		Quantity Rate All Usage per CCF	Customer Charge 4" Meter
Year 1	\$ 1.15	\$ 232.95	Year 6	\$ 1.61	\$ 407.86
Year 2	\$ 1.23	\$ 266.44	Year 7	\$ 1.73	\$ 434.37
Year 3	\$ 1.31	\$ 302.52	Year 8	\$ 1.86	\$ 462.60
Year 4	\$ 1.40	\$ 340.10	Year 9	\$ 2.00	\$ 492.67
Year 5	\$ 1.50	\$ 382.97	Year 10	\$ 2.15	\$ 524.69

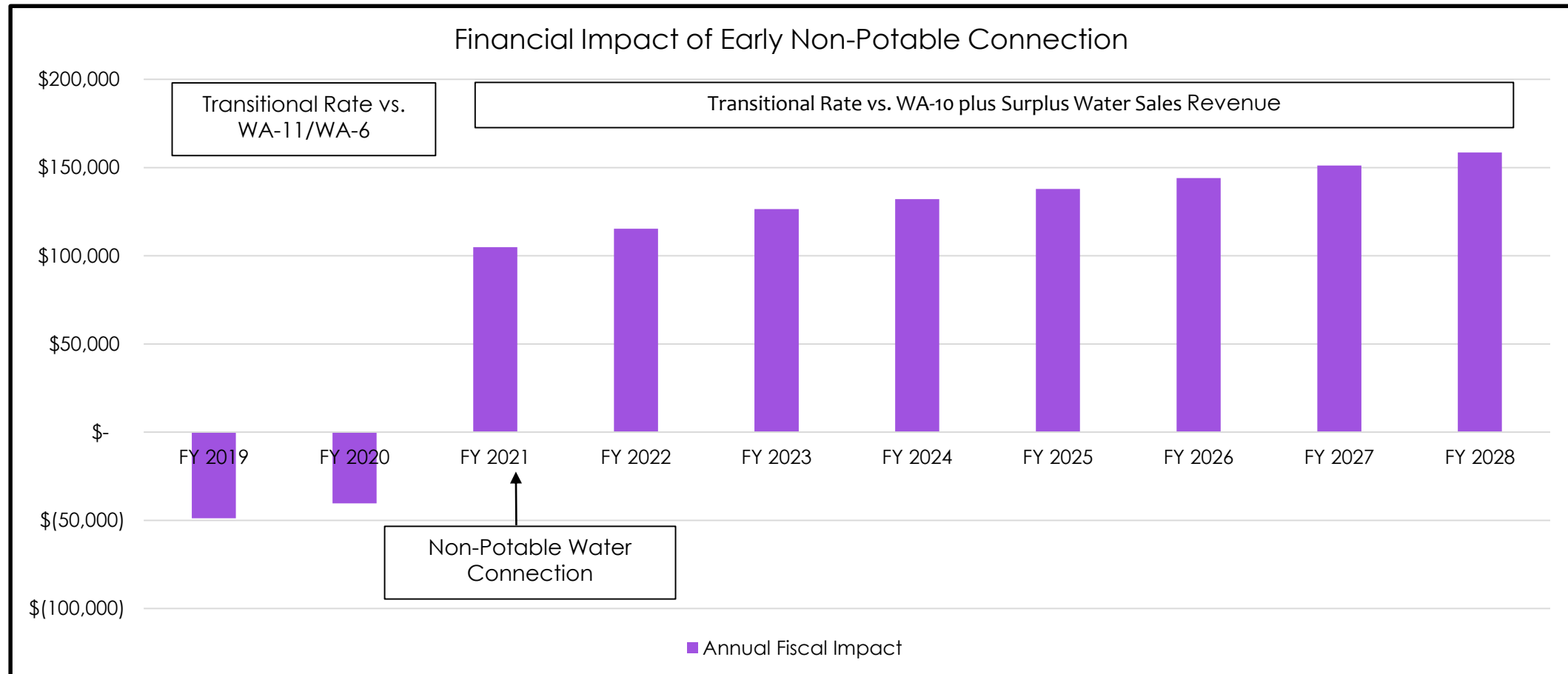
10-YEAR TRANSITIONAL RATE



TRANSITIONAL RATE OPTIONS

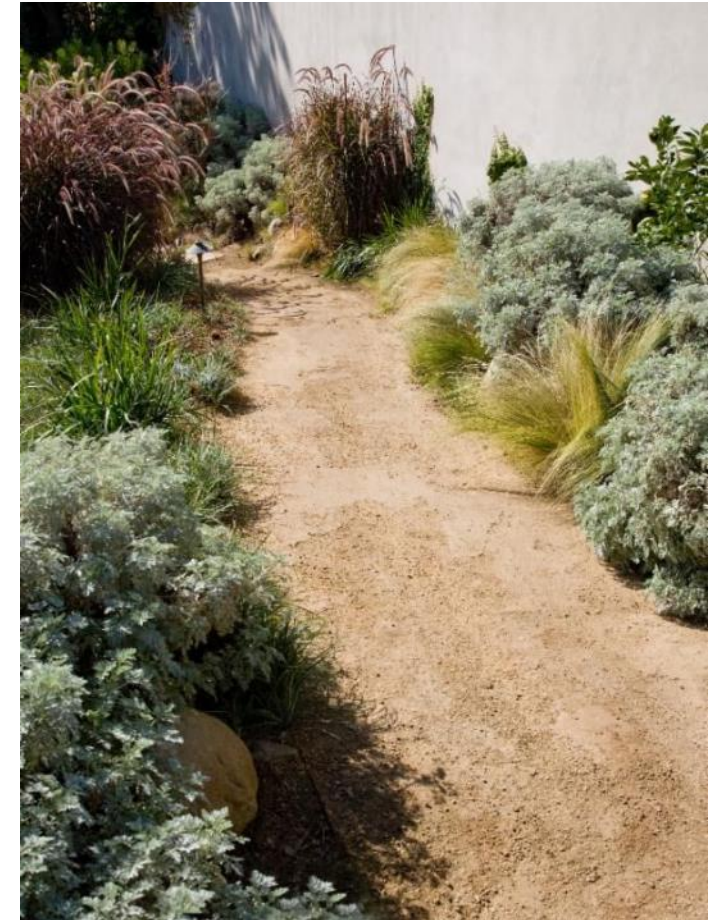


FINANCIAL IMPACT OF EARLY CONNECTION TO NON-POTABLE/RECYCLED WATER



ADDITIONAL COLLABORATIVE EFFORTS

1. Comprehensive water audit to identify indoor and outdoor conservation and efficiency updates
 - a. Potential additional language:
“Customer commits to implementing cost-effective and feasible conservation and efficiency updates identified in the water audit.”
2. Analyze and review potential rebate programs to help offset costs for any water and electric upgrades



RECOMMENDATIONS

That the Water Committee recommend that the Board of Public Utilities recommend that the City Council:

1. Approve the Transitional Water Service Agreement with Olivewood Memorial Park, as amended by the Water Committee;
2. Approve transitional water service agreements with Evergreen Memorial Historic Cemetery and with Evergreen Memorial Park & Mausoleum with similar terms to the Transitional Water Service Agreement with Olivewood Memorial Park, as amended by the Water Committee; and
3. Authorize the City Manager, or his designee, to execute transitional water service agreements with Olivewood Memorial Park, Evergreen Memorial Historic Cemetery, and Evergreen Memorial Park & Mausoleum, including making minor, non-substantive changes, to sign all documents and instruments necessary to complete the transaction, and to execute amendments.