



RIVER-SIDE GATEWAY PARK PROJECT SUITE

**Parks, Recreation and Community Services
Department**

Park and Recreation Commission

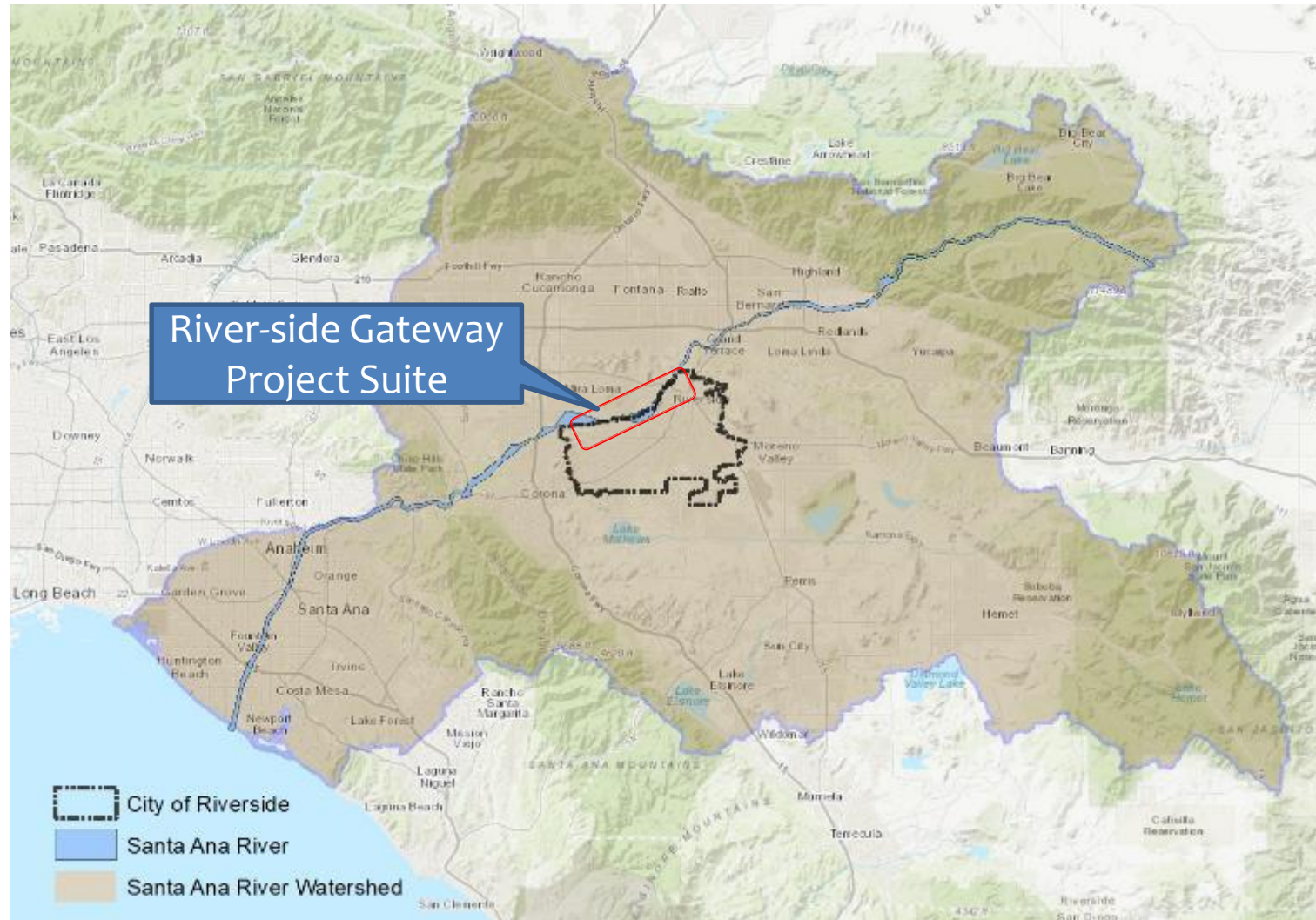
June 17, 2019

BACKGROUND

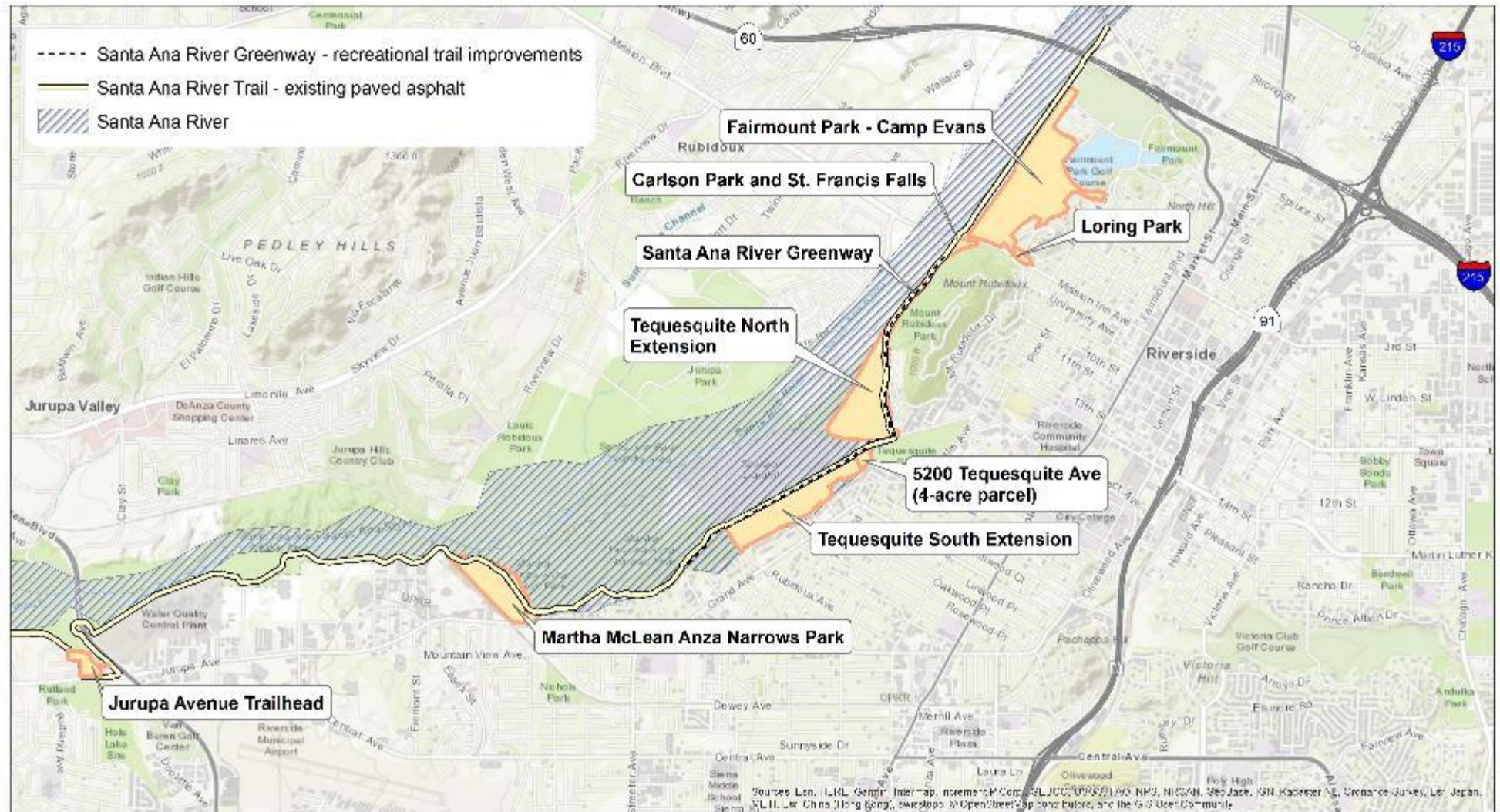
1. Santa Ana River Task Force (2003 and 2009) recommends improvements to parks and open spaces along the Santa Ana River.
2. In 2014, the Santa Ana River Conservancy was formed under the State Coastal Conservancy. Grant funding is available.
3. \$2.3 million application for a suite of 9 projects along the City's Northern boundary. The River-side Gateway Project Suite, includes parkland acquisition, planning, conceptual design and environmental compliance.



RIVER-SIDE GATEWAY PROJECT SUITE

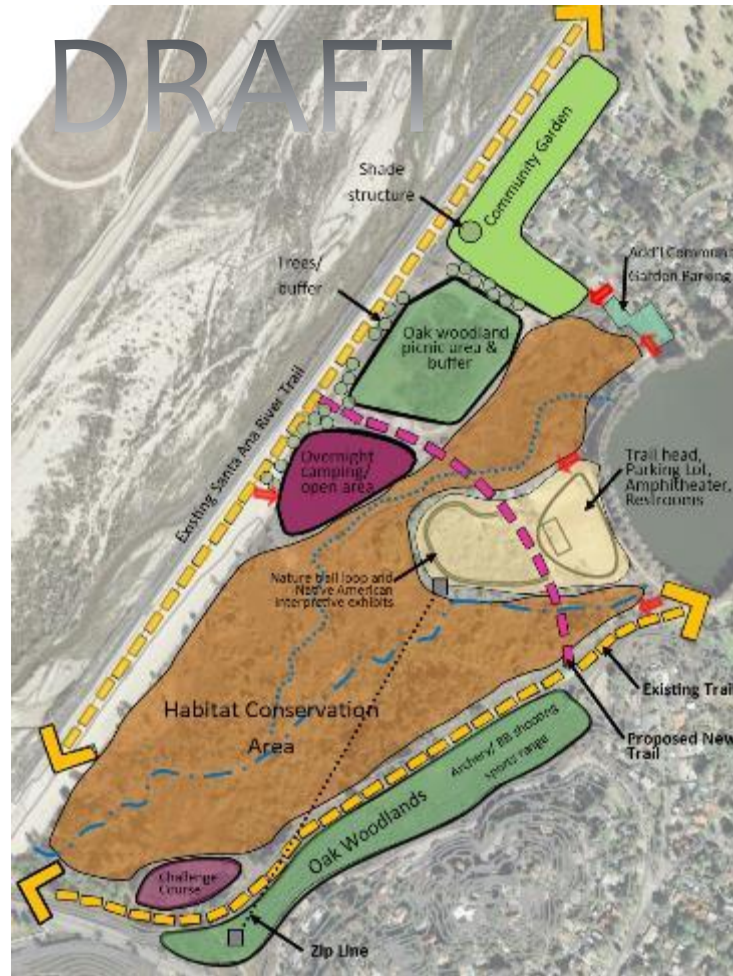


RIVER-SIDE GATEWAY PROJECT SUITE



DRAFT IMPROVEMENT IDEAS

FAIRMOUNT PARK - CAMP EVANS MASTER PLAN



1. Habitat conservation area
2. Oak woodlands
3. Trailhead parking lot
4. Small amphitheater
5. Restrooms
6. Nature/cultural interpretive trail
7. Challenge course
8. Zip line
9. Camping area
10. Picnic area
11. Community garden
12. Archery/BB shooting sports range
13. Improved Fire Dept access

EXISTING SITE CONDITIONS

FAIRMOUNT PARK - CAMP EVANS MASTER PLAN



EXISTING SITE CONDITIONS

FAIRMOUNT PARK - CAMP EVANS MASTER PLAN



DRAFT IMPROVEMENT IDEAS

LORING PARK - MASTER PLAN



1. Walking trails
2. Stairs – connect to Camp Evans and SART
3. Vista point
4. Landscape and irrigation
5. Parkour/exercise stations
6. Public art

EXISTING SITE CONDITIONS

LORING PARK



DRAFT IMPROVEMENT IDEAS

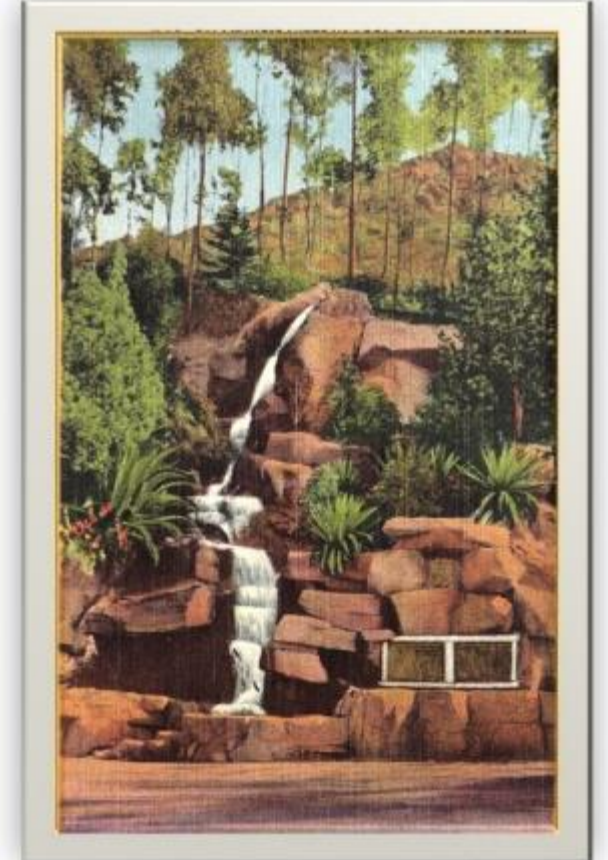
CARLSON PARK – STRUCTURAL ANALYSIS AND FEASIBILITY STUDY FOR RENOVATION OF ST. FRANCIS FALLS AND INSTALLATION OF HISTORIC ENTRY SIGN



1. Have a public art competition to receive proposals to renovate historic water feature to use lights or other artistic method to simulate running water rather than re-establishing water in the falls.
2. Re-install the historic neon sign on the hillside above Carlson Park and Mission Inn Ave

HISTORIC CONDITIONS

CARLSON PARK – ST. FRANCIS FALLS



St. Francis Falls, circa 1930-50

EXISTING SITE CONDITIONS

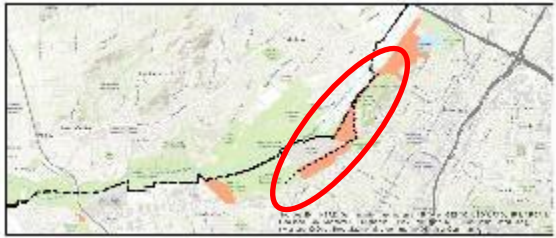
CARLSON PARK – ST. FRANCIS FALLS



St. Francis Falls, 2019

DRAFT IMPROVEMENT IDEAS

SANTA ANA RIVER GREENWAY – RECREATIONAL TRAIL IMPROVEMENTS



1. Add decomposed granite trail parallel to existing paved asphalt trail to separate slower pedestrian traffic
2. Trees, landscaping, irrigation
3. Lighting
4. Signage
5. Emergency phones
6. Drinking fountains
7. Seating/rest areas

■ ■ ■ Santa Ana River Greenway Recreational Trail Improvements
— Santa Ana River Trail

EXISTING SITE CONDITION

SANTA ANA RIVER GREENWAY



DRAFT IMPROVEMENT IDEAS

TEQUESQUITE NORTH EXTENSION – MASTER PLAN AND TRAILHEAD IMPROVEMENTS



1. Habitat
2. Native plant interpretive garden
3. SART trailhead with signage, rest area, drinking fountain
4. Bike repair café
5. Educational/interpretive trails
6. Lighting
7. Vehicle access control to block unauthorized access to river bottom

— Santa Ana River Trail
- - - Santa Ana River Greenway

EXISTING SITE CONDITIONS

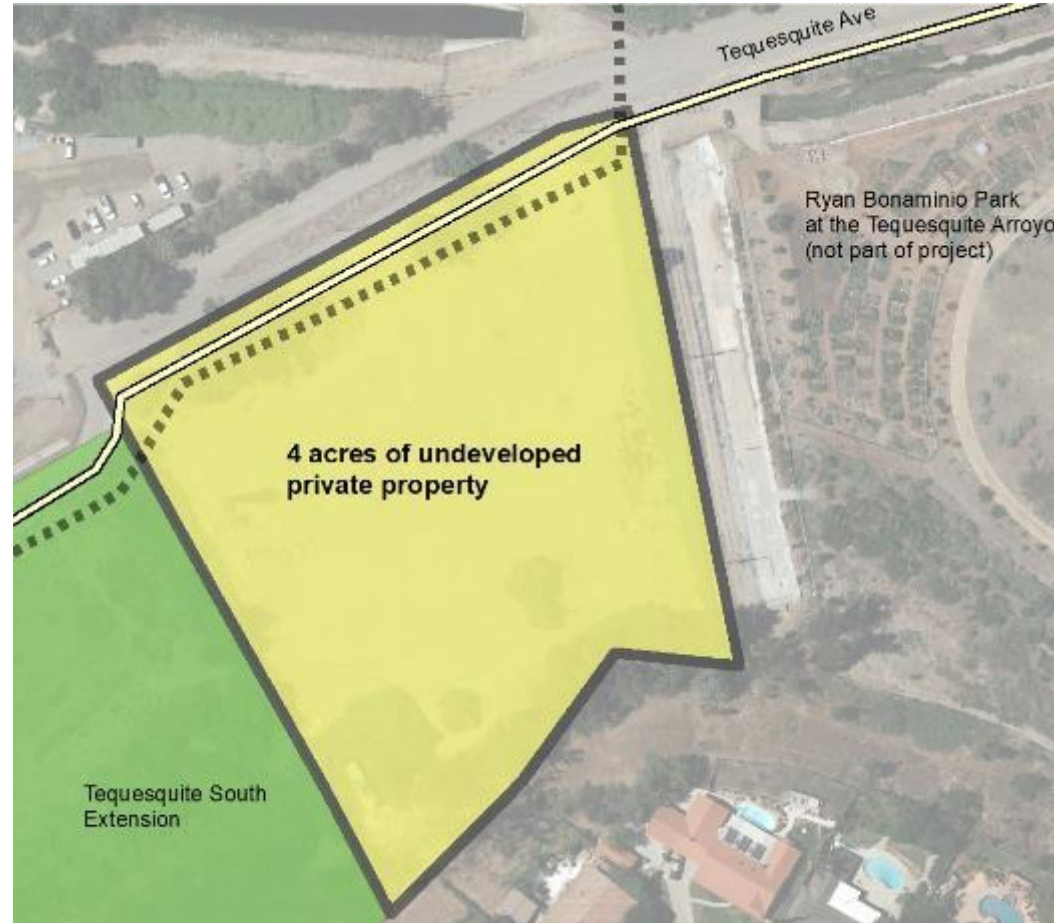
TEQUESQUITE NORTH EXTENSION



LOCATION FOR PROPOSED BIKE REPAIR CAFÉ

DRAFT IMPROVEMENT IDEAS

5200 TEQUESQUITE AVE – ACQUISITION AND MASTER PLAN FOR 4-ACRES OF PRIVATE PROPERTY



1. Acquisition
2. Dog park
3. Skate park
4. Community garden expansion, agriculture

— Santa Ana River Trail
■ ■ ■ Santa Ana River Greenway

EXISTING SITE CONDITIONS

5200 TEQUESQUITE AVE



DRAFT IMPROVEMENT IDEAS

TEQUESQUITE SOUTH EXTENSION – MASTER PLAN



1. Habitat
2. Agriculture, small farm incubator
3. Educational/interpretive trails
4. Oak woodlands
5. Nature playground
6. Dog park – depending on community input
7. Horse stables with rentals and classes
8. Skate park

EXISTING SITE CONDITIONS

TEQUESQUITE SOUTH EXTENSION



DRAFT IMPROVEMENT IDEAS

MARTHA MCLEAN ANZA NARROWS PARK – RIVERSIDE GATEWAY MASTER PLAN



—●— Santa Ana River Trail

—●— Santa Ana River Greenway

1. River Gateway improvements
2. Circulation & vehicular control throughout park
3. Remove and relocate existing restroom
4. Santa Ana River Trail monument sign on Jurupa Ave
5. Landscape and irrigation refurbishment throughout park, California native plants
6. Recreational decomposed granite trail along park edge adjacent to existing paved Santa Ana River Trail

DRAFT IMPROVEMENT IDEAS

MARTHA MCLEAN ANZA NARROWS PARK – RIVER GATEWAY AREA PRELIMINARY CONCEPT



EXISTING SITE CONDITIONS

MARTHA MCLEAN ANZA NARROWS PARK



EXISTING SITE CONDITIONS

MARTHA MCLEAN ANZA NARROWS PARK



EXISTING SITE CONDITIONS

MARTHA MCLEAN ANZA NARROWS PARK



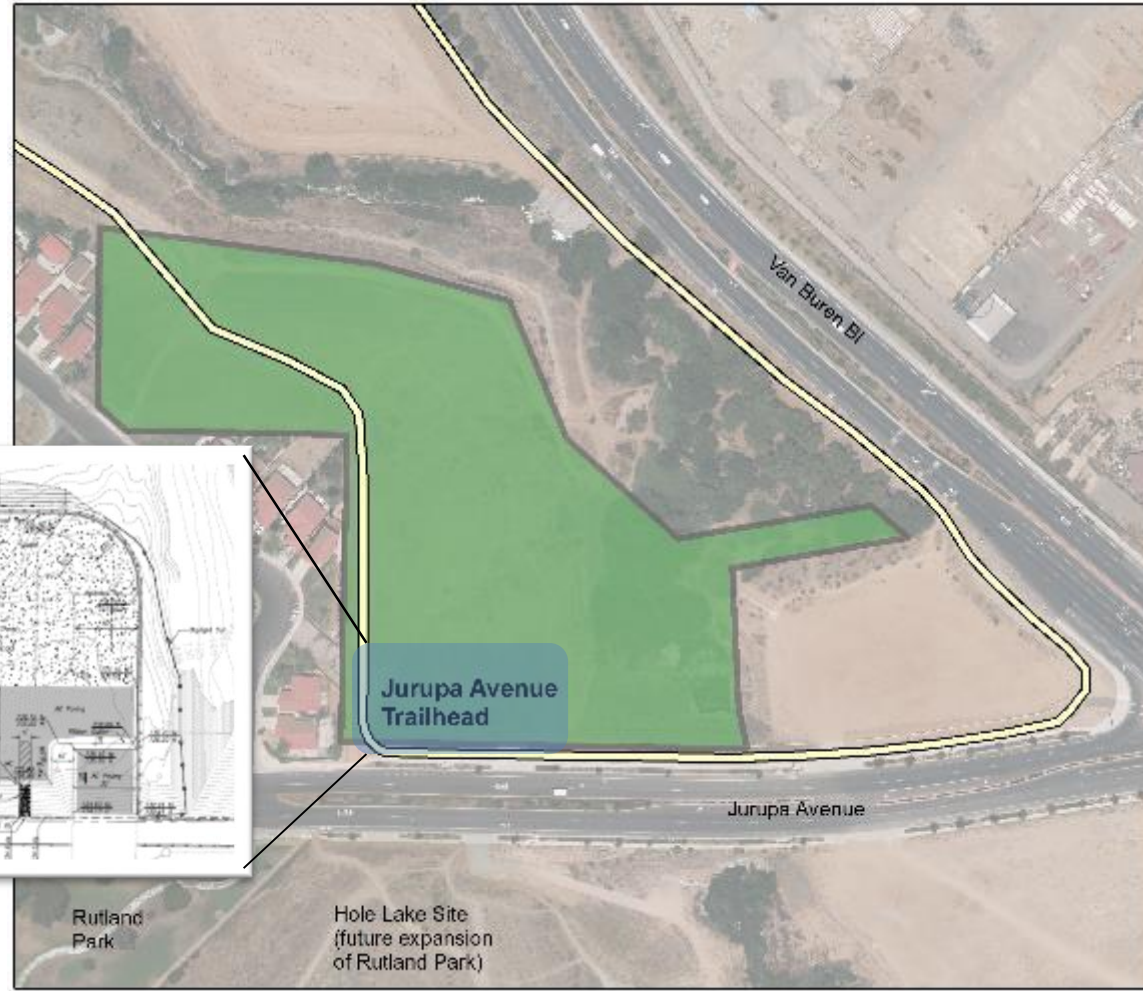
Playground had to be removed and has not yet been replaced.

Restroom building needs to be updated and placed in a more visible location for safety.

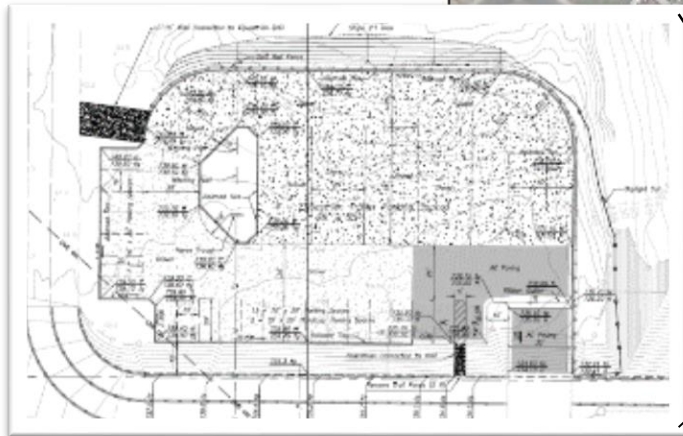


DRAFT IMPROVEMENT IDEAS

JURUPA AVENUE TRAILHEAD - MASTER PLAN



1. Drinking water
2. Shady resting areas
3. Parking for cars and trailers
4. Equestrian facilities (water, hitching, etc.)
5. Bike lockers/racks (to encourage active transportation)
6. Bicycle repair station



EXISTING SITE CONDITIONS

JURUPA AVENUE TRAILHEAD



FUTURE GRANT FUNDING OPPORTUNITIES

1. California Coastal Conservancy – Santa Ana River Conservancy
2. Proposition 1 Integrated Regional Water Management grant through Santa Ana Watershed Project Authority – Camp Evans submitted in January 2019 and projects currently being evaluated
3. Proposition 68 (2018 Parks, Environment, and Water Bond)- California State Parks, California Natural Resources Agency, Coastal Conservancy



PROJECT FUNDING

Source	Amount
Grant Request	\$2,358,500
City Match – Regional Park Fee	\$390,000
City Match – In Kind Labor	\$12,000
Total	\$2,760,500

TIMING: The application for funding will be presented to the Coastal Conservancy Board for approval in August 2019.

RECOMMENDATION

That the Park and Recreation Commission receive an update regarding the filing of a grant application for funding from the California State Coastal Conservancy for the River-side Gateway Project Suite, including parkland acquisition, planning, conceptual design and environmental compliance for multiple park projects along the Santa Ana River.