



UPDATE ON THE STATE OF CALIFORNIA PROPOSITION 68 FUNDS

**Parks, Recreation and Community
Services Department**

Park and Recreation Commission

June 17, 2019

PARK DEVELOPMENT AND COMMUNITY REVITALIZATION PROGRAM

1. Park Development and Revitalization Program is funded through California Drought, Water, Parks, Climate, Coastal Protection and Outdoor Access for All Act of 2018.
2. Goal is to create new parks and recreation opportunities in underserved communities.
3. Parks were selected based off eligibility criteria of having 3 acres or less of parkland per 1,000 residents or a median income of \$51,026 within a half mile radius of park site.
4. Three park sites selected were Low Park, Myra Linn Park and Patterson Park.



APPLICATION PROCESS

1. Applications are currently being completed for the three park sites selected.
2. Community outreach meetings completed.
3. Site concept plans completed.

PARTNERSHIPS DEVELOPED

1. Low Park:

- a) Sierra Middle School
- b) Janet Goeske Senior Center
- c) City of Hope Cancer Center
- d) Panera Bread, Vons and Starbucks

2. Myra Linn Park:

- a) Myra Linn Elementary School
- b) Queen of Angels Church
- c) Maxi Foods



PARTNERSHIPS DEVELOPED (CONT.)

3. Patterson Park:

- a) Eastside HEAL Zone Collaborative
- b) Eastside Neighborhood Forum
- c) Longfellow Elementary School
- d) Resident's of Eastside Active Leadership (REAL)

REIMAGINING YOUR PARK

Low Park (Ward 3)

Patterson Park (Ward 2)

Myra Linn Park (Ward 6)

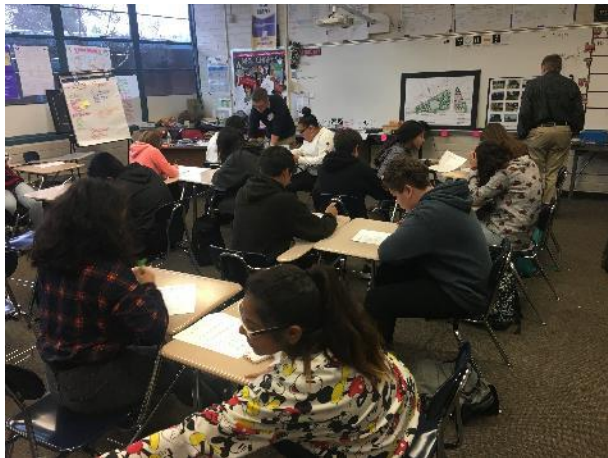
COMMUNITY INPUT

1. (12) User Group Meetings

a) 4 Meetings Per Park

b) R.E.A.L. / Sports Teams / Story Time / Etc.

c) 400 Surveys Received



Sierra Middle School – Associated Student Body



Goeske Center – Take Off Pounds Sensibly (TOPS)



Queen of Angels Church – Sunday Mass

COMMUNITY INPUT

2. (3) Design Charrettes

a) Saturdays & Weeknights

b) Over 175 Participants Total

c) 22 Community Designs



Low Park Design Charrette



Myra Linn Park Design Charrette



Patterson Park Design Charrette

LOW PARK

Top Issues & Concerns –

- Homeless / Crime in the Park
- Fencing or No Fencing
 - Secures Park in Evening
 - Keeps Kids Safe from Traffic
 - Feel Trapped
 - Stop Balls from going into Traffic
- Heavy Traffic Off Magnolia
- Access to Park from Library & Parking Lots
- Protection of Historical Trees & Plaques
- Leave Park as is (Prefer Open Space)



LOW PARK

Top Issues & Concerns –

- Homeless / Crime in the Park
- Fencing or No Fencing
 - Secures Park in Evening
 - Keeps Kids Safe from Traffic
 - Feel Trapped
 - Stop Balls from going into Traffic
- Heavy Traffic Off Magnolia
- Access to Park from Library & Parking Lots
- Protection of Historical Trees & Plaques
- Leave Park as is (Prefer Open Space)

Top Features & Amenities –

1. **Playgrounds** (124 Votes)
2. **Walking / Jogging Loop** (115 Votes)
3. **Fitness Equipment** (102 Votes)
4. Community Garden (91 Votes)
5. Picnic / BBQ Space (82 Votes)
6. **Basketball Court** (58 Votes)
7. Dog Run (56 Votes)
8. Amphitheater (35 Votes)
9. Splash Pad (25 Votes)
10. Butterfly Garden (10 Votes)

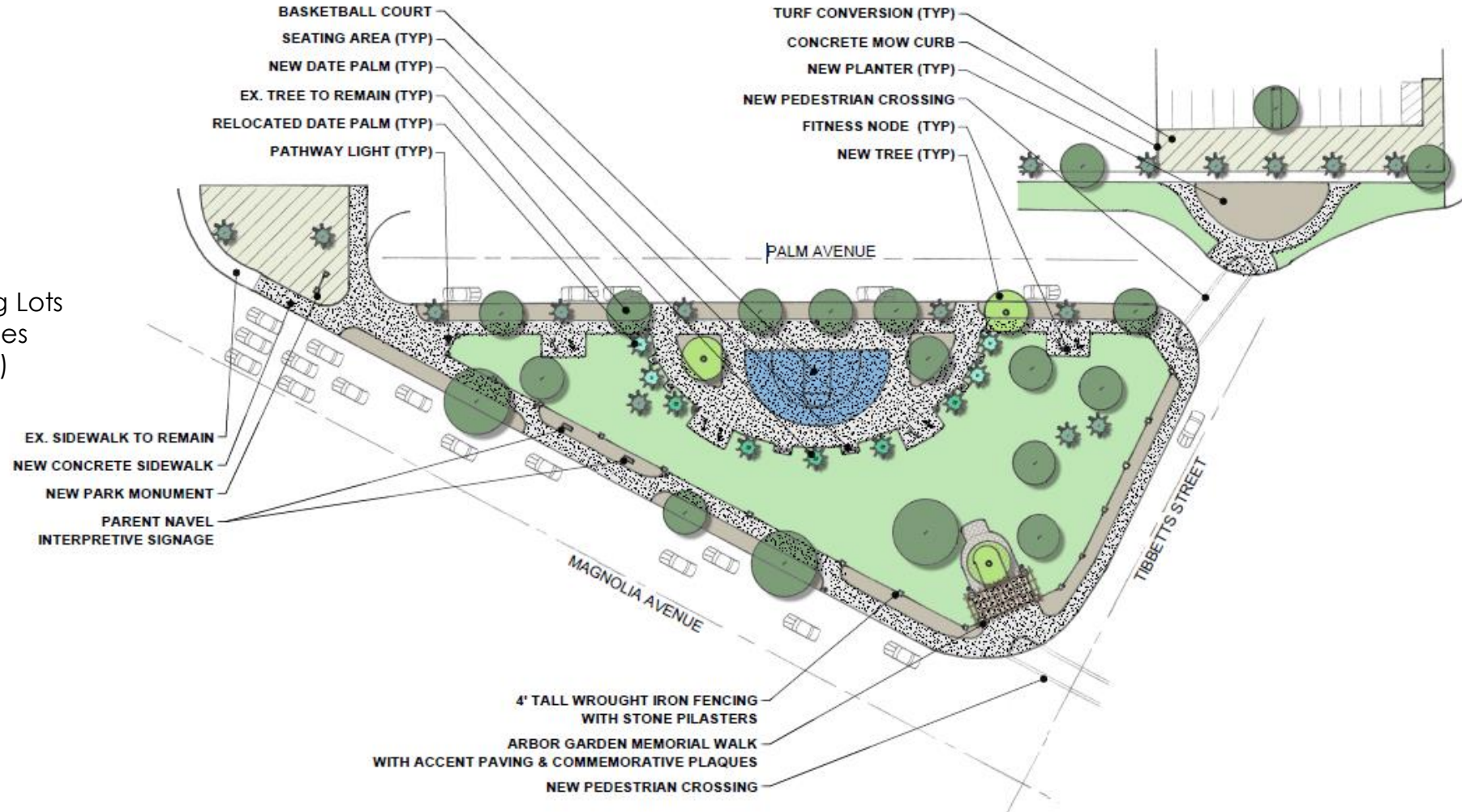


Top Issues & Concerns –

- Homeless / Crime in the Park
- Fencing or No Fencing
 - Secures Park in Evening
 - Keeps Kids Safe from Traffic
 - Feel Trapped
 - Stop Balls from going into Traffic
- Heavy Traffic Off Magnolia
- Access to Park from Library & Parking Lots
- Protection of Historical Trees & Plaques
- Leave Park as is (Prefer Open Space)

Top Features & Amenities –

1. Playgrounds (124 Votes)
2. Walking / Jogging Loop (115 Votes)
3. Fitness Equipment (102 Votes)
4. Community Garden (91 Votes)
5. Picnic / BBQ Space (82 Votes)
6. Basketball Court (58 Votes)
7. Dog Run (56 Votes)
8. Amphitheater (35 Votes)
9. Splash Pad (25 Votes)
10. Butterfly Garden (10 Votes)

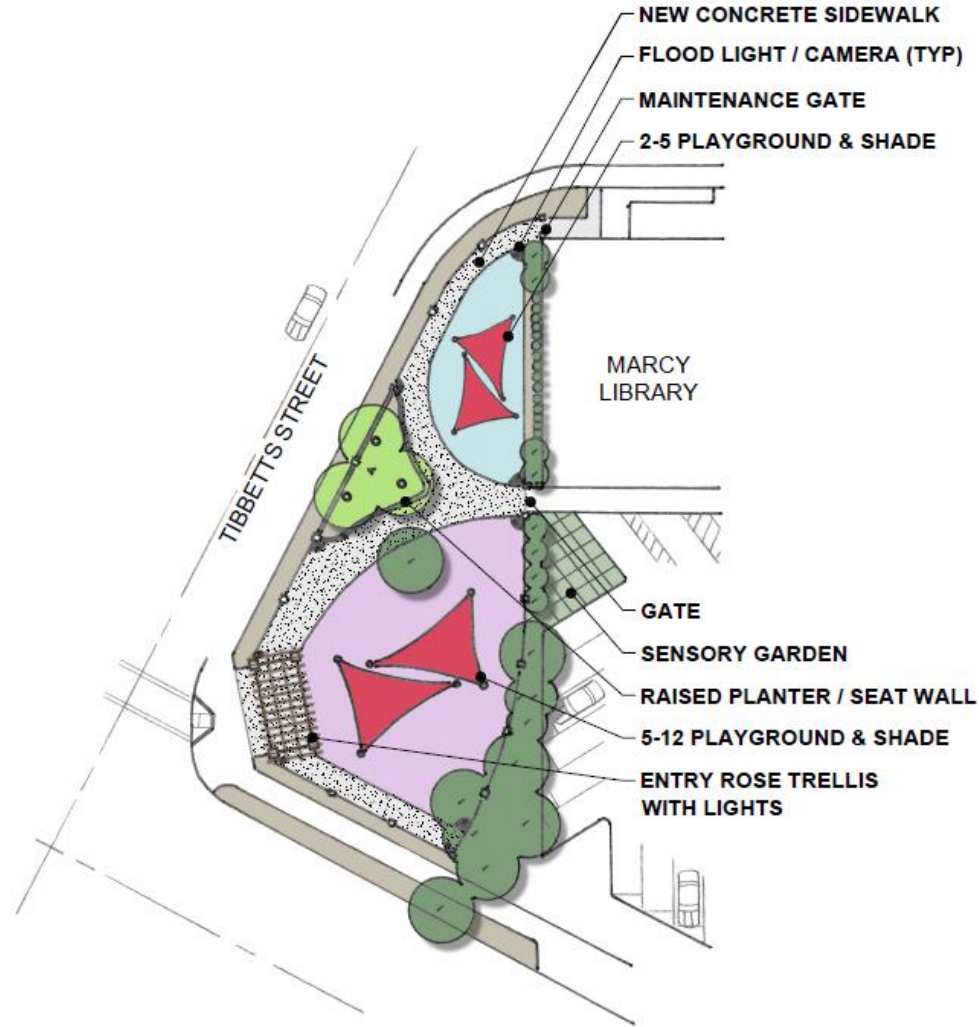


Top Issues & Concerns –

- Homeless / Crime in the Park
- Fencing or No Fencing
 - Secures Park in Evening
 - Keeps Kids Safe from Traffic
 - Feel Trapped
 - Stop Balls from going into Traffic
- Heavy Traffic Off Magnolia
- Access to Park from Library & Parking Lots
- Protection of Historical Trees & Plaques
- Leave Park as is (Prefer Open Space)

Top Features & Amenities –

1. Playgrounds (124 Votes)
2. Walking / Jogging Loop (115 Votes)
3. Fitness Equipment (102 Votes)
4. Community Garden (91 Votes)
5. Picnic / BBQ Space (82 Votes)
6. Basketball Court (58 Votes)
7. Dog Run (56 Votes)
8. Amphitheater (35 Votes)
9. Splash Pad (25 Votes)
10. Butterfly Garden (10 Votes)

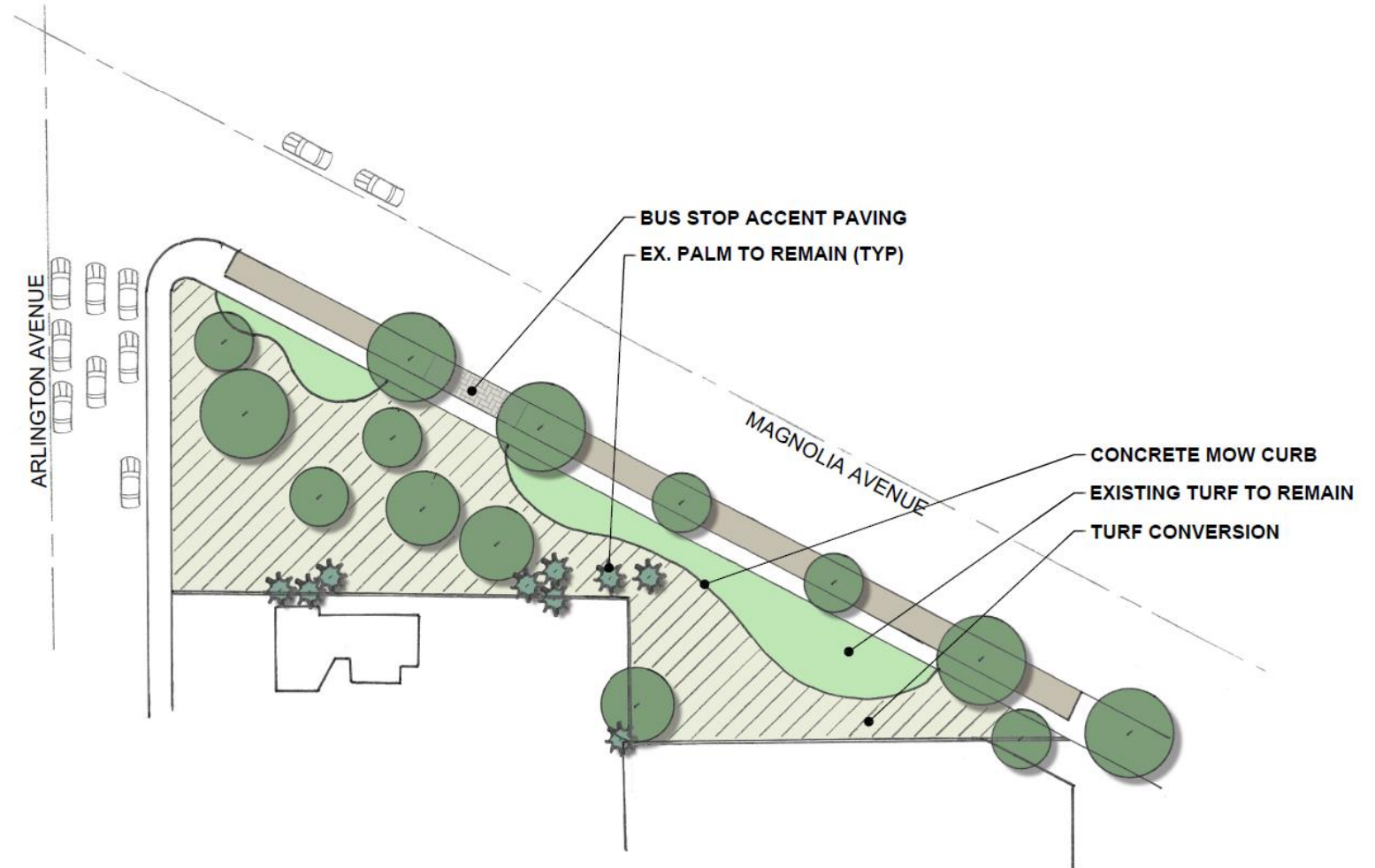


Top Issues & Concerns –

- Homeless / Crime in the Park
- Fencing or No Fencing
 - Secures Park in Evening
 - Keeps Kids Safe from Traffic
 - Feel Trapped
 - Stop Balls from going into Traffic
- Heavy Traffic Off Magnolia
- Access to Park from Library & Parking Lots
- Protection of Historical Trees & Plaques
- Leave Park as is (Prefer Open Space)

Top Features & Amenities –

1. Playgrounds (124 Votes)
2. Walking / Jogging Loop (115 Votes)
3. Fitness Equipment (102 Votes)
4. Community Garden (91 Votes)
5. Picnic / BBQ Space (82 Votes)
6. Basketball Court (58 Votes)
7. Dog Run (56 Votes)
8. Amphitheater (35 Votes)
9. Splash Pad (25 Votes)
10. Butterfly Garden (10 Votes)

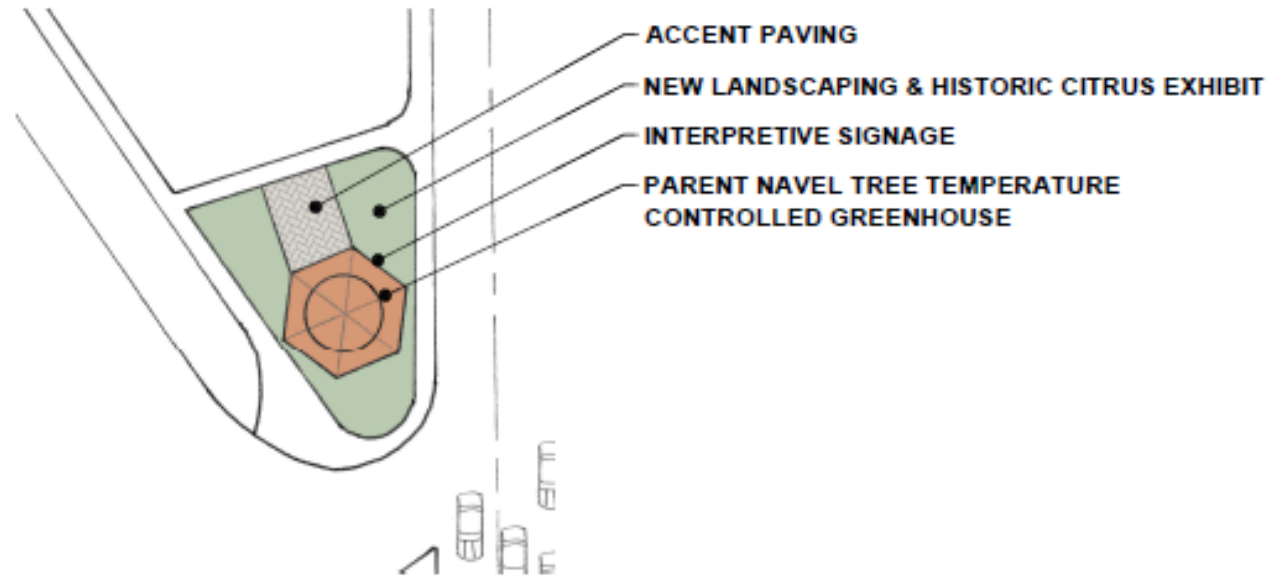


Top Issues & Concerns –

- Homeless / Crime in the Park
- Fencing or No Fencing
 - Secures Park in Evening
 - Keeps Kids Safe from Traffic
 - Feel Trapped
 - Stop Balls from going into Traffic
- Heavy Traffic Off Magnolia
- Access to Park from Library & Parking Lots
- Protection of Historical Trees & Plaques
- Leave Park as is (Prefer Open Space)

Top Features & Amenities –

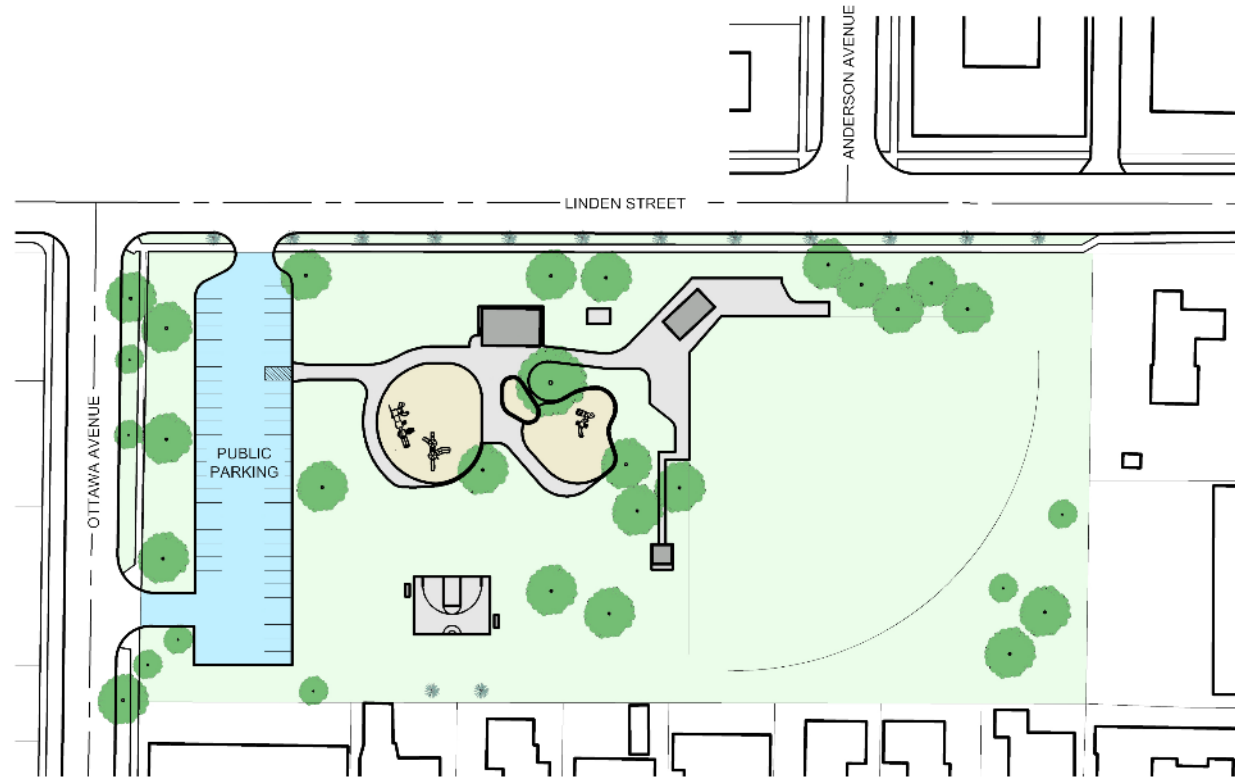
1. Playgrounds (124 Votes)
2. Walking / Jogging Loop (115 Votes)
3. Fitness Equipment (102 Votes)
4. Community Garden (91 Votes)
5. Picnic / BBQ Space (82 Votes)
6. Basketball Court (58 Votes)
7. Dog Run (56 Votes)
8. Amphitheater (35 Votes)
9. Splash Pad (25 Votes)
10. Butterfly Garden (10 Votes)



PATTERSON PARK

Top Issues & Concerns –

- Lighting
 - Park Too Dark at Night
- Fencing
- Police Presence & Vigilance
- Programming / Activities
- Minimize Hiding Places
- Community Building
- Drinking Water (Filtered)
- Tree Trimming
- Loitering Groups in Park



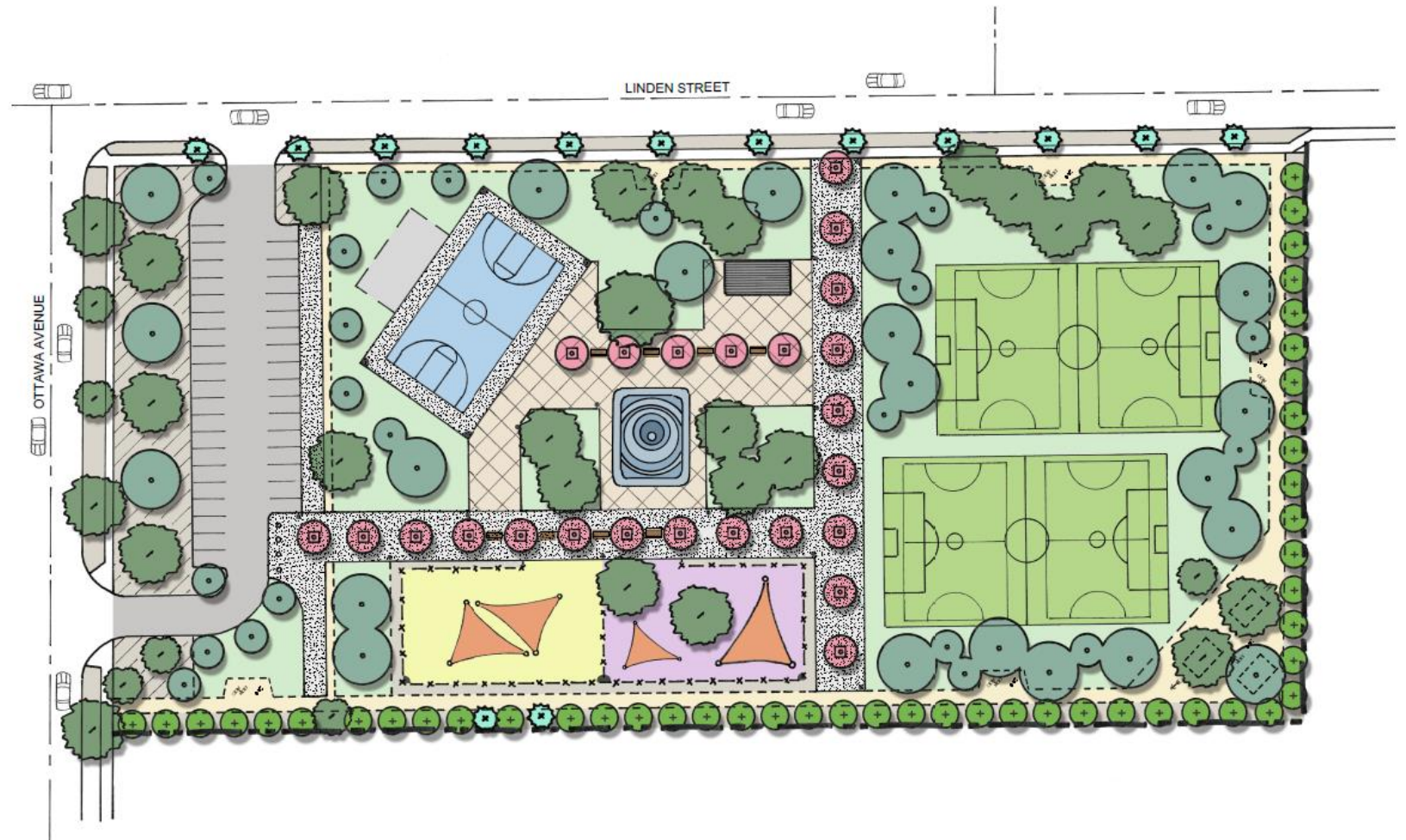
PATTERSON PARK

Top Issues & Concerns –

- Lighting
 - Park Too Dark at Night
- Fencing
- Police Presence & Vigilance
- Programming / Activities
- Minimize Hiding Places
- Community Building
- Drinking Water (Filtered)
- Tree Trimming
- Loitering Groups in Park

Top Features & Amenities –

1. Basketball Court (121 Votes)
2. Fitness Equipment (104 Votes)
3. Playgrounds (92 Votes)
4. Shaded Seating (91 Votes)
5. Picnic / BBQ Space (90 Votes)
6. Soccer Field (85 Votes)
7. Community Garden (83 Votes)
8. Walking / Jogging Loop (82 Votes)
9. Skate Park (78 Votes)
10. Splash Pad (63 Votes)



Top Issues & Concerns –

- Lighting
 - Park Too Dark at Night
- Fencing
- Police Presence & Vigilance
- Programming / Activities
- Minimize Hiding Places
- Community Building
- Drinking Water (Filtered)
- Tree Trimming
- Loitering Groups in Park

Top Features & Amenities –

1. Basketball Court (121 Votes)
2. Fitness Equipment (104 Votes)
3. Playgrounds (92 Votes)
4. Shaded Seating (91 Votes)
5. Picnic / BBQ Space (90 Votes)
6. Soccer Field (85 Votes)
7. Community Garden (83 Votes)
8. Walking / Jogging Loop (82 Votes)
9. Skate Park (78 Votes)
10. Splash Pad (63 Votes)

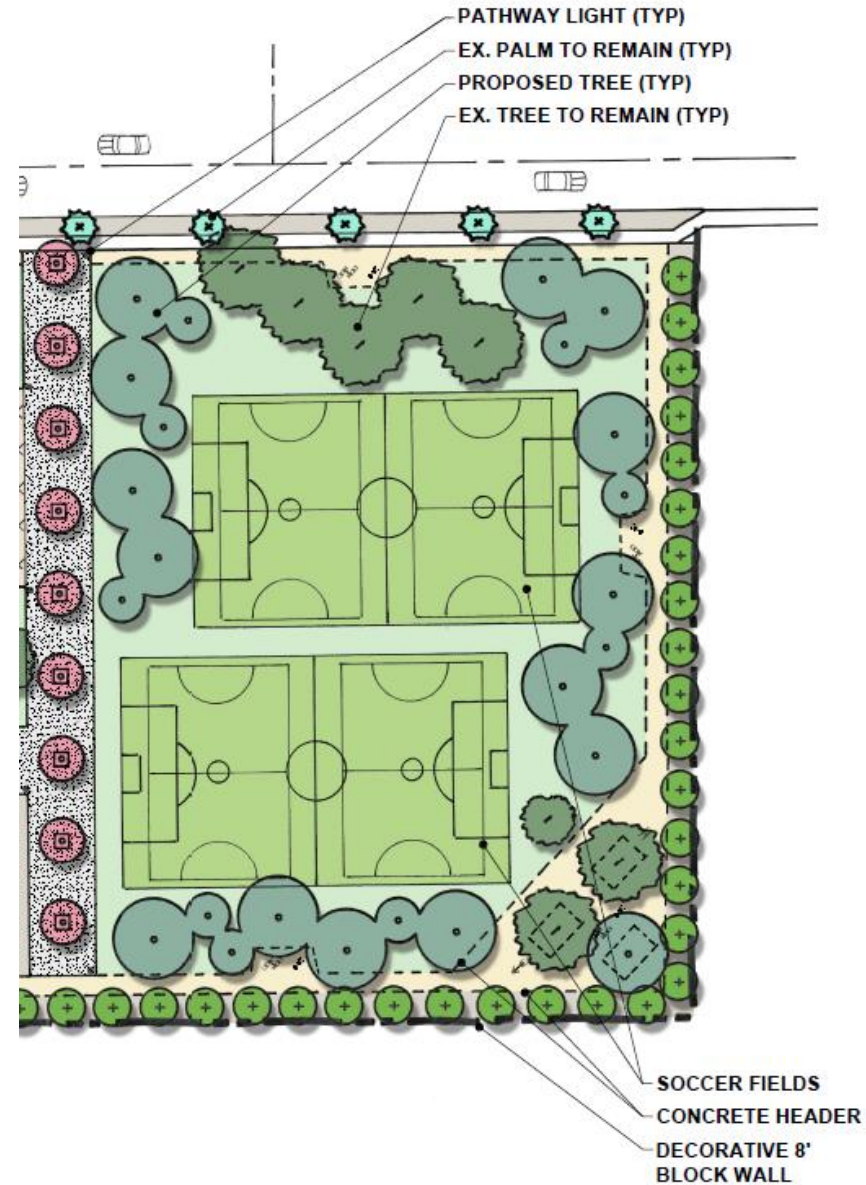


Top Issues & Concerns –

- Lighting
 - Park Too Dark at Night
- Fencing
- Police Presence & Vigilance
- Programming / Activities
- Minimize Hiding Places
- Community Building
- Drinking Water (Filtered)
- Tree Trimming
- Loitering Groups in Park

Top Features & Amenities –

1. Basketball Court (121 Votes)
2. Fitness Equipment (104 Votes)
3. Playgrounds (92 Votes)
4. Shaded Seating (91 Votes)
5. Picnic / BBQ Space (90 Votes)
6. Soccer Field (85 Votes)
7. Community Garden (83 Votes)
8. Walking / Jogging Loop (82 Votes)
9. Skate Park (78 Votes)
10. Splash Pad (63 Votes)



MYRA LINN PARK

Top Issues & Concerns –

- Lighting
 - Park Too Dark at Night
- Homeless / Crime in Park
- Existing Restrooms are Insufficient
- Parking
 - Existing Parking Lot is Insufficient
 - Limited Parking Off Mobley / Cook
- Open Space / Turf Field
 - Sloping
 - Too Small for Regulation Fields
- No ADA Access to Picnic Pavilions



MYRA LINN PARK

Top Issues & Concerns –

- Lighting
 - Park Too Dark at Night
- Homeless / Crime in Park
- Existing Restrooms are Insufficient
- Parking
 - Existing Parking Lot is Insufficient
 - Limited Parking Off Mobley / Cook
- Open Space / Turf Field
 - Sloping
 - Too Small for Regulation Fields
- No ADA Access to Picnic Pavilions

Top Features & Amenities –

1. Soccer Field (177 Votes)
2. Playgrounds (172 Votes)
3. Fitness Equipment (164 Votes)
4. Splash Pad (156 Votes)
5. Basketball Court (145 Votes)
5. Walking / Jogging Loop (145 Votes)
6. Picnic / BBQ Space (135 Votes)
7. Community Center (108 Votes)
8. Restroom (103 Votes)
8. Additional Parking (103 Votes)
9. Amphitheater (84 Votes)
9. Community Garden (84 Votes)
10. Dog Run (33 Votes)

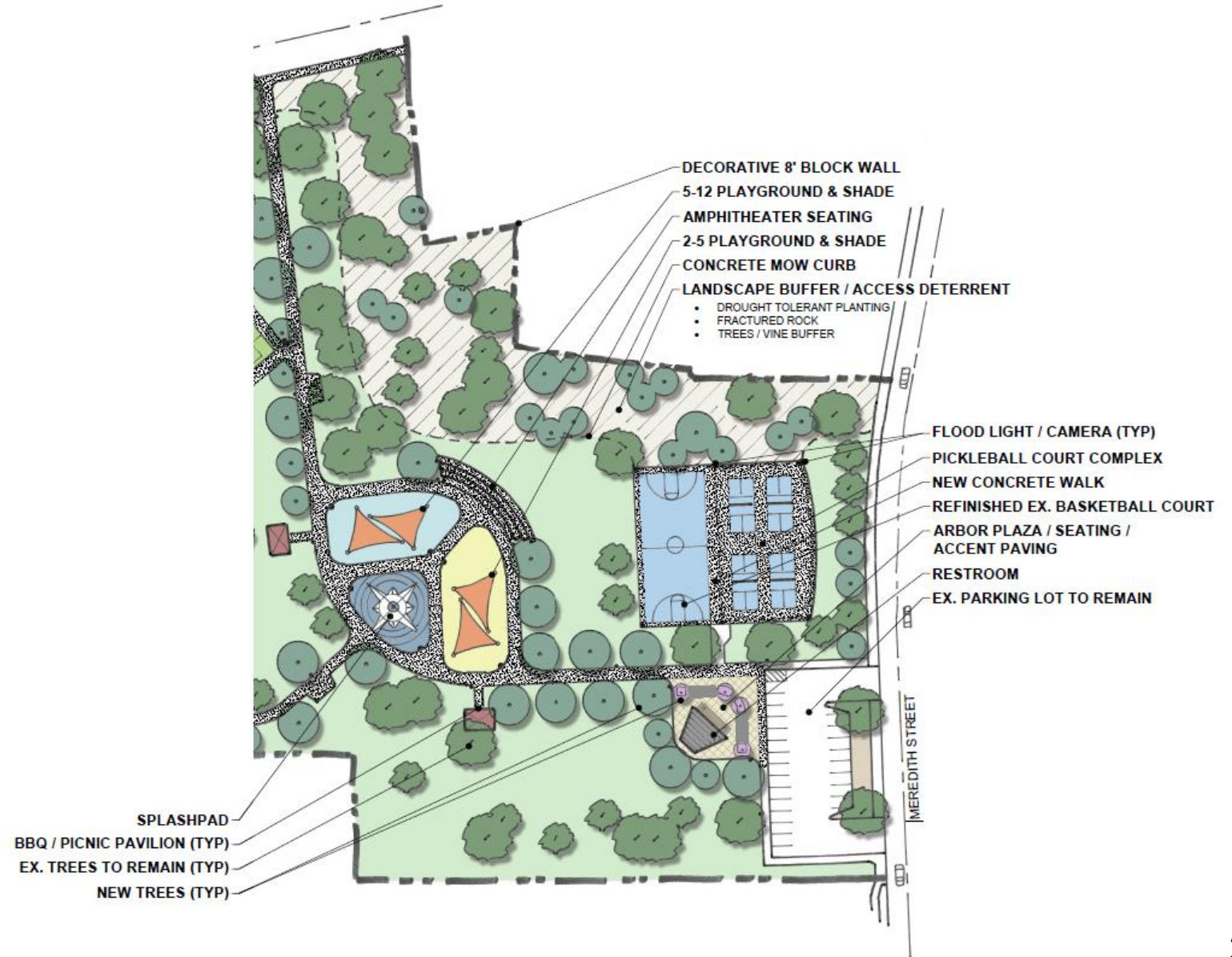


Top Issues & Concerns –

- Lighting
 - Park Too Dark at Night
- Homeless / Crime in Park
- Existing Restrooms are Insufficient
- Parking
 - Existing Parking Lot is Insufficient
 - Limited Parking Off Mobley / Cook
- Open Space / Turf Field
 - Sloping
 - Too Small for Regulation Fields
- No ADA Access to Picnic Pavilions

Top Features & Amenities –

1. Soccer Field (177 Votes)
2. Playgrounds (172 Votes)
3. Fitness Equipment (164 Votes)
4. Splash Pad (156 Votes)
5. Basketball Court (145 Votes)
5. Walking / Jogging Loop (145 Votes)
6. Picnic / BBQ Space (135 Votes)
7. Community Center (108 Votes)
8. Restroom (103 Votes)
8. Additional Parking (103 Votes)
9. Amphitheater (84 Votes)
9. Community Garden (84 Votes)
10. Dog Run (33 Votes)



Top Issues & Concerns –

- Lighting
 - Park Too Dark at Night
- Homeless / Crime in Park
- Existing Restrooms are Insufficient
- Parking
 - Existing Parking Lot is Insufficient
 - Limited Parking Off Mobley / Cook
- Open Space / Turf Field
 - Sloping
 - Too Small for Regulation Fields
- No ADA Access to Picnic Pavilions

Top Features & Amenities –

1. Soccer Field (177 Votes)
2. Playgrounds (172 Votes)
3. Fitness Equipment (164 Votes)
4. Splash Pad (156 Votes)
5. Basketball Court (145 Votes)
5. Walking / Jogging Loop (145 Votes)
6. Picnic / BBQ Space (135 Votes)
7. Community Center (108 Votes)
8. Restroom (103 Votes)
8. Additional Parking (103 Votes)
9. Amphitheater (84 Votes)
9. Community Garden (84 Votes)
10. Dog Run (33 Votes)



PROP 68 GRANT APPLICATIONS

LOW PARK – \$5,000,000

PATTERSON PARK – \$6,500,000

MYRA LINN PARK – \$8,000,000

QUESTIONS?

RECOMMENDATION

That the Park and Recreation Commission receive an update and provide feedback on Proposition 68 grant funds.